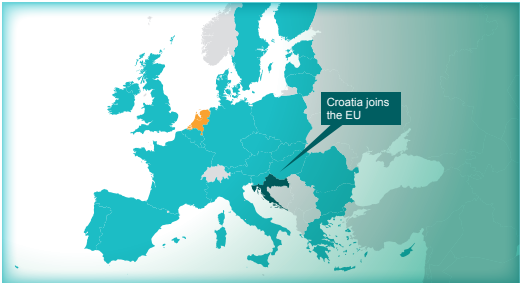
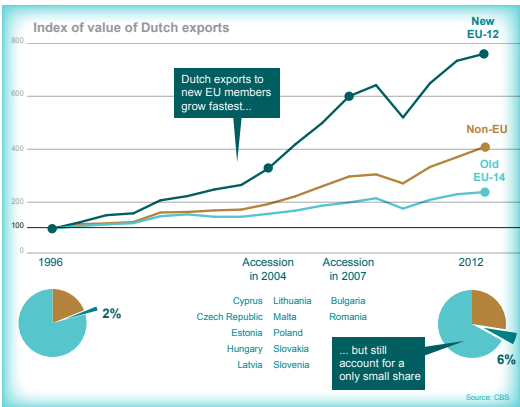


Dutch exports of goods strongly EU oriented

Croatia joined the EU on 1 July. How have Dutch exports to other new EU countries developed since their accession? And to what extent are Dutch exports overall oriented to the EU?

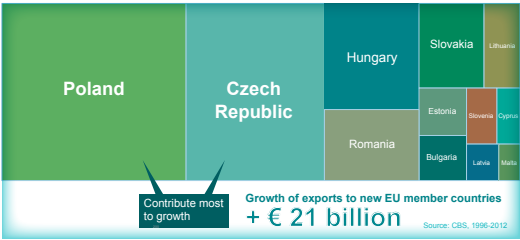


Exports to more recent EU members have grown much faster than those to other countries ...



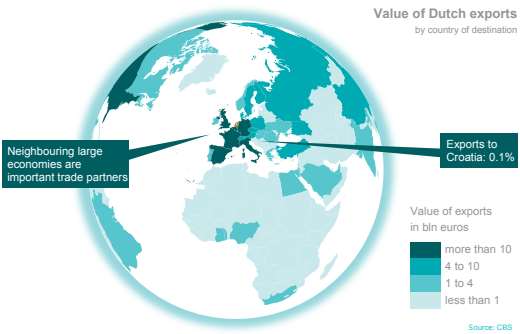
... but these new members still account for only a small part of total exports....

...and over half of the growth of exports to the 12 new member countries is accounted for by ex-ports to Poland and the Czech Republic.



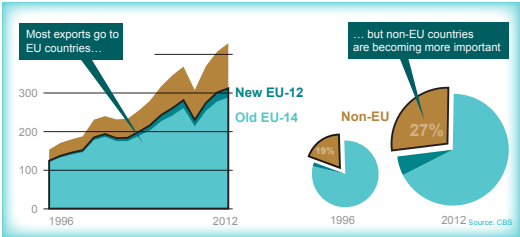
The relatively low value of Dutch exports to new member countries is related to distance and the size of the economies concerned, both very important determinants in international trade of goods.

The Netherlands trades intensively with large neighbouring economies, for example, while only 0.1% of exports go to Croatia...

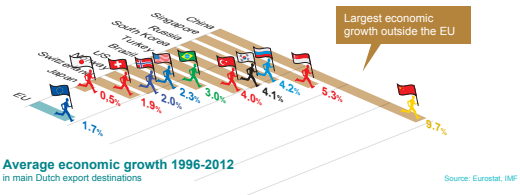


... and two-thirds of Dutch exports go to the 14 countries that have been EU members the longest, many of which are located close to the Netherlands and have large economies.

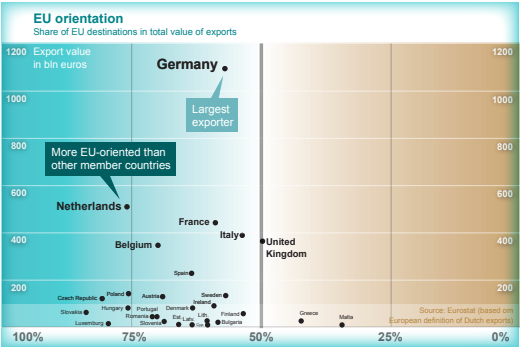
However, countries outside the EU are becoming increasingly important for the Netherlands ...



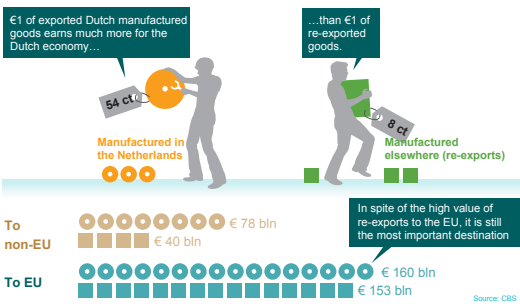
...which is consistent with the higher economic growth rates outside the EU.



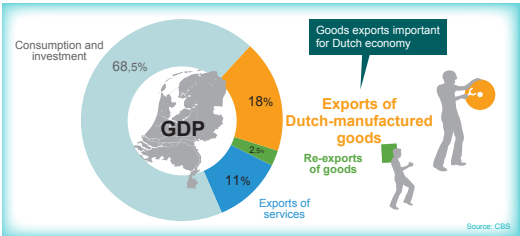
In spite of this, the Netherlands - the second largest exporter in the EU - is still more EU-oriented than most other member countries...



...and that is because a considerable part of Dutch exports to the EU consist of re-exports. Other countries re-export much less to the EU than the Netherlands.



Re-exports generate relatively little for the Dutch economy, but if they are not taken into account, the Netherlands still exports more to EU countries than other countries. As a result, exports to the EU earn more for the Dutch economy than exports to non-EU countries.



Total Dutch exports of goods account for 20.5% of GDP. Together with exports of services this rises to 31.5%.