



Statistics Netherlands

# Press release

PB09-041  
20 May 2009  
15:00 hrs

## *Unemployment rises quickly*

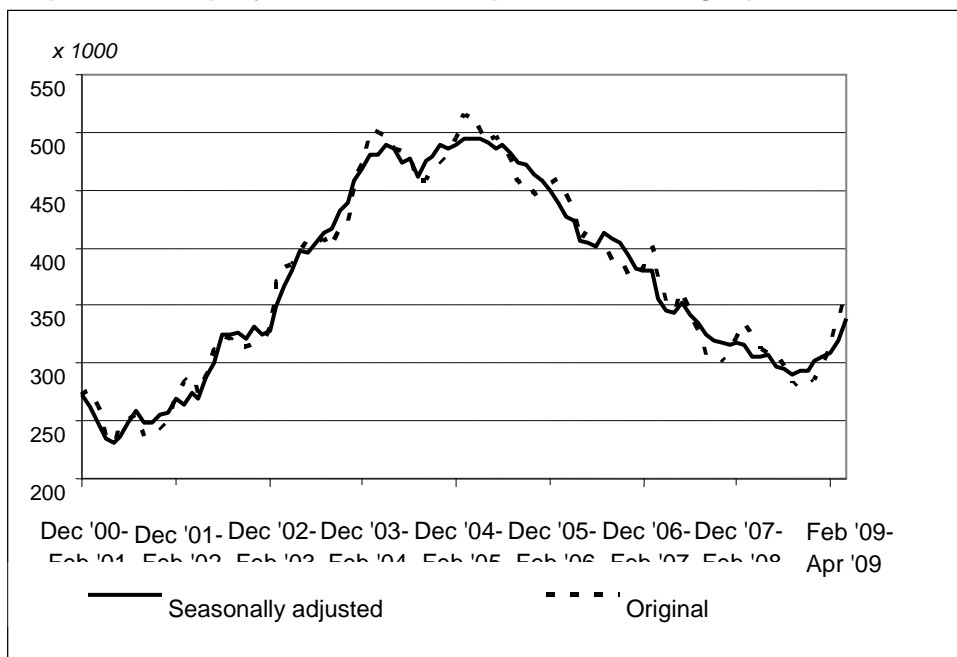
- Substantially more unemployed
- Now also more women unemployed as well

In the period February-April 2009 unemployment averaged 360 thousand. This equals 4.6 percent of the labour force. This was still 4.2 percent the year before as the latest figures of Statistics Netherlands show.

Seasonally adjusted unemployment in the period February-April 2009 stood at 338 thousand, 18 thousand people more than in the preceding three month period. The pace in which unemployment increased has accelerated substantially.

Unemployment is now up by 34 thousand on a year ago. Unemployment among men increased by 26 thousand in one year and among women by 8 thousand. It is for the first time in over three years that more women are unemployed than one year previously.

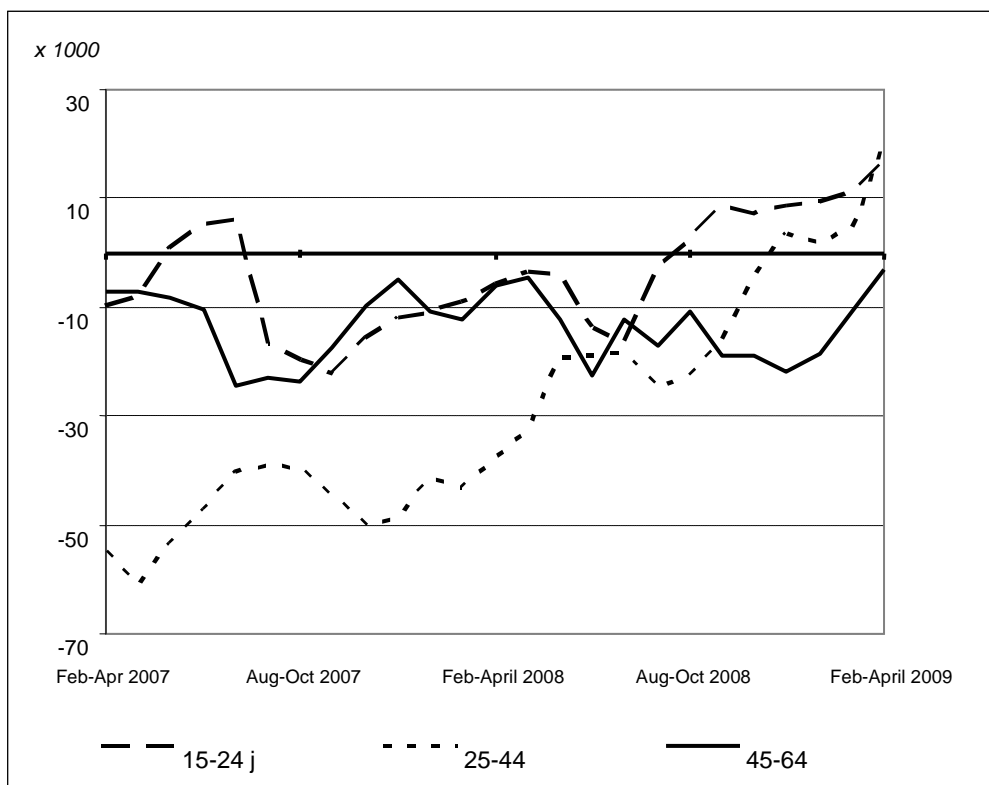
**Graph 1: Unemployed labour force (3 month averages)**



**Source: Statistics Netherlands**

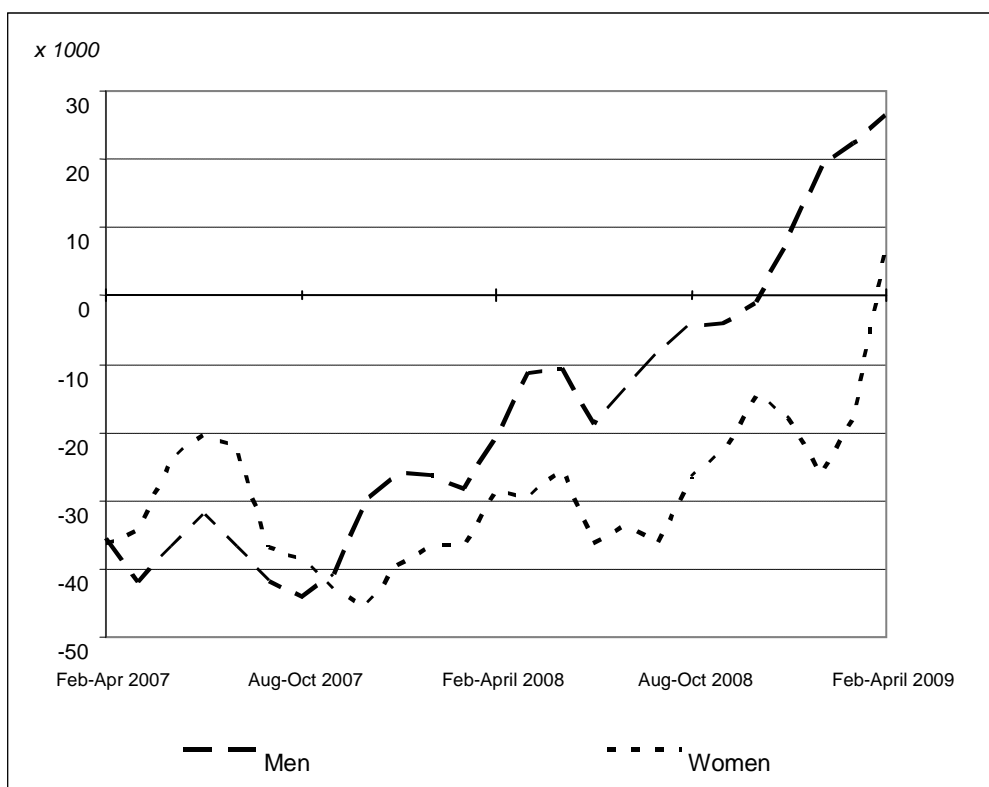
www.cbs.nl

**Graph 2: Unemployed labour force by age: year-on-year changes (three month averages)**



**Source: Statistics Netherlands**

**Graph 3: Unemployed labour force by sex: year-on-year changes (three month averages)**



**Source: Statistics Netherlands**