



# Press release

PB03-224  
17 December 2003  
9:30 AM

## ***Unemployment rate increasing faster***

In the period September – November 2003 the average unemployment figure in the Netherlands was 424 thousand. This is 109 thousand more than in the same period last year.

During the last three months some 5.7 percent of the Dutch labour force was unemployed. This was 4.2 percent during the same period in 2002. After a relatively stable summer period, the unemployment rate is increasing at a faster pace again, according to the latest figures by Statistics Netherlands.

## ***Seasonally corrected unemployment figure up***

Unemployment tends to be lower in the period September – November due to seasonal influences. The seasonally corrected figures show that the unemployed labour force totals 432 thousand. This is an increase of 18 thousand on last month.

## ***Employment continues to fall***

In the period September – November there were 7 064 thousand people employed in a job of twelve hours a week or more. This is a decrease of 100 thousand people in the actively employed labour force compared to the same period in 2002.

## ***Economy puts the brake on labour supply***

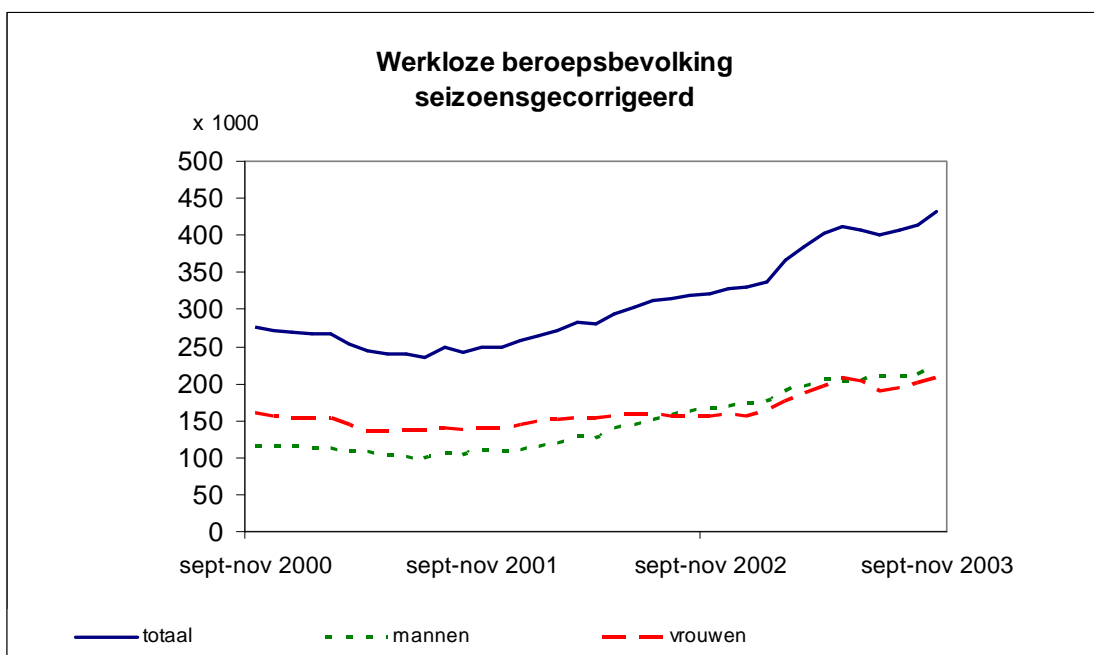
The number of people employed or willing to work constitutes the sum of the employed and unemployed labour force. The labour supply has increased by an average of 120 thousand a year over the last few years. This is much more than the increase in the number of 15-64 year olds. In 2003 the growth rate in the labour supply continued to fall. In the third quarter, the year-on-year growth rate was 20 thousand, which is well below the growth rate of the population. There seem to be fewer people available for the job market due to the stagnating economy.

**Table 1. Unemployed labour force**

	Dec.- Feb.	Jan.- Mar.	Feb.- Apr.	Mar.- May	Apr.- June	May- July	June- Aug.	July- Sep.	Aug.- Oct.	Sep.- Nov.	Oct.- Dec.	Nov.- Jan.
x 1 000												
2001	273	277	262	236	232	245	249	255	235	242	240	248
2002	270	282	290	272	287	309	325	322	313	315	318	321
2003	343	377	392	395	403	414	414	413	407	424		
Year-on-year changes												
2001	13	8	-13	-38	-37	-36	-29	-21	-33	-27	-22	-11
2002	-3	5	28	36	55	64	76	67	78	73	78	73
2003	73	95	102	123	116	105	89	91	94	109		
Seasonally corrected figures												
2001	268	267	254	245	239	239	236	248	242	250	250	257
2002	265	271	282	280	295	303	312	315	320	322	328	330
2003	338	367	385	403	411	408	401	406	414	432		
Average monthly change during the last six months												
2001	1	0	-4	-5	-6	-5	-5	-3	-2	1	2	3
2002	5	4	7	5	8	8	8	7	6	7	6	5
2003	4	9	11	14	14	13	11	7	5	5		

Source: CBS

**Unemployed labour force, seasonally corrected figures**



Source: CBS

**Table 2. Unemployed labour force by sex and age**

	Men	Women	15-24	25-44	45-64	Total
	x 1 000					
2001	108	142	67	121	63	251
2002	147	155	78	149	76	302
Sep. - Nov. 2002	157	158	78	156	80	315
Sep. - Nov. 2003	215	209	86	221	117	424
	Unemployment rate <sup>1)</sup>					
2001	2.5	4.8	7.3	2.9	2.7	3.4
2002	3.4	5.0	8.5	3.6	3.1	4.1
Sep. - Nov. 2002	3.6	5.1	8.7	3.8	3.2	4.2
Sep. - Nov. 2003	4.9	6.7	9.8	5.4	4.6	5.7

1) Unemployed as a percentage of the labour force, not seasonally corrected

Source: CBS

**Table 3. Actively employed labour force**

	Dec.- Feb.	Jan.- Mar.	Feb.- Apr.	Mar.- May	Apr.- June	May- July	June- Aug.	July- Sep.	Aug.- Oct.	Sep.- Nov.	Oct.- Dec.	Nov.- Jan.
	x 1 000											
2001	6 934	6 958	6 984	7 017	7 045	7 104	7 165	7 154	7 121	7 090	7 101	7 082
2002	7 053	7 062	7 067	7 094	7 132	7 174	7 212	7 212	7 194	7 164	7 159	7 136
2003	7 087	7 064	7 061	7 069	7 098	7 145	7 193	7 142	7 120	7 064		
	Year-on-year changes											
2001	122	166	151	171	145	140	126	144	139	130	128	144
2002	118	105	83	77	87	70	47	58	72	75	58	54
2003	34	2	-6	-25	-34	-29	-19	-70	-74	-100		
	Seasonally corrected figures											
2001	6 990	7 013	7 039	7 056	7 058	7 062	7 079	7 086	7 080	7 084	7 097	7 110
2002	7 108	7 117	7 122	7 134	7 145	7 131	7 126	7 144	7 153	7 159	7 155	7 164
2003	7 143	7 120	7 115	7 109	7 111	7 103	7 107	7 074	7 079	7 059		
	Average monthly change during the last six months											
2001	6	12	16	17	15	16	15	12	7	5	7	8
2002	5	5	7	8	8	4	3	5	5	4	2	6
2003	3	-4	-6	-8	-7	-10	-6	-8	-6	-8		

**Source: CBS**