



# Press release

PB03-206  
19 November 2003  
9:30 AM

## ***Unemployment increasing steadily***

In the period August – October 2003 the number of unemployed people in the Netherlands averaged 407 thousand. This is 94 thousand more than in the same period last year.

During the last three months an average of 5.4 percent of the Dutch labour force was unemployed. A year earlier this was 4.2 percent. After a sharp increase earlier this year, the number of unemployed is now increasing more slowly, according to the latest figures by Statistics Netherlands.

### ***Increasing at a lower rate***

Dutch unemployment tends to be lower in the period August – October due to seasonal influences. The seasonally corrected figures show that the unemployed labour force is 414 thousand. The average monthly increase over the last six months is now 5 thousand. The rate of increase has levelled off in recent months.

### ***Constant increase in number of older unemployed people***

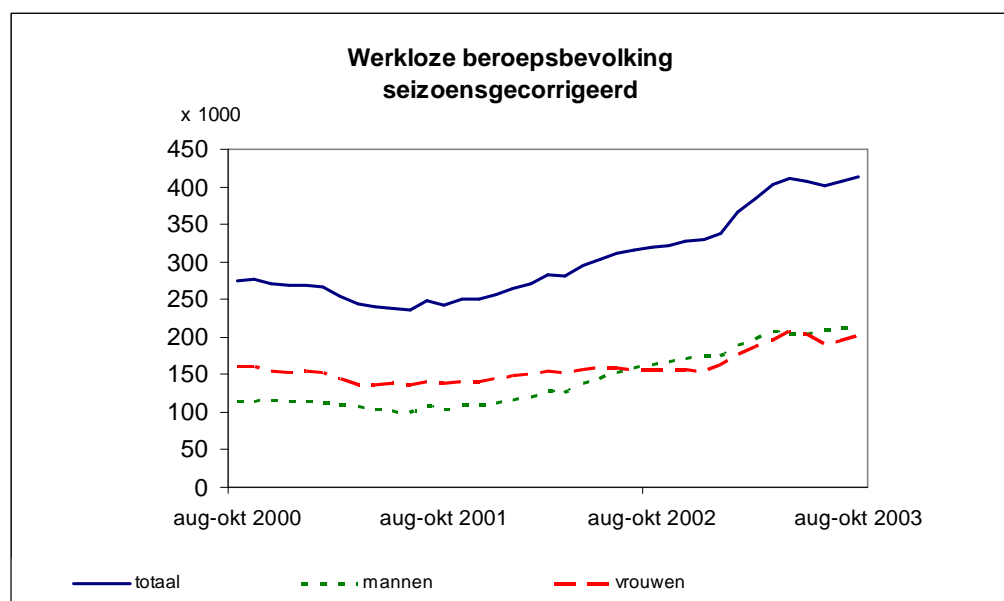
Unemployment among 45-64-year-olds in the labour force is 4.2 percent, which is lower than the unemployment rate of people aged under 45. Currently 106 thousand people in the highest age category are unemployed, versus 77 thousand last year and 57 thousand two years ago. This group follows the trends in total unemployment in which it has a constant share of about 25 percent.

### ***Employment down by 1 percent***

In the period August – October about 7 120 thousand people worked in a job of twelve hours a week or more. The active labour force is down by 74 thousand on last year, this is a decrease of about 1 percent.

**Table 1. Unemployed labour force**

	Dec- Feb	Jan- Mar	Feb- April	Mar- May	April- June	May- July	June- Aug	July- Sep	Aug- Oct	Sep- Nov	Oct- Dec	Nov- Jan
x 1 000												
2001	273	277	262	236	232	245	249	255	235	242	240	248
2002	270	282	290	272	287	309	325	322	313	315	318	321
2003	343	377	392	395	403	414	414	413	407			
Year-on-year changes												
2001	13	8	-13	-38	-37	-36	-29	-21	-33	-27	-22	-11
2002	-3	5	28	36	55	64	76	67	78	73	78	73
2003	73	95	102	123	116	105	89	91	94			
Seasonally corrected												
2001	268	267	254	245	239	239	236	248	242	250	250	257
2002	265	271	282	280	295	303	312	315	320	322	328	330
2003	338	367	385	403	411	408	401	406	414			
Average monthly changes over the last six months												
2001	1	0	-4	-5	-6	-5	-5	-3	-2	1	2	3
2002	5	4	7	5	8	8	8	7	6	7	6	5
2003	4	9	11	14	14	13	11	7	5			

**Source: CBS****Unemployed labour force, seasonally corrected figures****Source: CBS**

**Table 2. Unemployed labour force by sex and age**

	Men	Women	15-24	25-44	45-64	Total
x 1 000						
2001	108	142	67	121	63	251
2002	147	155	78	149	76	302
Aug. - Oct. 2002	155	158	82	154	77	313
Aug. - Oct. 2003	204	203	84	217	106	407
Unemployment rate <sup>1)</sup>						
2001	2,5	4,8	7,3	2,9	2,7	3,4
2002	3,4	5,0	8,5	3,6	3,1	4,1
Aug. - Oct. 2002	3,5	5,1	8,7	3,8	3,1	4,2
Aug. - Oct. 2003	4,7	6,4	9,3	5,3	4,2	5,4

1) Unemployed as a percentage of the labour force, not the seasonally corrected figures

**Source: CBS**

**Table 3 Employed labour force**

	Dec- Feb	Jan- Mar	Feb- April	Mar- May	April- June	May- July	June- Aug	July- Sep	Aug- Oct	Sep- Nov	Oct- Dec	Nov- Jan
x 1 000												
2001	6 934	6 958	6 984	7 017	7 045	7 104	7 165	7 154	7 121	7 090	7 101	7 082
2002	7 053	7 062	7 067	7 094	7 132	7 174	7 212	7 212	7 194	7 164	7 159	7 136
2003	7 087	7 064	7 061	7 069	7 098	7 145	7 193	7 142	7 120			
Year-on-year changes												
2001	122	166	151	171	145	140	126	144	139	130	128	144
2002	118	105	83	77	87	70	47	58	72	75	58	54
2003	34	2	-6	-25	-34	-29	-19	-70	-74			
Seasonally corrected figures												
2001	6 990	7 013	7 039	7 056	7 058	7 062	7 079	7 086	7 080	7 084	7 097	7 110
2002	7 108	7 117	7 122	7 134	7 145	7 131	7 126	7 144	7 153	7 159	7 155	7 164
2003	7 143	7 120	7 115	7 109	7 111	7 103	7 107	7 074	7 079			
Average monthly changes over the last six months												
2001	6	12	16	17	15	16	15	12	7	5	7	8
2002	5	5	7	8	8	4	3	5	5	4	2	6
2003	3	-4	-6	-8	-7	-10	-6	-8	-6			

**Source: CBS**