



Press release

Statistics Netherlands

PR01-140
29-6-2001
9:30 AM

Prices in industry up because of expensive oil

In May the price level of Dutch manufactured goods was up 0.3% on April. According to the latest figures by Statistics Netherlands this turns out to be a consequence of price increases in the oil industry. When these price rises are not taken into account, the price level for Dutch manufactured goods was down 0.4% in May. Domestic selling prices stayed the same in May, while export prices were up by 0.6%.

Compared to May last year the price level of Dutch manufactured goods was higher by an average of 4.1% in May this year. This is the smallest year-on-year increase since September 1999.

Price rises slowing down

In a more long-term perspective the growth rate of price rises for Dutch manufactured goods is slowly decreasing. In the year 2000 prices were on average 11.6% higher than in 1999. The slowdown started at the end of 2000. In the period January through May the prices were on average 5.6% higher than in the same period last year. Price rises in exported and imported products fall faster than the price rises for domestic sales and consumption.

Oil prices up, meat prices down

The higher price level in May of this year compared to April was mainly caused by higher prices in the oil industry (+5.5%). But price rises were also observed in other branches, for instance in products of the base metal and chemical industries.

Apart from price rises, Statistics Netherlands also observed falling prices in May, namely in food and in the paper and cardboard industry. In the food industry meat and meat products became 7.2% cheaper.

Developments in the producer price index are also published on www.cbs.nl.

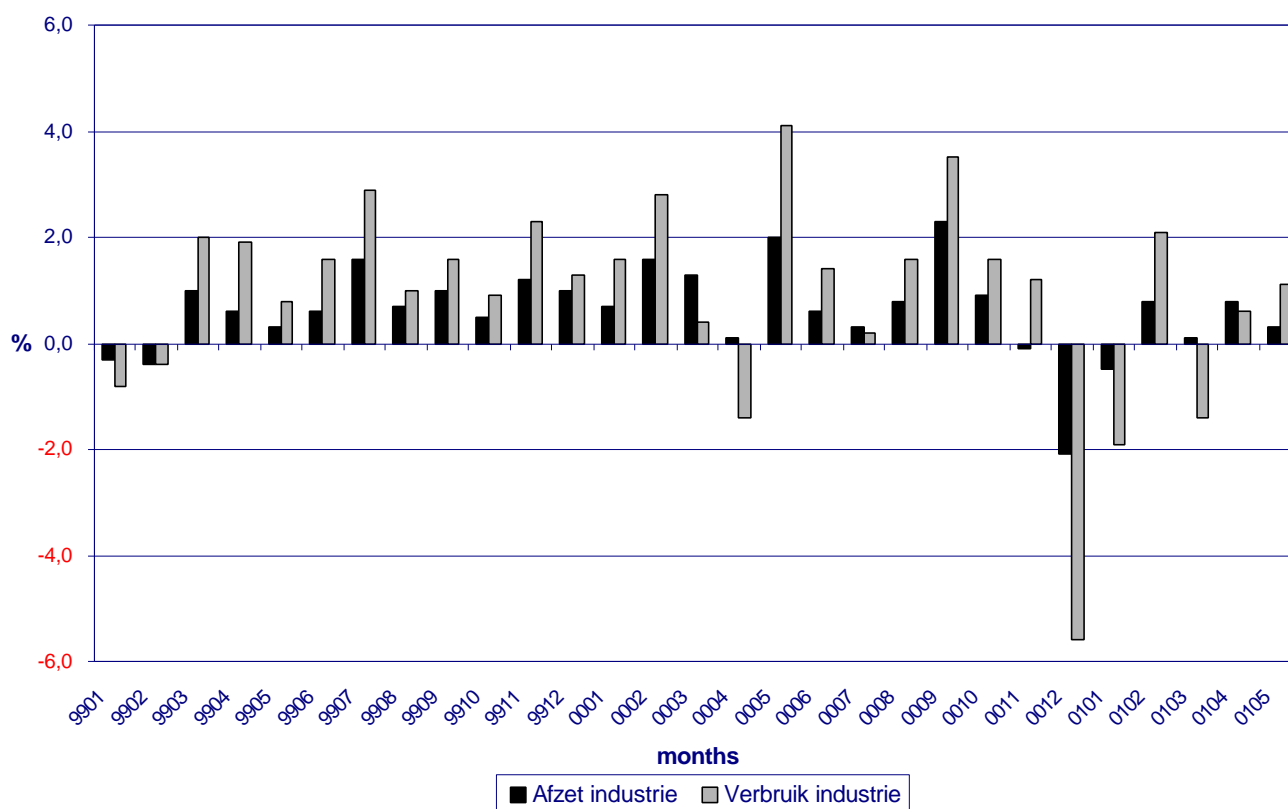
For more information please contact P.E. Luyten tel. (070) 337 47 16.

Statistics Netherlands
Press Office

P.O. Box 4000
2270 JM Voorburg
The Netherlands
tel. +31 70 337 58 16
fax +31 70 337 59 71
e-mail:
persdienst@cbs.nl

Statistics Netherlands
is a department of
the Ministry of
Economic Affairs

**Producer prices,
month on month percentage changes**



Industrial sales and industrial consumption

Table 1: Producer prices compared to a month ago

Year	Month	% changes on a month ago					
		Sales industry			Consumption Industry		
		domestic	abroad	total	domestic	abroad	total
2000	Jan	1.1	0.6	0.7	1.1	2.0	1.6
	Feb	1.1	1.8	1.6	1.6	3.8	2.8
	Mar	0.8	1.5	1.3	0.5	0.3	0.4
	April	-0.3	0.3	0.1	0.0	-2.3	-1.4
	May	1.1	2.5	2.0	2.0	5.6	4.1
	Jun	0.8	0.5	0.6	1.4	1.5	1.4
	Jul	0.5	0.2	0.3	1.3	-0.6	0.2
	Aug	0.4	1.1	0.8	0.9	2.1	1.6
	Sep	1.4	2.8	2.3	2.1	4.5	3.5
	Oct	0.8	0.9	0.9	2.1	1.4	1.6
	Nov	0.3	-0.3	-0.1	0.7	1.7	1.2
	Dec	-0.7	-2.9	-2.1	-1.2	-9.0	-5.6
2001	Jan*	0.4	-1.1	-0.5	-1.5	-2.4	-1.9
	Feb*	0.4	1.0	0.8	1.0	3.2	2.1
	Mar*	-0.1	0.1	0.1	1.6	-3.8	-1.4
	April*	0.2	1.2	0.8	2.1	0.5	1.2
	May*	0.0	0.6	0.3	.	.	.

* Preliminary figures

. Missing data

Adjusted figures in italics

Source: CBS

Table 2: Producer prices compared to a year ago

Year	Month	% changes on the same period a year ago					
		Sales of industry			Consumption industry		
		domestic	abroad	total	domestic	abroad	total
2000	Jan	6.4	11.2	9.2	9.1	28.2	18.9
	Feb	7.7	13.8	11.4	11.5	33.4	22.8
	Mar	8.0	14.2	11.7	10.6	30.3	20.9
	April	7.3	13.4	11.1	11.4	22.1	17.1
	May	8.2	16.0	12.9	12.6	28.1	20.9
	Jun	8.8	15.7	13.0	12.2	28.1	20.6
	Jul	8.0	13.7	11.5	12.0	22.3	17.6
	Aug	7.8	14.2	11.6	12.1	23.4	18.2
	Sep	8.8	15.8	13.0	13.8	25.9	20.4
	Oct	9.2	16.3	13.5	15.0	26.5	21.2
	Nov	9.0	14.1	12.1	15.2	23.8	19.9
	Dec	7.6	9.2	8.6	13.1	10.7	11.8
2001	Jan*	6.9	7.4	7.2	10.3	5.9	7.9
	Feb*	6.0	6.6	6.4	9.6	5.2	7.1
	Mar*	5.1	5.0	5.1	10.9	1.0	5.2
	April*	5.6	6.0	5.8	12.5	3.9	7.7
	May*	4.4	4.1	4.1	.	.	.

* Preliminary figures

. Missing data

Adjusted figures in italics

Source: CBS

Table 3: Producer prices. incl. and excl. the oil industry

Year	Month	% changes on a year ago		% changes on a month ago	
		sales		sales	
		Industry	Industry excl. oil	Industry	Industry excl. oil
2000	Jan	9.2	3.1	0.7	0.7
	Feb	11.4	4.1	1.6	0.7
	Mar	11.7	4.5	1.3	0.5
	April	11.1	5.9	0.1	1.2
	May	12.9	6.5	2.0	0.8
	Jun	13.0	6.3	0.6	0.1
	Jul	11.5	6.4	0.3	0.6
	Aug	11.6	6.8	0.8	0.4
	Sept	13.0	7.0	2.3	0.6
	Oct	13.5	7.3	0.9	0.8
	Nov	12.1	6.9	-0.1	0.2
	Dec	8.6	6.3	-2.1	-0.3
2001	Jan*	7.2	5.9	-0.5	0.4
	Feb*	6.4	5.6	0.8	0.4
	Mar*	5.1	5.6	0.1	0.5
	April*	5.8	4.6	0.8	0.2
	May*	4.1	3.4	0.3	-0.4

* Preliminary figures

Adjusted figures in italics

Bron: CBS

