



Press release

Statistics Netherlands

PR01-58
14-3-2001
9:30 AM

Expenditure on R&D up again

According to Statistics Netherlands Dutch enterprises spent 9.2 billion guilders on in-house R&D during 1999, more than 12% up on 1998. After a period of stagnation in 1998 the trend of rising R&D expenditure was back. The large multi-nationals maintained their share. Compared to other EU member states, the position of Dutch enterprises with regard to R&D improved.

Manufacturing R&D growing fastest

Industrial enterprises do more than three quarters of total in-house R&D spending (worth 7.1 billion guilders). Within industry the 1999 R&D expenditure was up 15% on 1998. There was also increased growth in the services sector (+14%).

Multinationals R&D share stable

The traditionally largest multi-nationals spent about 3.8 billion guilders on in-house R&D in 1999, almost 7% more than in 1998. This brought their share in total R&D costs for enterprises down slightly, but it remained well over 40%.

Dutch R&D-position from an international perspective

In the period 1993-1997 R&D expenditure increased by an average of 9% a year. This trend came to a sudden halt in 1998 when R&D expenditure stabilised at 8.2 billion guilders. R&D expenditure expressed as a percentage of GDP (Gross Domestic Product) therefore fell. The R&D intensity increased again during 1999 due to the great increase in R&D spending. This brought the Dutch R&D intensity back to the EU average, However is still far lagged behind the average for OECD countries.

Statistics Netherlands
Press Office

P.O. Box 4000
2270 JM Voorburg
The Netherlands
tel. +31 70 337 58 16
fax +31 70 337 59 71
e-mail:
persdienst@cbs.nl

Statistics Netherlands
is a department of
the Ministry of
Economic Affairs

G.W. Meinen, tel. (070) 337 42 28, e-mail: stats.r&d@cbs.nl.

Table 1: in-house R&D expenditure by enterprises

	1999				1998
	Total	Size (number of employees)			Total
		10- 50	50-200	200 or more	
	<i>million guilders</i>				
Total	9227	767	1083	7377	8199
w.v. Industry	7084	225	665	6195	6140
Services	1580	410	340	831	1387
Other ¹⁾	563	132	79	352	672

Bron: CBS

1) The dip in this sector is due to the improved reporting by several respondents.

Figure 1: R&D by enterprises as a percentage of GDP

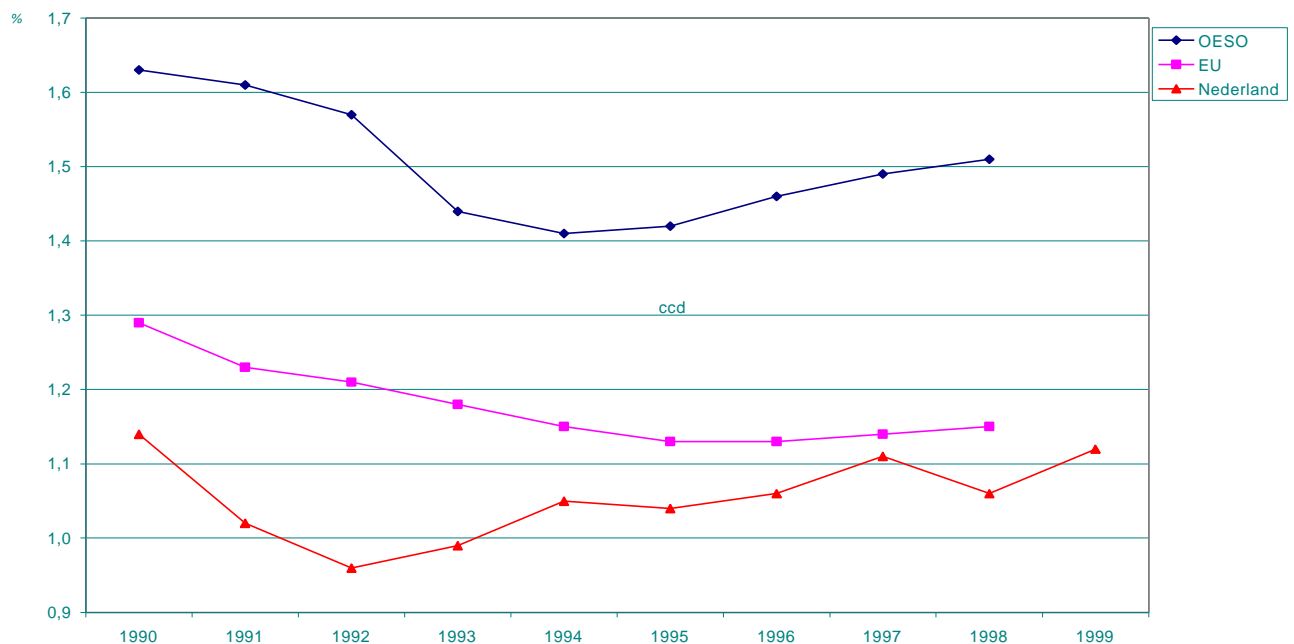


Table 2: R&D expenditure by enterprises

As a percentage of GDP

	Netherlands	EU	OECD
year			

1990	1.14	1.29	1.63
1991	1.02	1.23	1.61
1992	0.96	1.21	1.57
1993	0.99	1.18	1.44
1994	1.05	1.15	1.41
1995	1.04	1.13	1.42
1996	1.06	1.13	1.46
1997	1.11	1.14	1.49
1998	1.06	1.15	1.51
1999	1.12	.	.

Source: OECD MSTI No. 2, 2000, Statistics Netherlands.