

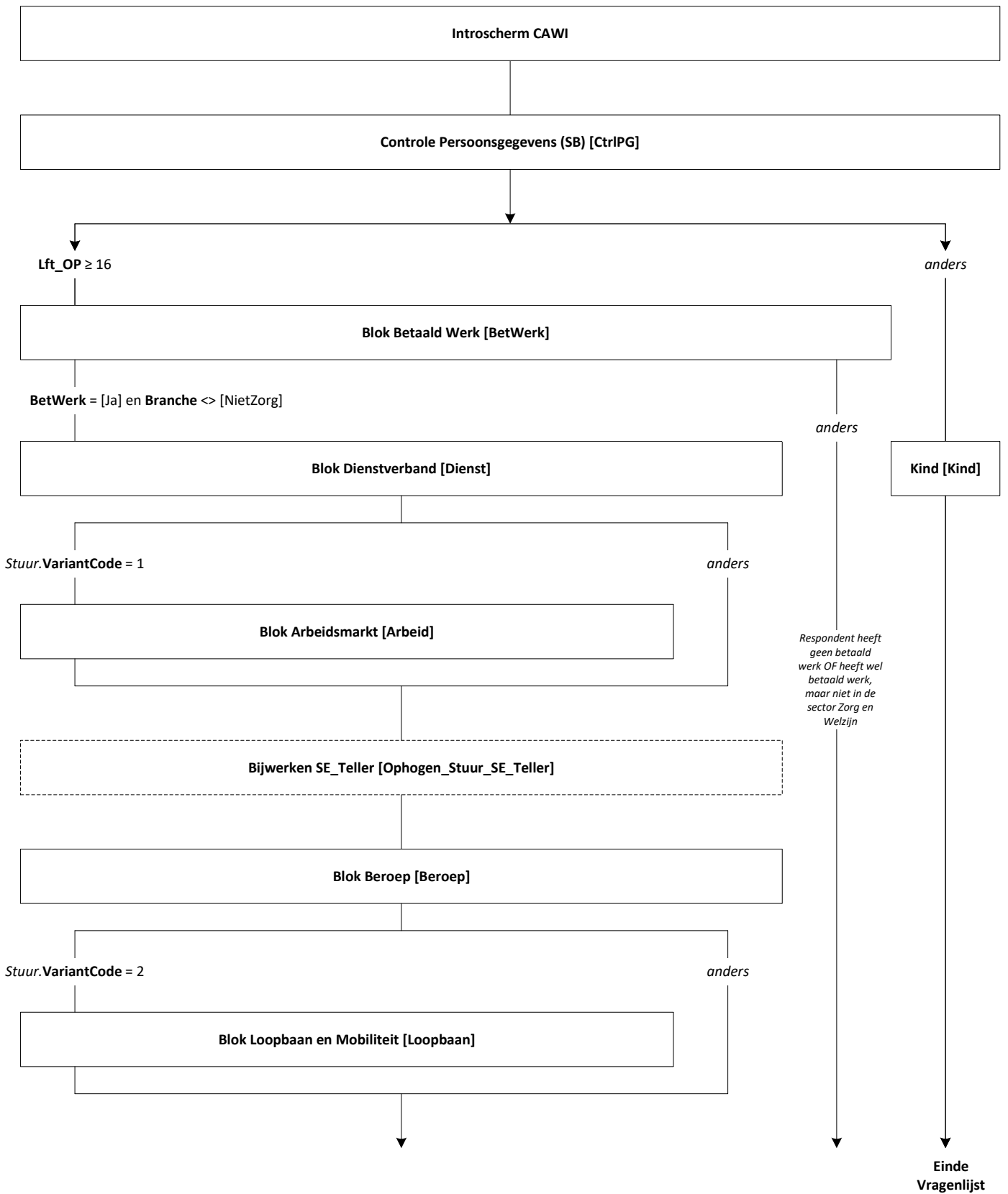


Centraal Bureau
voor de Statistiek

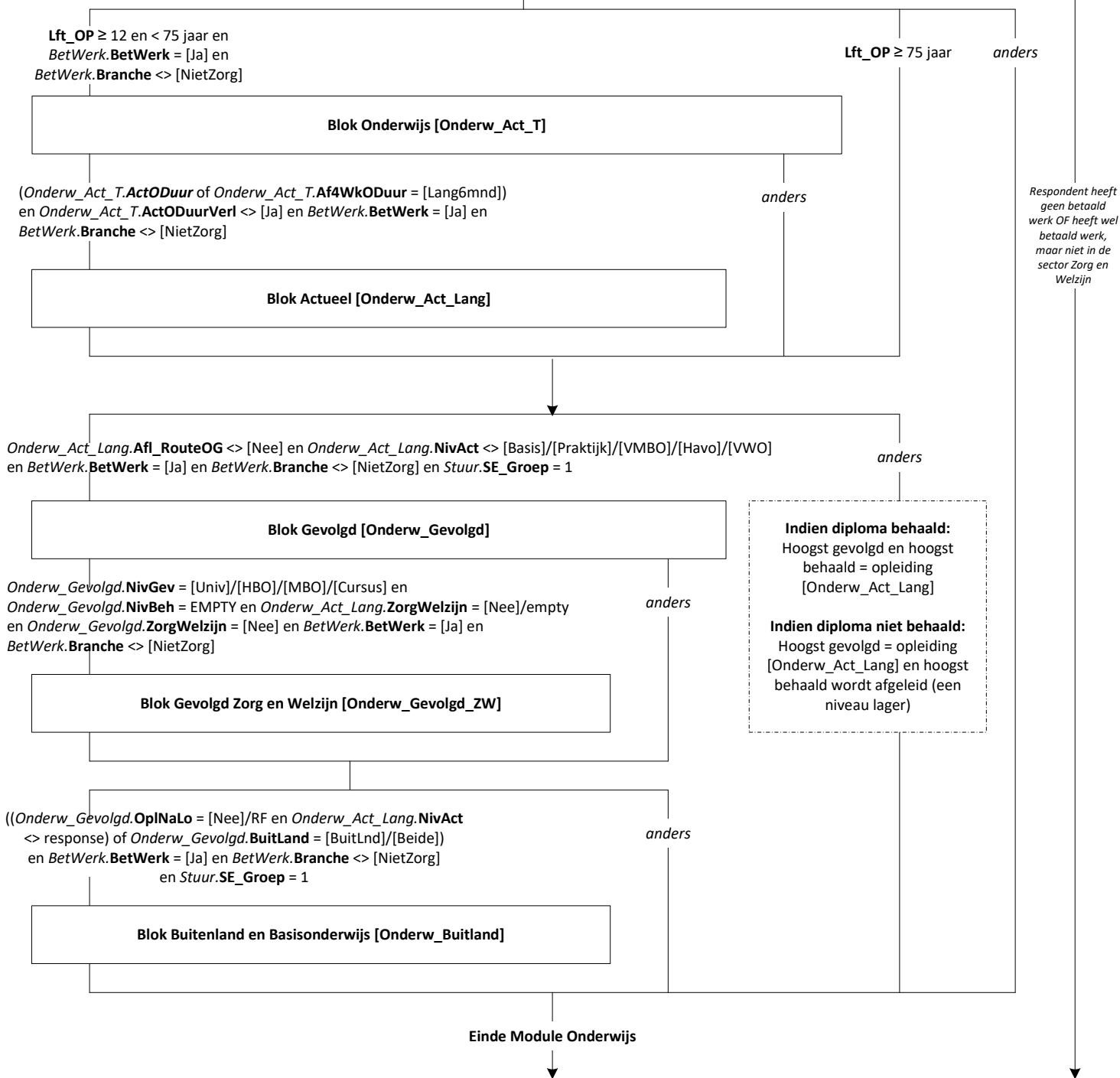
AZW-panel werknemers Peiling 13 – nov 2025

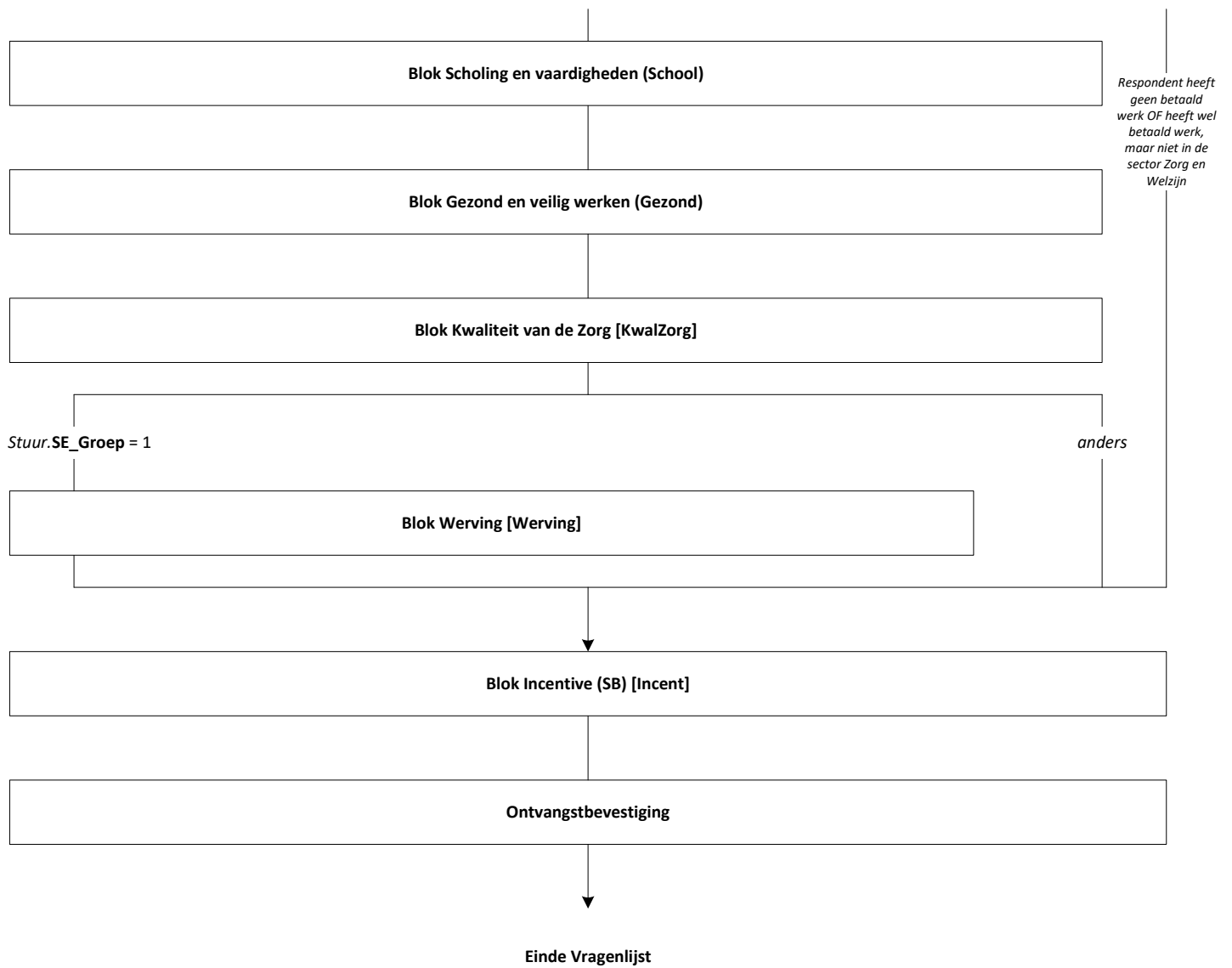
**Rachel Vis-Visschers
Jeanine Schurer**

Versie: 1.1
Datum: 28-8-2025

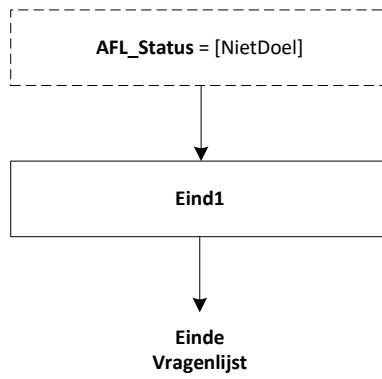


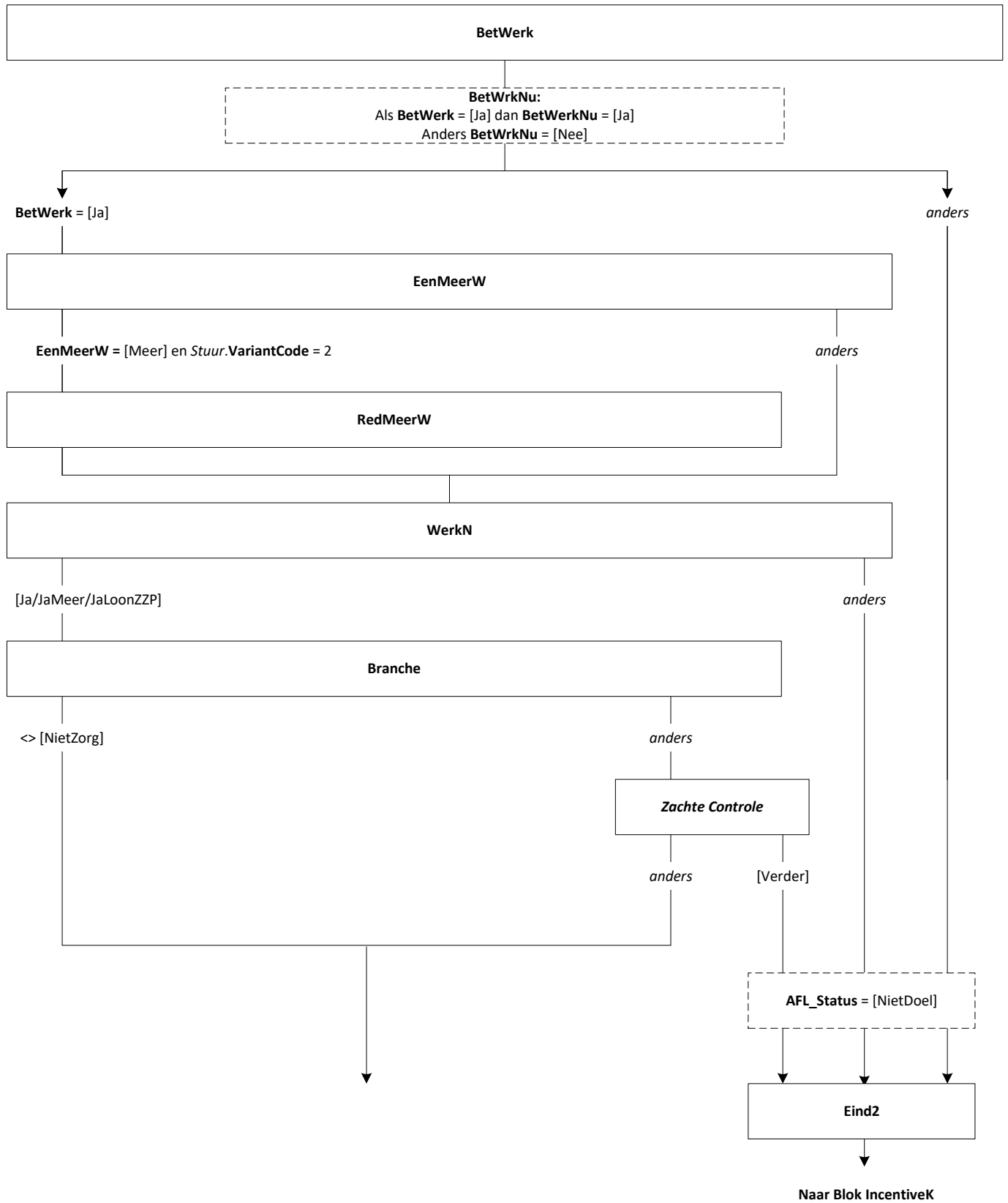
Start Module Onderwijs

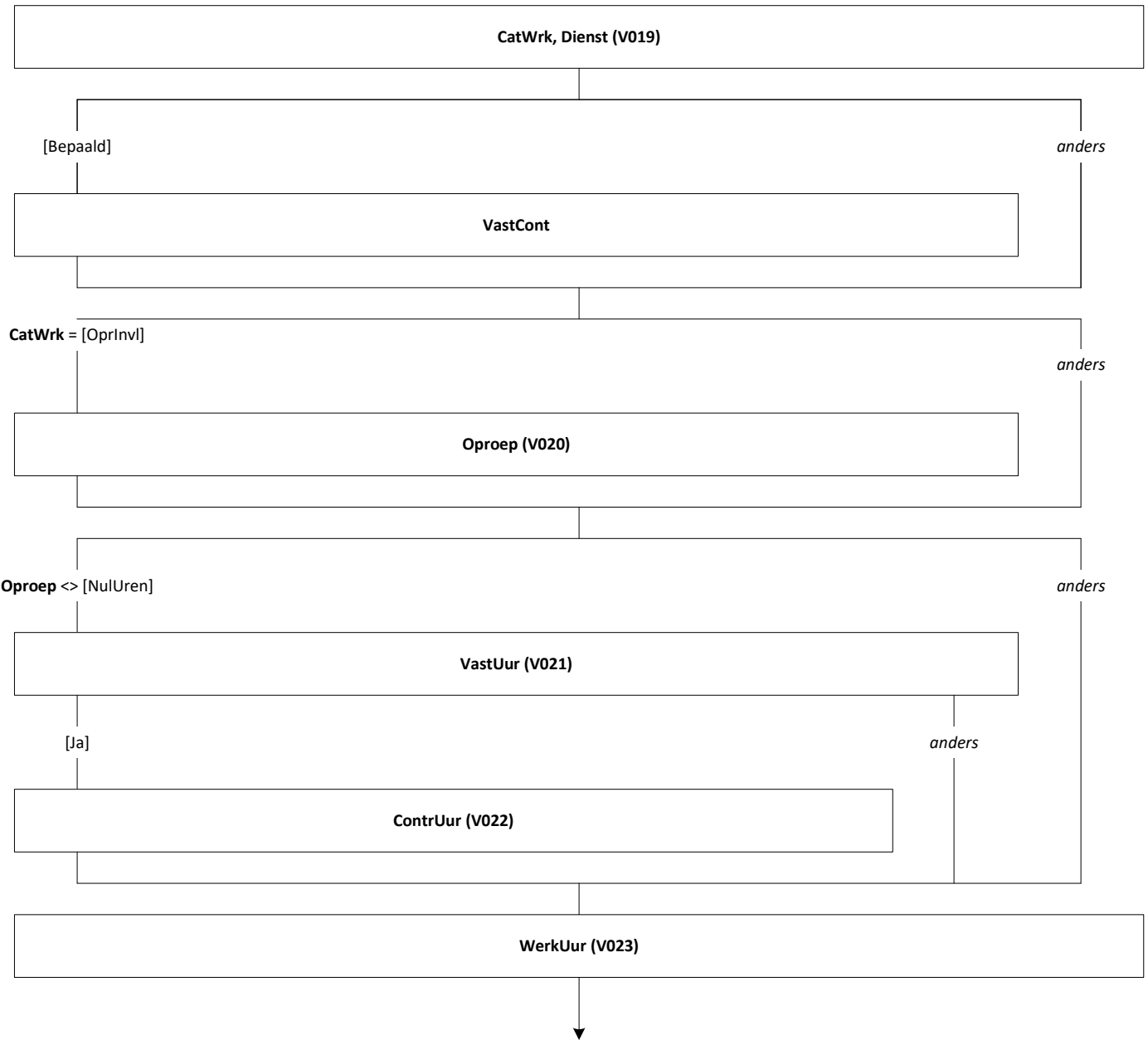


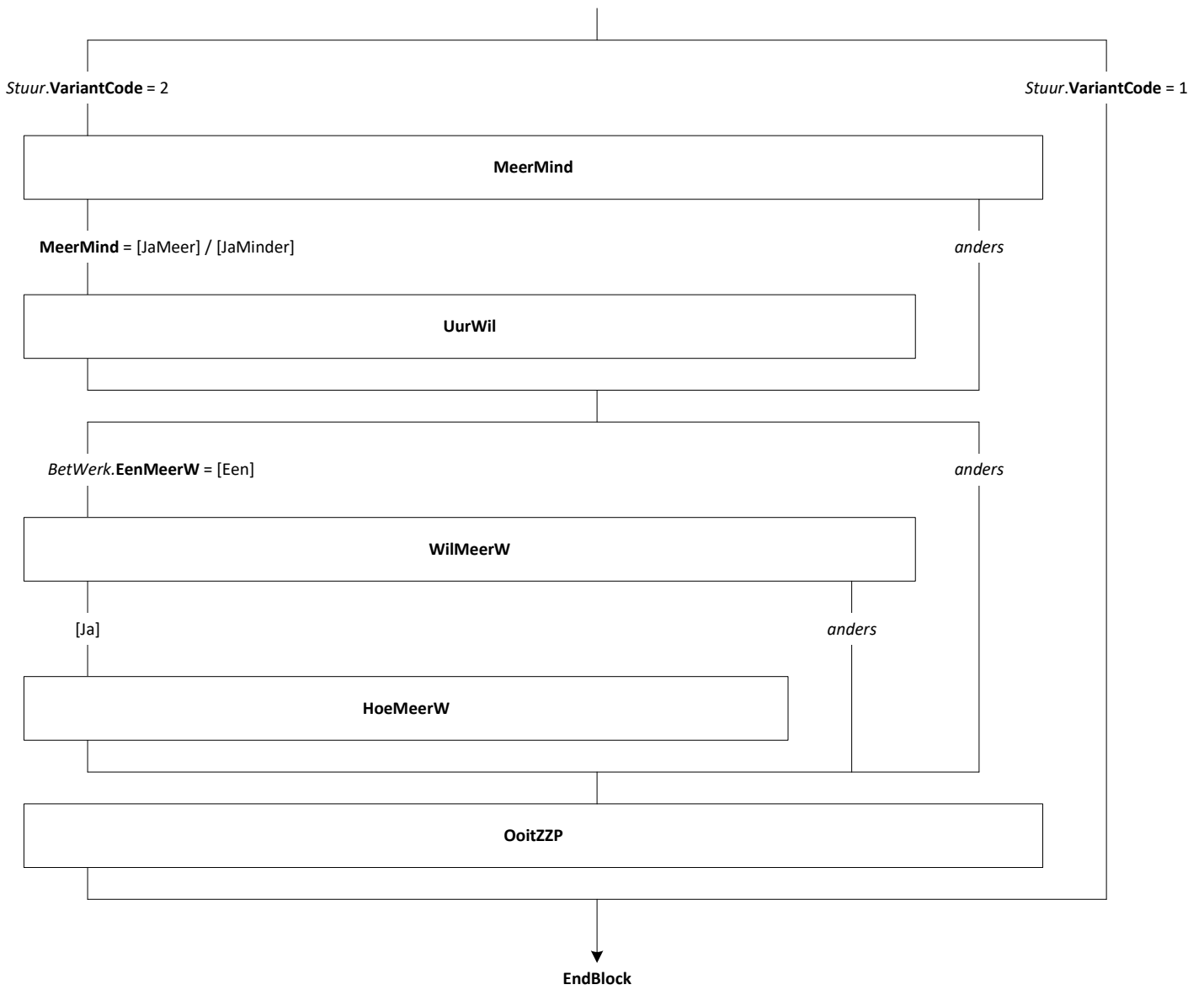


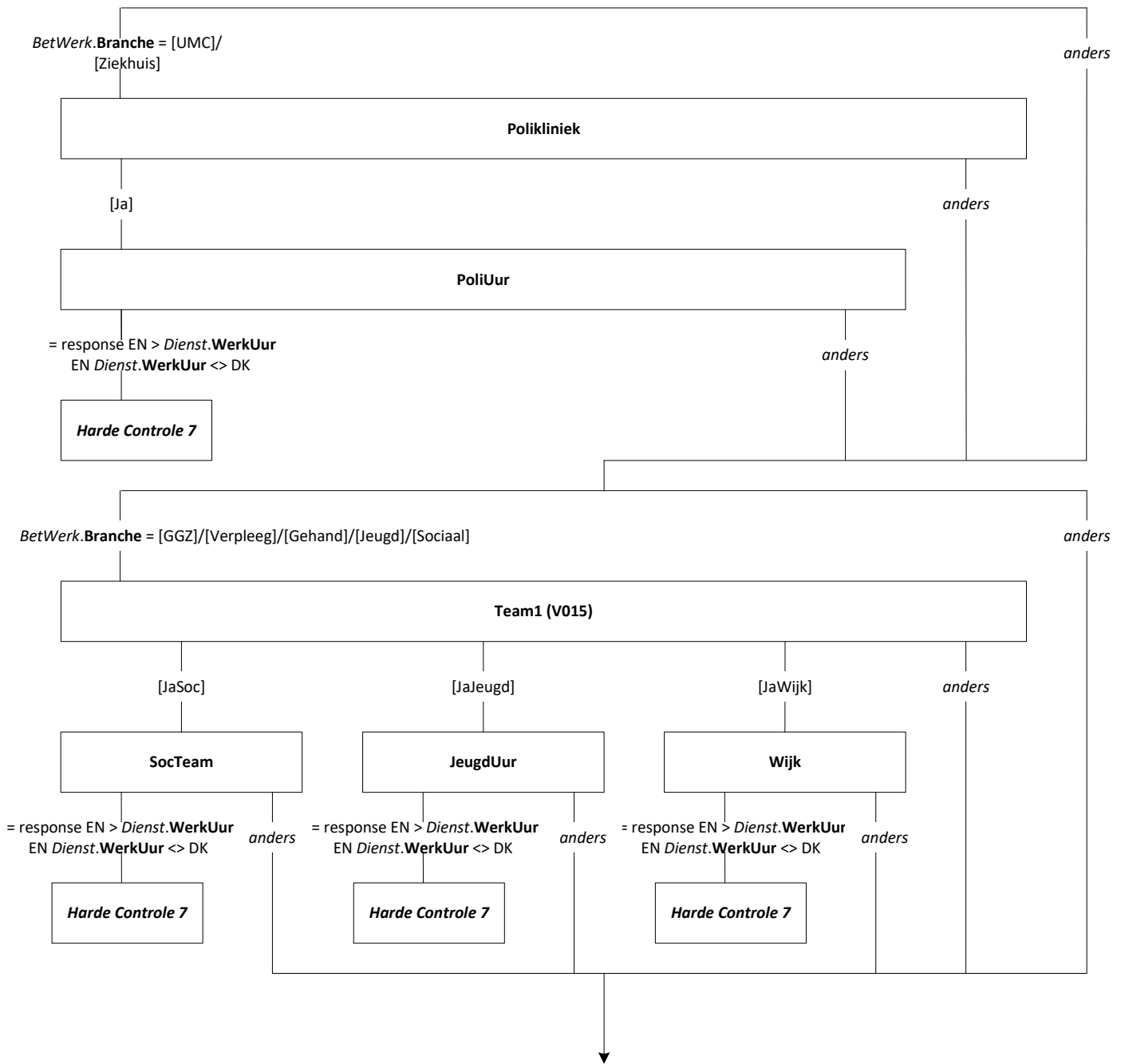


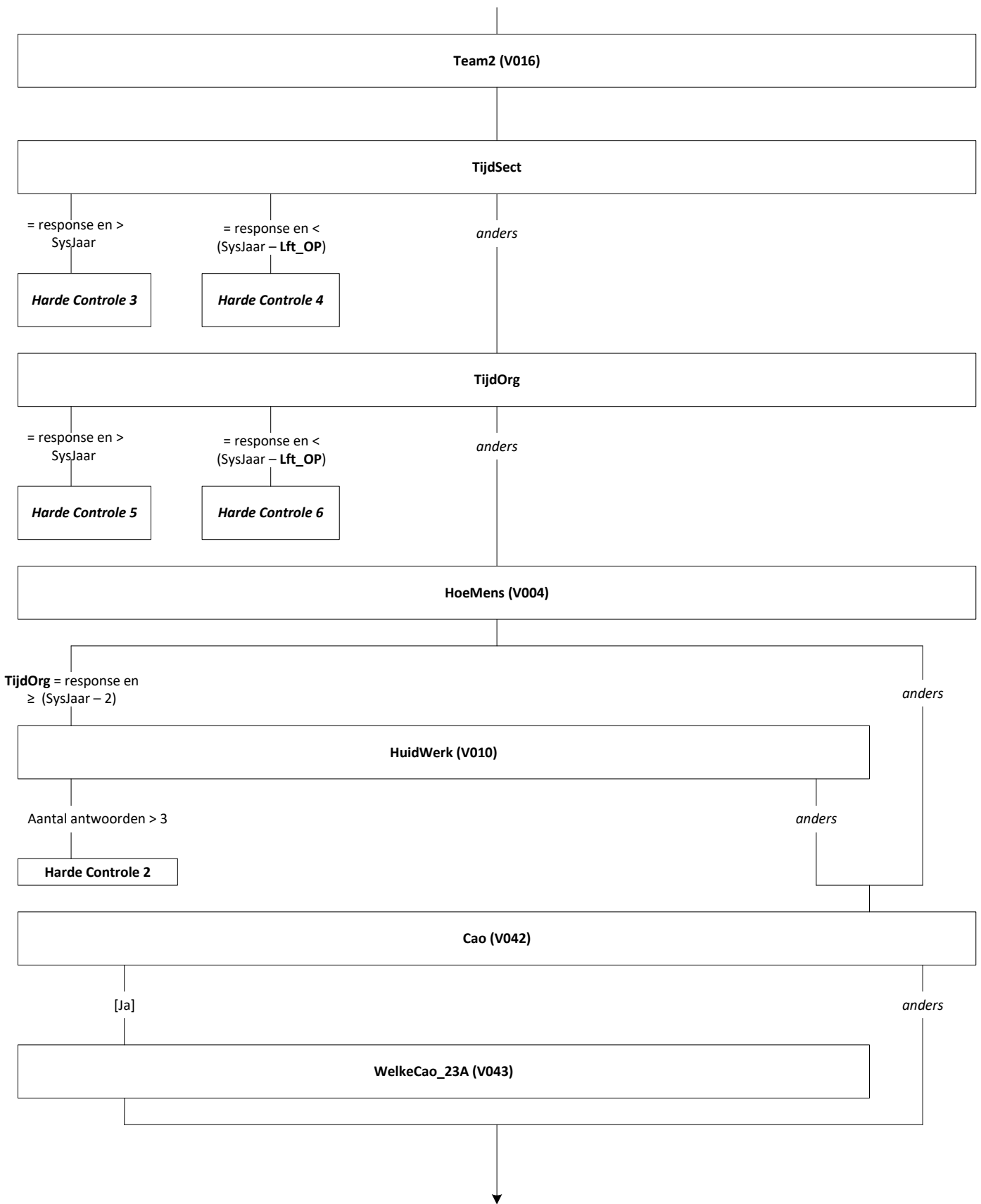


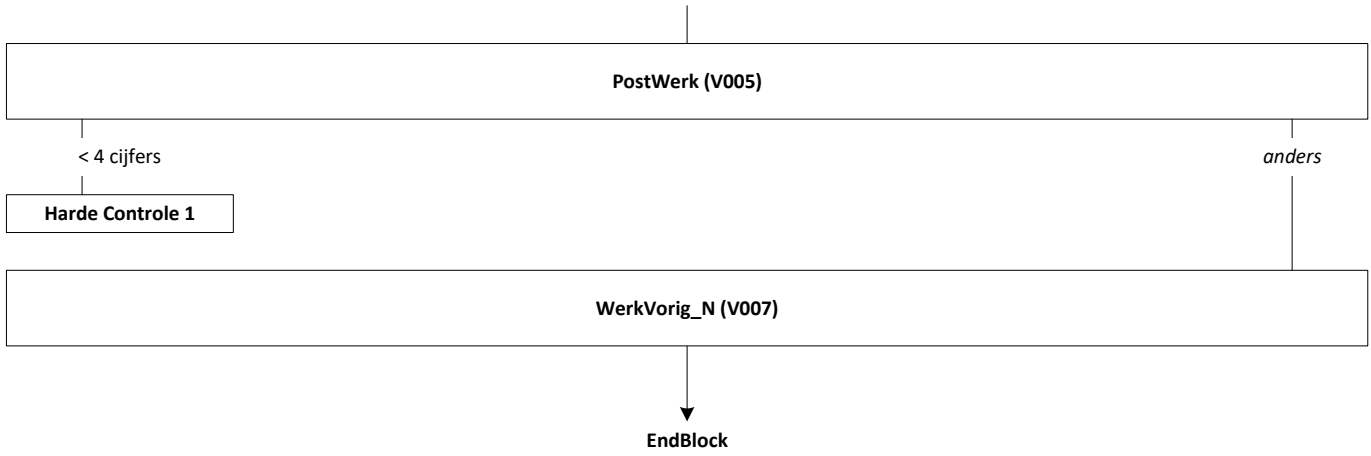


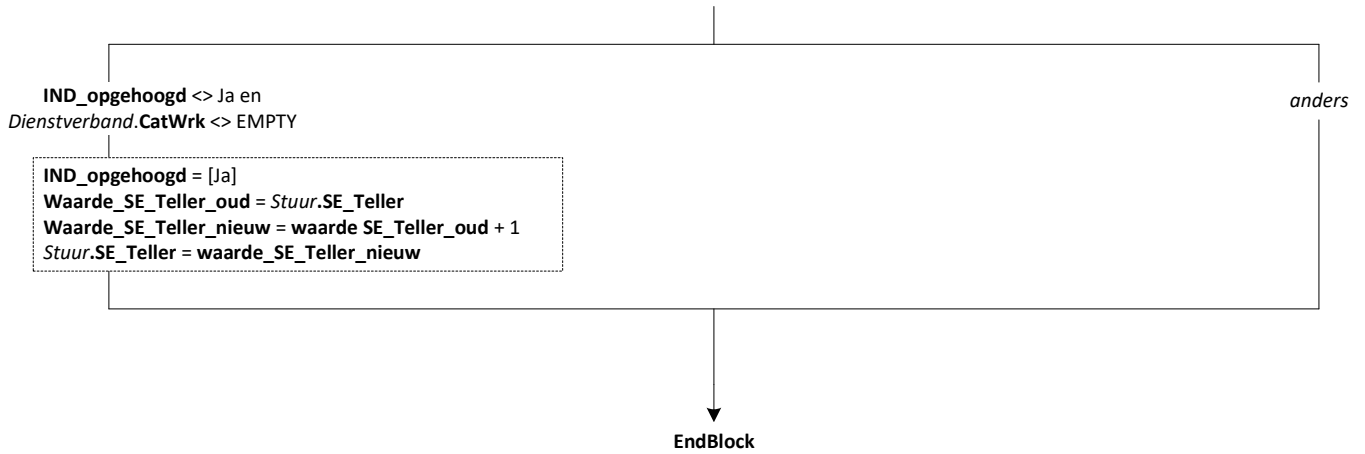


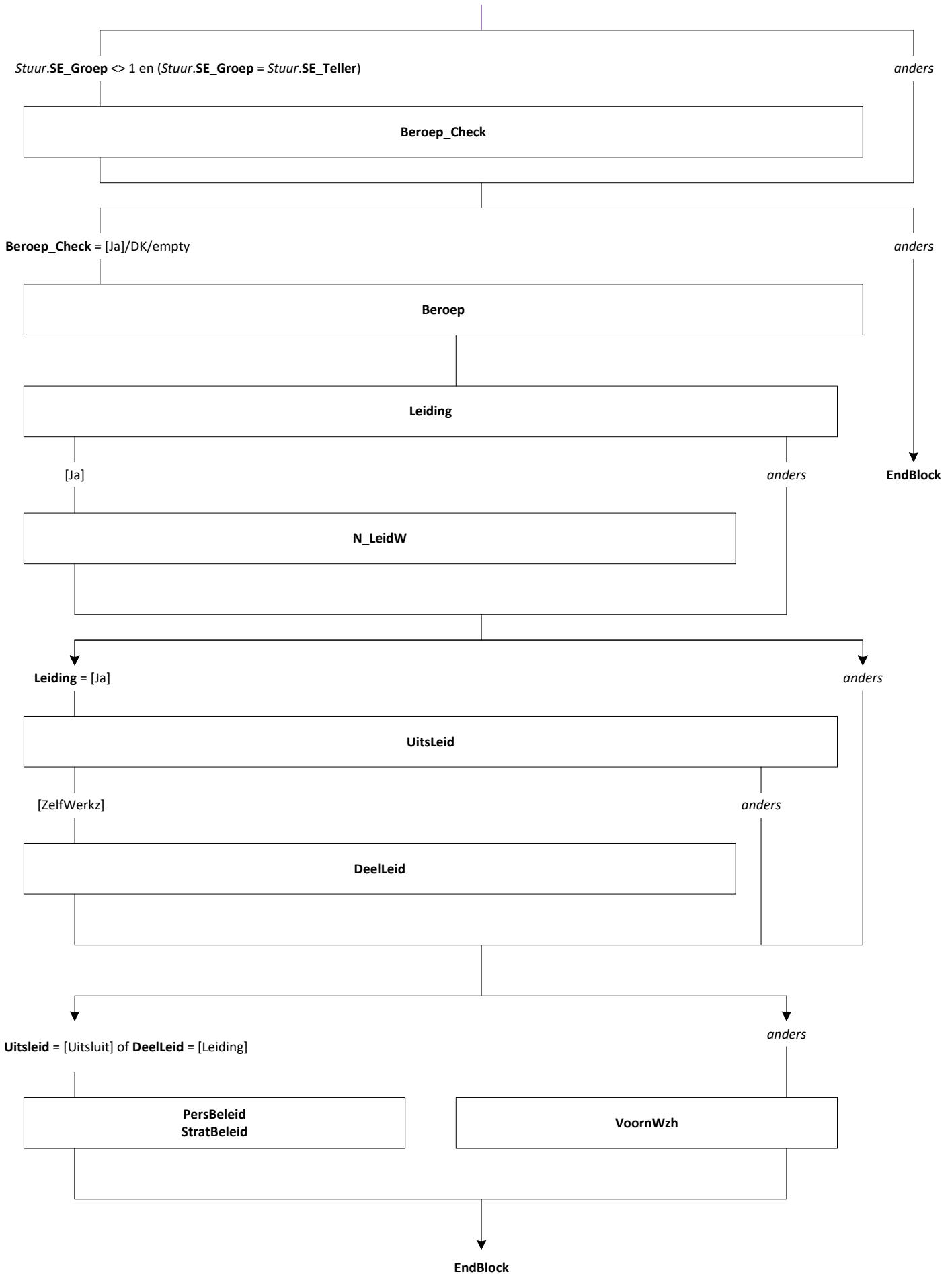


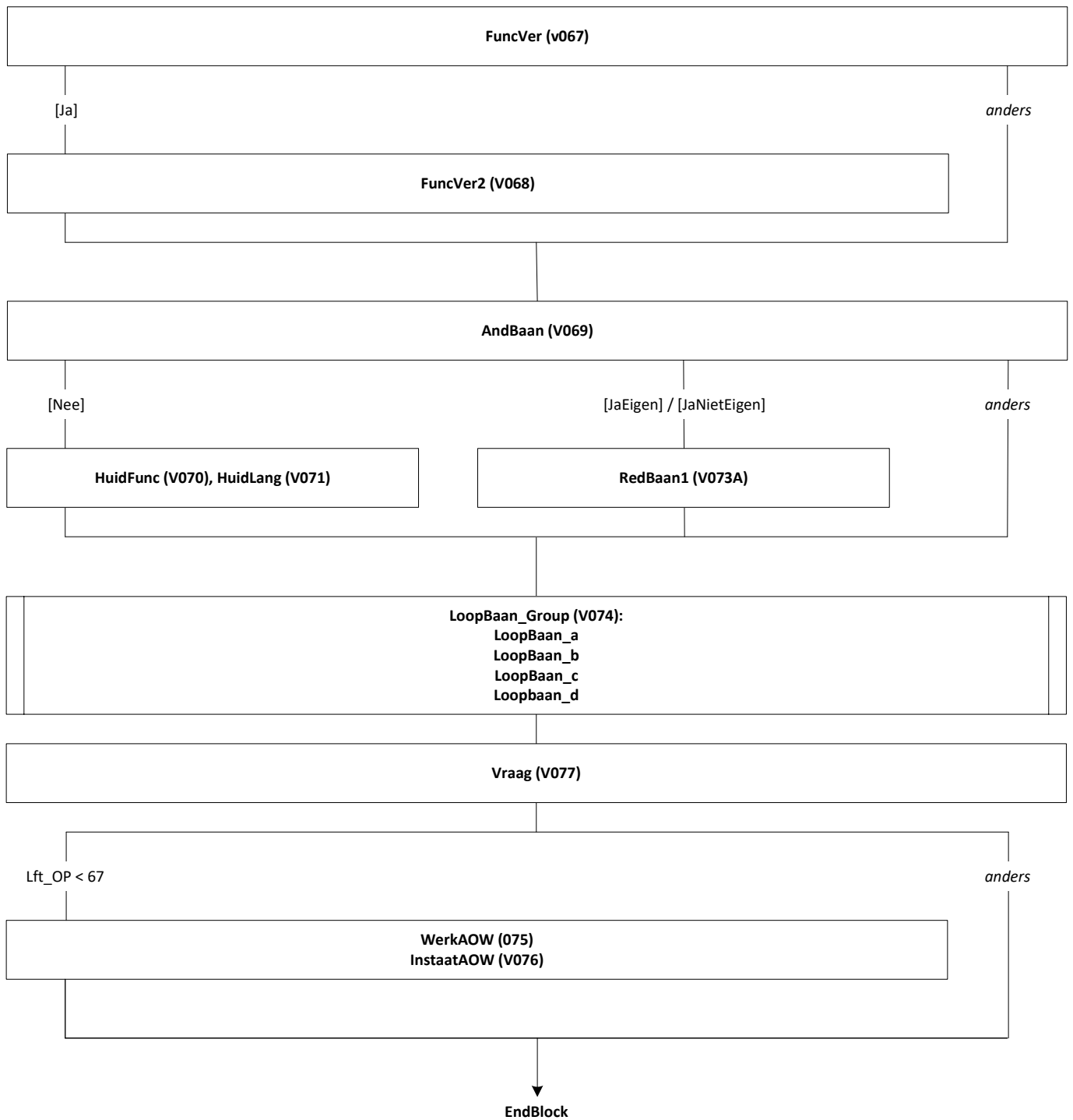


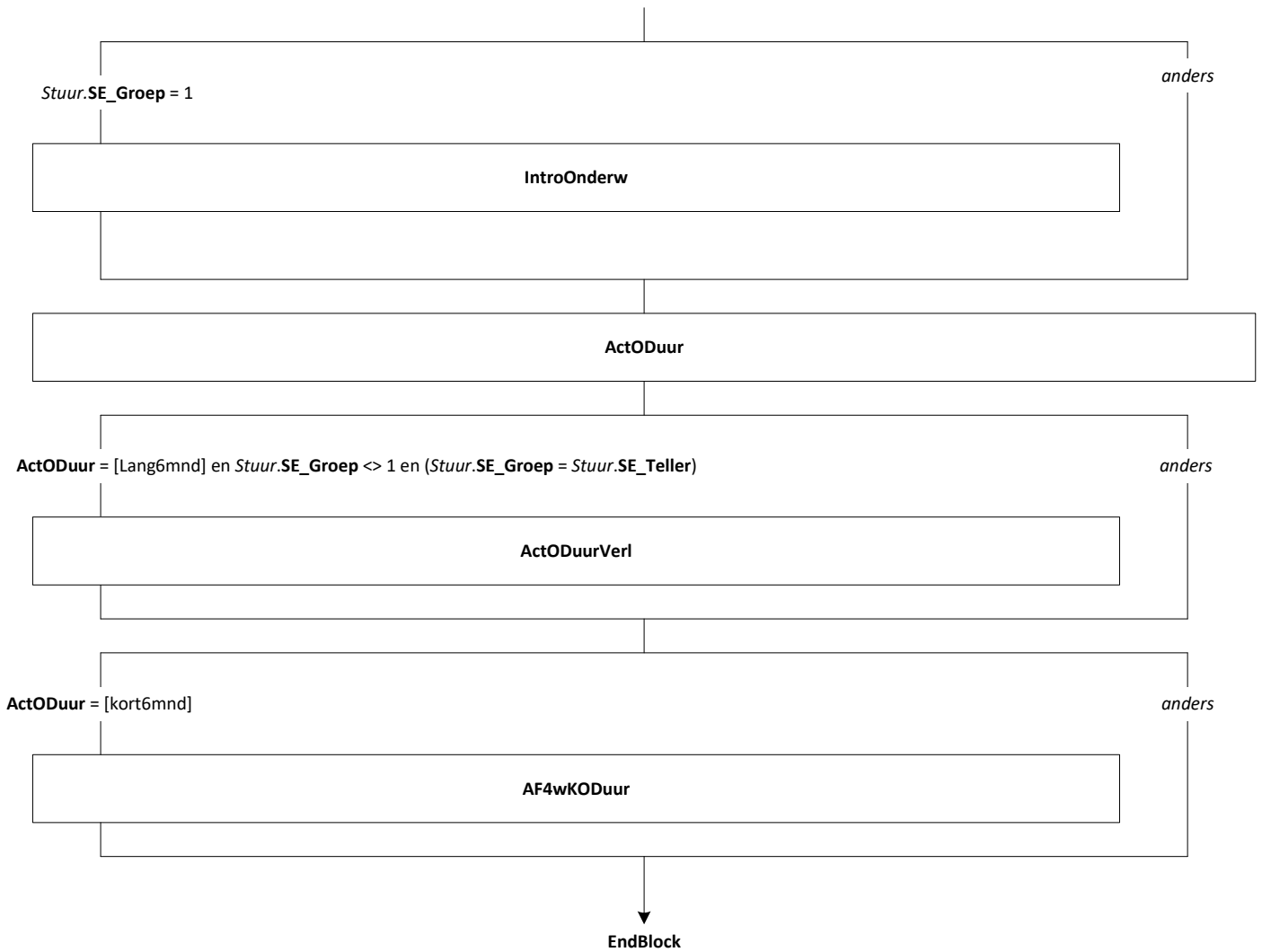


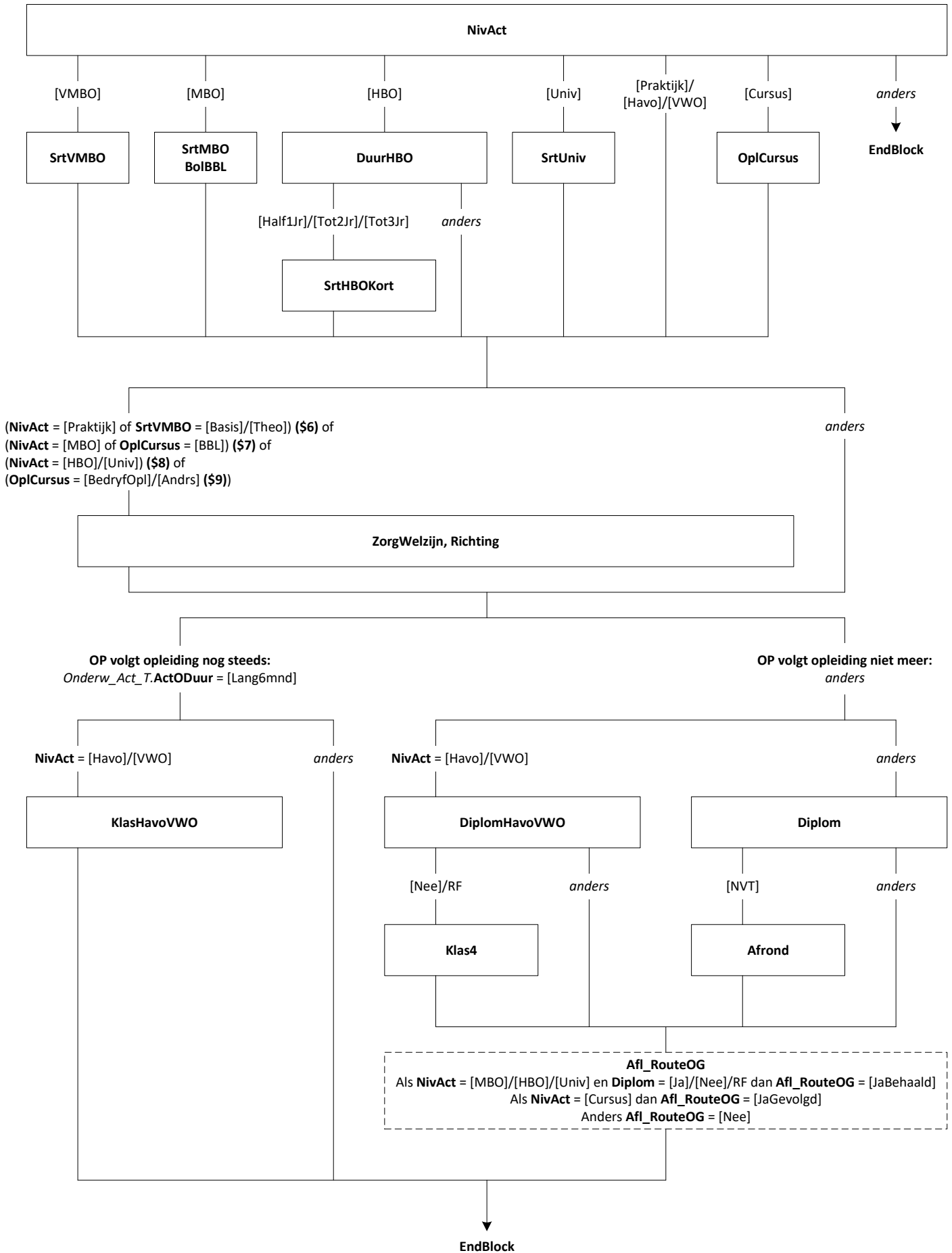


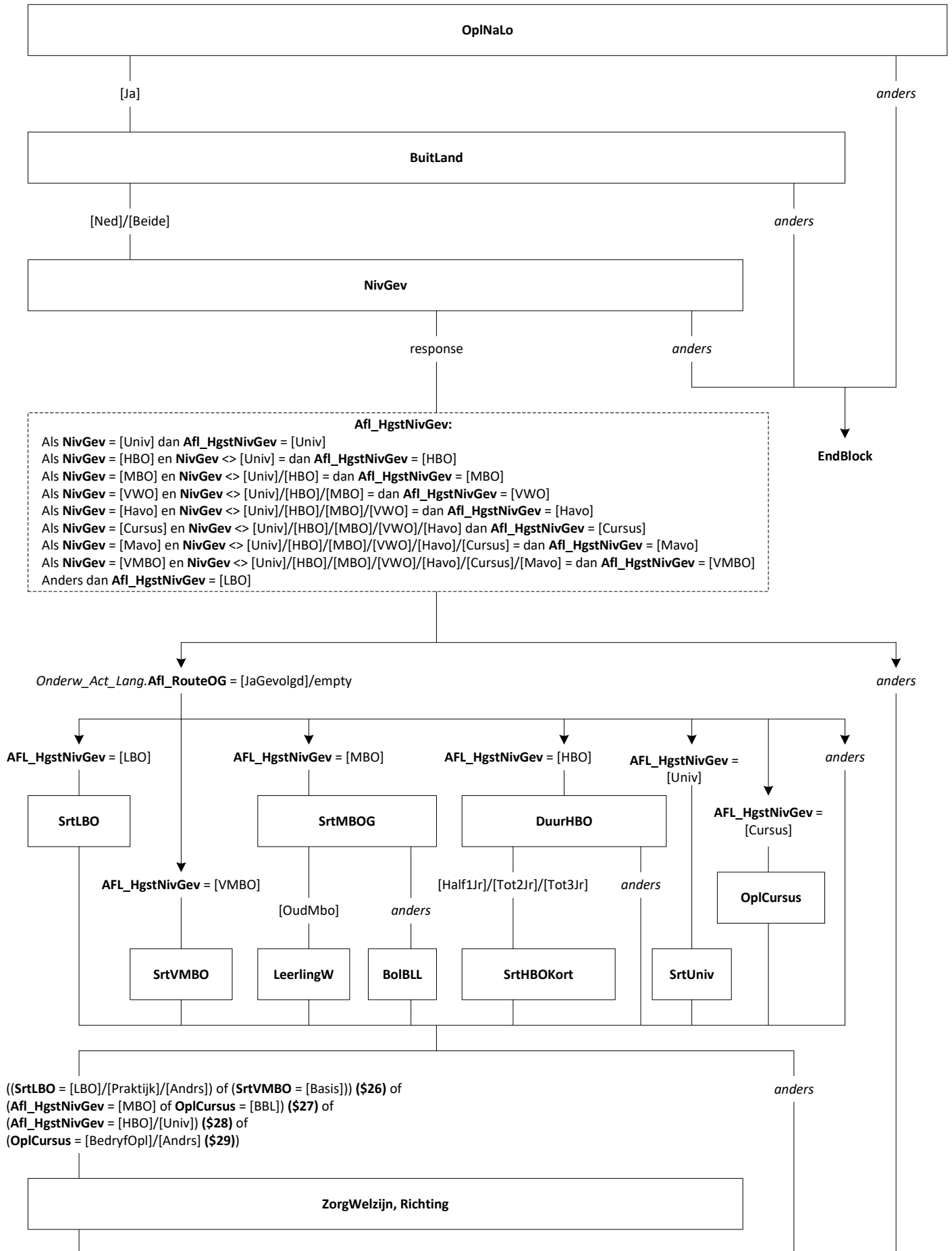


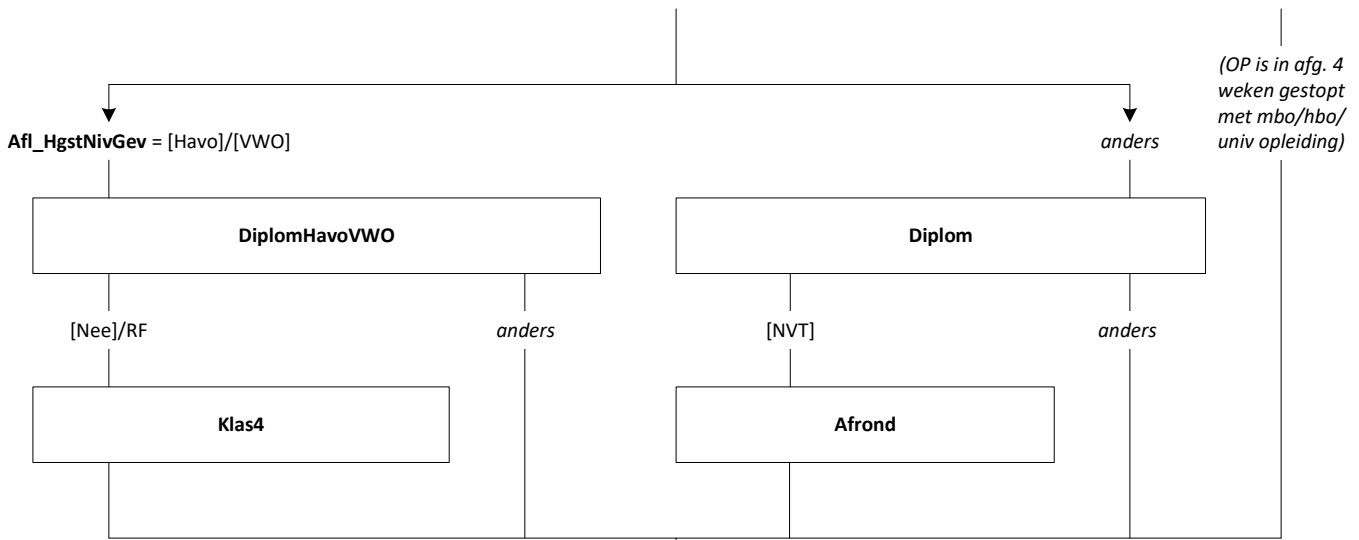






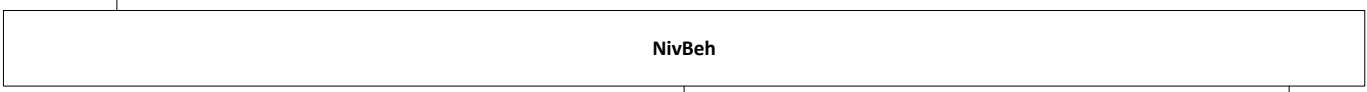






(OP is in afg. 4 weken gestopt met mbo/hbo/ univ opleiding)

- (1) (Afl_HgstNivGev = [Cursus]/[MBO]/[HBO]/[Univ] of (Afl_HgstNivGev = [MAVO] en NivGev = [LBO]/[VMBO])) en (Diplom = [Nee] of Afrond = [Nee]) of
- (2) Afl_HgstNivGev = [VWO] en Klas4 = [Nee] en NivGev = [LBO]/[VMBO]/[MAVO]/[Havo]/[Cursus] of
- (3) Afl_HgstNivGev = [Havo] en Klas4 = [Nee] en NivGev = [LBO]/[VMBO]/[MAVO]/[Cursus] of
- (4) Onderw_Act_Lang.Afl_RouteOG = [JaBehaald]



response

anders

Afl_HgstNivBeh:
 Als NivBeh = [Univ] dan Afl_HgstNivBeh = [Univ]
 Als NivBeh = [HBO] en NivBeh <> [Univ] = dan Afl_HgstNivBeh = [HBO]
 Als NivBeh = [MBO] en NivBeh <> [Univ]/[HBO] = dan Afl_HgstNivBeh = [MBO]
 Als NivBeh = [VWO] en NivBeh <> [Univ]/[HBO]/[MBO] = dan Afl_HgstNivBeh = [VWO]
 Als NivBeh = [Havo] en NivBeh <> [Univ]/[HBO]/[MBO]/[VWO] = dan Afl_HgstNivBeh = [Havo]
 Als NivBeh = [Cursus] en NivBeh <> [Univ]/[HBO]/[MBO]/[VWO]/[Havo] dan Afl_HgstNivBeh = [Cursus].
 Als NivBeh = [Mavo] en NivBeh <> [Univ]/[HBO]/[MBO]/[VWO]/[Havo]/[Cursus] = dan Afl_HgstNivBeh = [Mavo]
 Als NivBeh = [VMBO] en NivBeh <> [Univ]/[HBO]/[MBO]/[VWO]/[Havo]/[Cursus]/[Mavo] = dan Afl_HgstNivBeh = [VMBO]
 Als NivBeh = [LBO] en NivBeh <> [Univ]/[HBO]/[MBO]/[VWO]/[Havo]/[Cursus]/[Mavo]/[VMBO] = dan Afl_HgstNivBeh = [LBO].
 Anders dan Afl_HgstNivBeh = [GeenDeze]

- (1) NivGev = [VWO] en Afl_HgstNivGev <> [VWO] en (Afl_HgstNivBeh < [VWO] of Afl_HgstNivBeh = [Cursus]/[GeenDeze])
- (2) NivGev = [Havo] en Afl_HgstNivGev <> [Havo] en (Afl_HgstNivBeh < [Havo] of Afl_HgstNivBeh = [Cursus]/[GeenDeze])

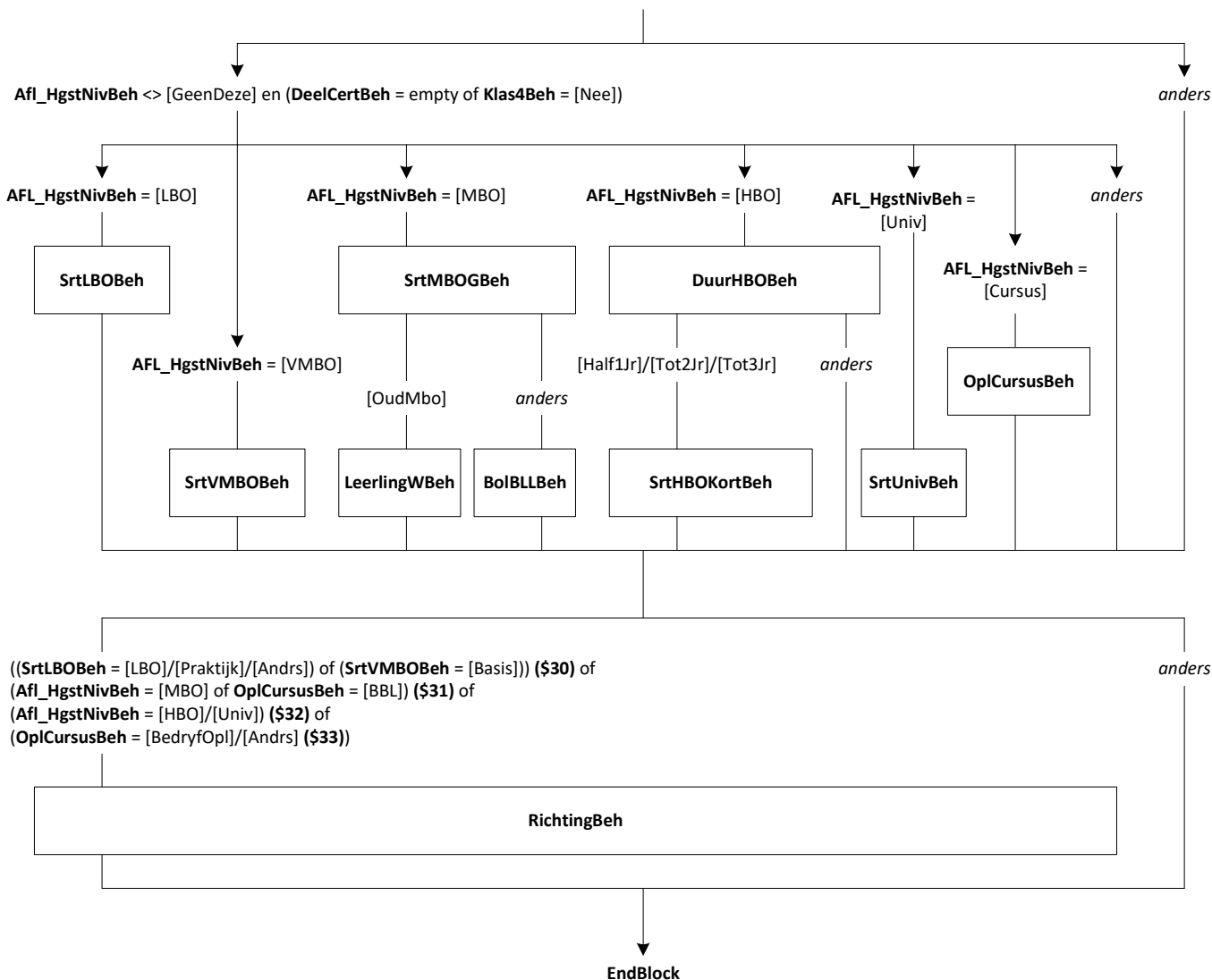


[Nee]/RF

anders



EndBlock



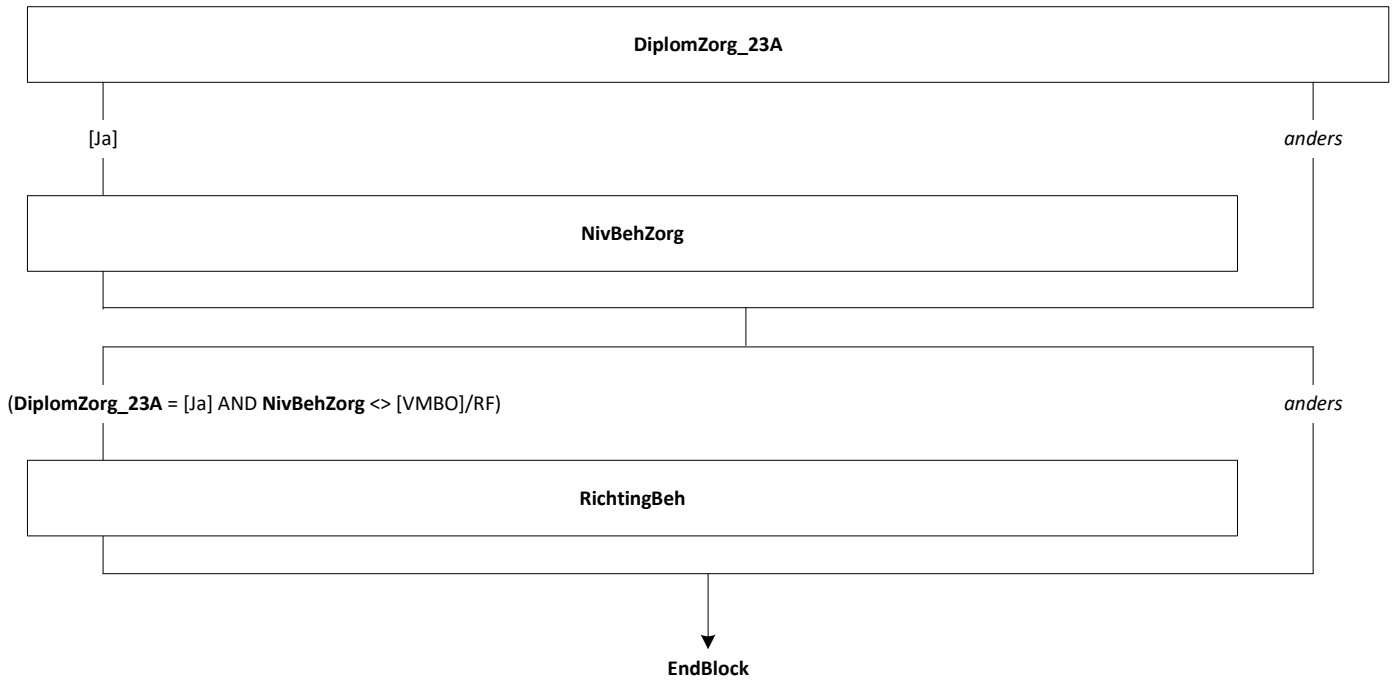


Onderwijs: Blok Gevolgd Zorg en Welzijn

[Onderw_Gevolgd_ZW]

Mode = CAWI

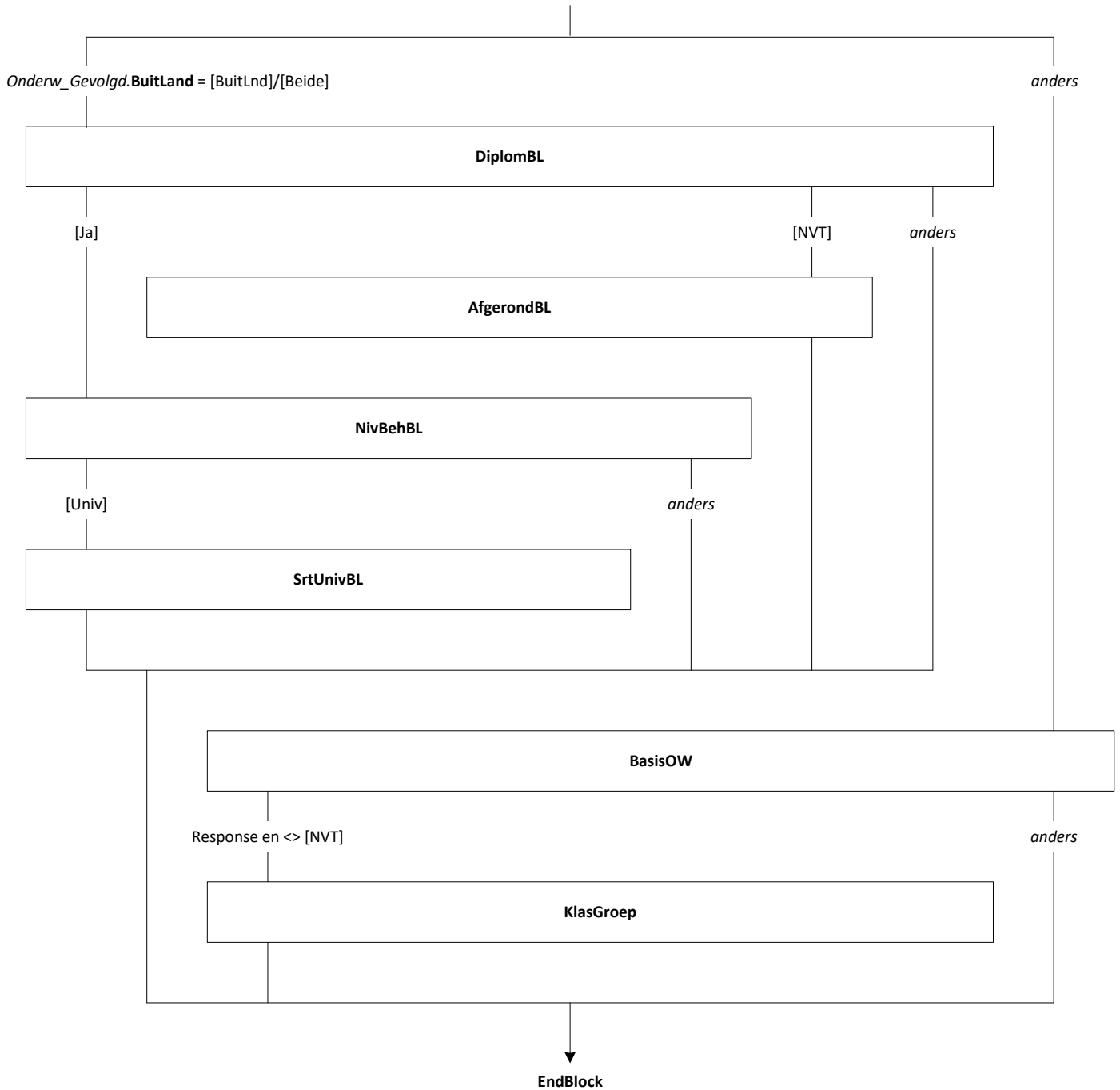
Blokvoorwaarde = *Onderw_Gevolgd.NivGev* = [Univ]/[HBO]/[MBO]/[Cursus] en
Onderw_Gevolgd.NivBeh = EMPTY en *Onderw_Act_Lang.ZorgWelzijn* = [Nee]/
empty en *Onderw_Gevolgd.ZorgWelzijn* = [Nee]
en *BetWerk.BetWerk* = [Ja] en *BetWerk.Branche* <> [NietZorg]

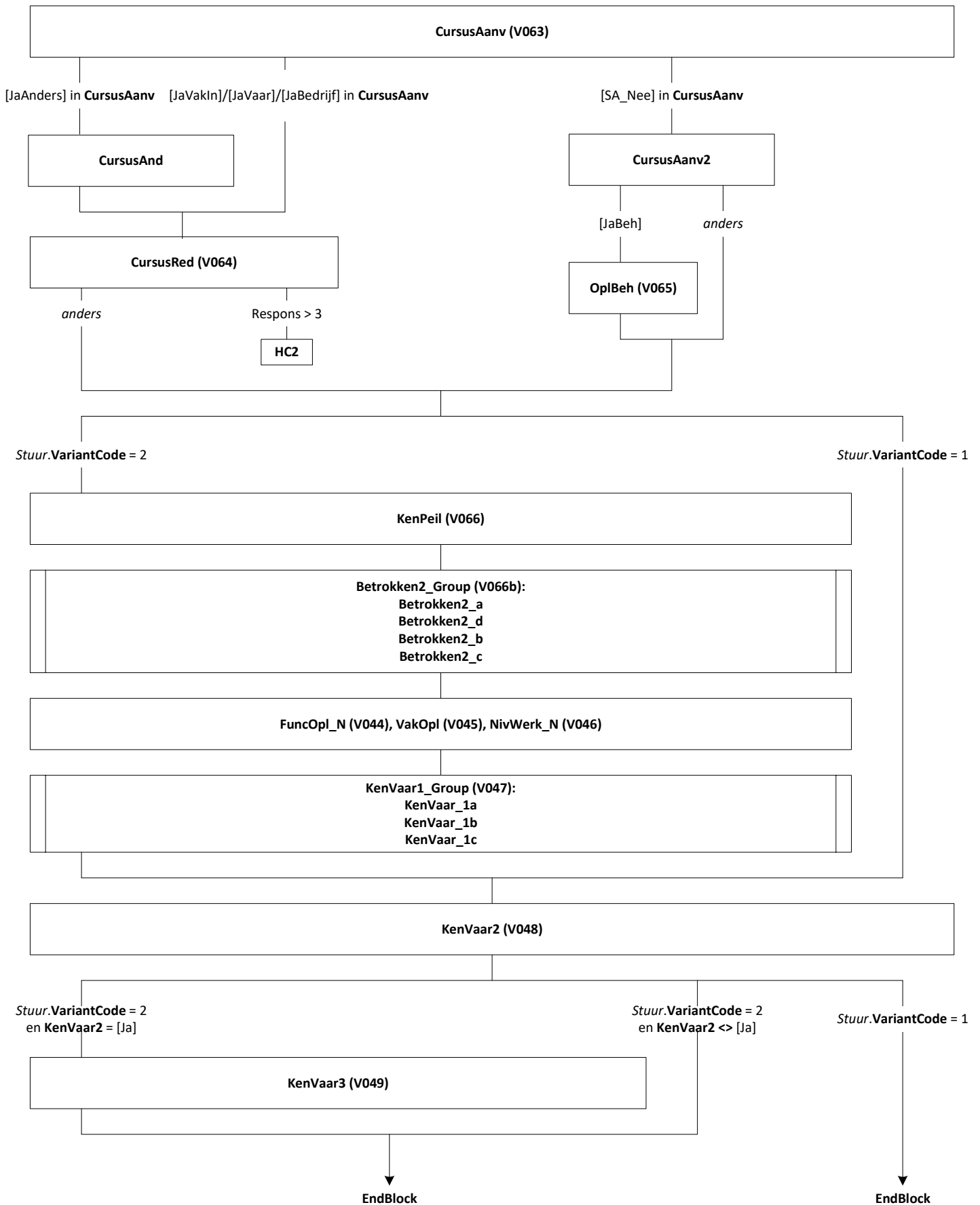


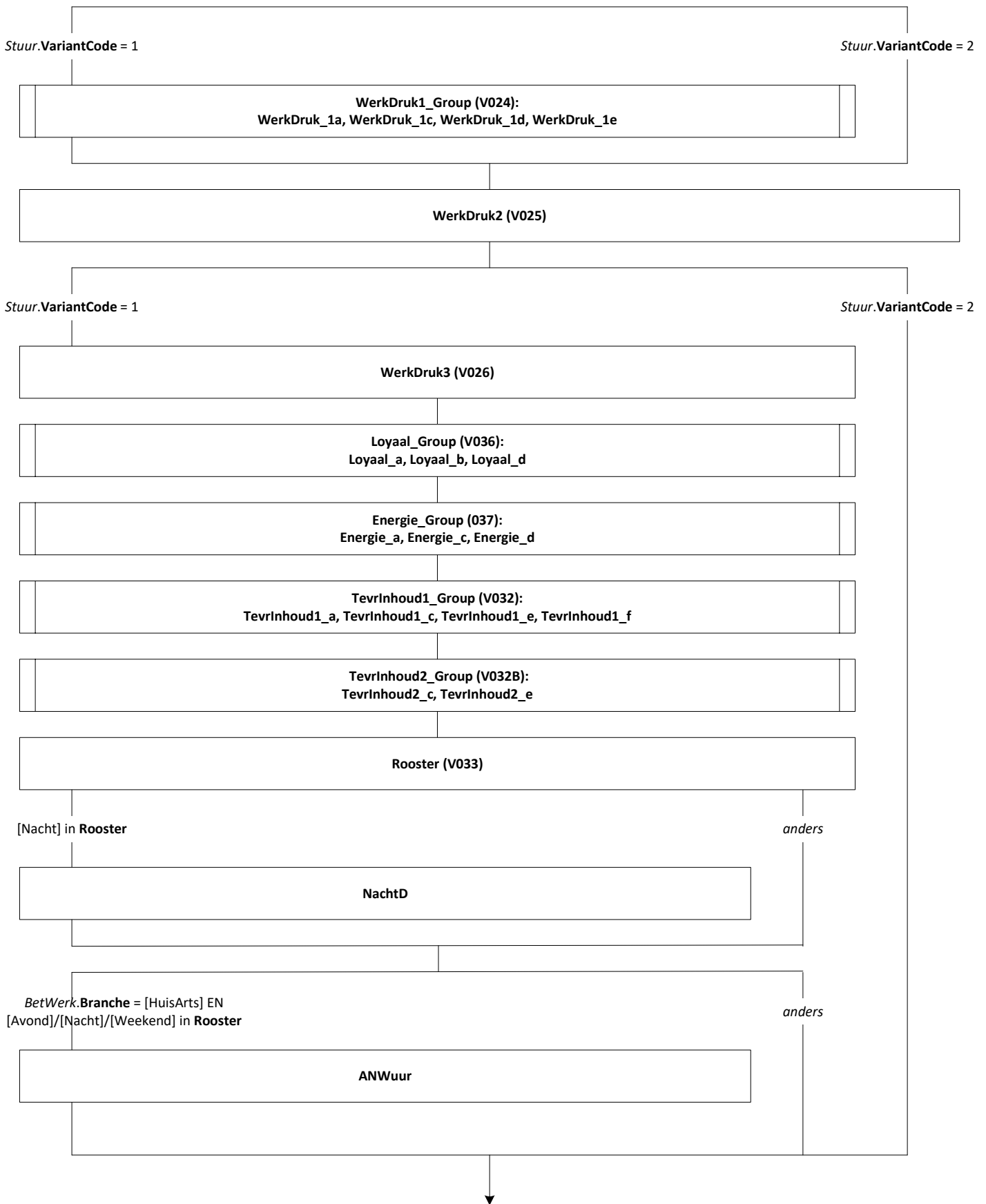


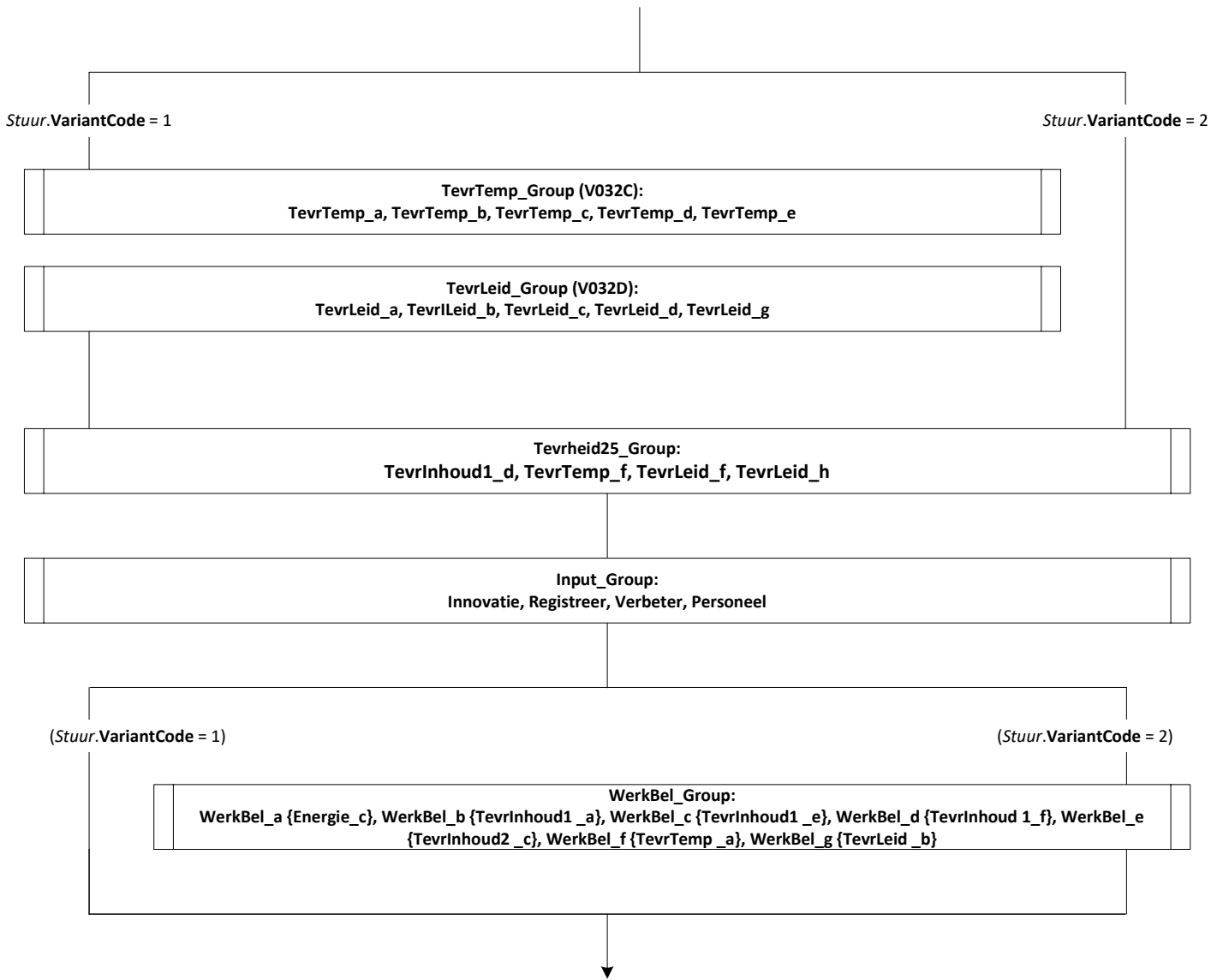
Onderwijs: Blok Buitenland en Basisonderwijs [Onderw_Buitland]

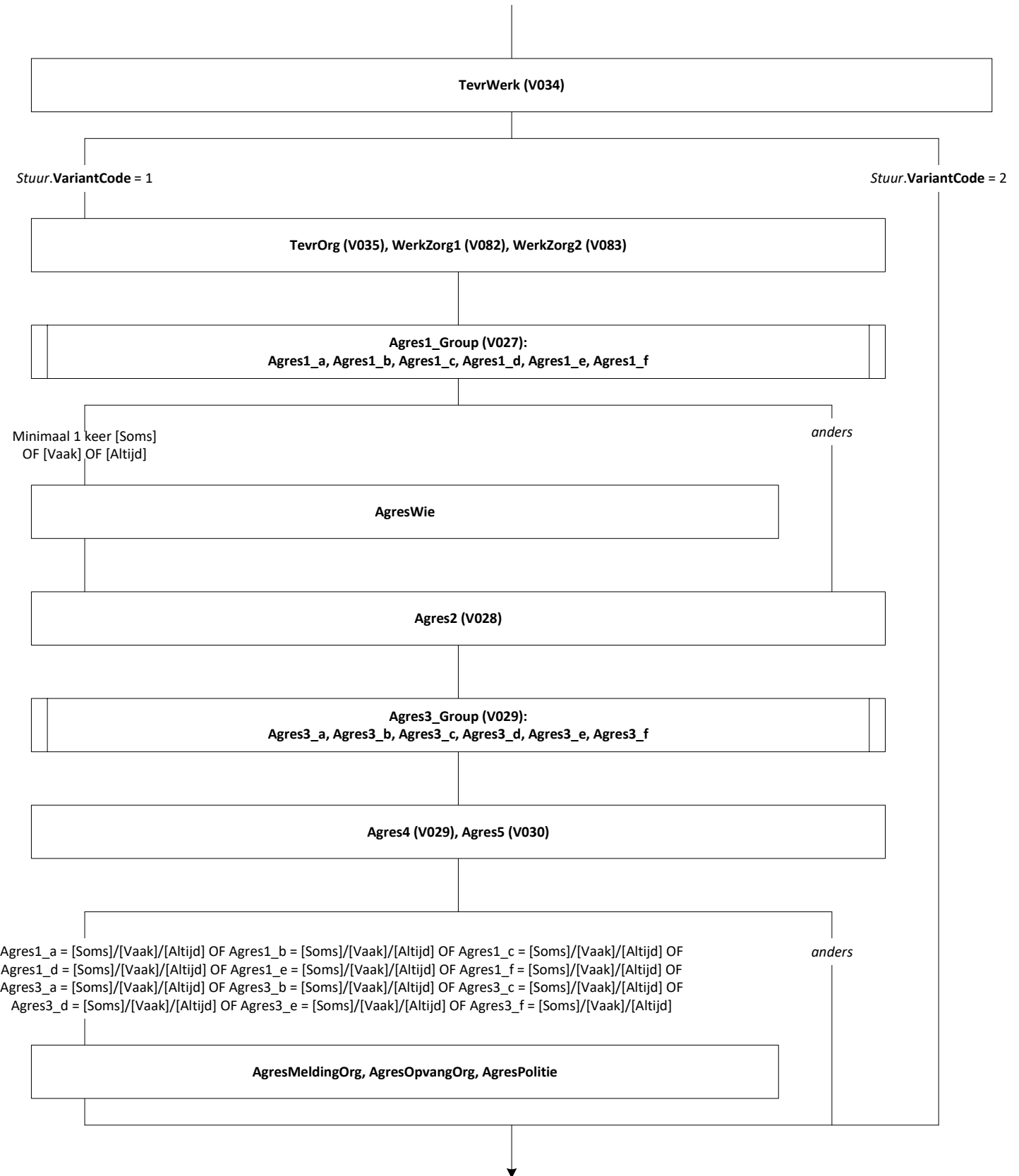
Mode = CAWI
Blokvoorwaarde = ((Onderw_Gevolgd.OplNaLo = [Nee]/RF en
Onderw_Act_Lang.NivAct <> response) of Onderw_Gevolgd.BuitLand =
[BuitLnd]/[Beide])
en BetWerk.BetWerk = [Ja] en BetWerk.Branche <> [NietZorg]
en Stuur.SE_Groep = 1











VerdeelTaak:
VerdeelTaak.Verleen (Waarde)
VerdeelTaak.Verslag (Waarde)
VerdeelTaak.Registreer (Waarde)
VerdeelTaak.Overig (Waarde)
VerdeelTaak.Totaal (Totaal)

Totaal <> 100

anders

Harde Controle 1

Stuur.VariantCode = 1

Stuur.VariantCode = 2

OnderBez (v038)

Technologie25

[Andrs]

anders

Technologie25_Andrs

anders

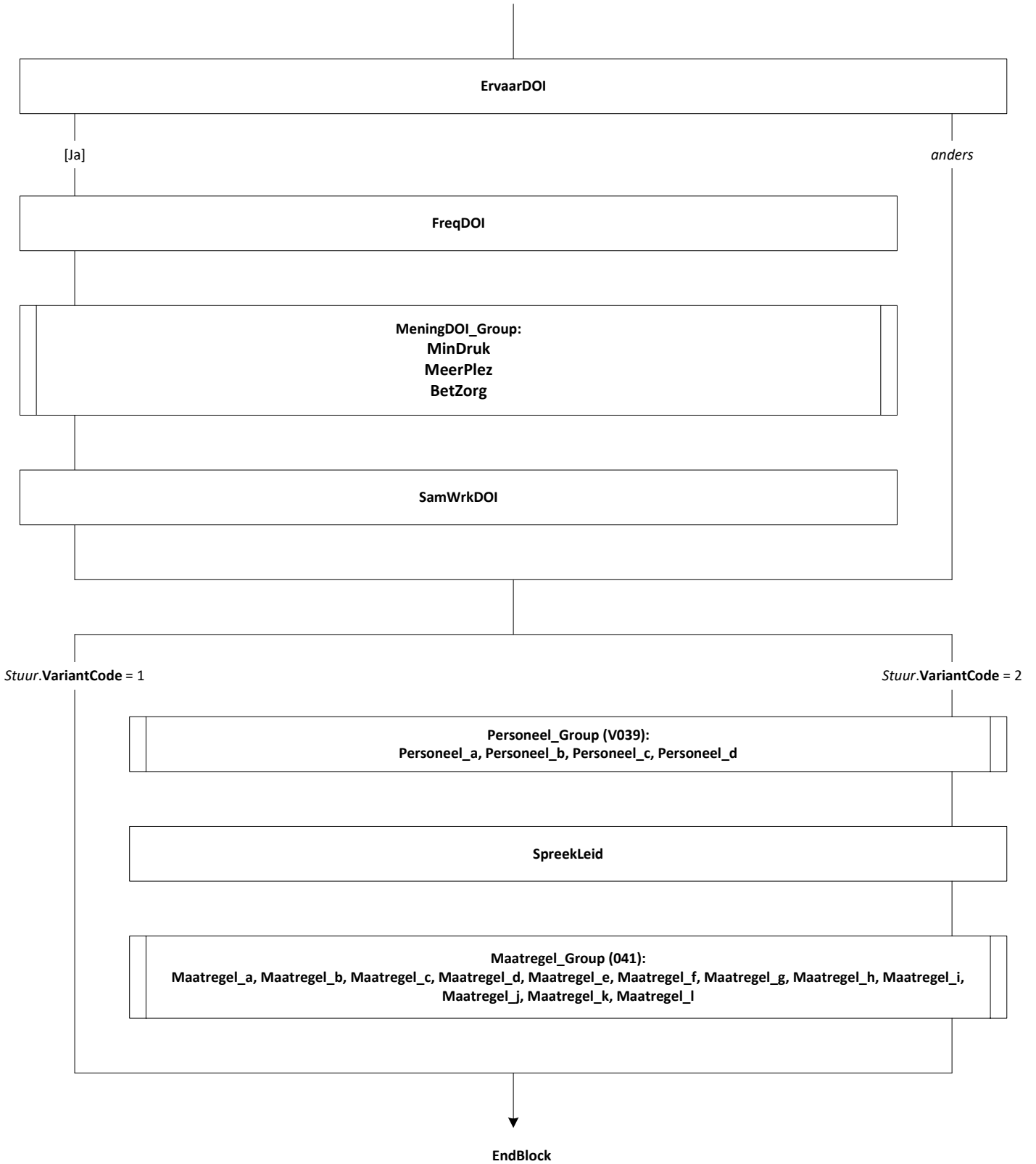
Technologie25 = 1 antwoord OF =
SA_GeenDeze

TechMeest

anders

Technologie25 = SA_GeenDeze

MeningTech_Group:
Efficient
VerbeterZorg
Plezier
Werkdruk
Bekwaam





KwalZrg, KwalZrg12



EndBlock

