



**Centraal Bureau  
voor de Statistiek**

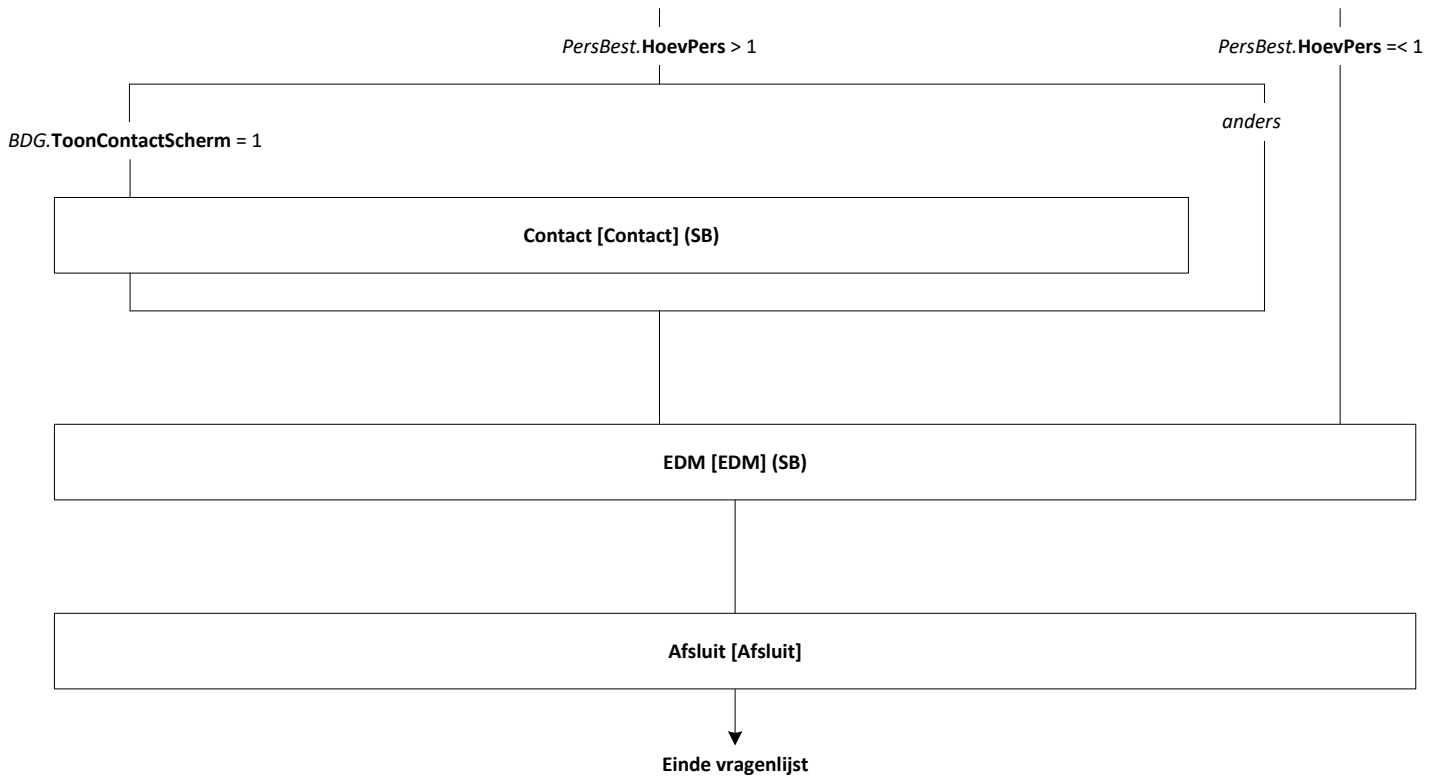
**AZW Werkgevers  
2025 November  
A-Peiling**

**Rachel Vis, Chantal Lurken**

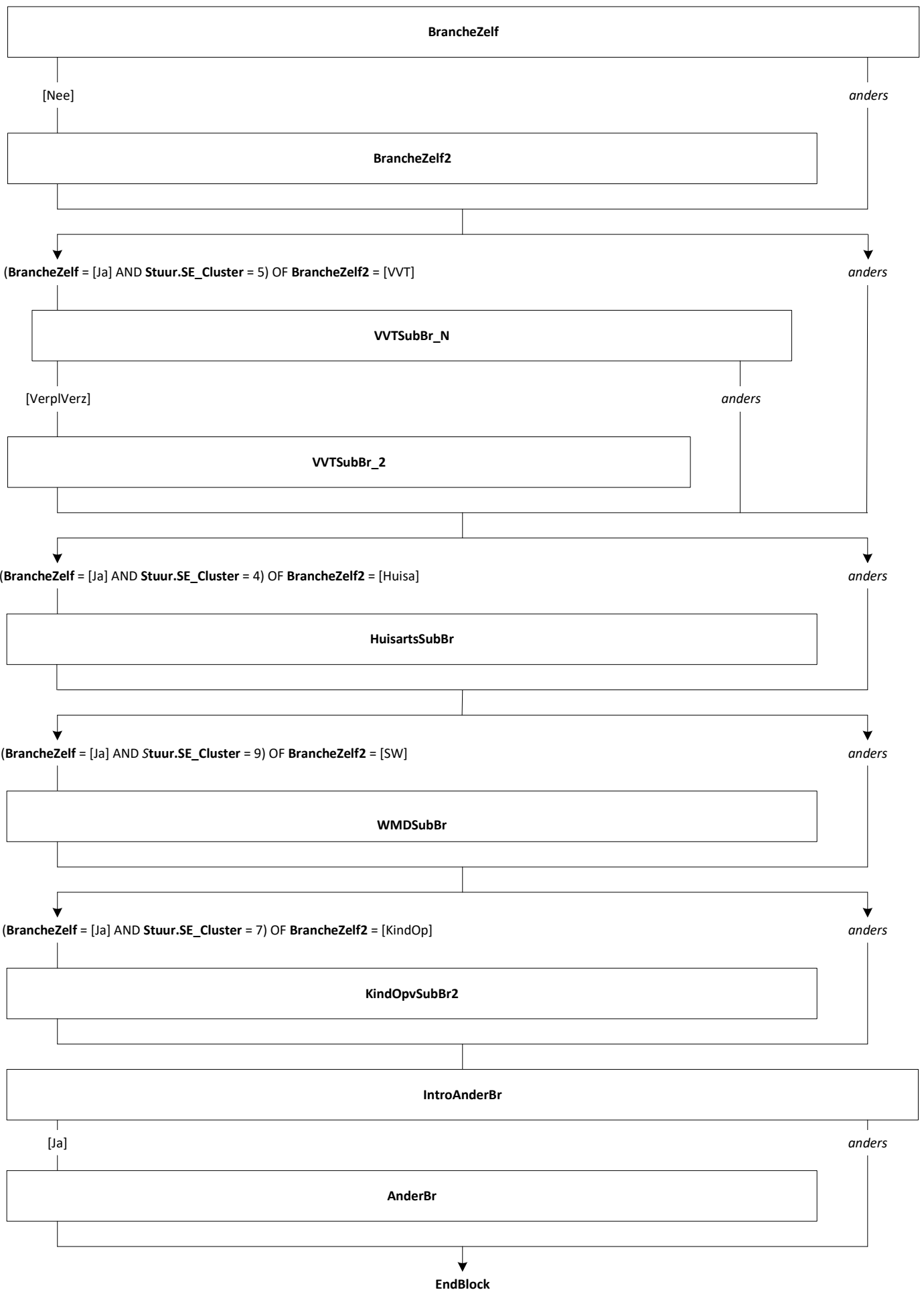
Versie: 1.2

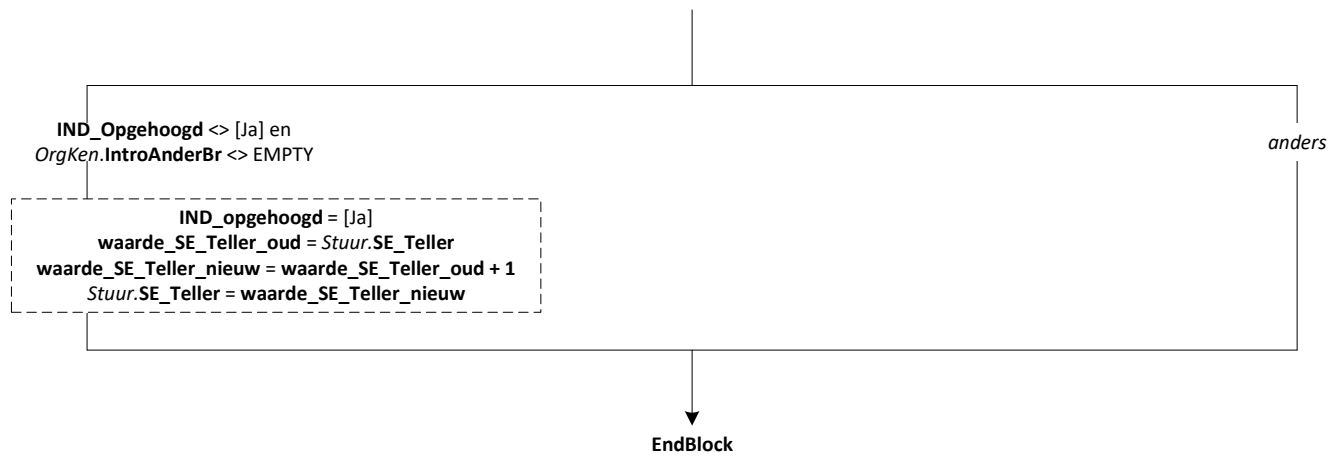
Datum: 22-8-2025

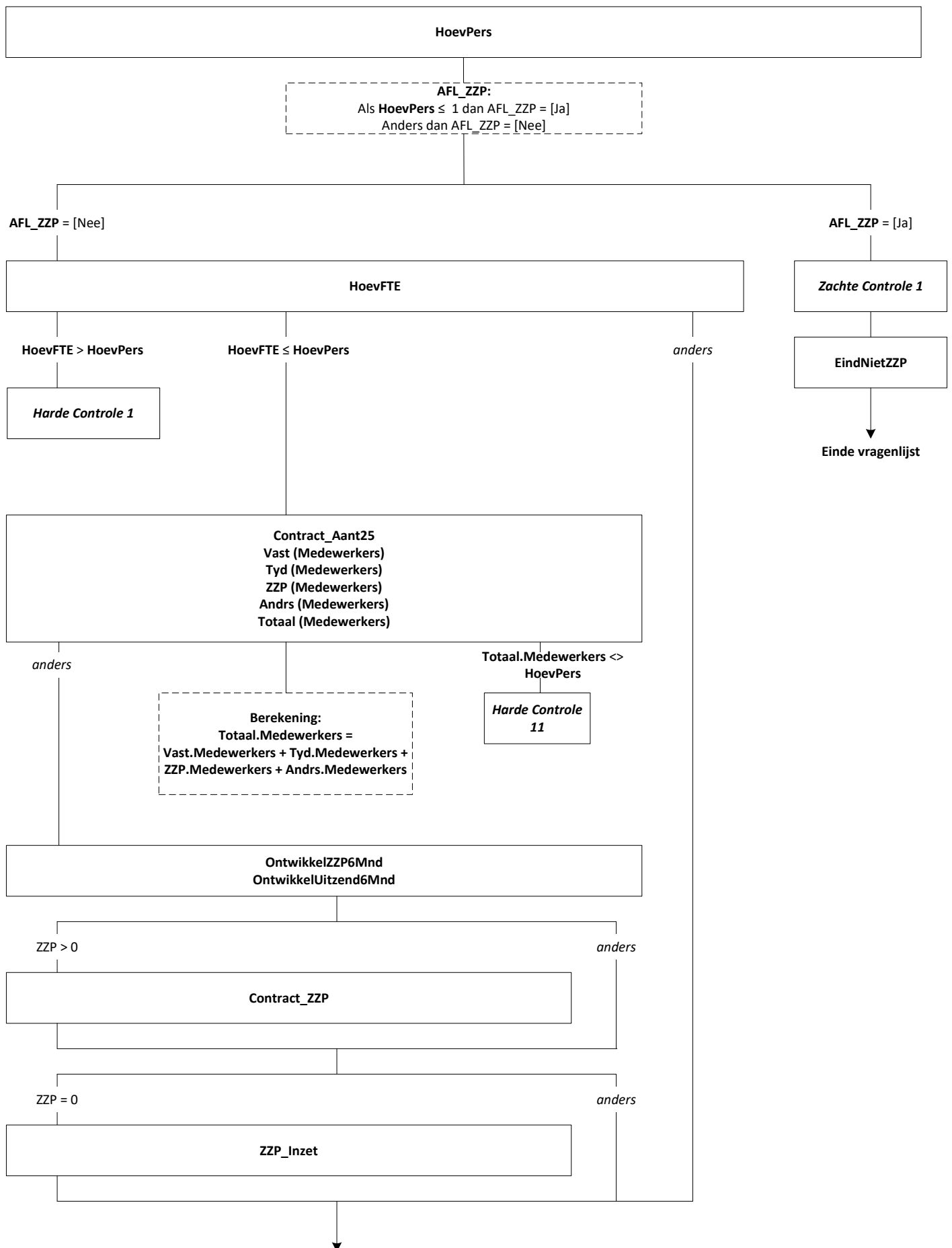


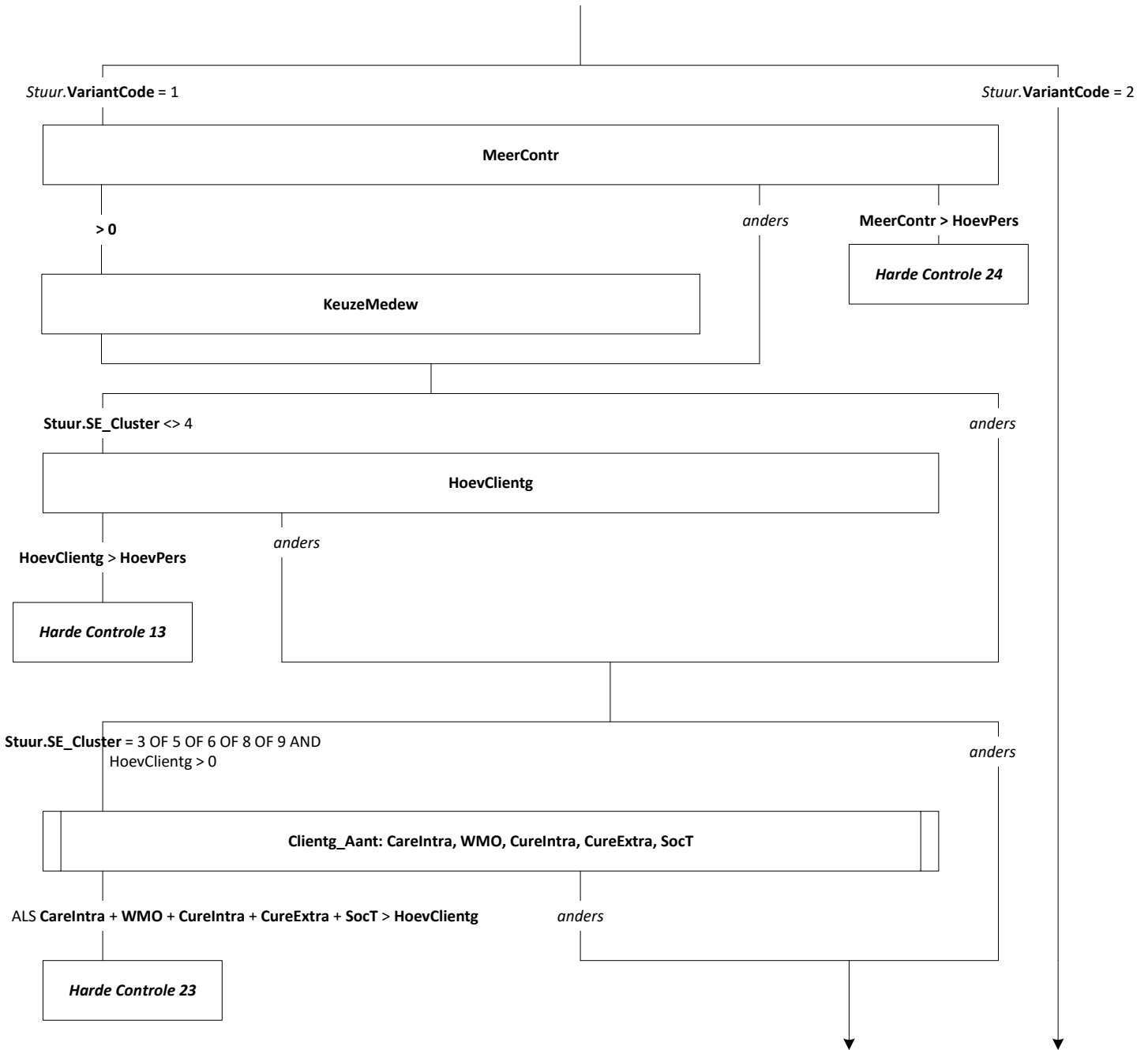












Stuur.VariantCode = 1

Stuur.VariantCode = 2

Stuur.SE\_Cluster = 1 OF 2

anders

UMC\_Ziek\_Func: UMC\_Ziek.Func.Regel[1] t/m UMC\_Ziek.Func.Regel[14]  
UMC\_Ziek.Func.Anders, UMC\_Ziek.Func.Totaal

anders

UMC\_Ziek\_Func <> HoefFTE

Harde Controle 14

UMC\_Ziek\_Contr\_tbl: ALS UMC\_Ziek\_Func1 > 0 dan UMC\_Contr\_a t/m ALS UMC\_Ziek\_Func14 > 0 dan UMC\_Contr\_n

anders

Aantal antwoorden in UMC\_Ziek\_Contr\_a t/m UMC\_Ziek\_Contr\_n  
> 2

Harde Controle 2

Stuur.SE\_Cluster = 3

anders

GGZ\_Func: GGZ.Func.Regel[1] t/m GGZ.Func.Regel[10]  
GGZ.Func.Anders, GGZ.Func.Totaal

anders

GGZ\_Func <>  
HoefFTE

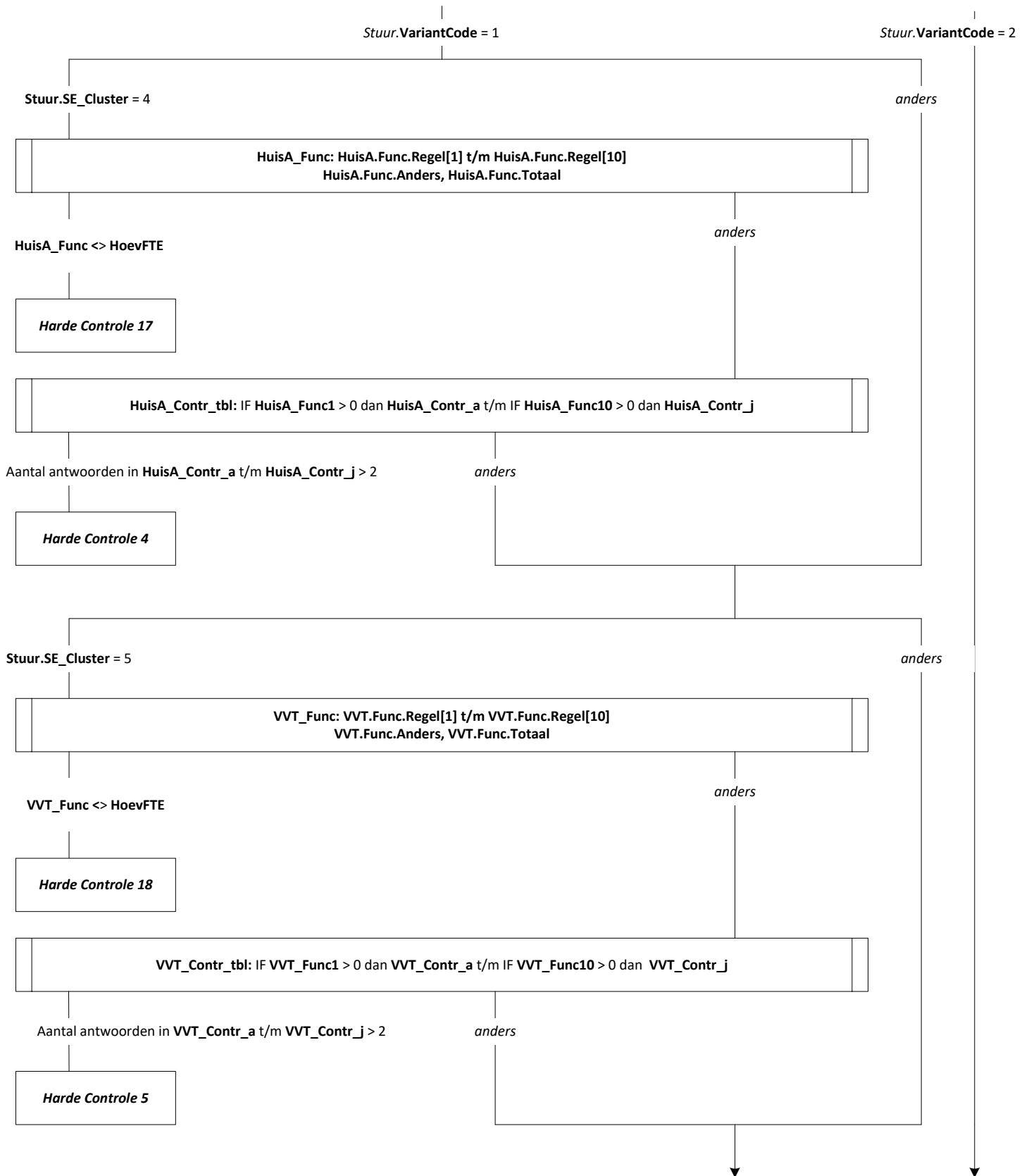
Harde Controle 16

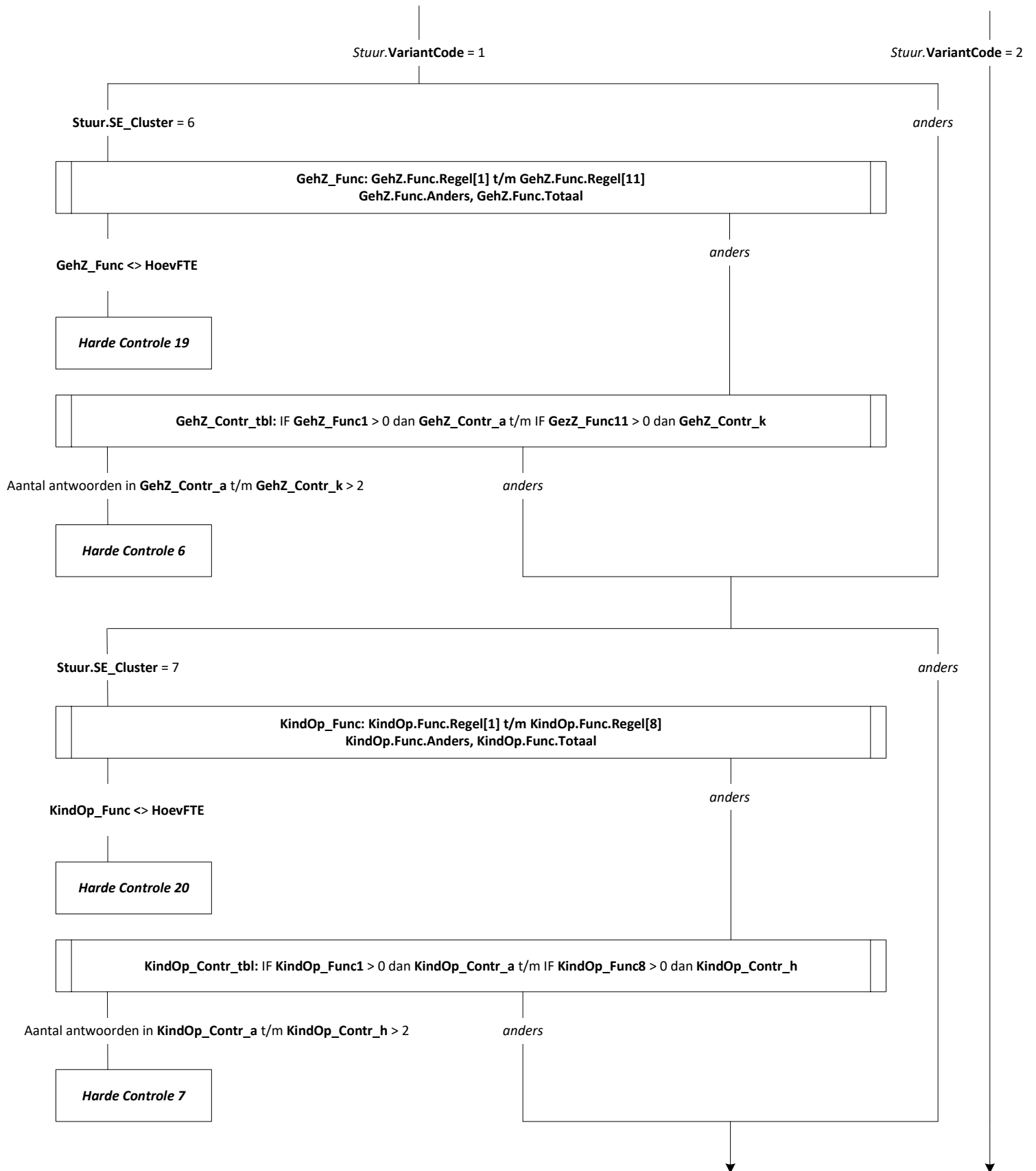
GGZ\_Contr\_tbl: ALS GGZ\_Func1 > 0 dan GGZ\_Contr\_a t/m ALS GGZ\_Func10 > 0 dan GGZ\_Contr\_j

anders

Aantal antwoorden in GGZ\_Contr\_a t/m GGZ\_Contr\_j > 2

Harde Controle 3





Stuur.VariantCode = 1

Stuur.VariantCode = 2

Stuur.SE\_Cluster = 8

anders

JeugdZ\_Func: JeugdZ.Func.Regel[1] t/m JeugdZ.Func.Regel[10]  
JeugdZ.Func.Anders, JeugdZ.Func.Totaal

anders

JeugdZ\_Func <> HoevFTE

Harde Controle 21

JeugdZ\_Contr\_tbl: IF JeugdZ\_Func1 > 0 dan JeugdZ\_Contr\_a t/m IF JeugdZ\_Func10 > 0 dan JeugdZ\_Contr\_j

Aantal antwoorden in JeugdZ\_Contr\_a t/m JeugdZ\_Contr\_j > 2

anders

Harde Controle 8

Stuur.SE\_Cluster = 9

anders

SW\_Func: SW.Func.Regel[1] t/m SW.Func.Regel[10]  
SW.Func.Anders, SW.Func.Totaal

anders

SW\_Func <> HoevFTE

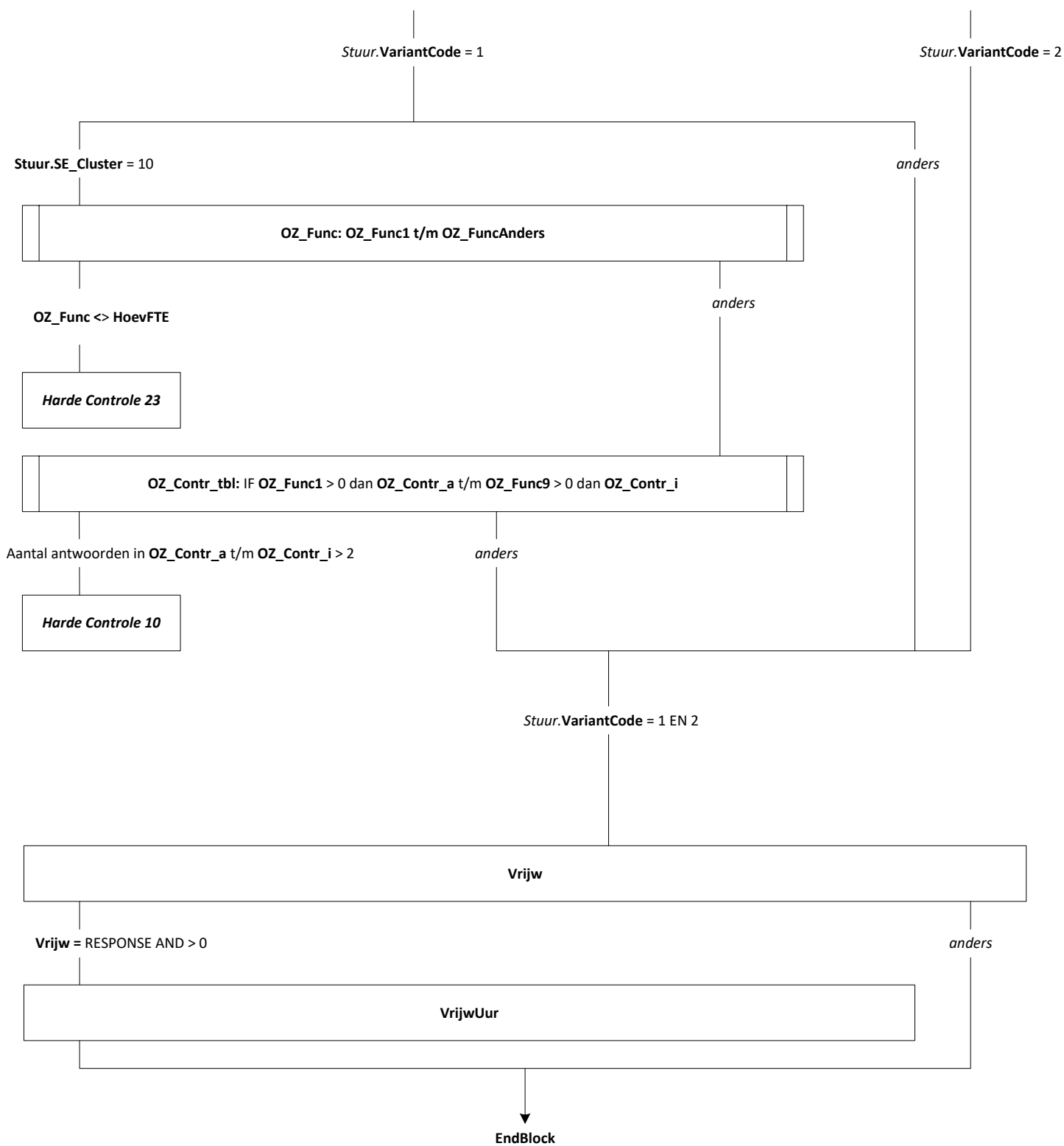
Harde Controle 22

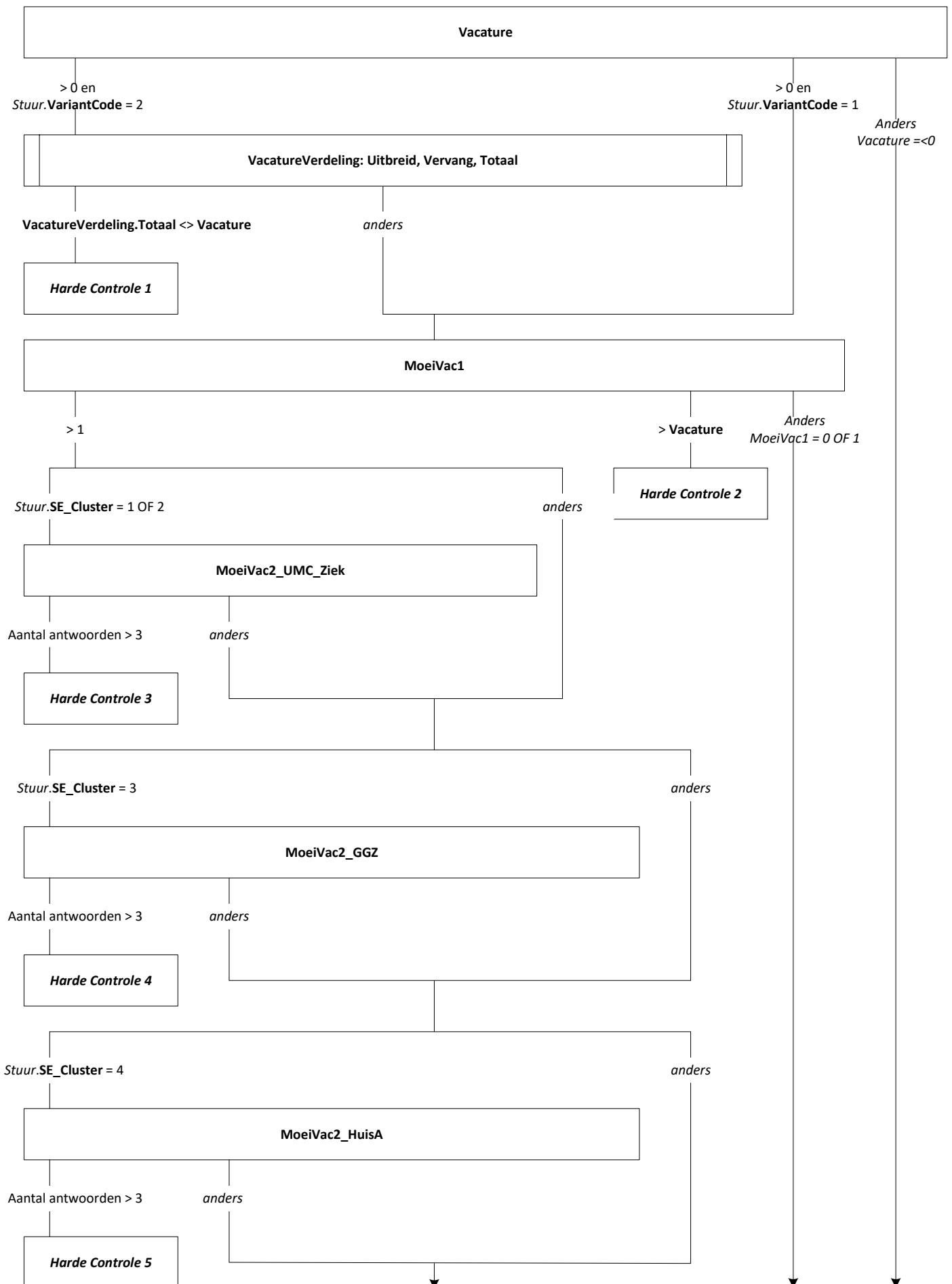
SW\_Contr\_tbl: IF SW\_Func1 > 0 dan SW\_Contr\_a t/m IF SW\_Func10 > 0 dan SW\_Contr\_j

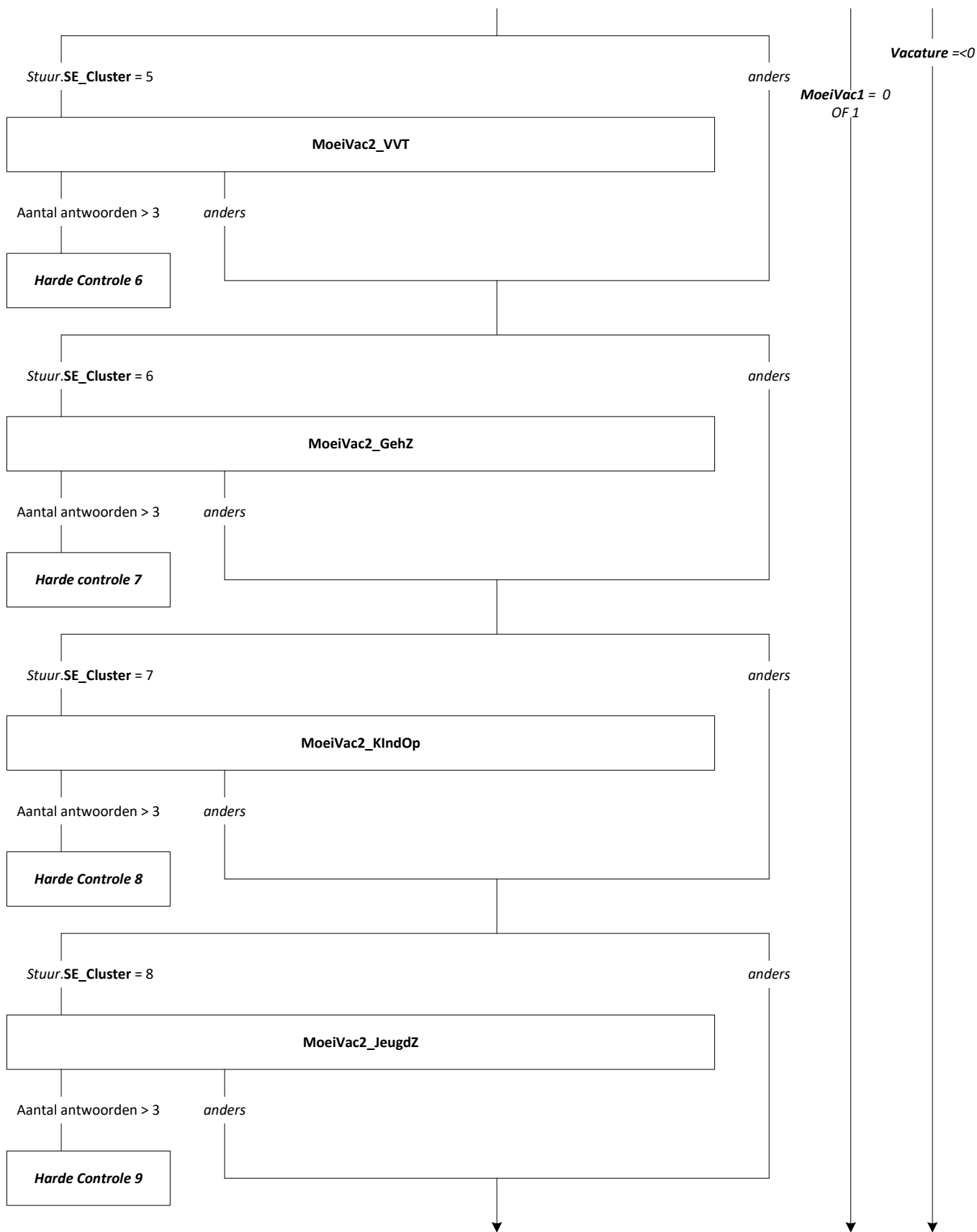
Aantal antwoorden in SW\_Contr\_a t/m SW\_Contr\_j > 2

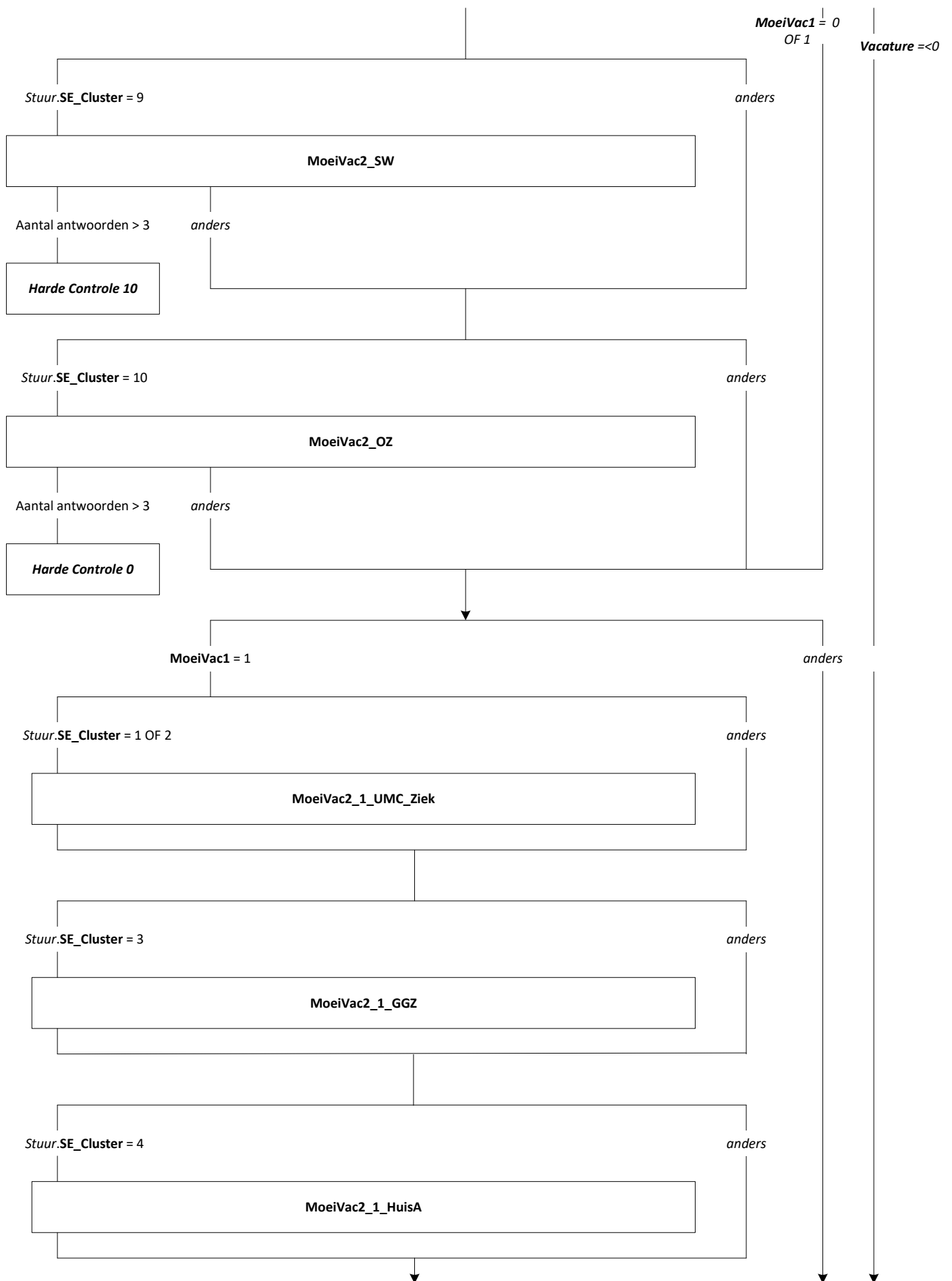
anders

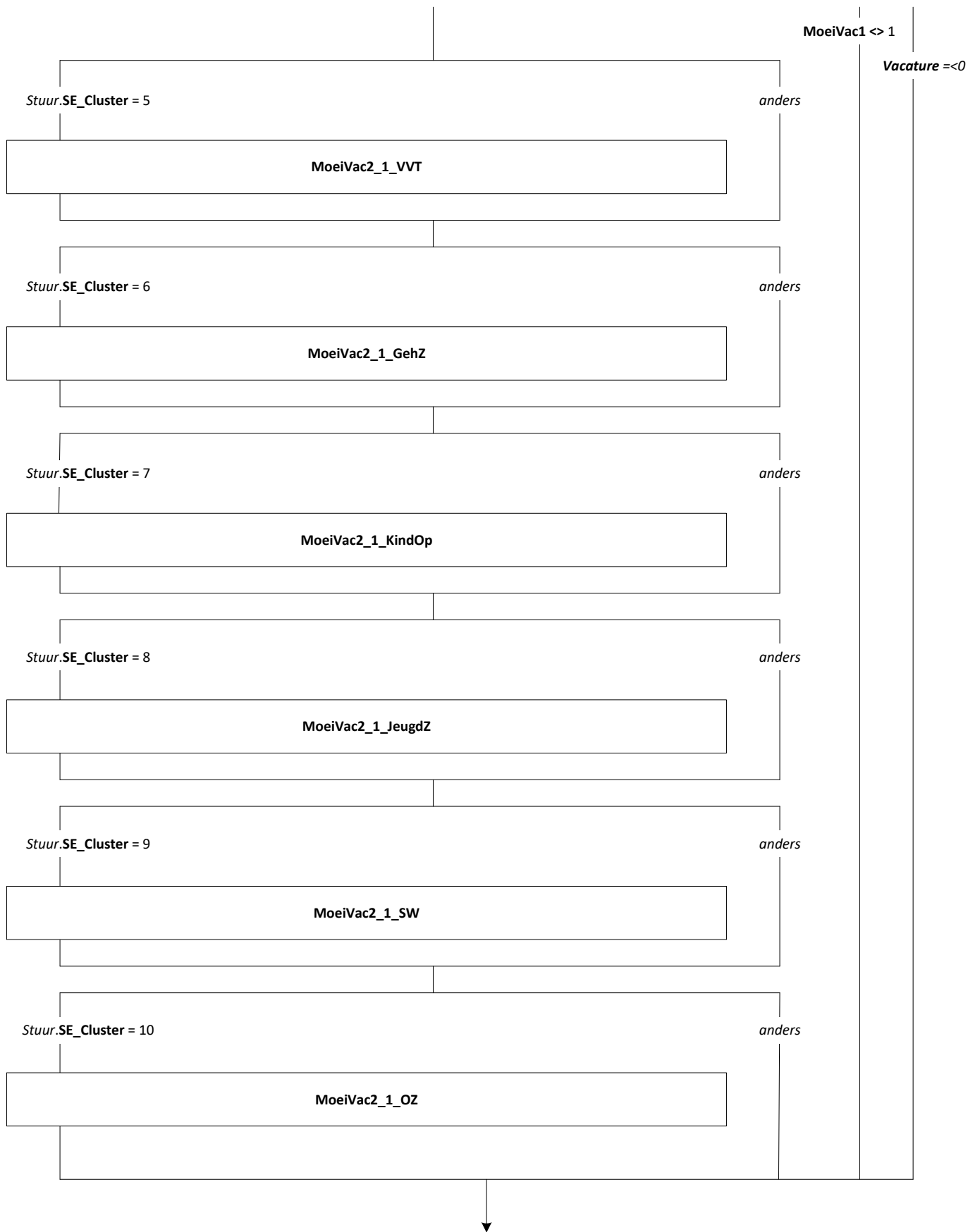
Harde Controle 9

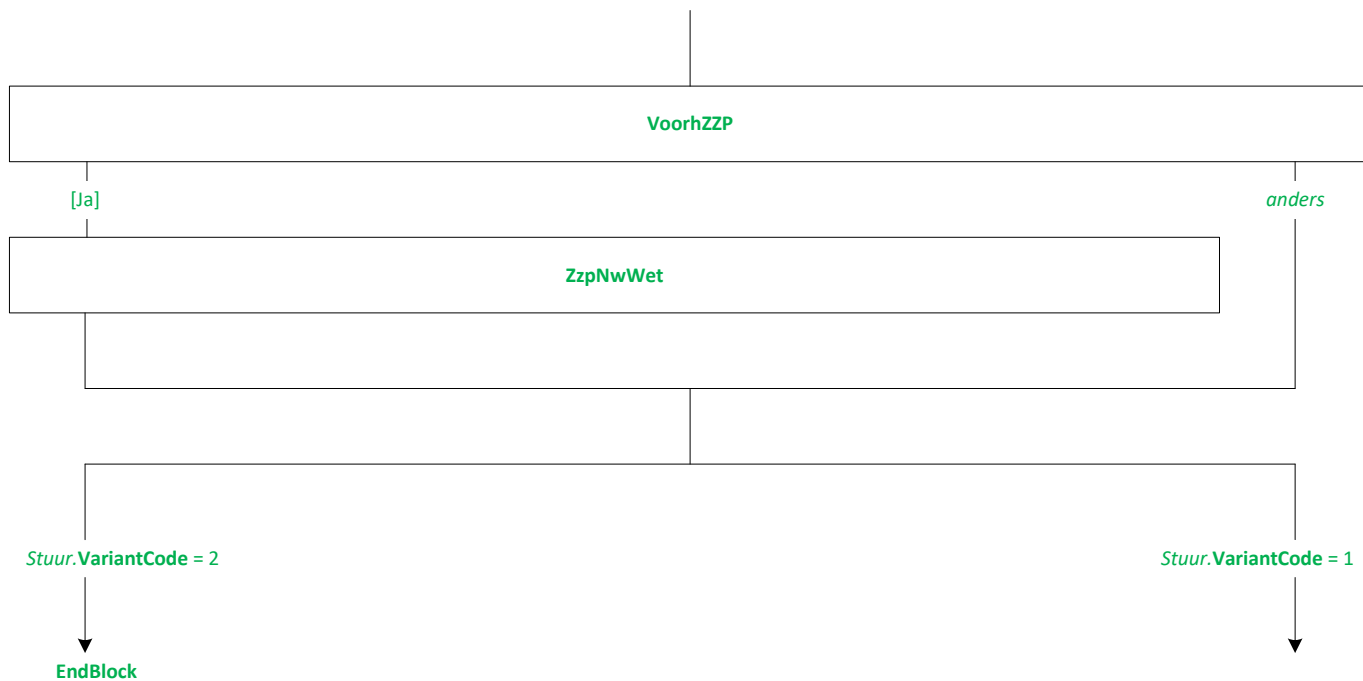


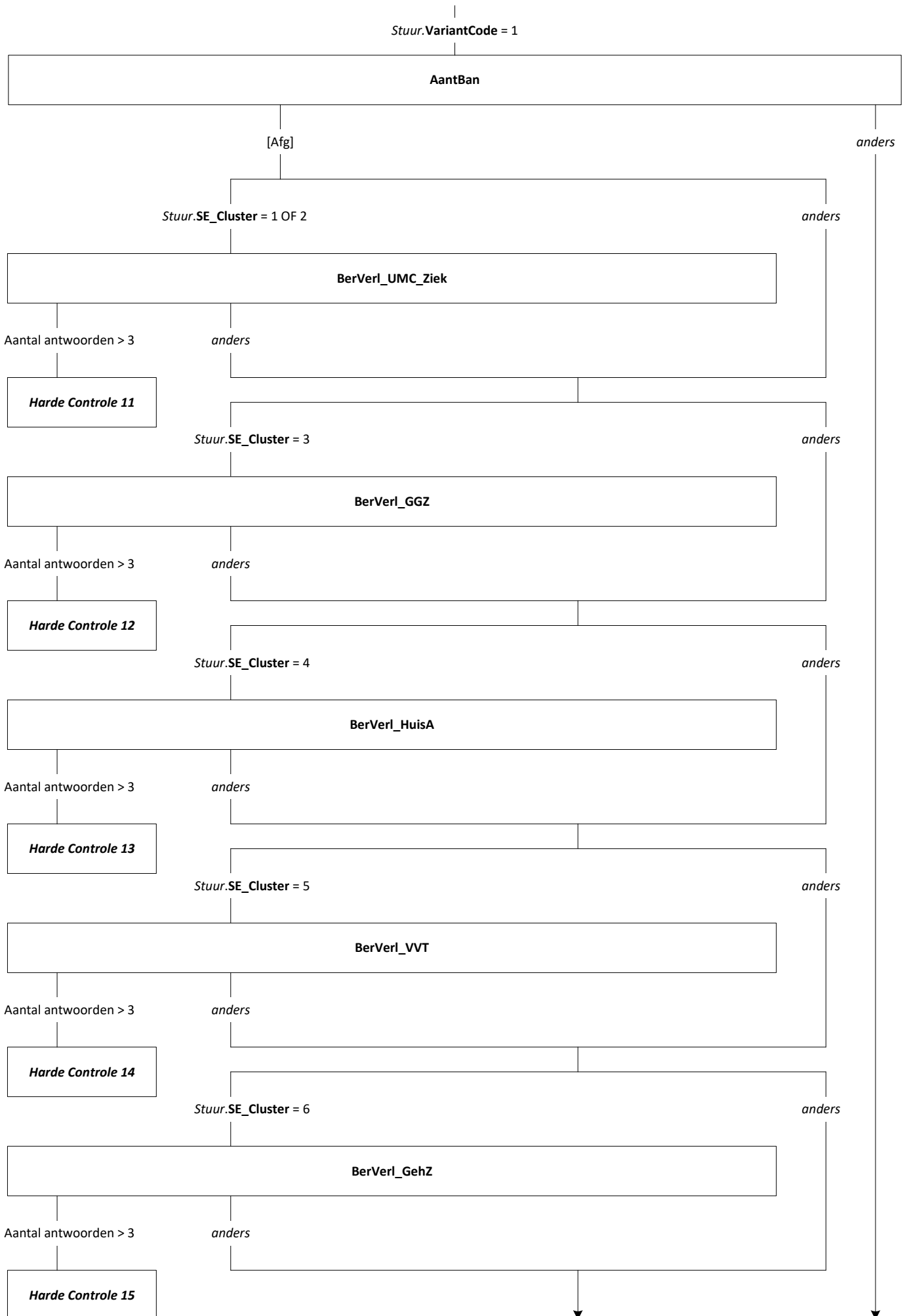


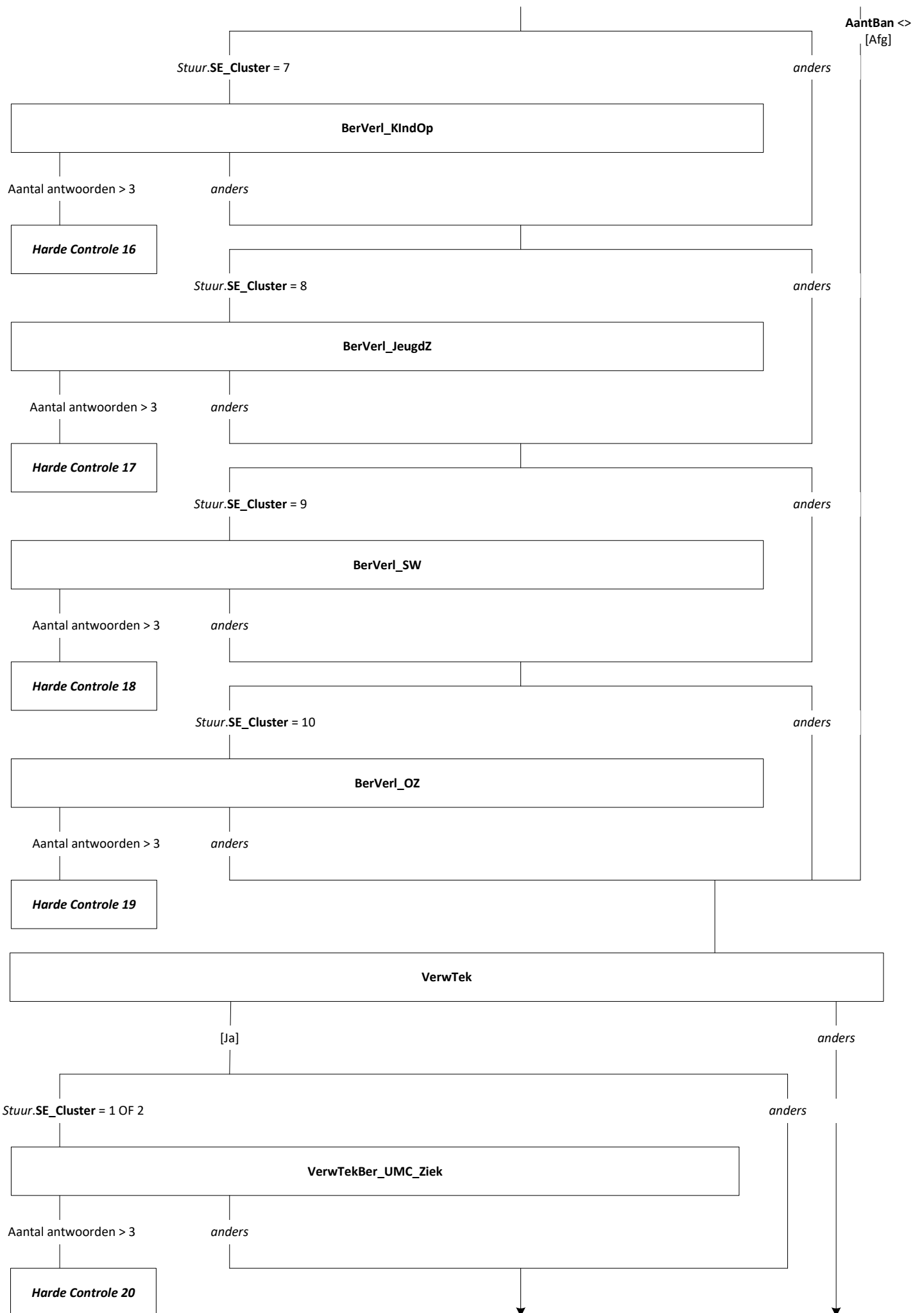


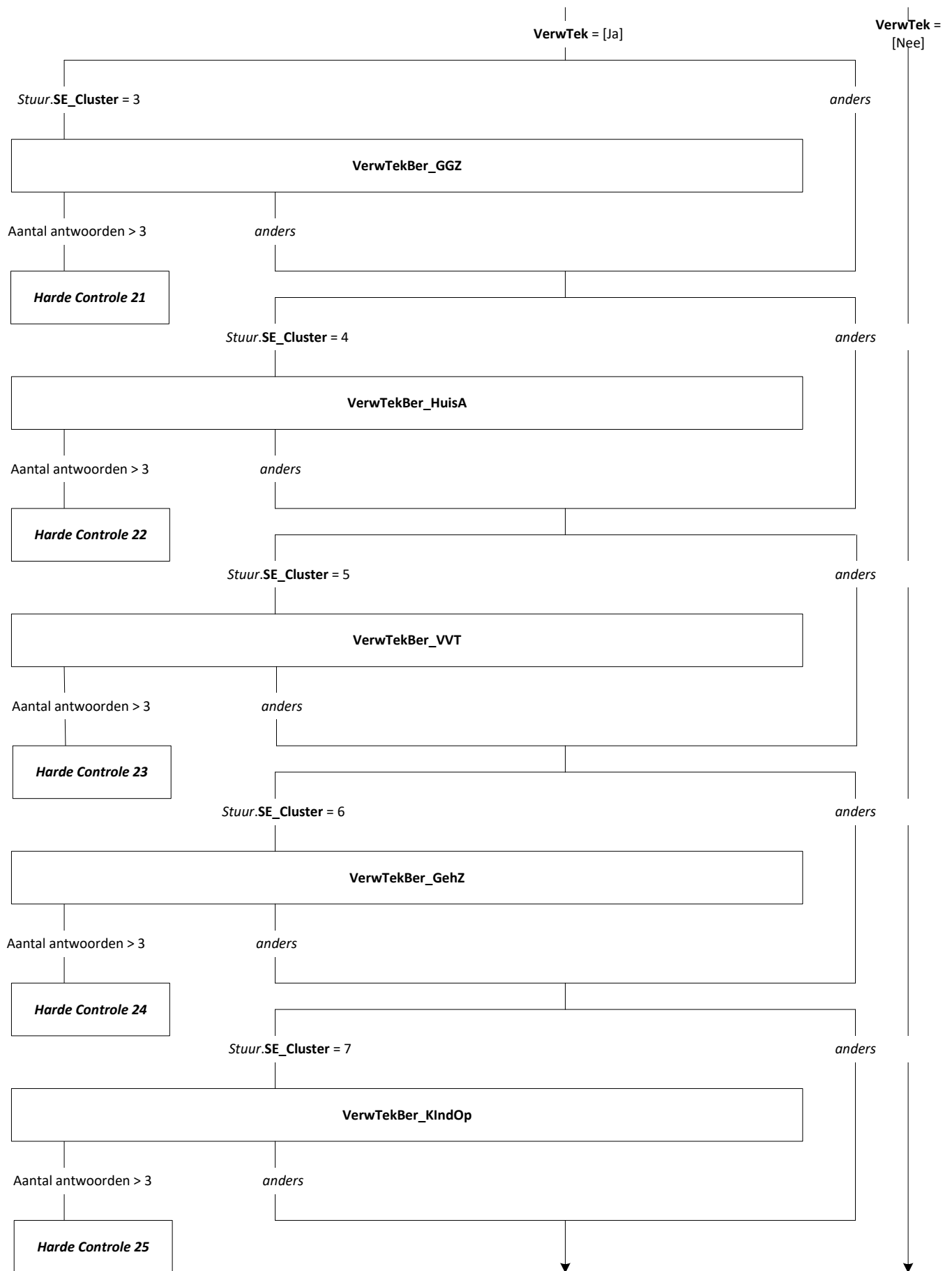


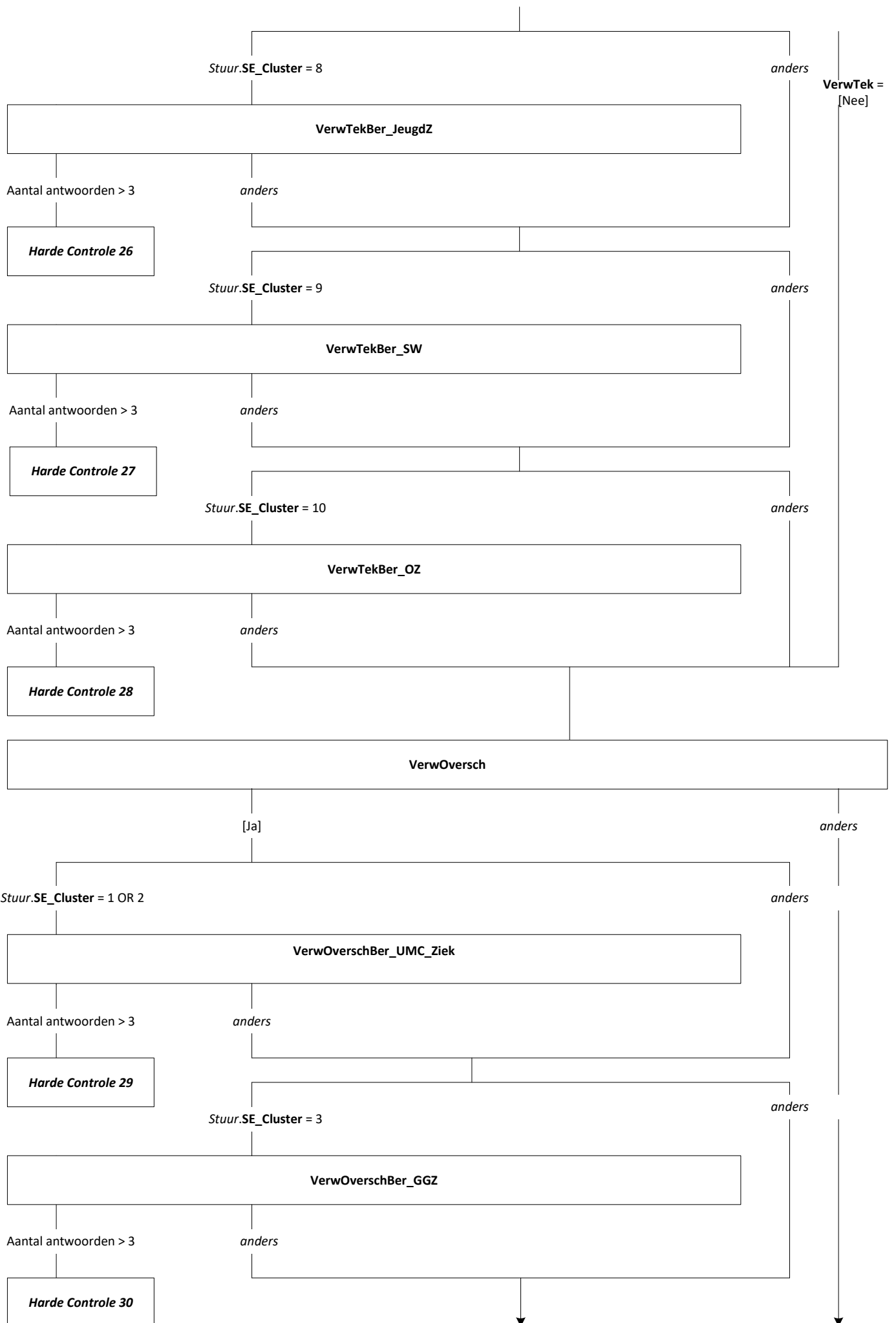


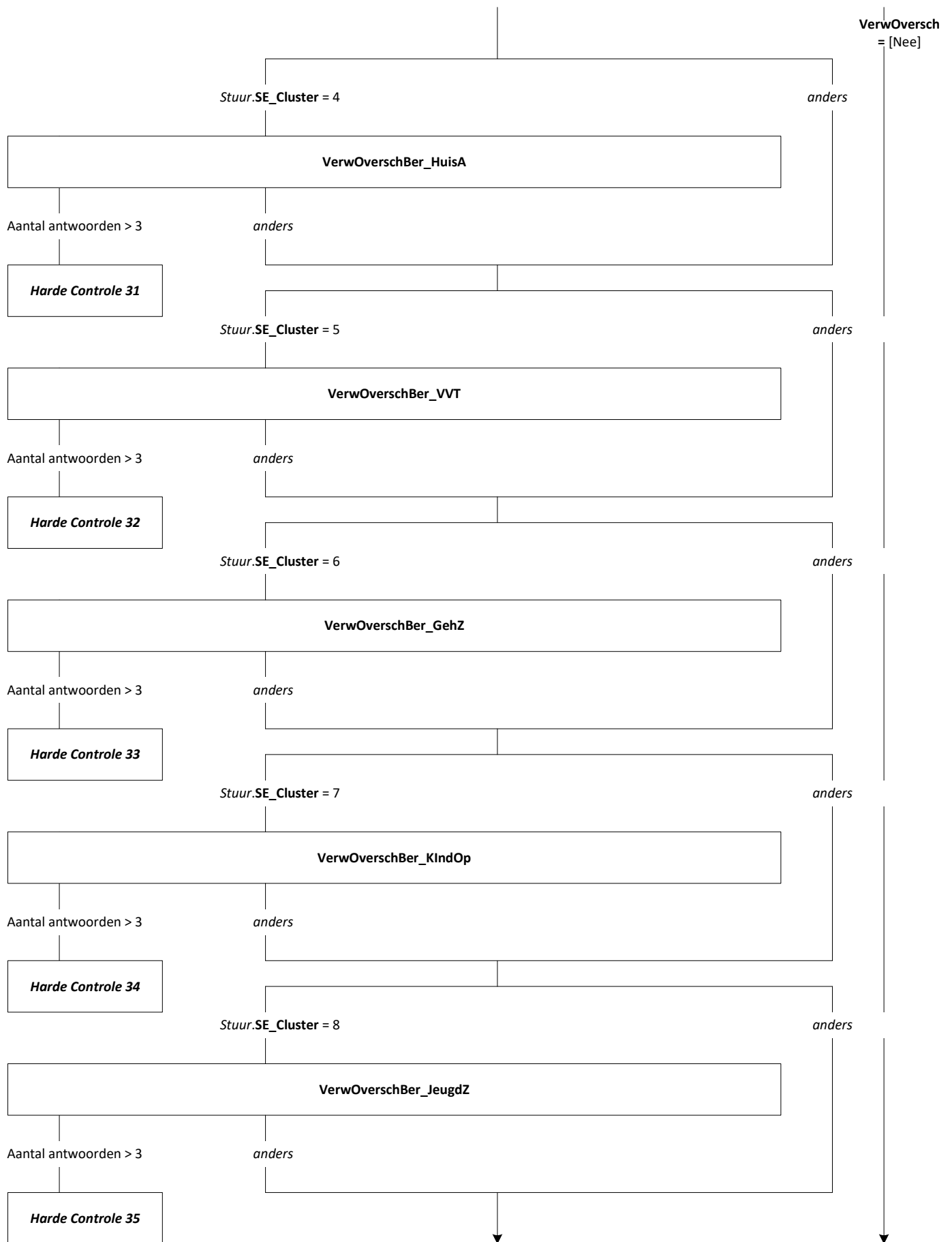


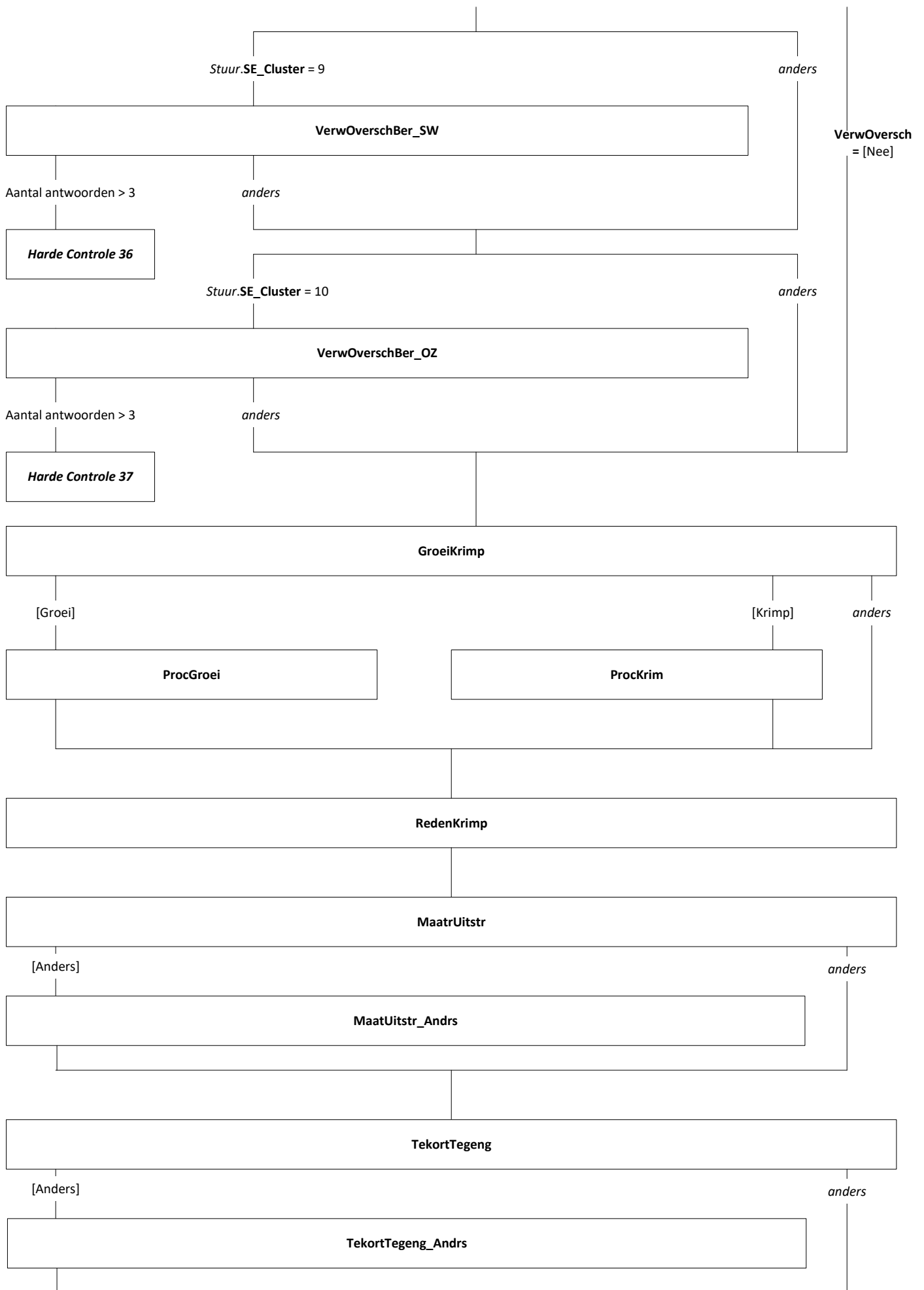


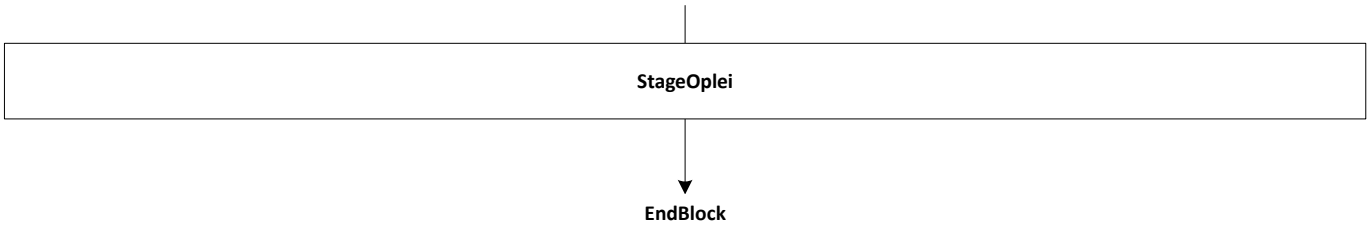


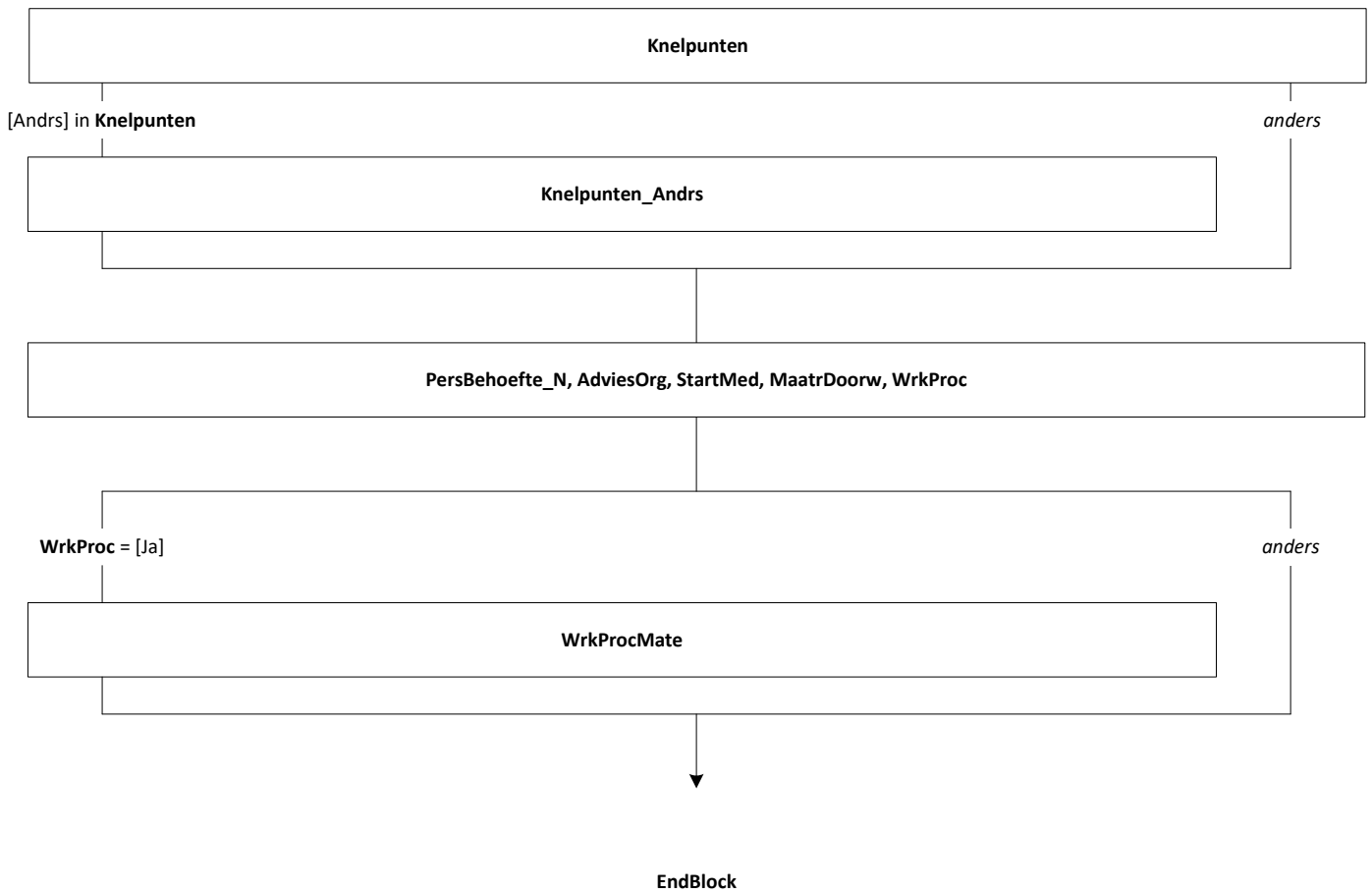


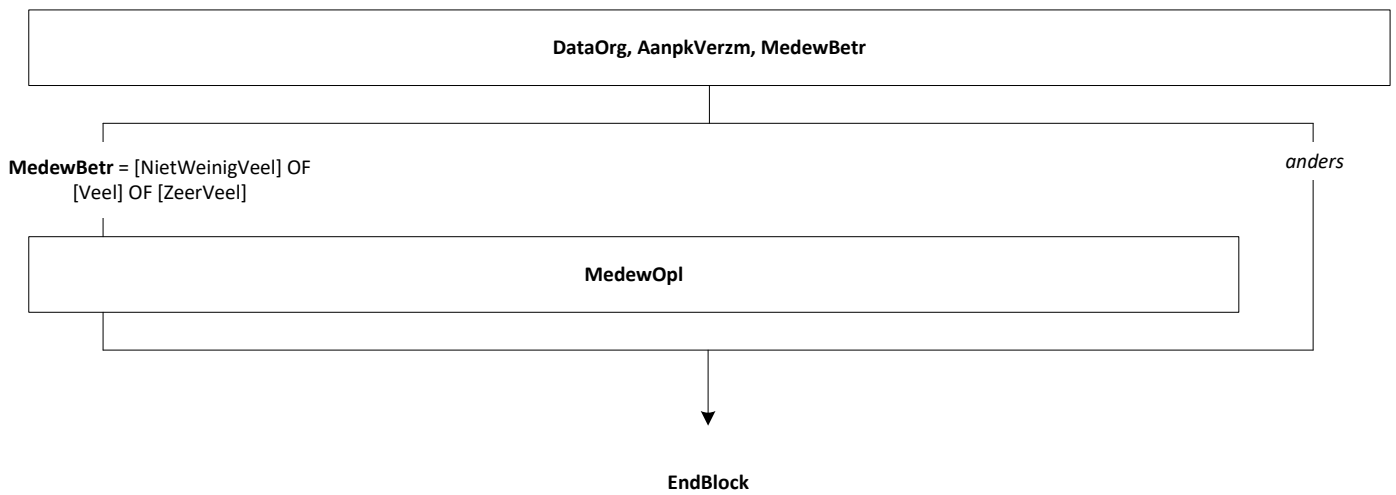


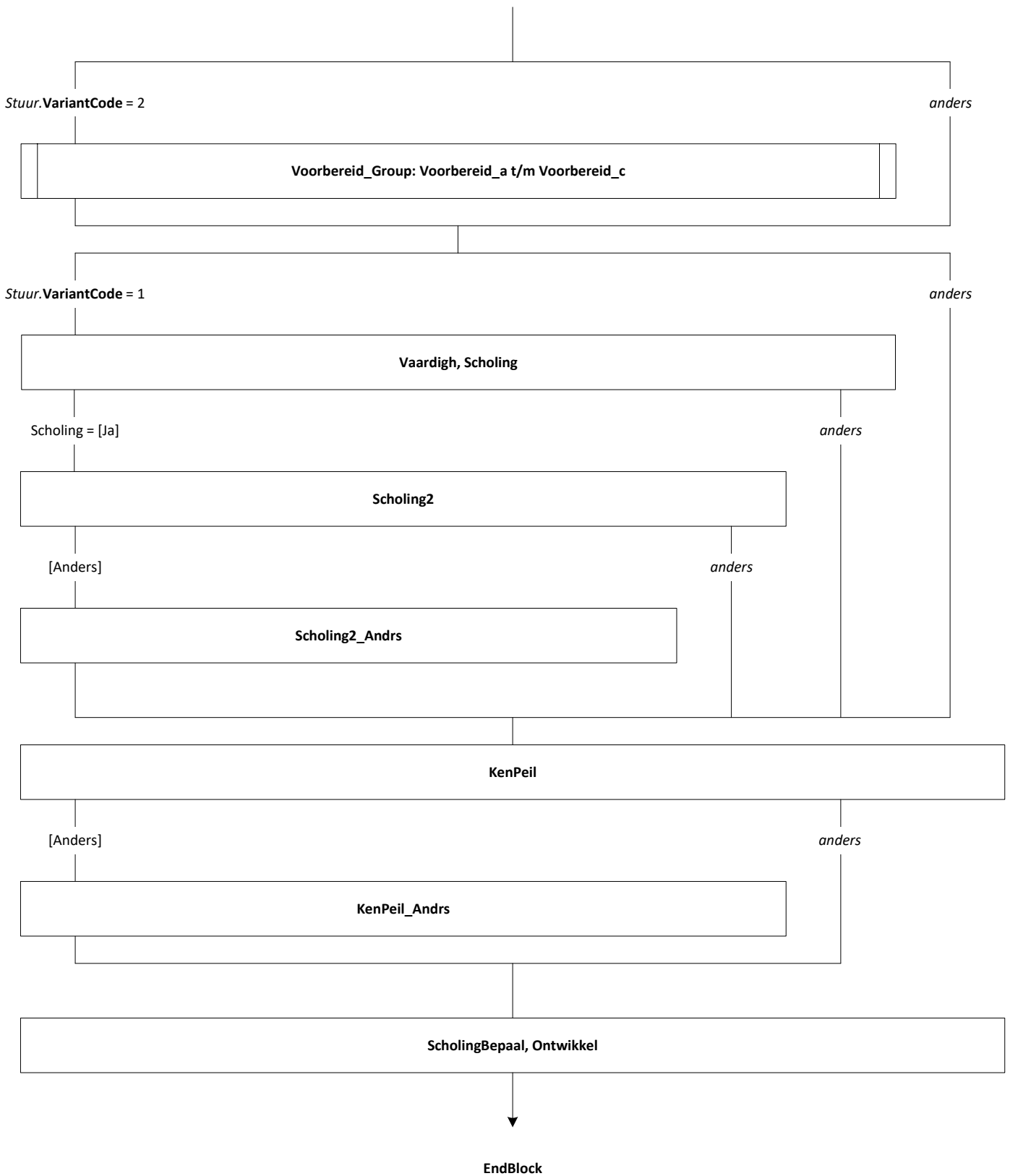














**Funcctie\_Zelfzorg** = [NietWeinigVeel]/[Veel]/[ZeerVeel]

*anders*

**EffectZelfzorg\_Group:**  
EffectZelfzorg\_WrkPlezier  
EffectZelfzorg\_Wrkdruk  
EffectZelfzorg\_Inzet  
EffectZelfzorg\_Perspect  
EffectZelfzorg\_Doelgroep

**Funcctie\_Her** = [NietWeinigVeel]/[Veel]/[ZeerVeel]

*anders*

**EffectTaak\_Group:**  
EffectTaak\_WrkPlezier  
EffectTaak\_Wrkdruk  
EffectTaak\_Inzet  
EffectTaak\_Perspect  
EffectTaak\_Doelgroep

**Funcctie\_Mantelzorg** = [NietWeinigVeel]/[Veel]/[ZeerVeel]

*anders*

**EffectMantelzorg\_Group:**  
EffectMantelzorg\_WrkPlezier  
EffectMantelzorg\_Wrkdruk  
EffectMantelzorg\_Inzet  
EffectMantelzorg\_Perspect  
EffectMantelzorg\_Doelgroep

**Funcctie\_Diff** = [NietWeinigVeel]/[Veel]/[ZeerVeel]

*anders*

**EffectDiff\_Group:**  
EffectDiff\_WrkPlezier  
EffectDiff\_Wrkdruk  
EffectDiff\_Inzet  
EffectDiff\_Perspect  
EffectDiff\_Doelgroep

**Funcctie\_Carving** = [NietWeinigVeel]/[Veel]/[ZeerVeel]

*anders*

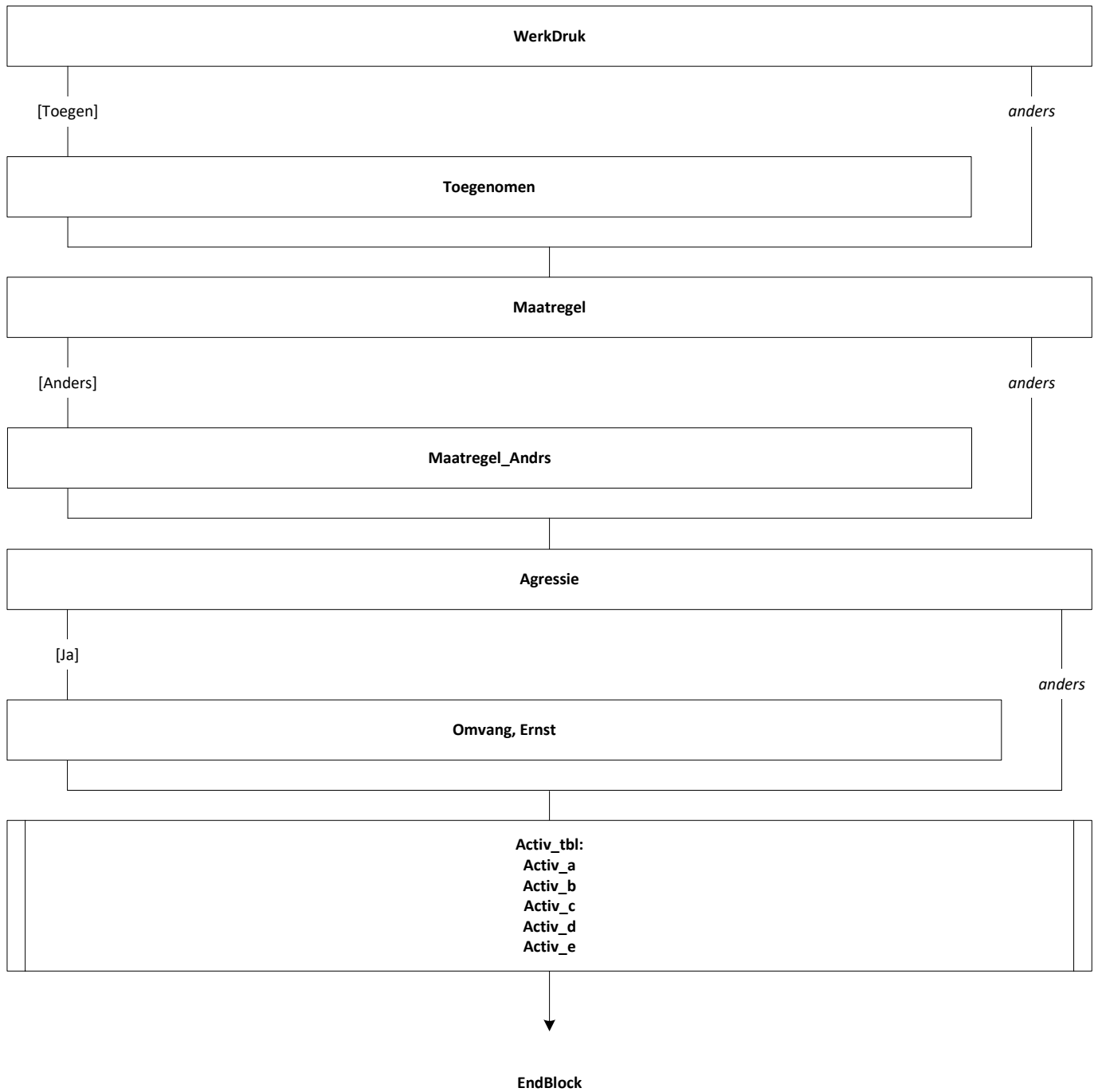
**EffectJobCarving\_Group:**  
EffectJobCarving\_WrkPlezier  
EffectJobCarving\_Wrkdruk  
EffectJobCarving\_Inzet  
EffectJobCarving\_Perspect  
EffectJobCarving\_Doelgroep

**Funcctie\_Inno** = [NietWeinigVeel]/[Veel]/[ZeerVeel]

*anders*

**EffectInno\_Group:**  
EffectInno\_WrkPlezier  
EffectInno\_Wrkdruk  
EffectInno\_Inzet  
EffectInno\_Perspect  
EffectInno\_Doelgroep

EndBlock





KwalZrg, KwalZrg12



EndBlock





