



Centraal Bureau
voor de Statistiek

NEA - 2023

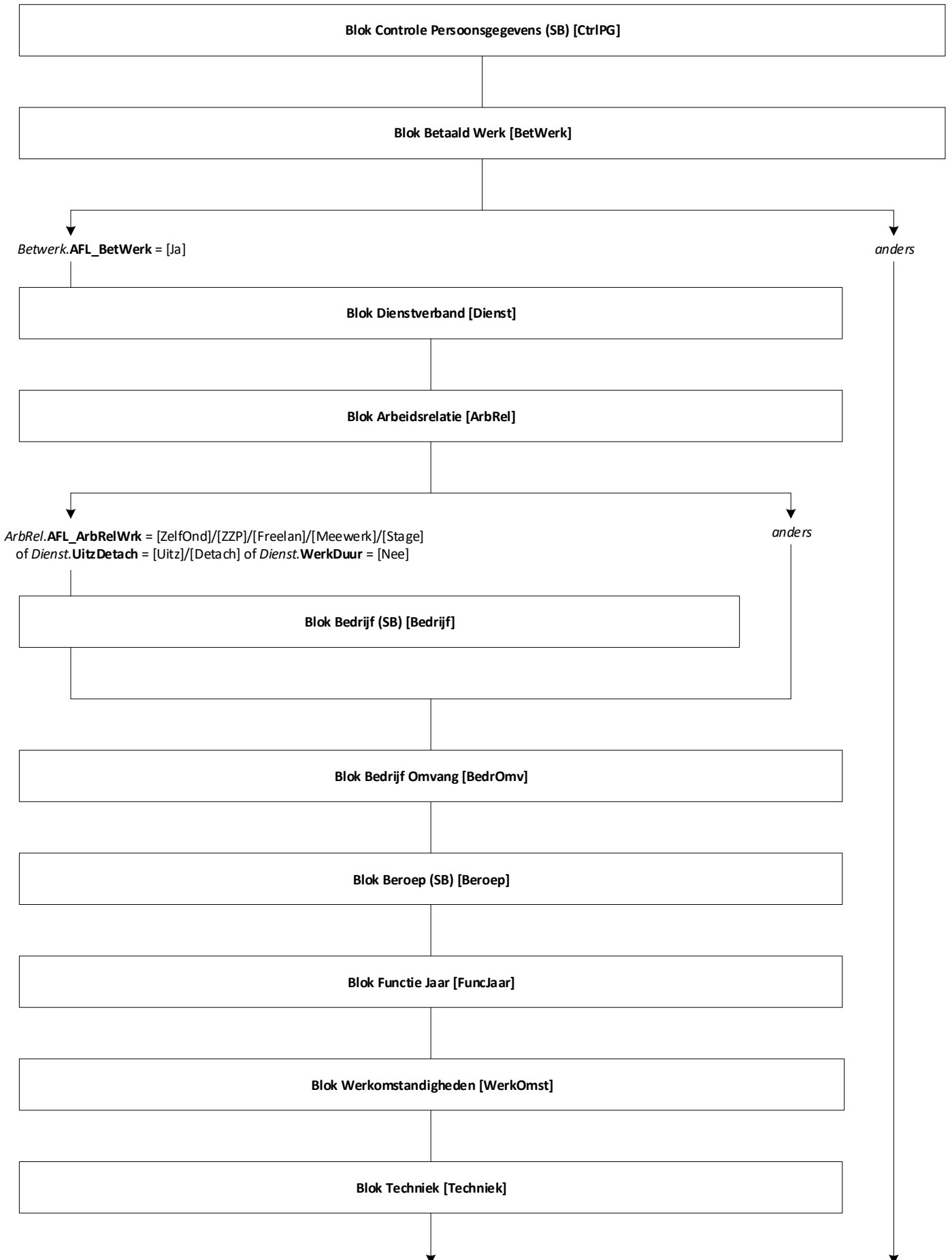
Madelon Cremers & Loes Muijsers

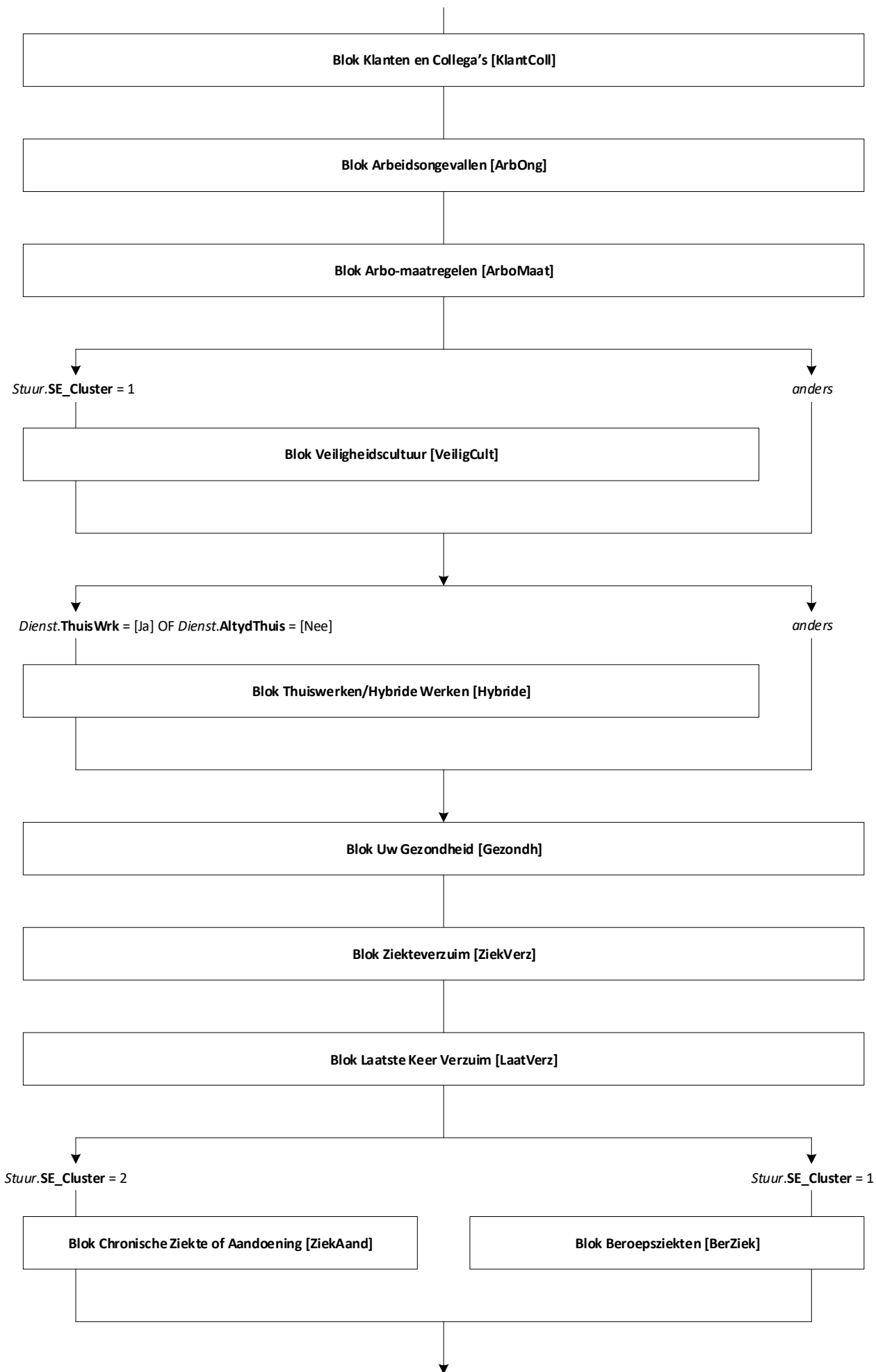
Versie: 2.1

Datum: 28-7-2023

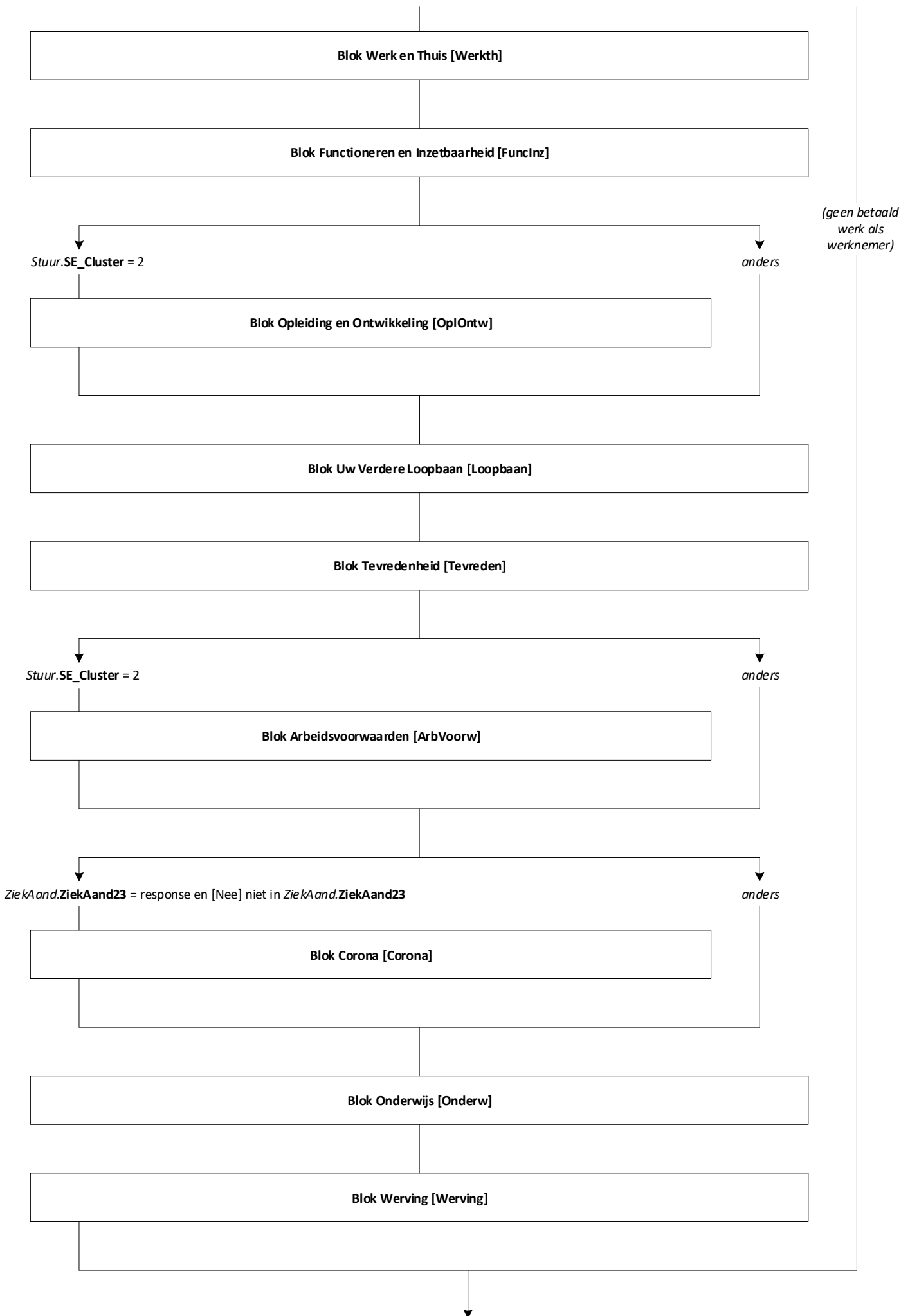


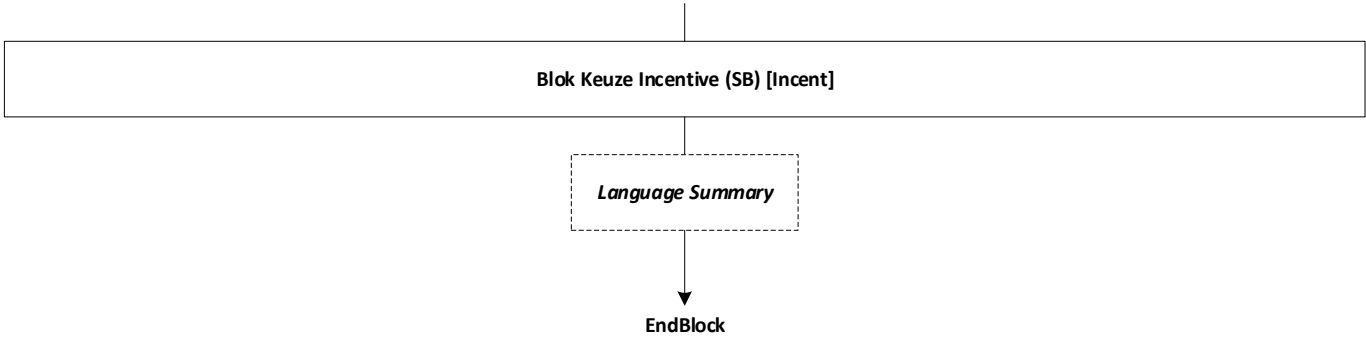
Blokkenschema



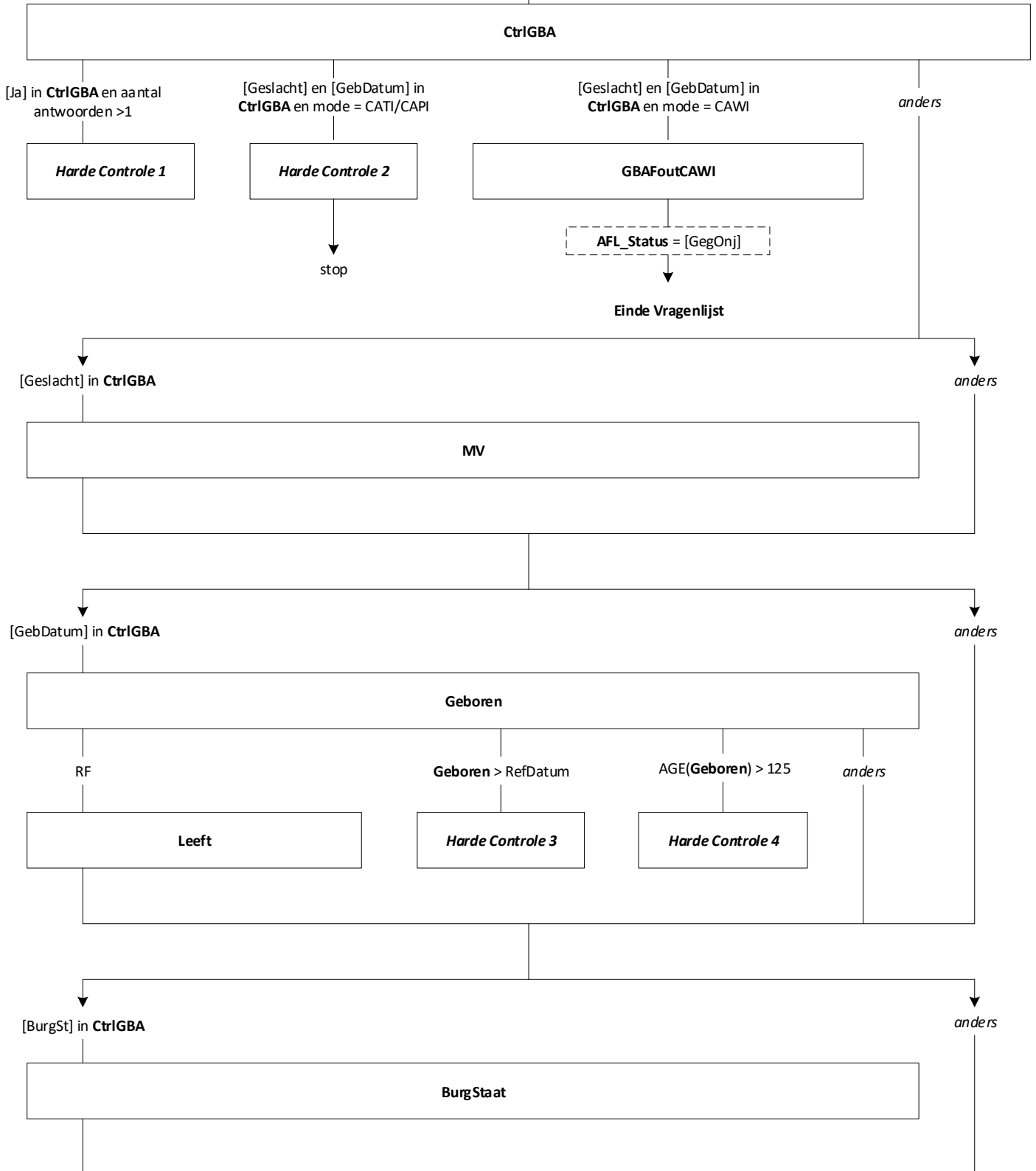


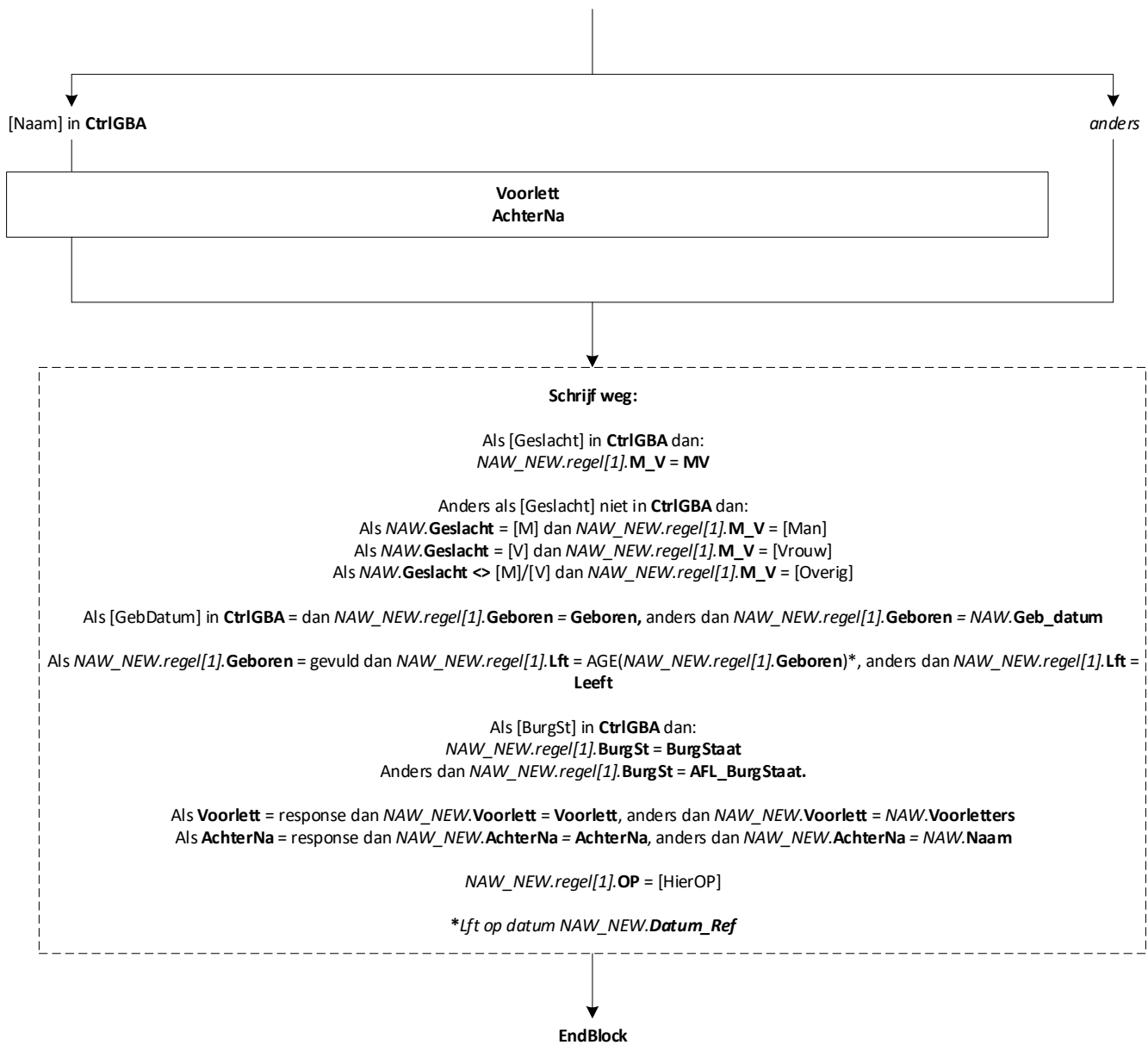
(geen betaald
werk als
werknemer)

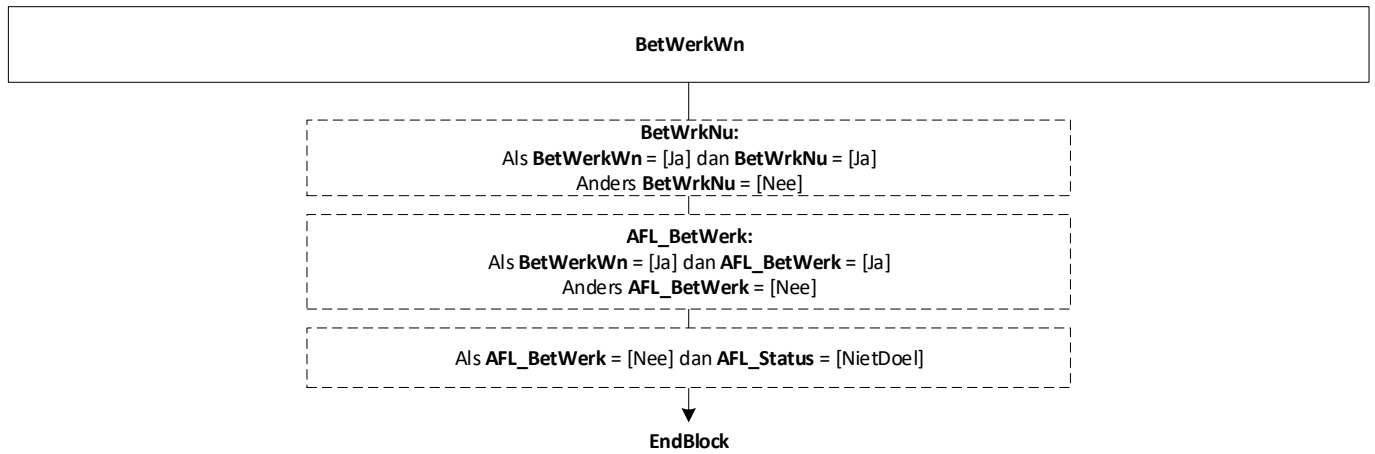


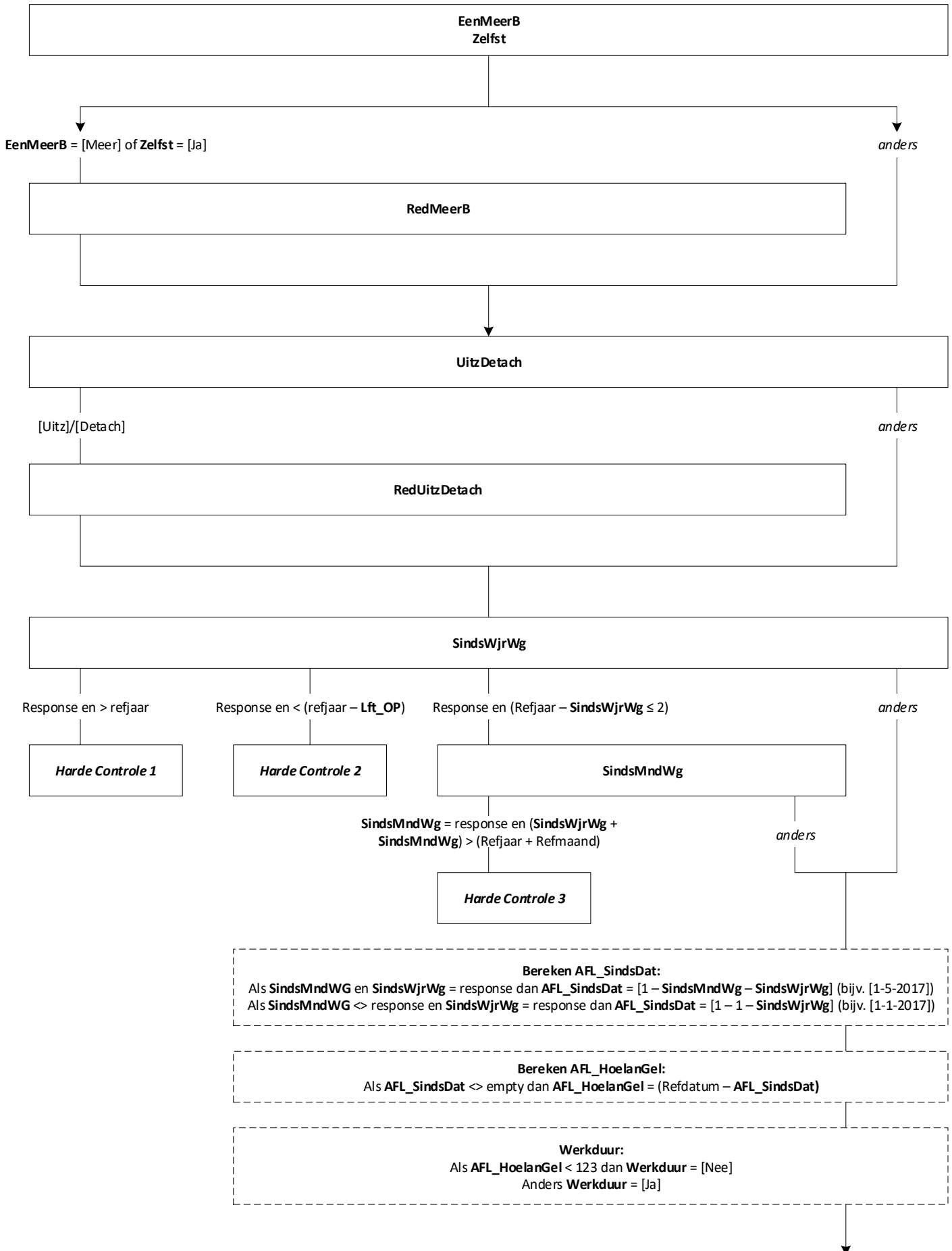


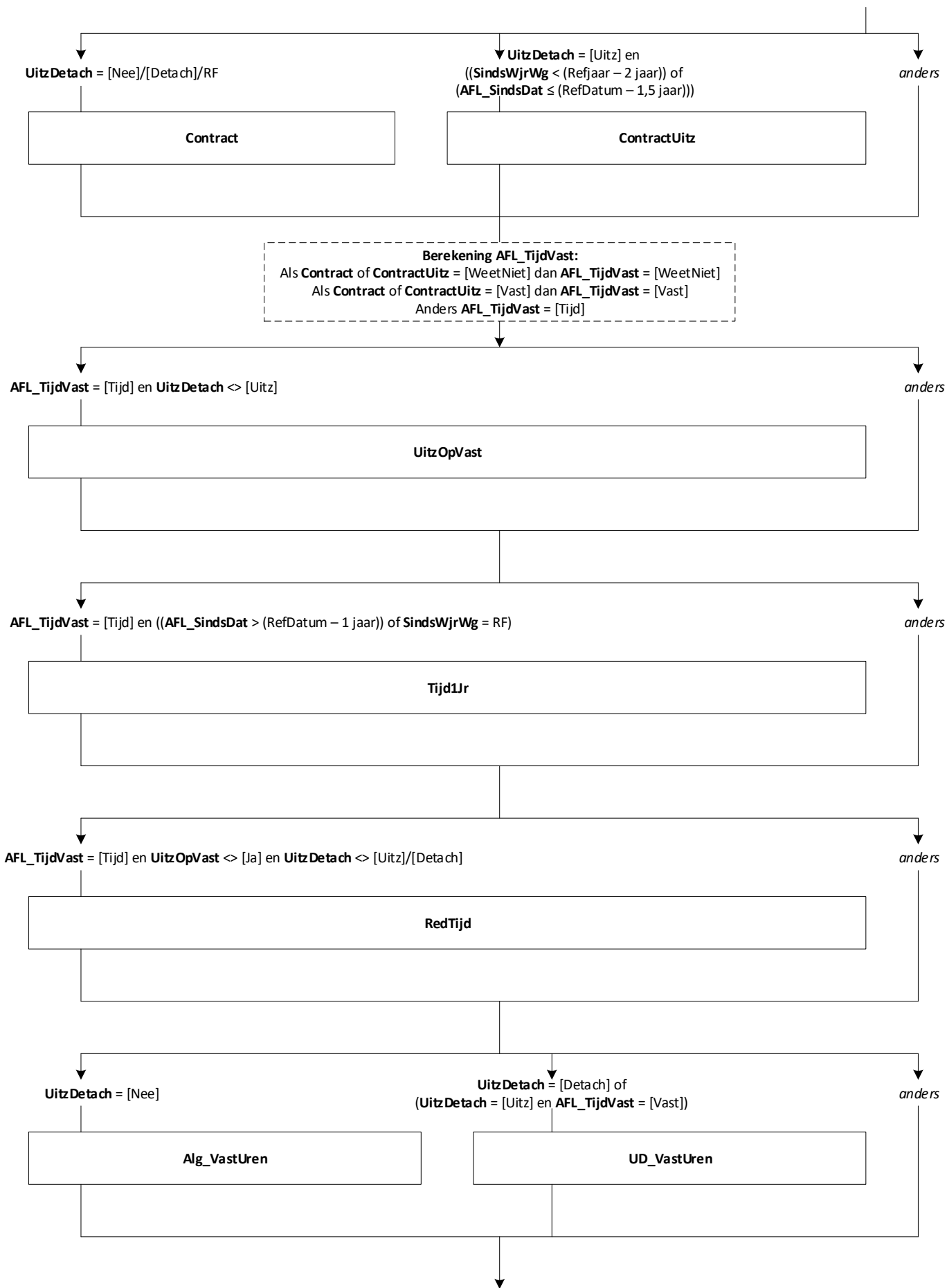
AFL_BurgStaat:
 Als *NAW.BurgStaat* = 2/5 dan *AFL_BurgStaat* = [Gehuwd]
 Als *NAW.BurgStaat* = 4/7 dan *AFL_BurgStaat* = [Gescheid]
 Als *NAW.BurgStaat* = 3/6 dan *AFL_BurgStaat* = [WeduwSt]
 Als *NAW.BurgStaat* = 1 dan *AFL_BurgStaat* = [NooitGeh]

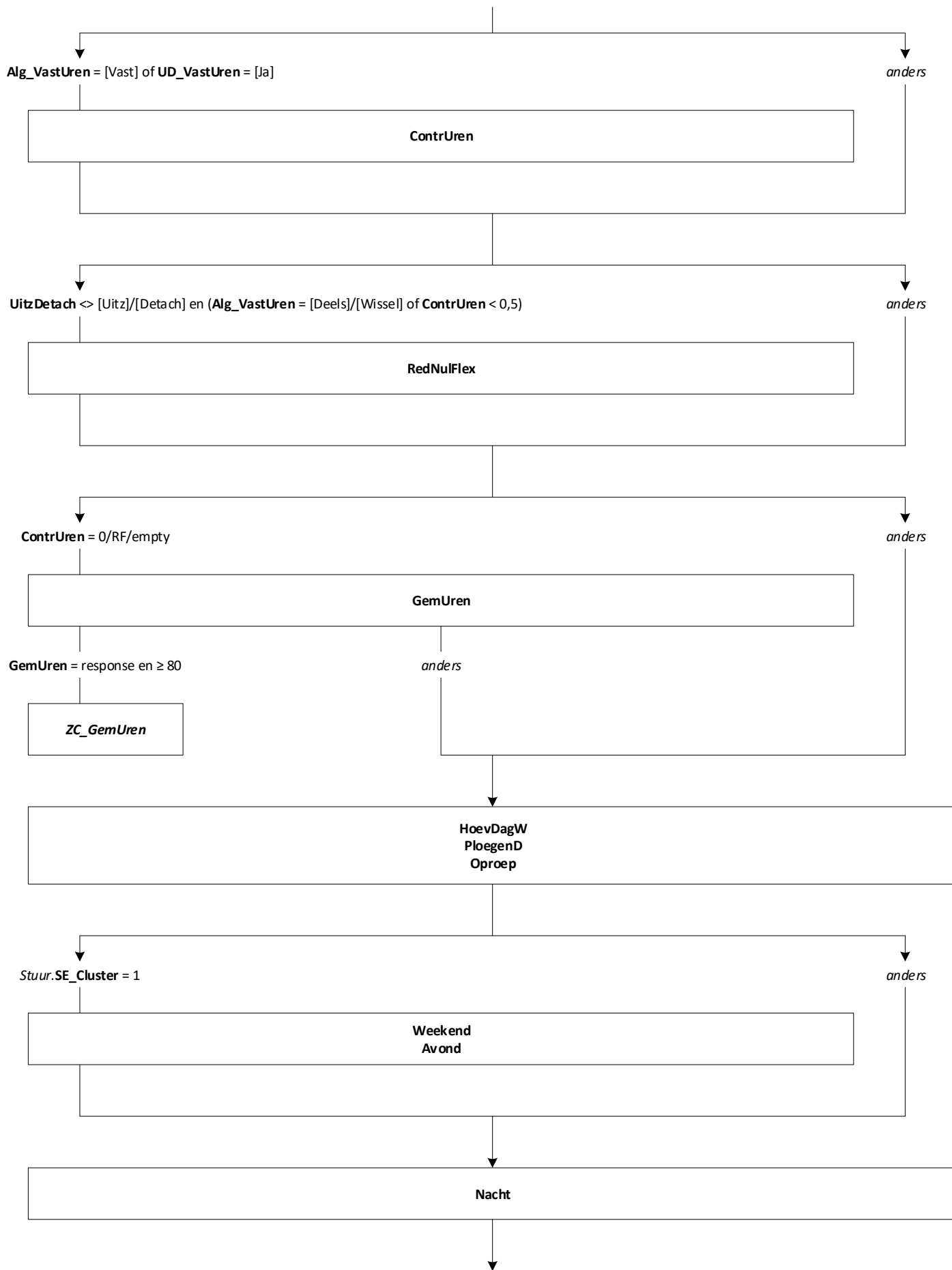


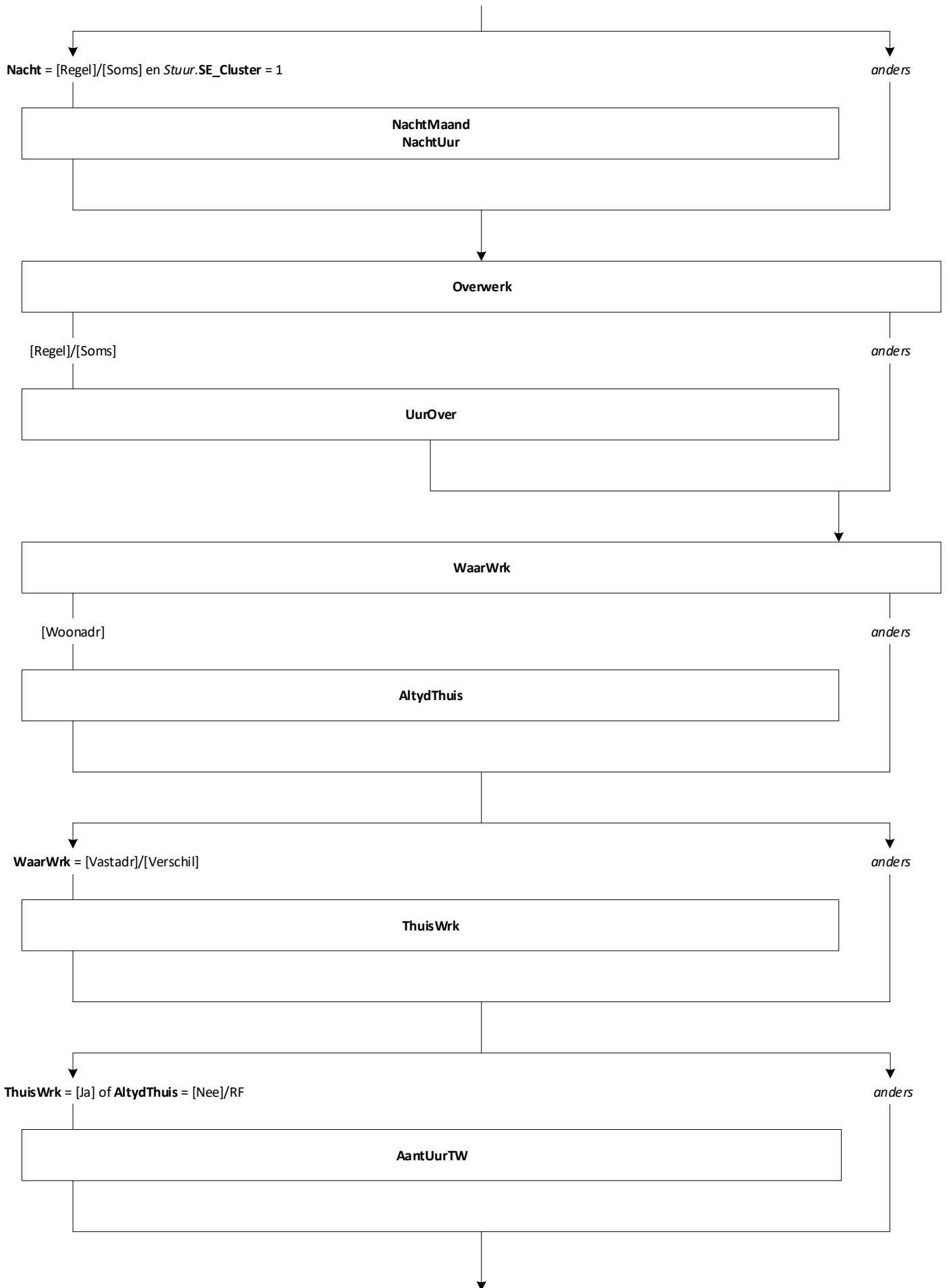


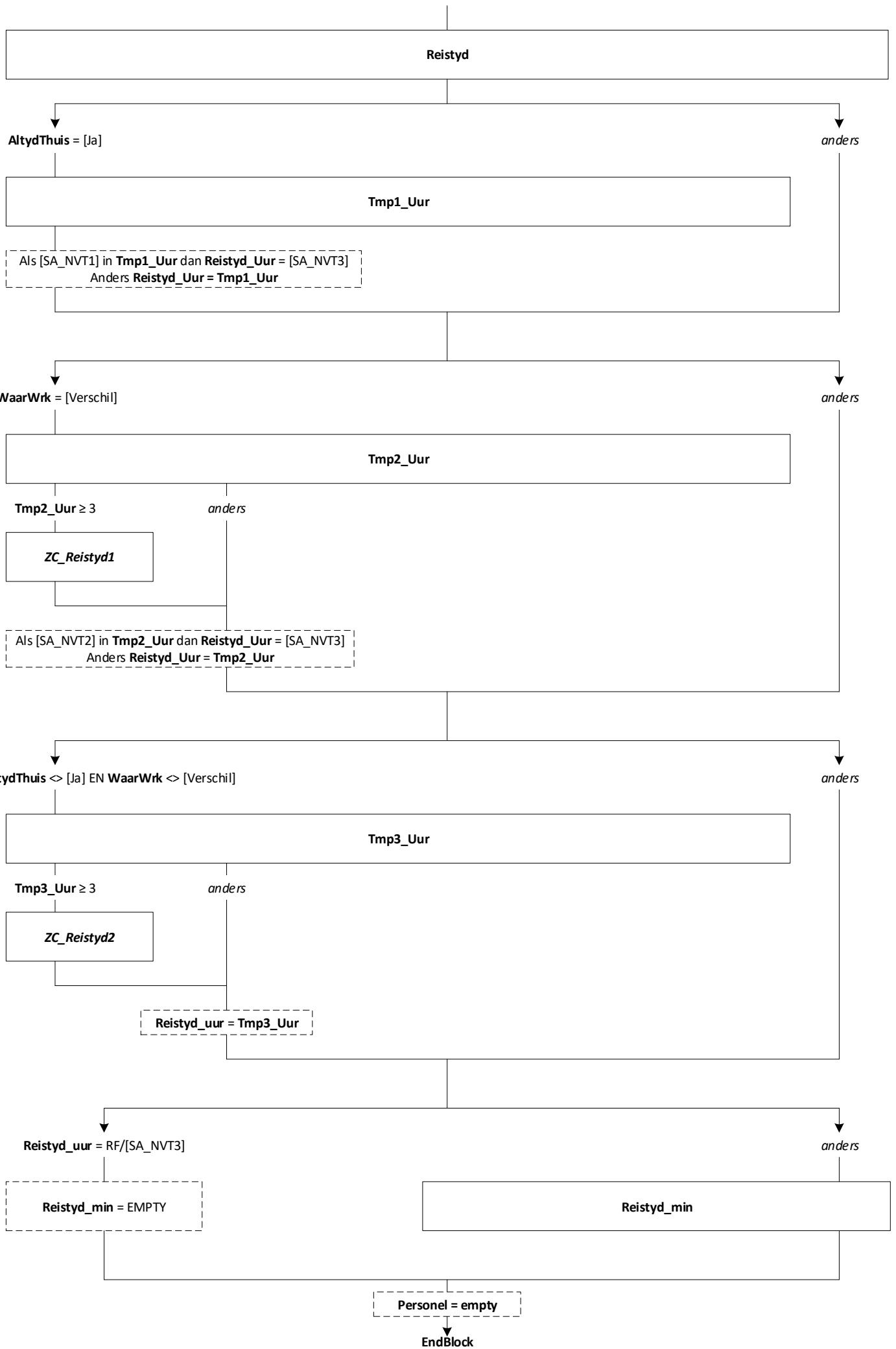


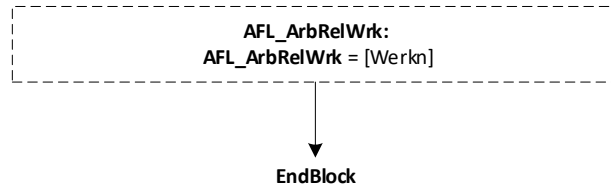


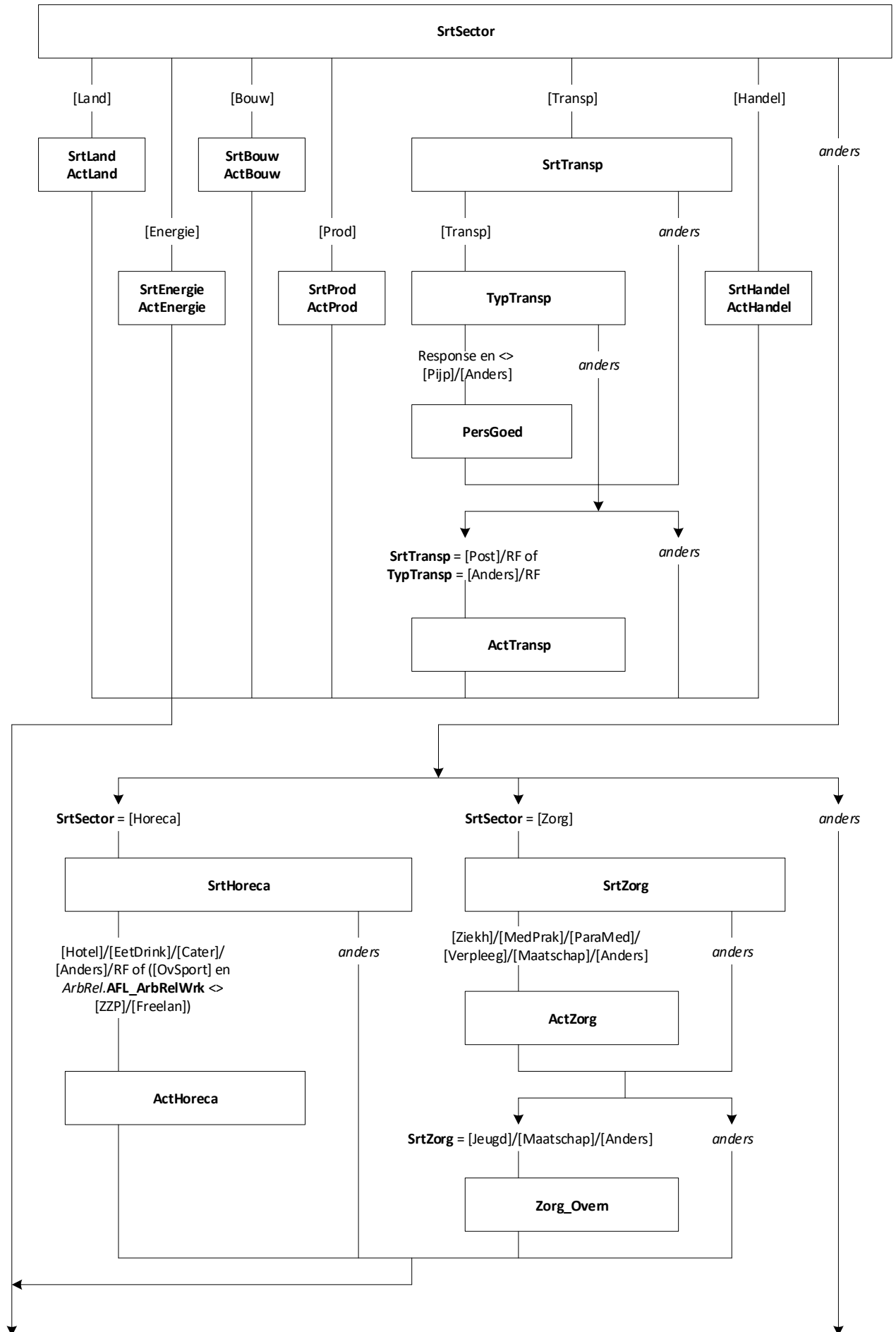


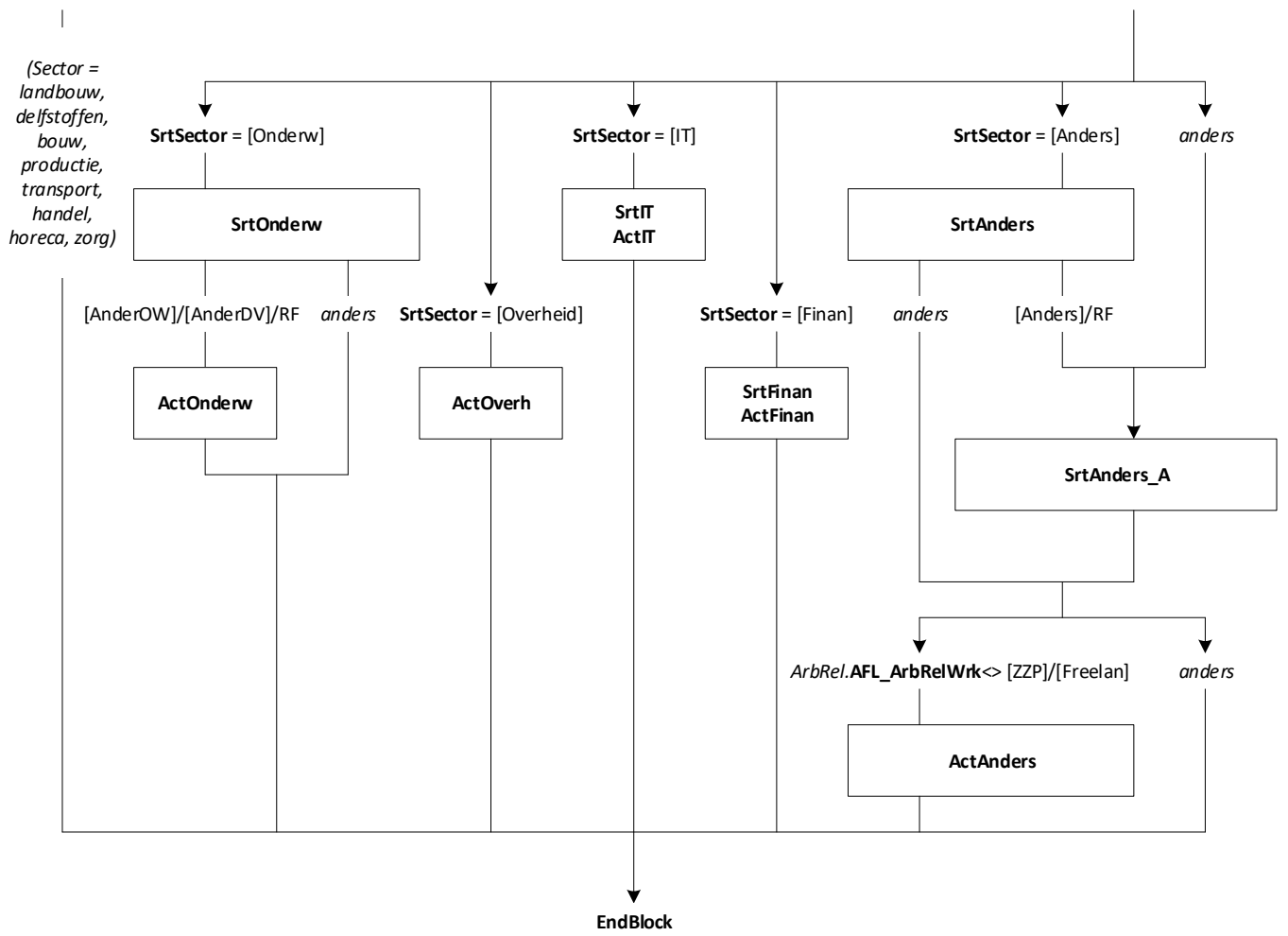


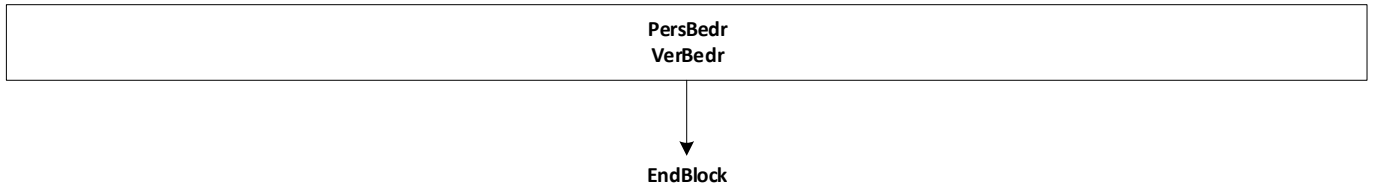


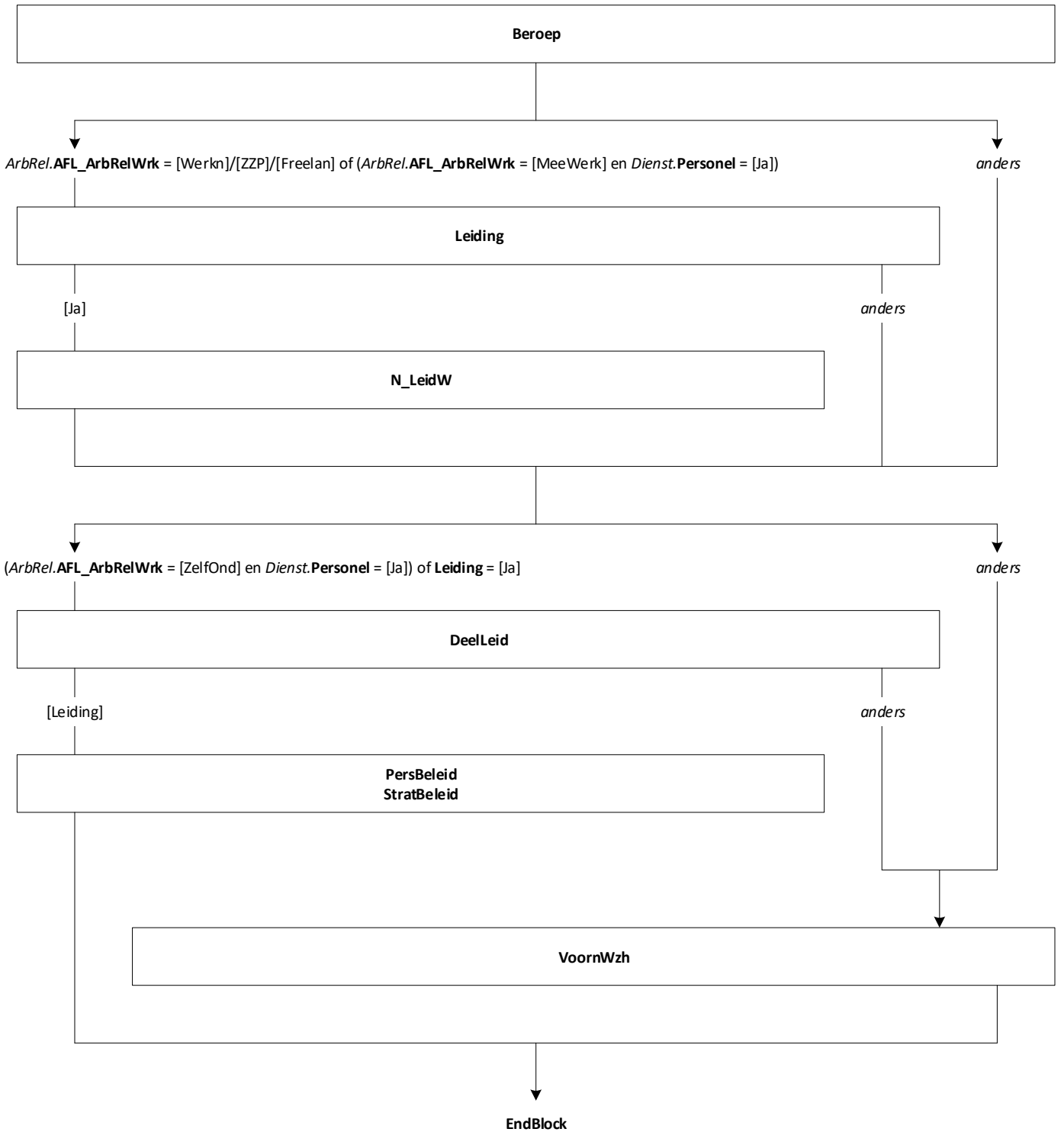


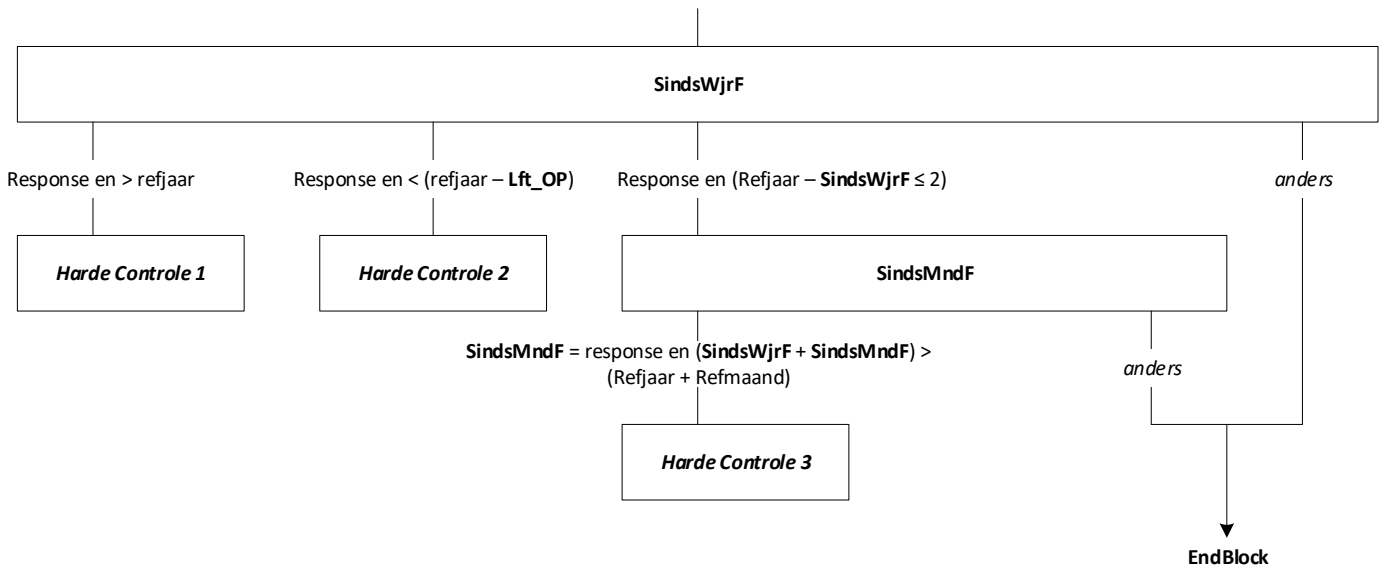


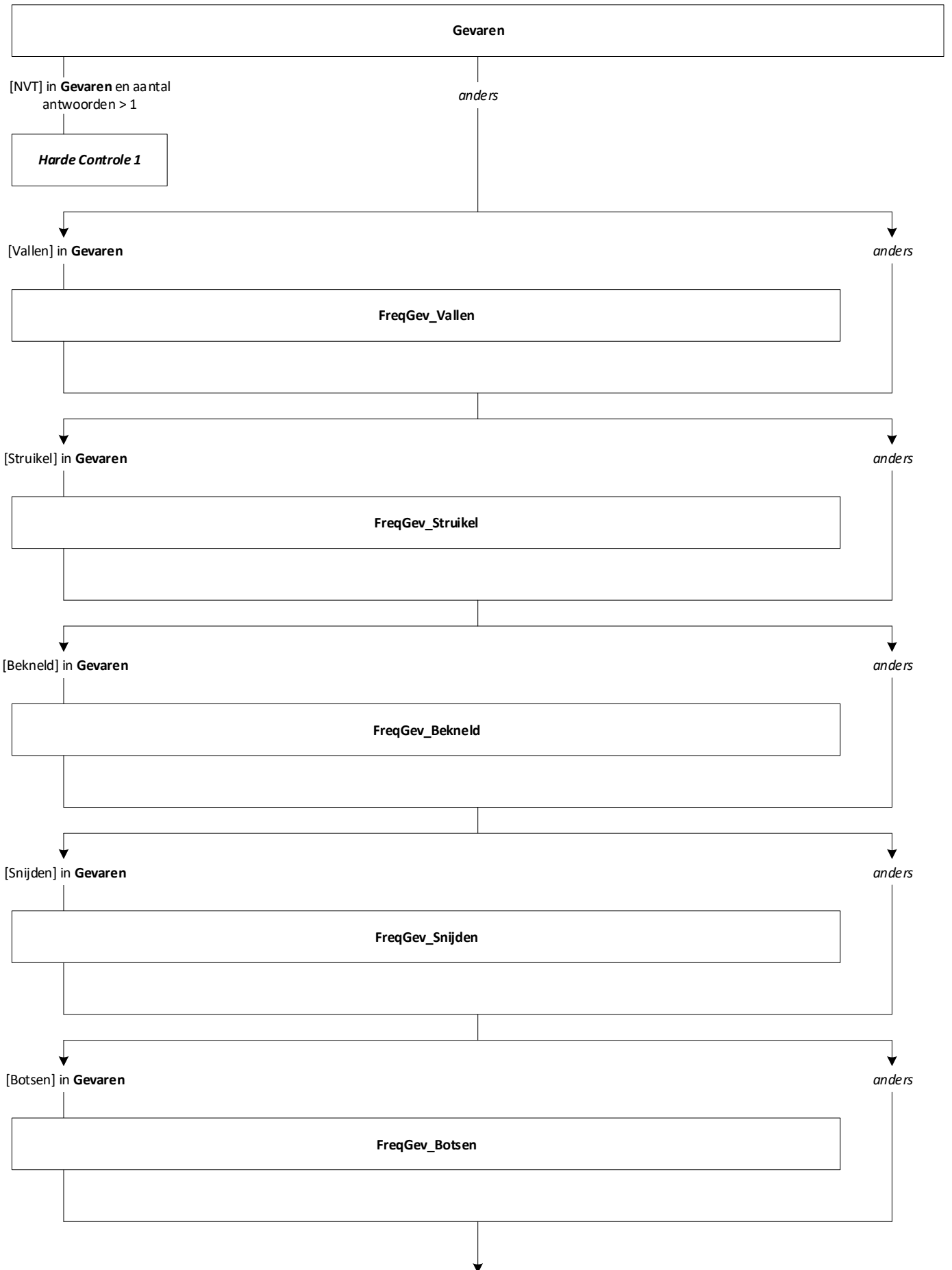


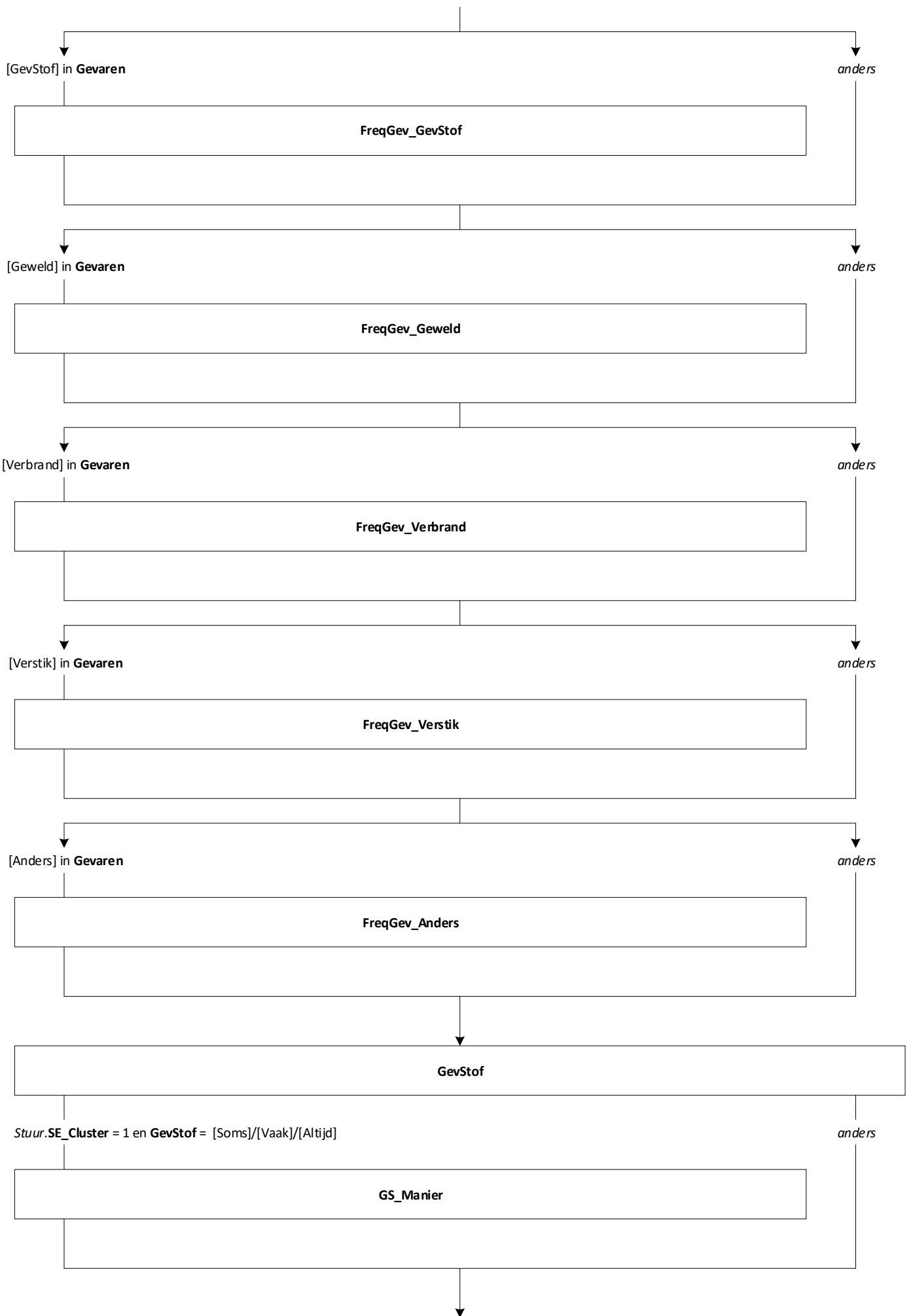


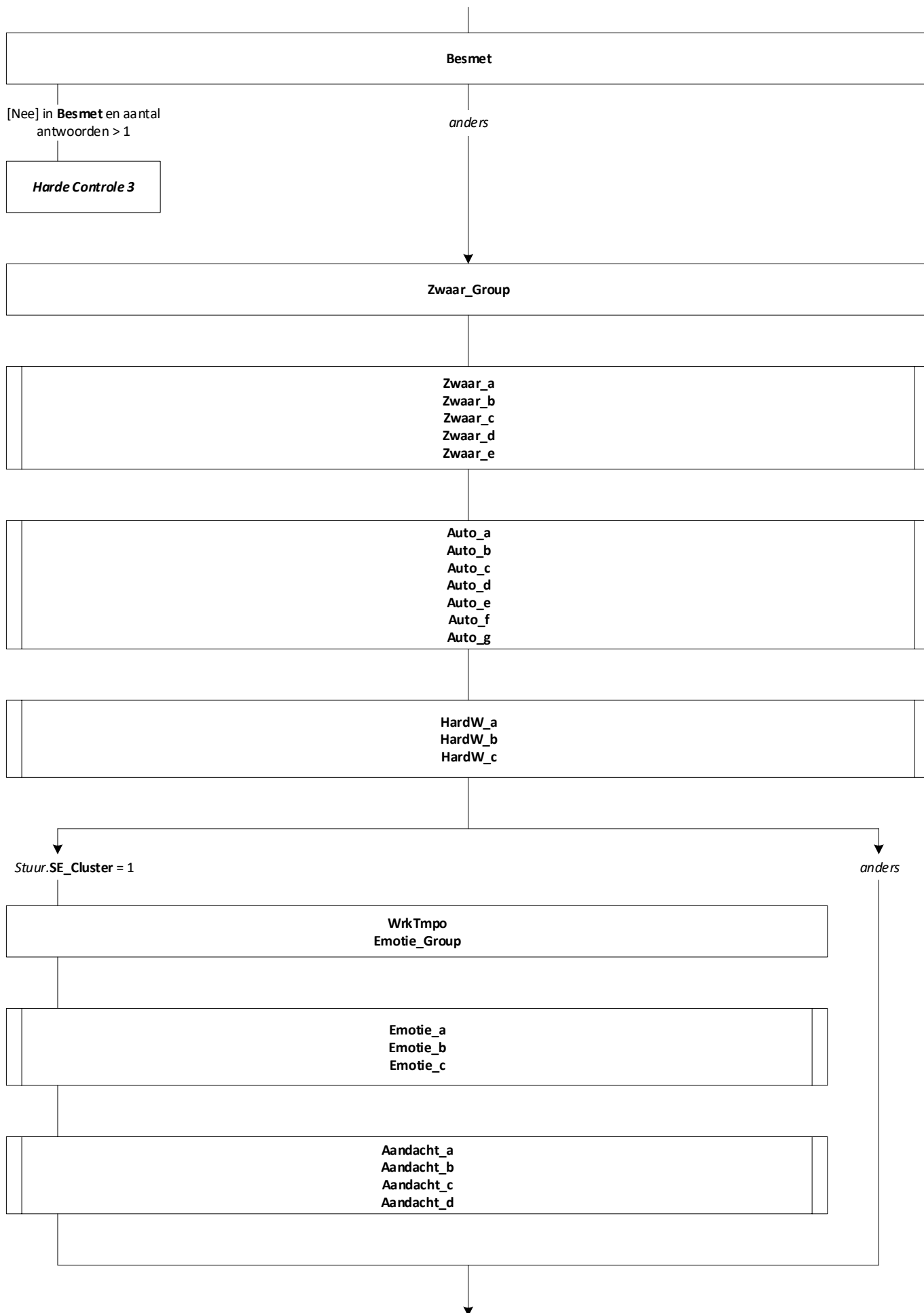


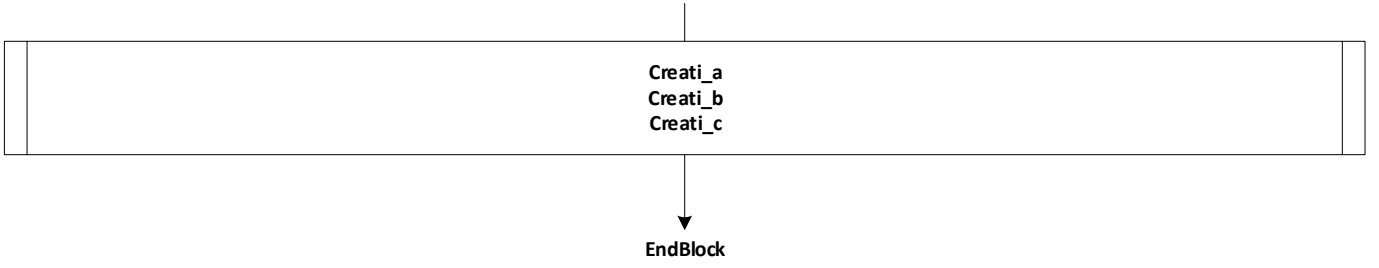


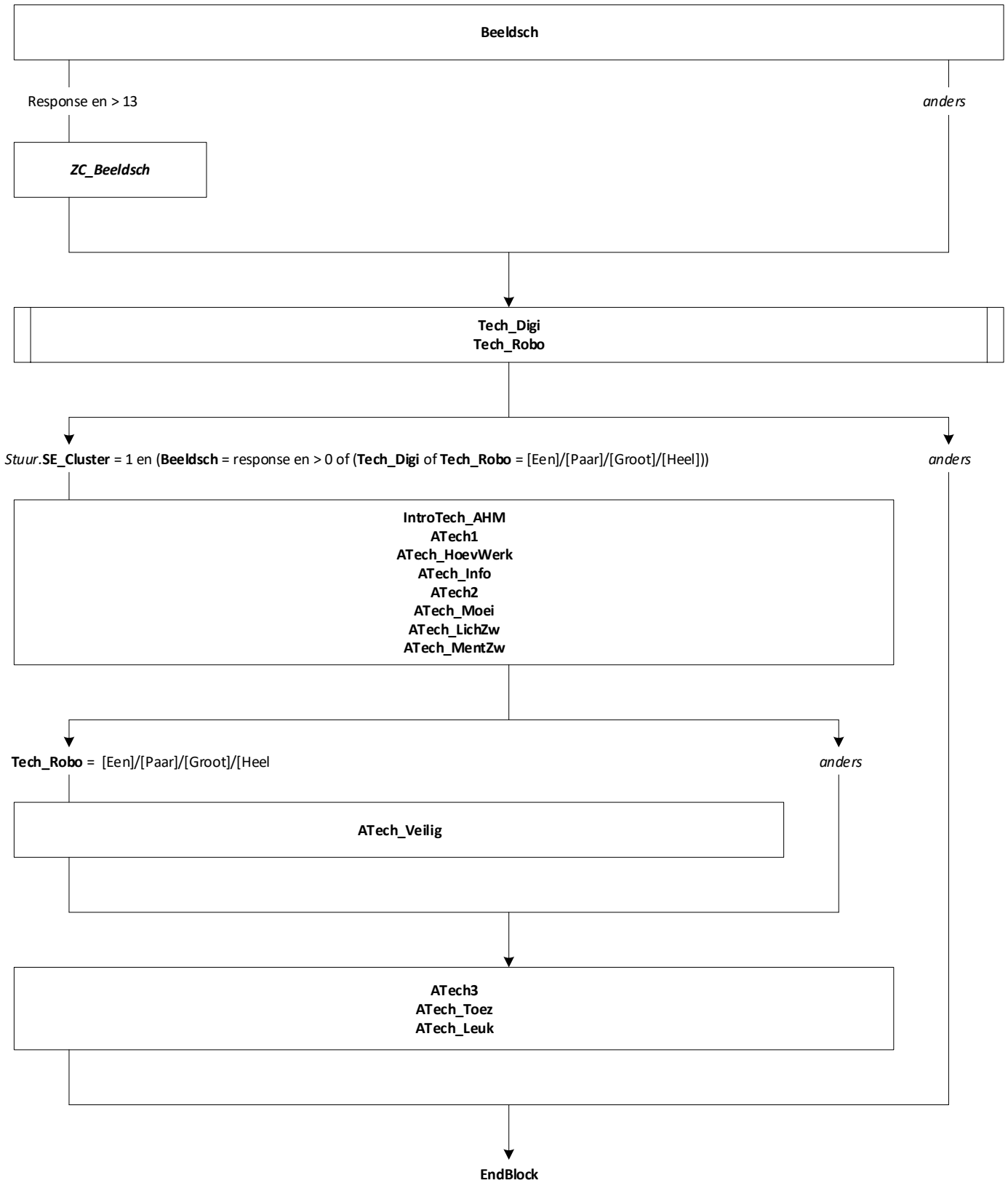


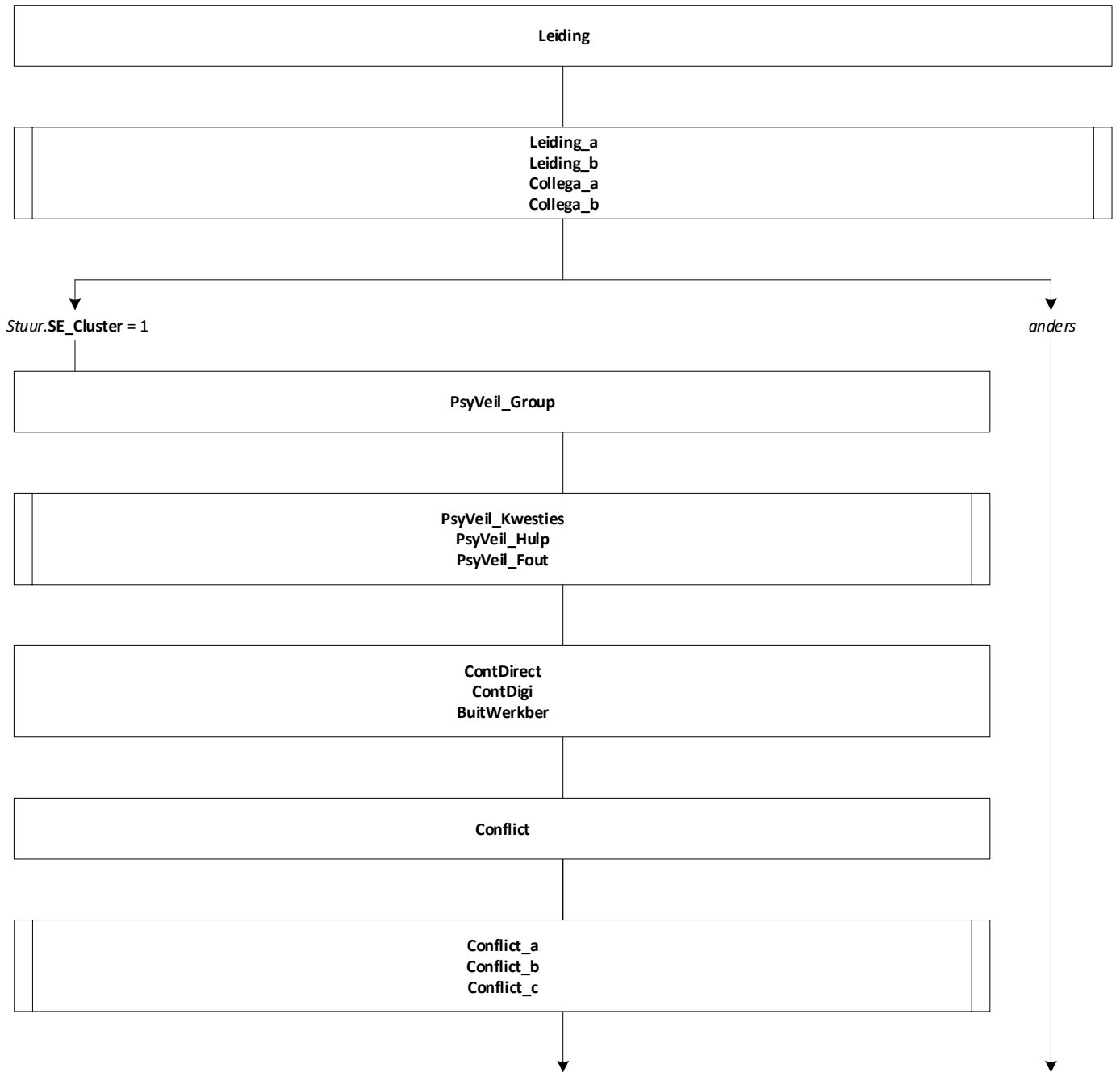


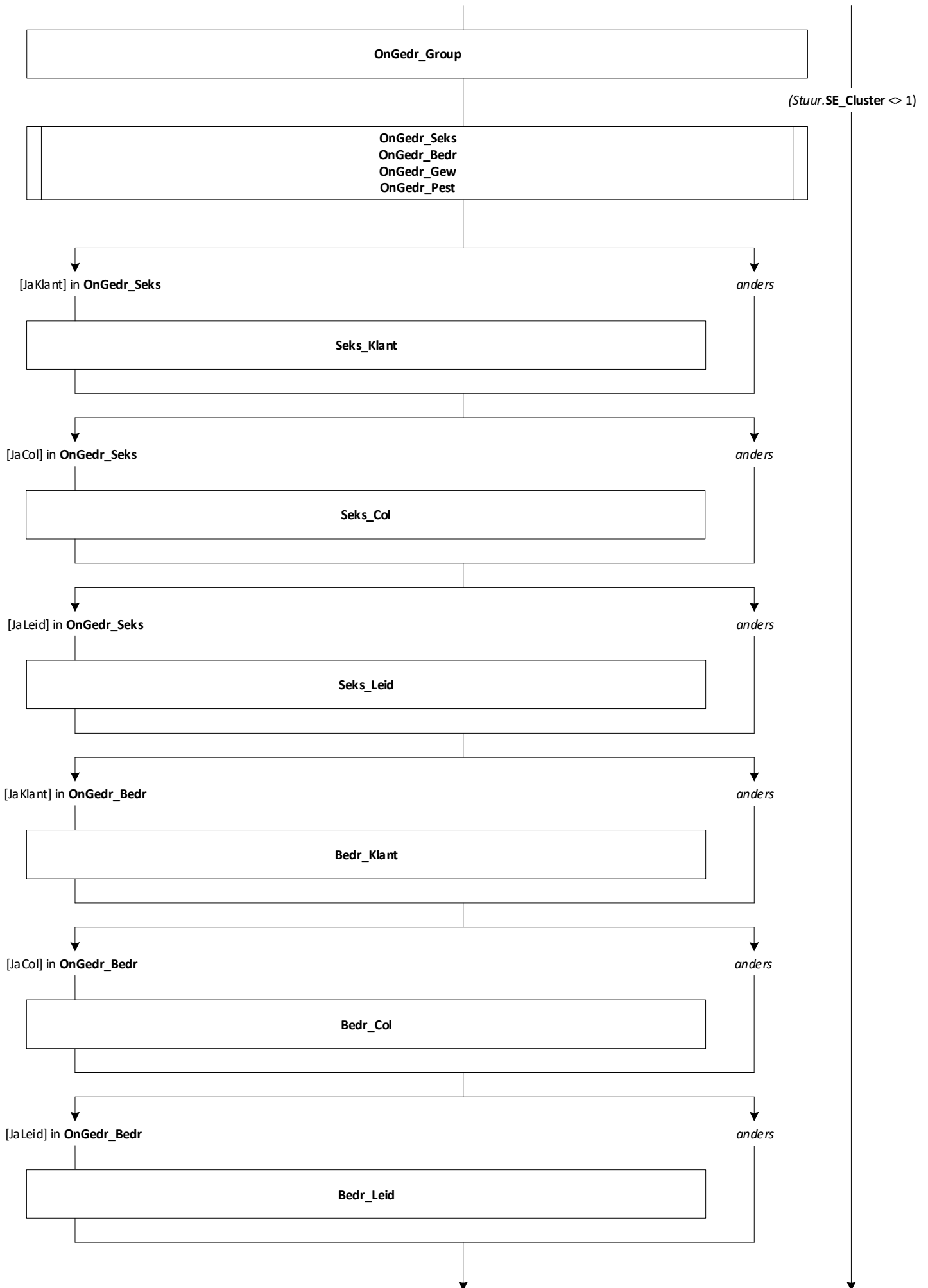


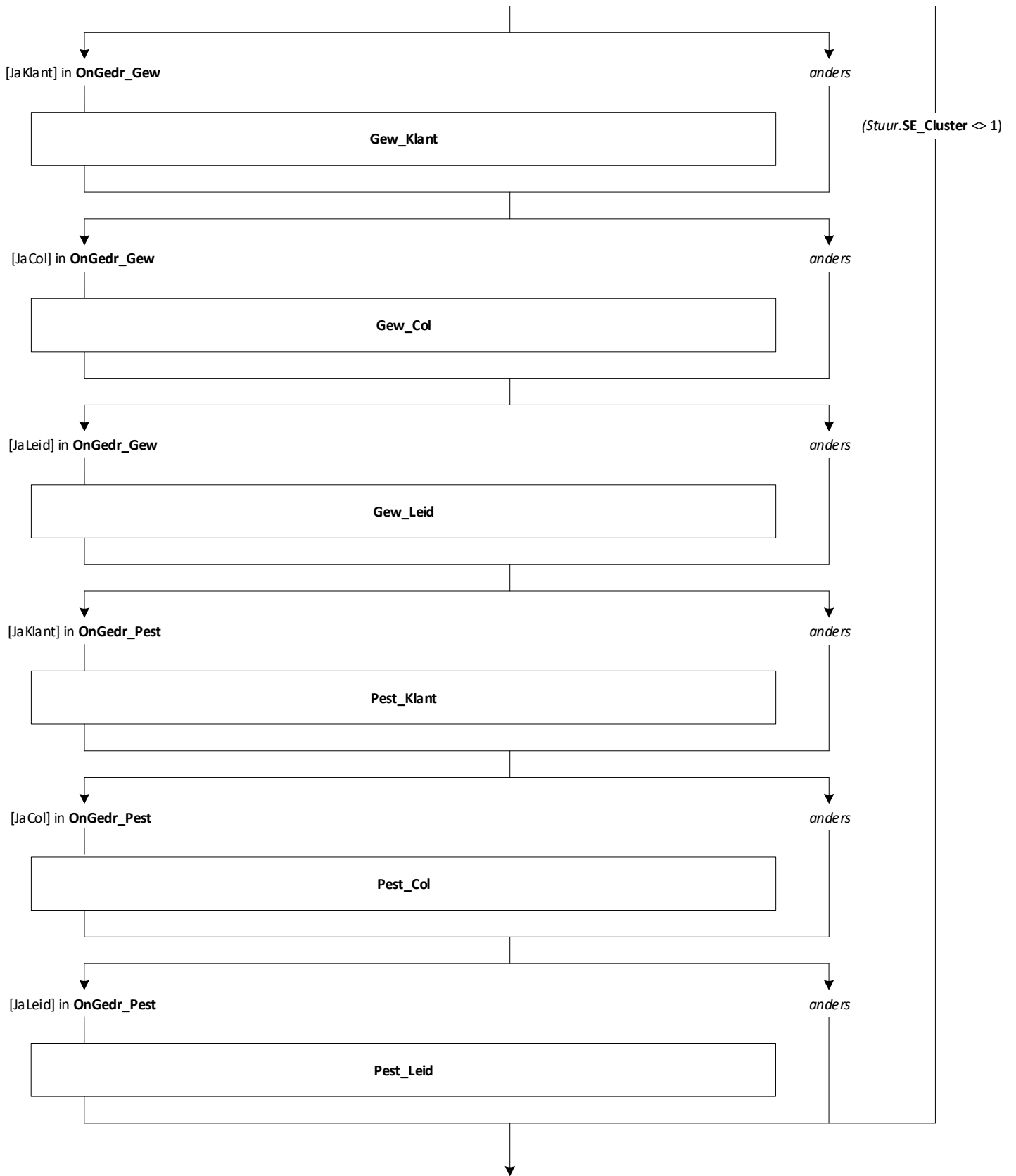


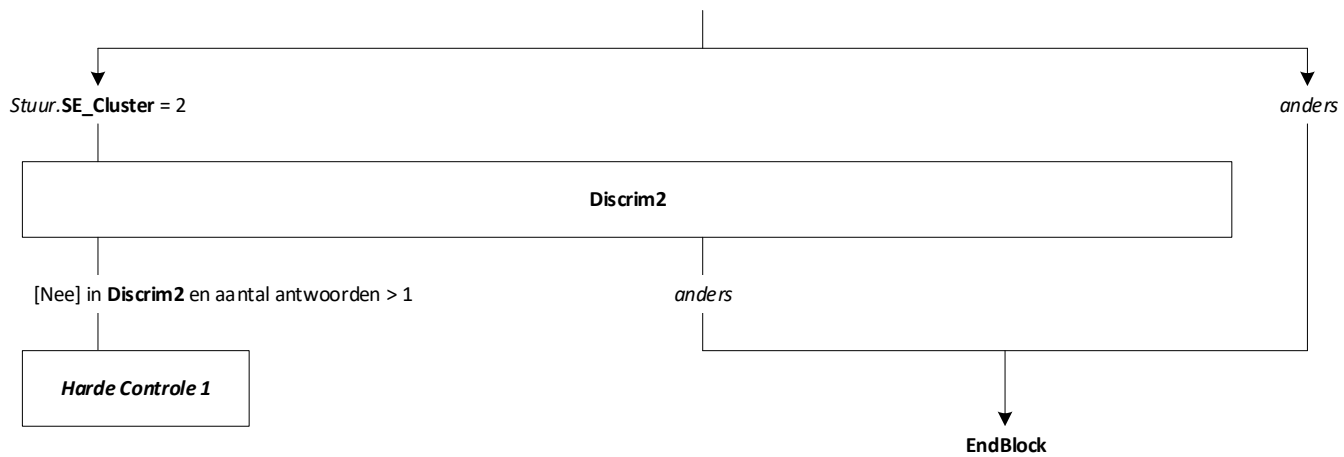


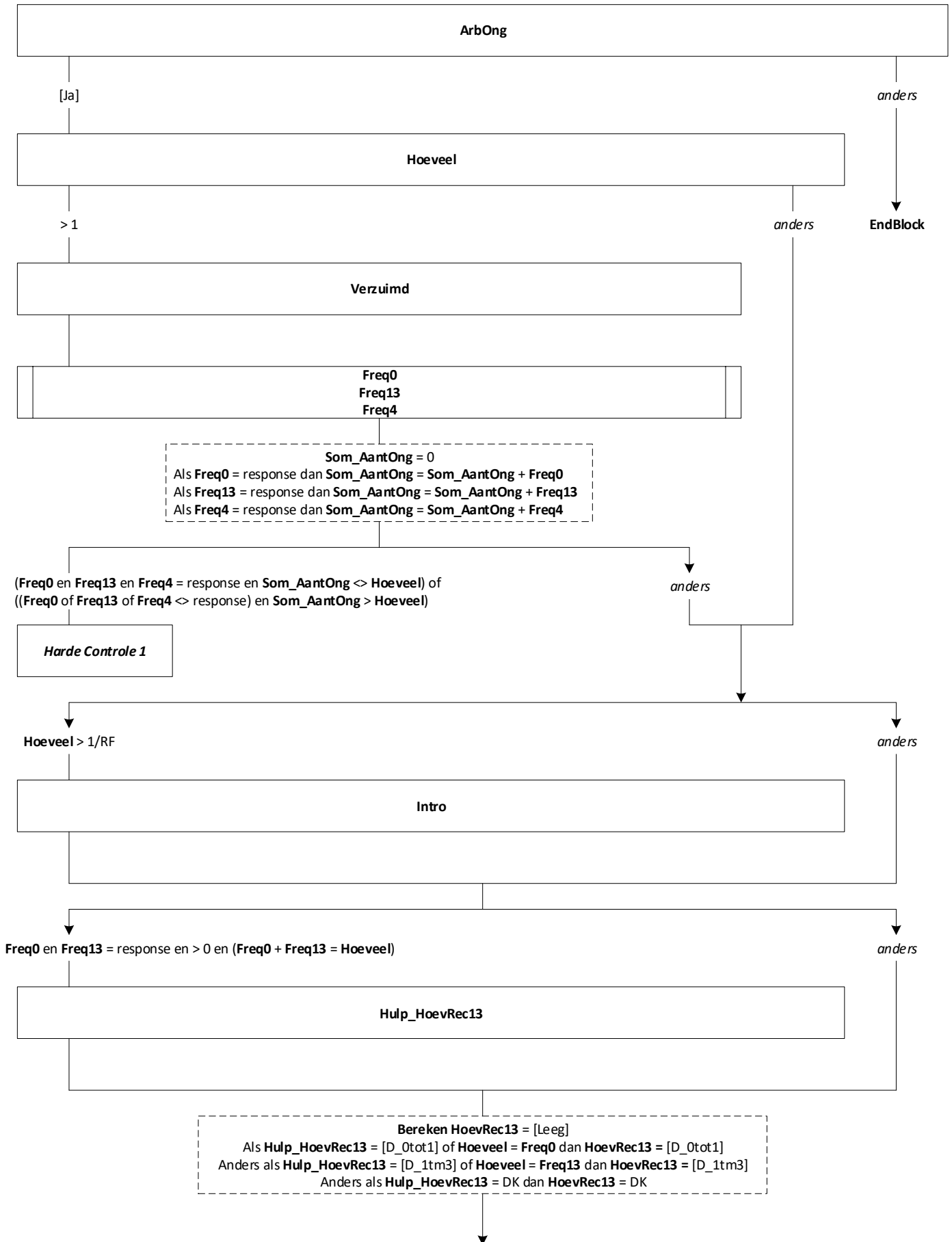


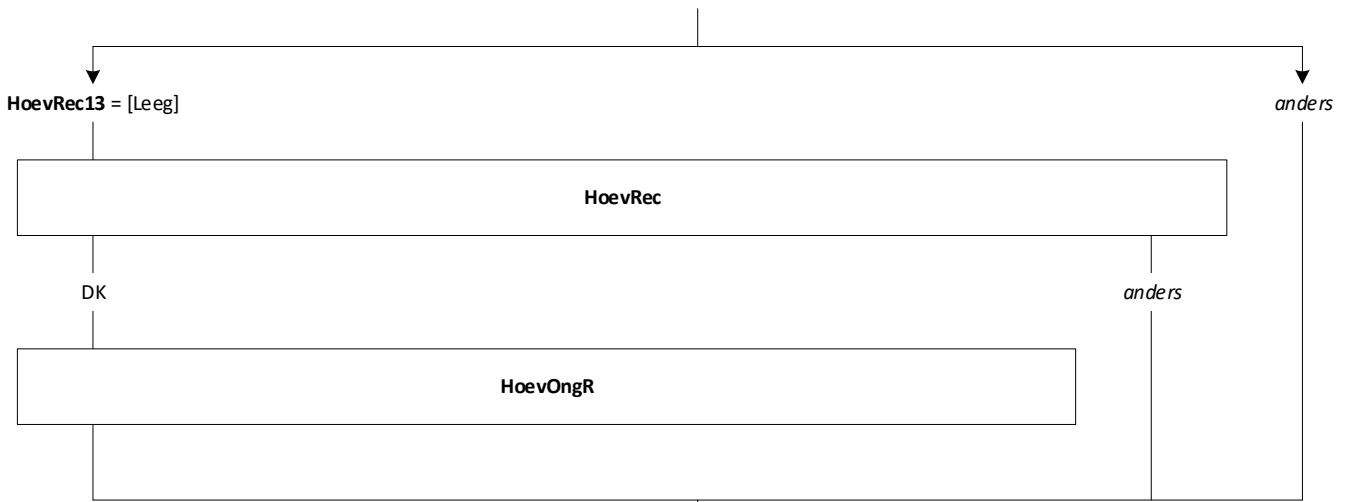












Bereken OngArray1:
 Als (HoevOngR = response en > [D_1tm3]) of (HoevRec = response en ≥ 4) of ((Freq4 = response en ≥ 1) en HoevOngR = RF) dan OngArray1 = [Dag4_Nr1]
 Anders OngArray1 = [KortOnbk]

Bereken OngArray2:
 Als Freq4 = response en ≥ 2 en OngArray1 = [Dag4_Nr1] dan OngArray2 = [Dag4_Nr2]
 Anders als Freq4 = response en ≥ 1 en OngArray1 = [KortOnbk] dan OngArray2 = [Dag4_Nr1]
 Anders OngArray2 = leeg.

Bereken OngArray3:
 Als Freq4 = response en ≥ 3 en OngArray1 = [Dag4_Nr1] dan OngArray3 = [Dag4_Nr3]
 Anders als Freq4 = response en ≥ 2 en OngArray1 = [KortOnbk] dan OngArray3 = [Dag4_Nr2]
 Anders OngArray3 = leeg.

Bereken Hlp_Route:
 Als OngArray1 = [KortOnbk] en OngArray2 = empty dan Hlp_Route = [T1]
 Als OngArray1 = [KortOnbk] en OngArray2 = [Dag4_Nr1] en OngArray3 = empty dan Hlp_Route = [T1T2]
 Als OngArray1 = [KortOnbk] en OngArray2 = [Dag4_Nr1] en OngArray3 = [Dag4_Nr2] dan Hlp_Route = [T1T2T3]
 Als OngArray1 = [Dag4_Nr1] en OngArray2 = empty dan Hlp_Route = [T2]
 Als OngArray1 = [Dag4_Nr1] en OngArray2 = [Dag4_Nr2] en OngArray3 = empty dan Hlp_Route = [T2T3]
 Als OngArray1 = [Dag4_Nr1] en OngArray2 = [Dag4_Nr2] en OngArray3 = [Dag4_Nr3] dan Hlp_Route = [T2T3T3]

