



Centraal Bureau  
voor de Statistiek

# Belevingen 2023

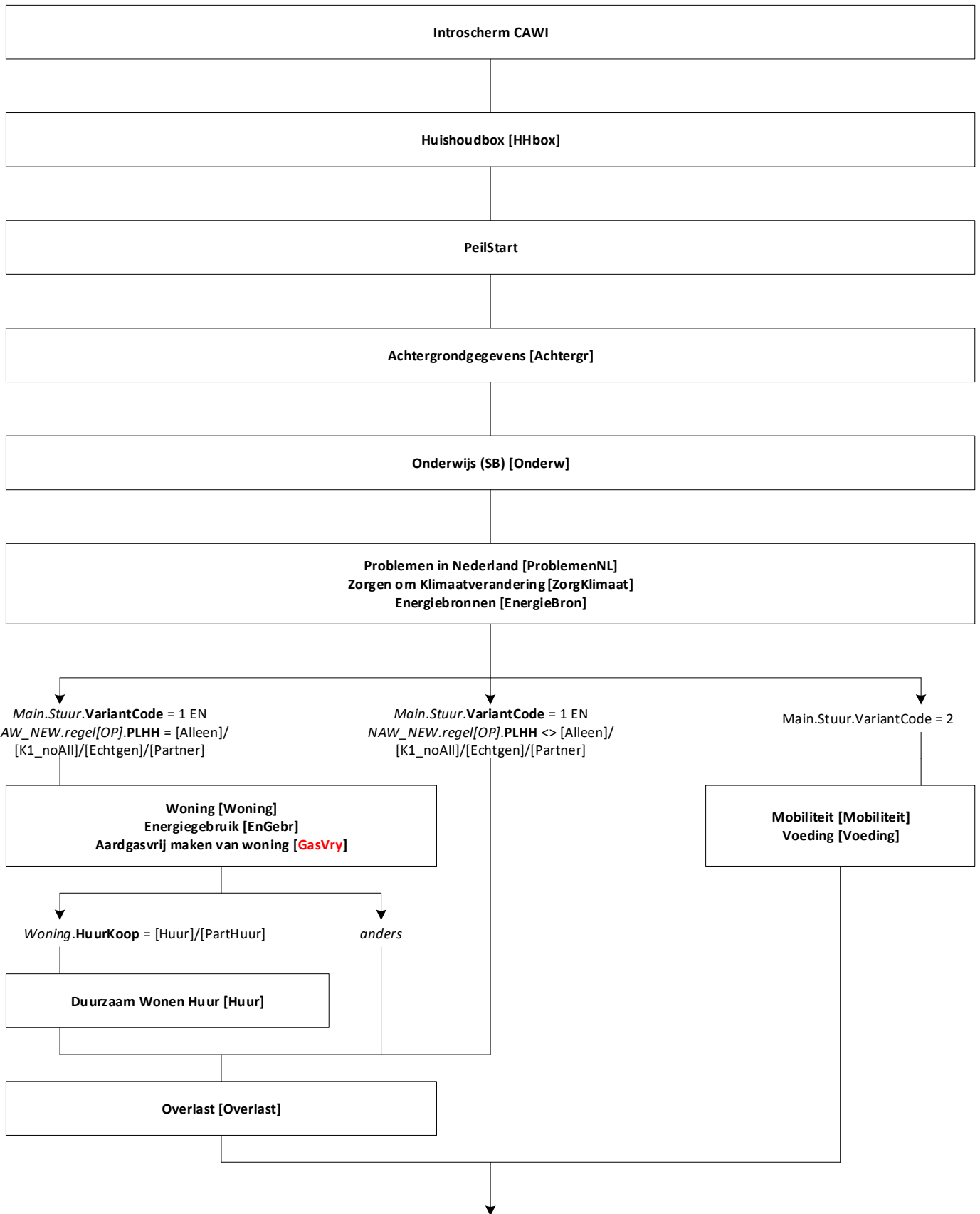
**Jeanne Heil & Loes Muijsers**

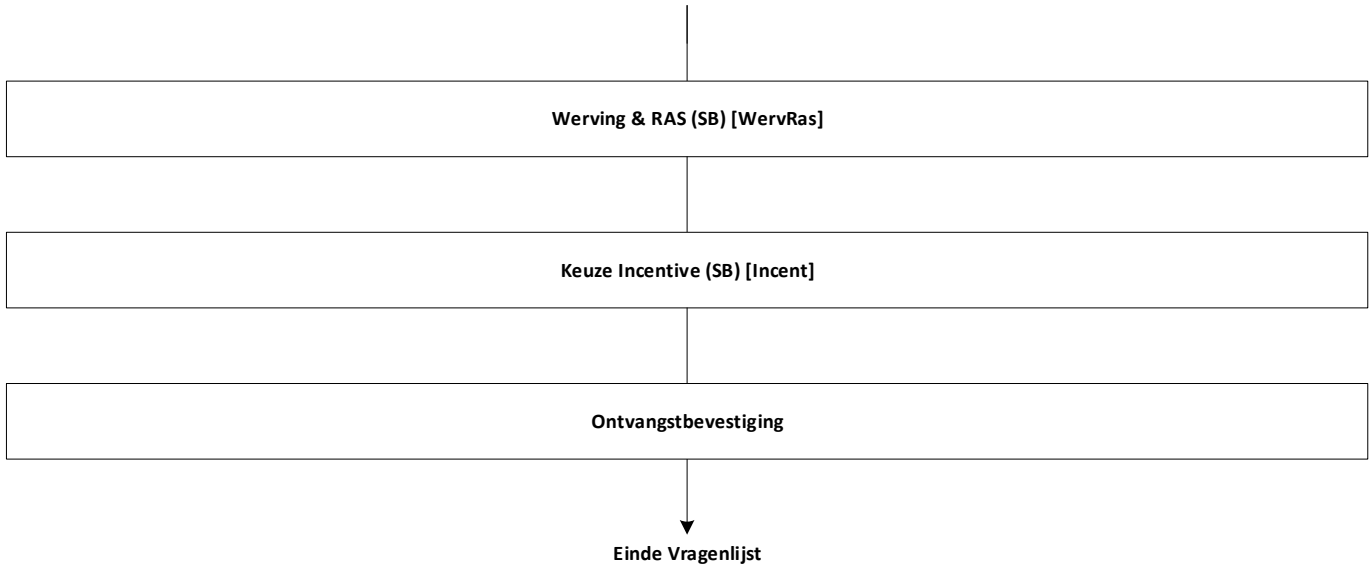
Versie: 2.4

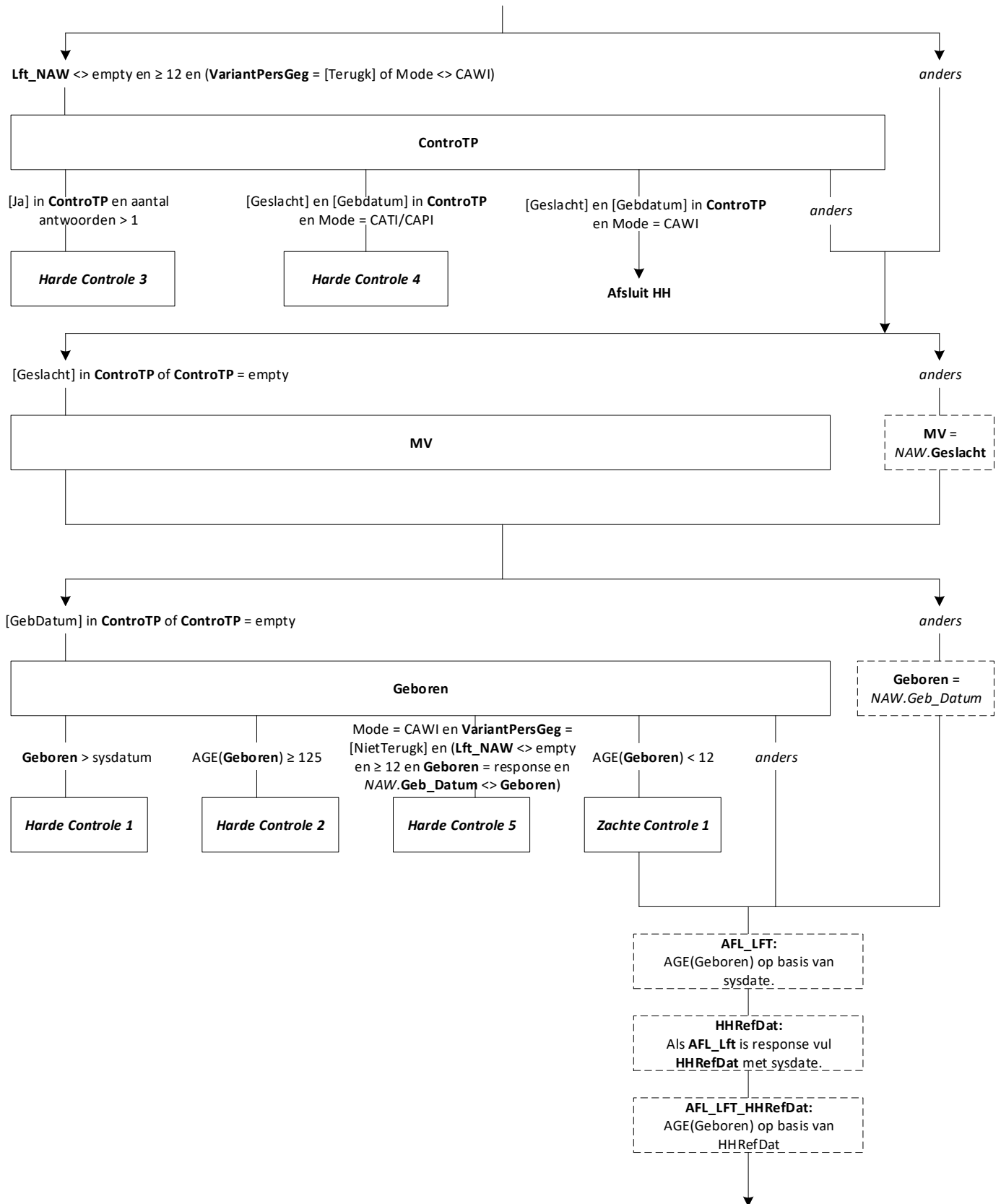
Datum: 16-12-2022

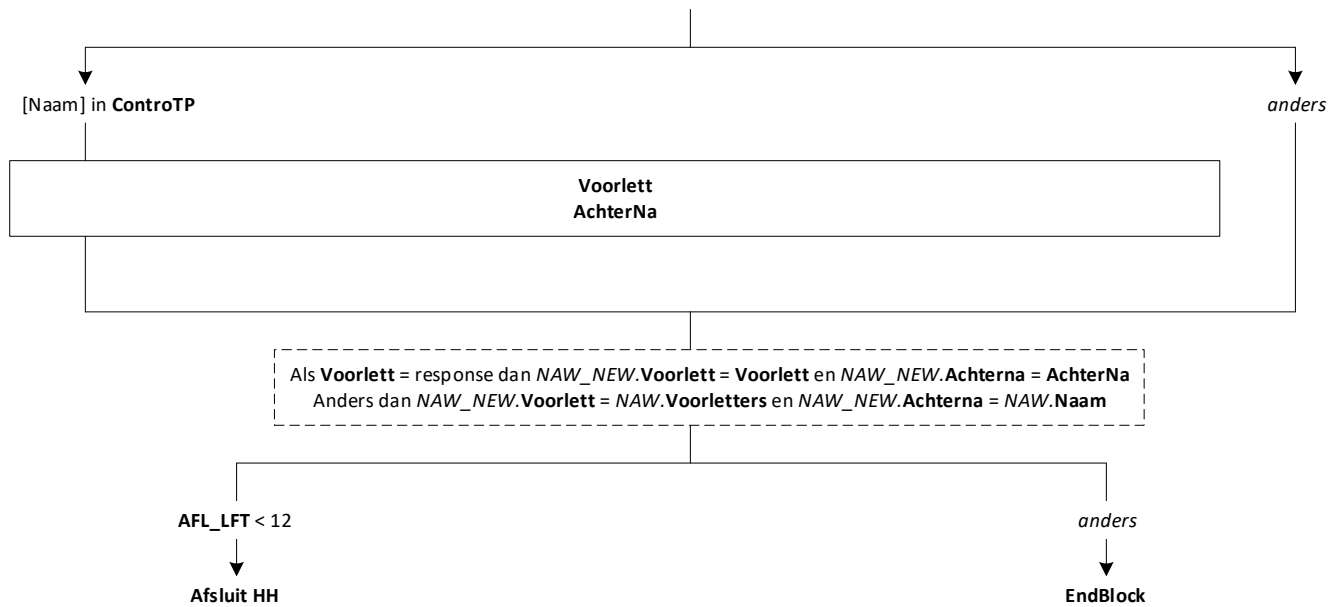


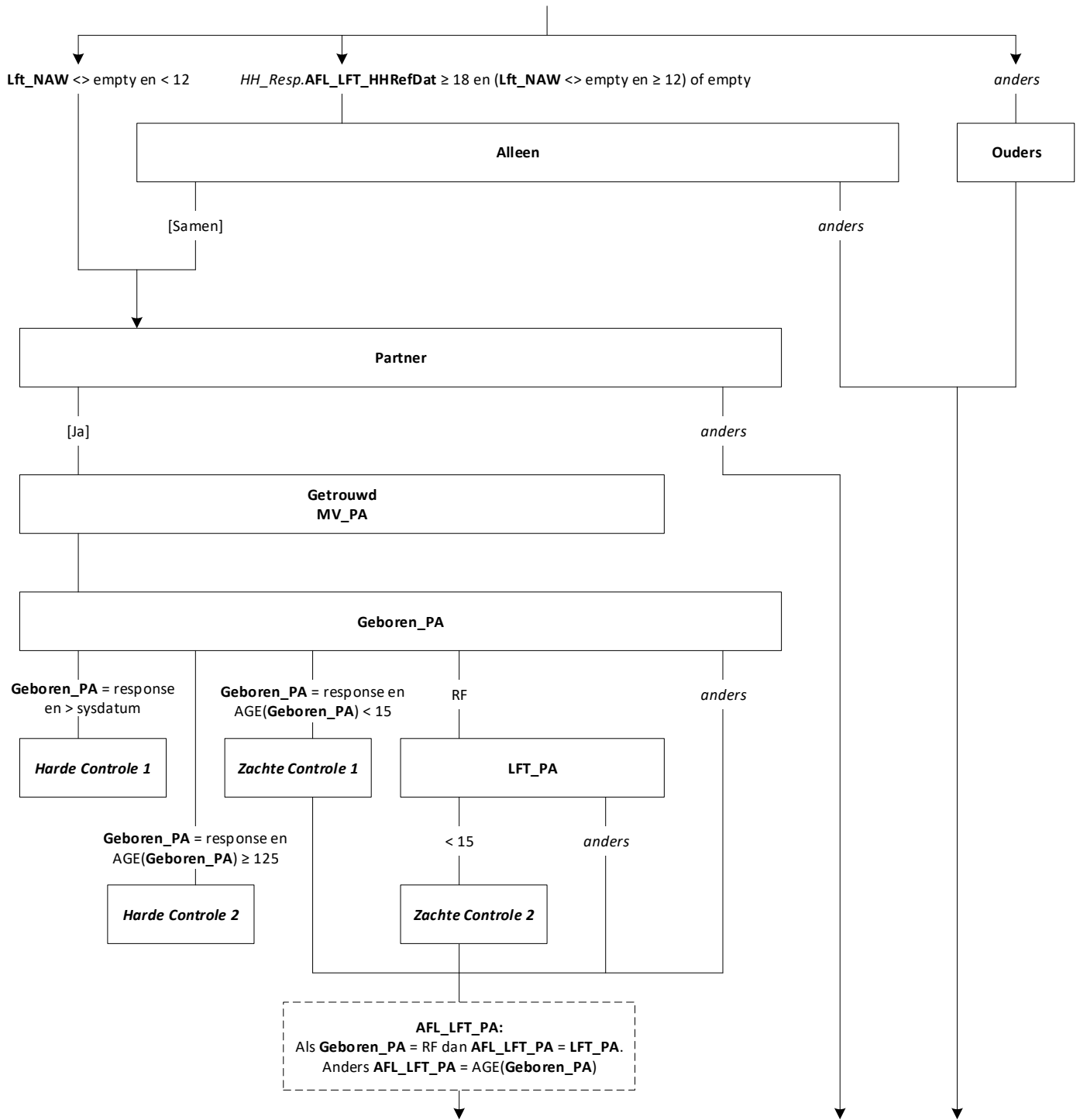
# Blokkenschema

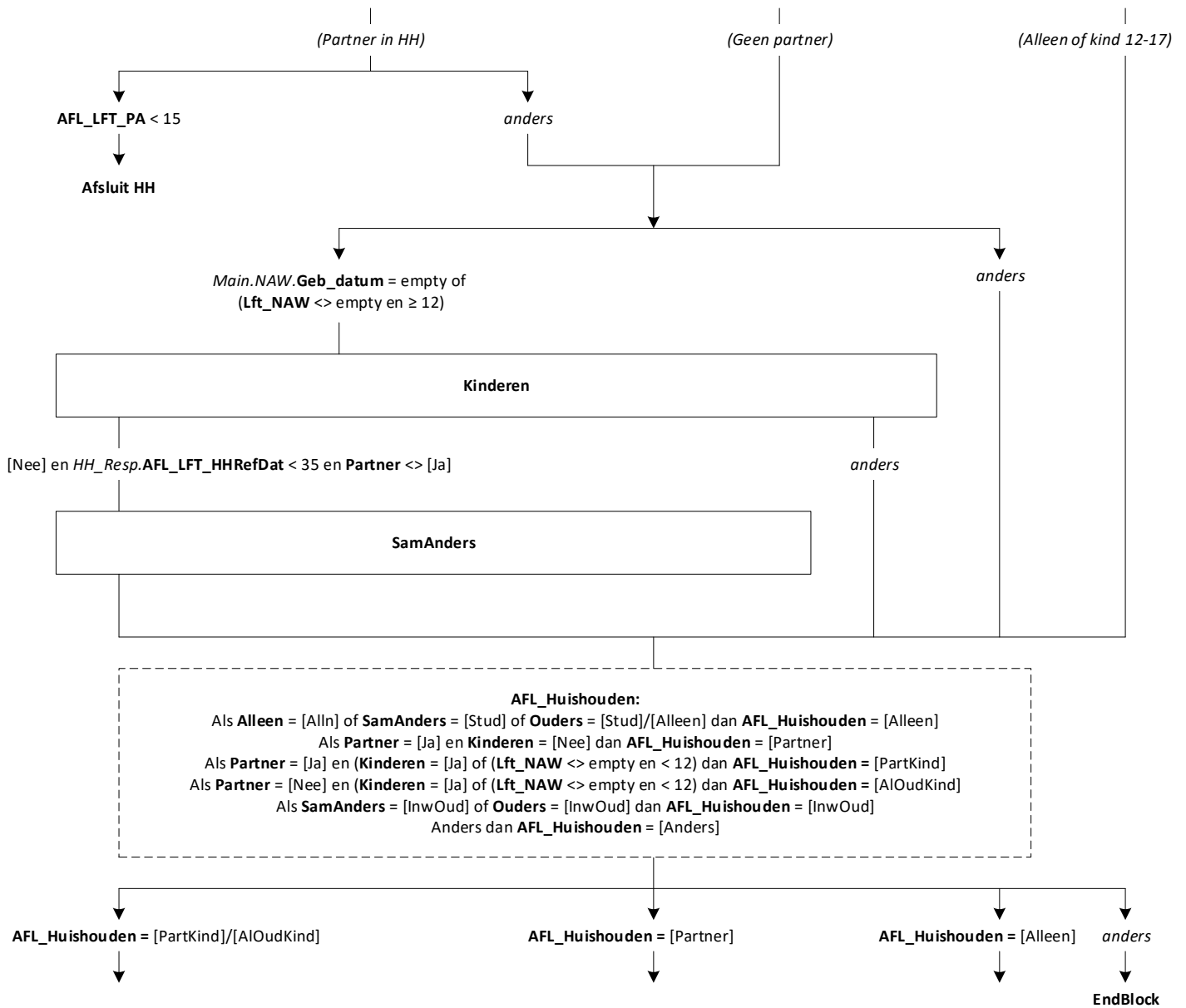


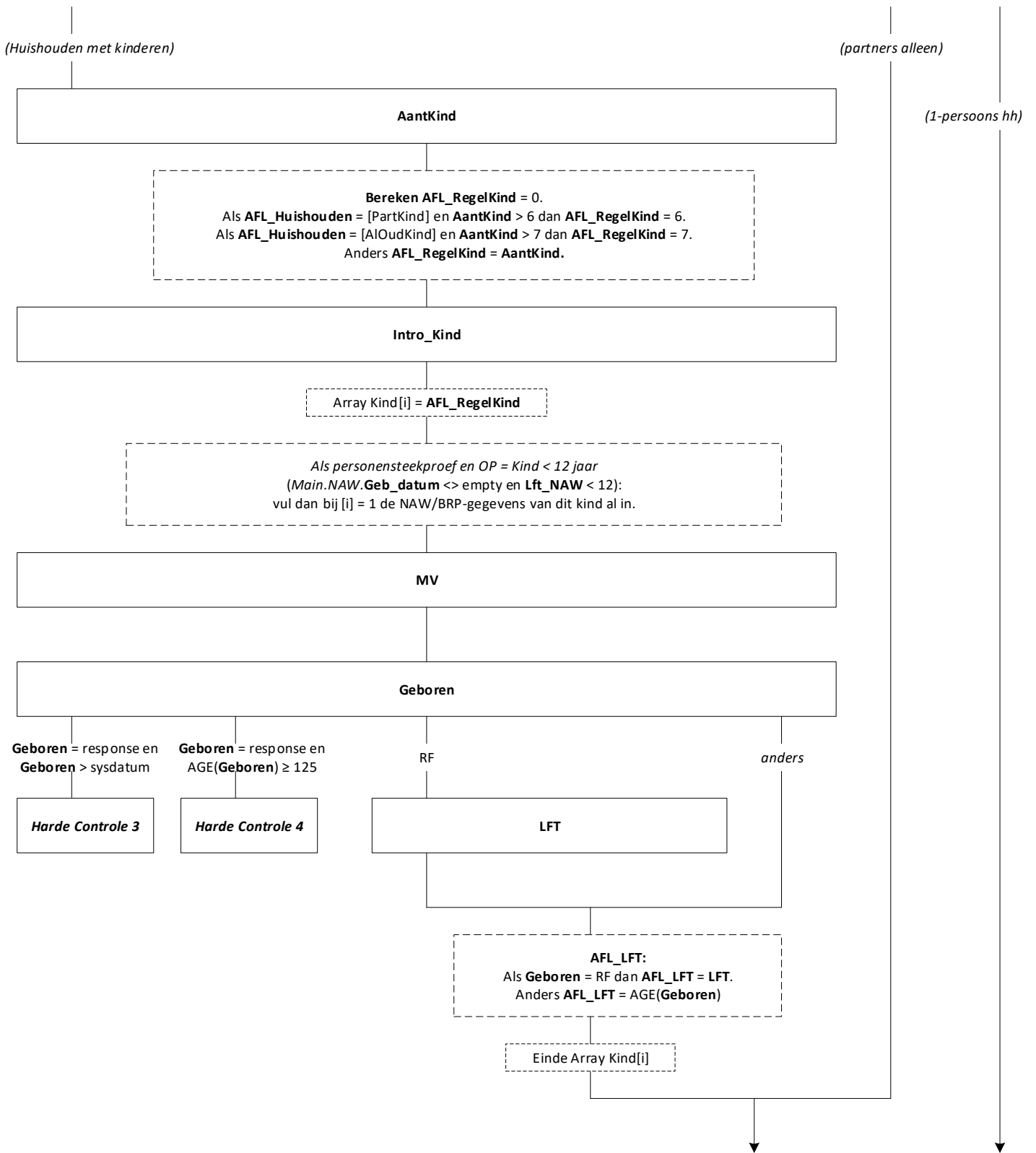




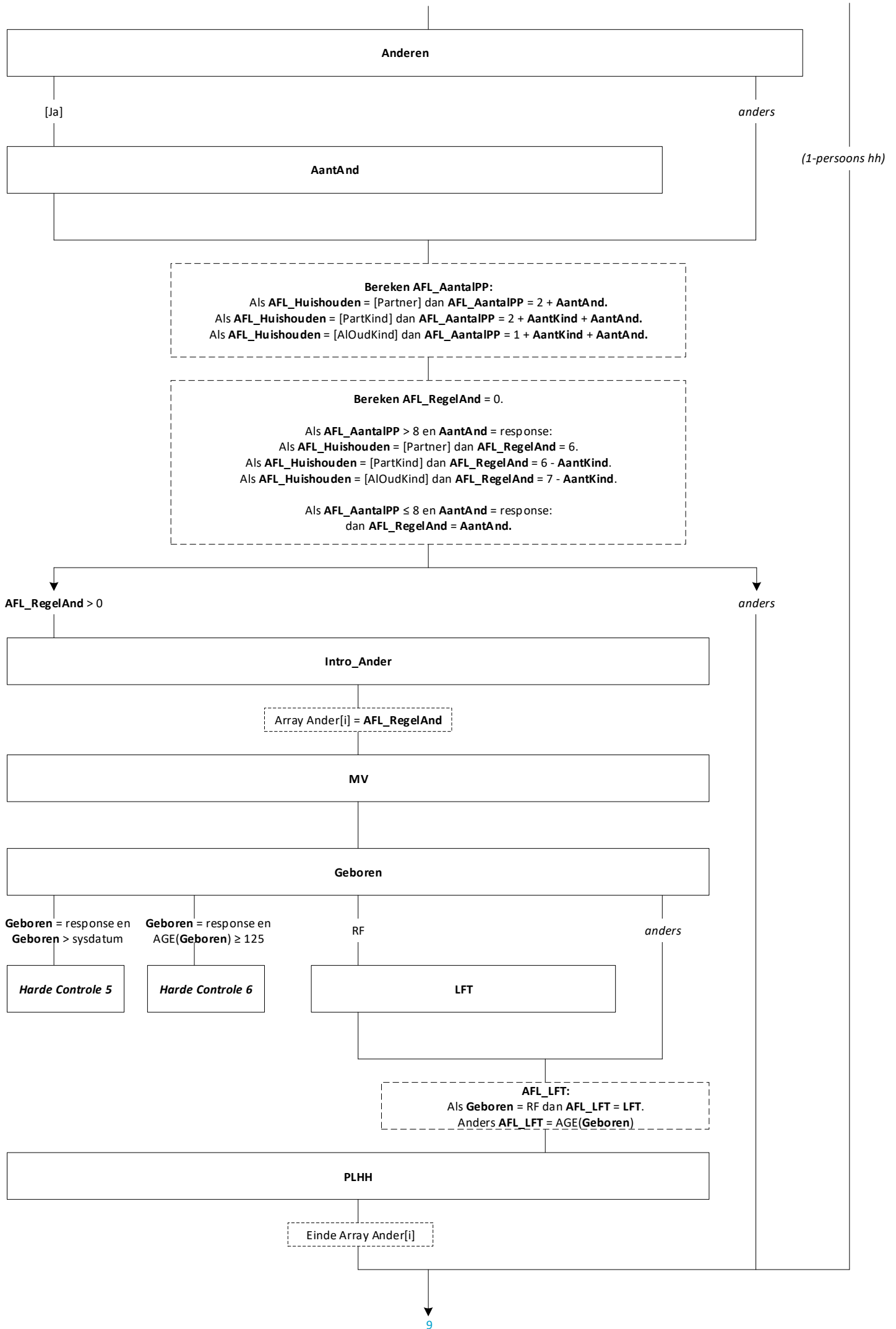




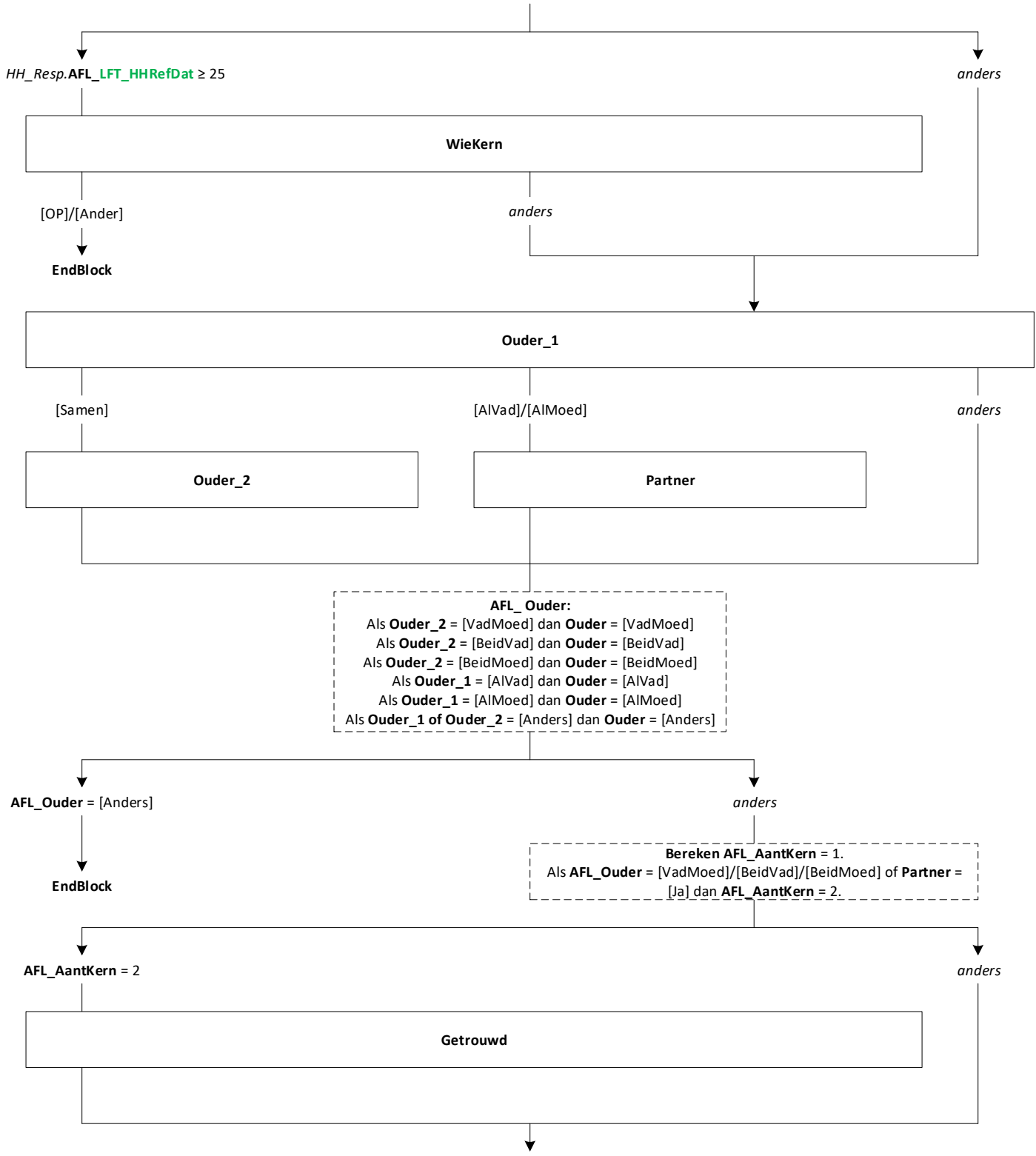


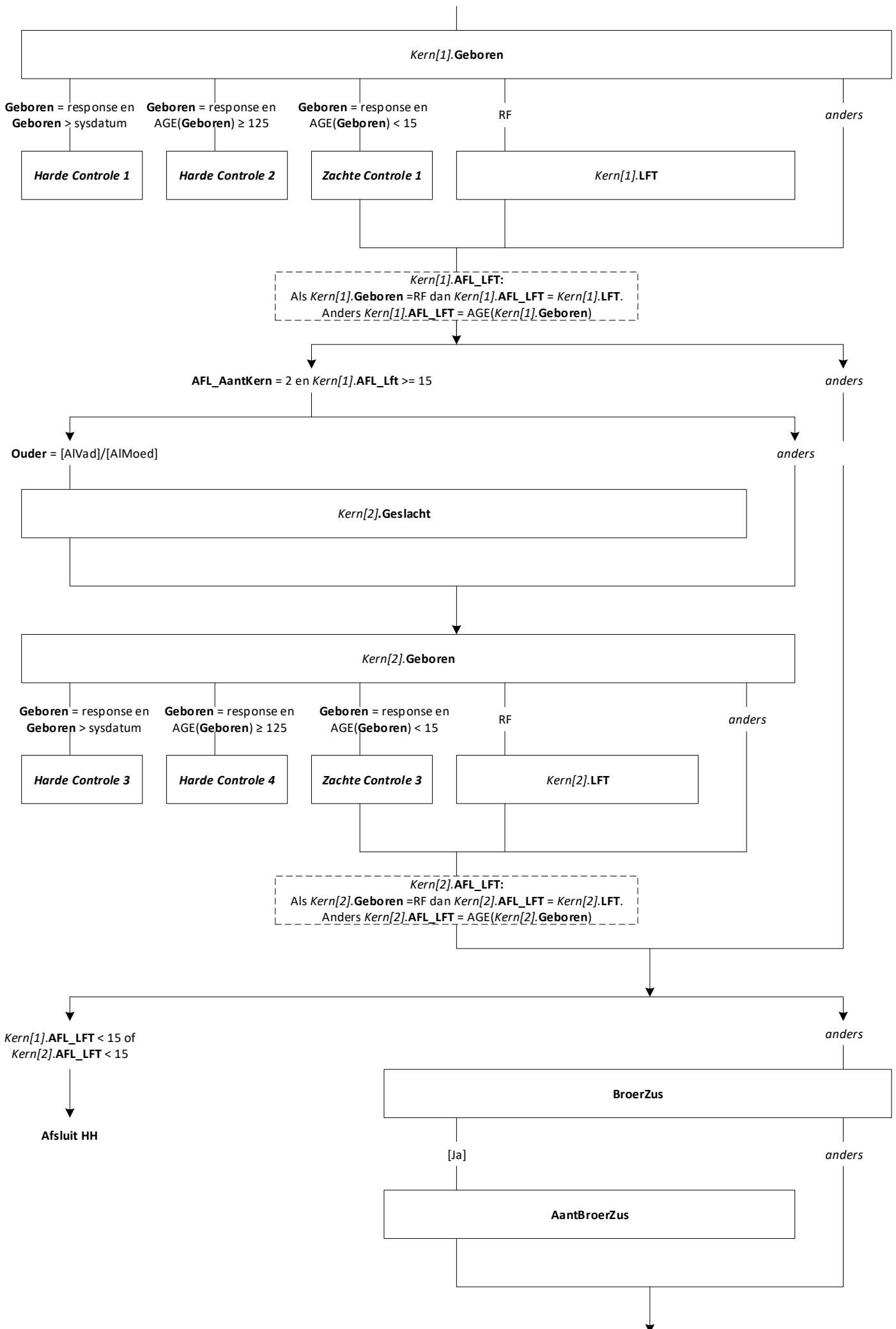


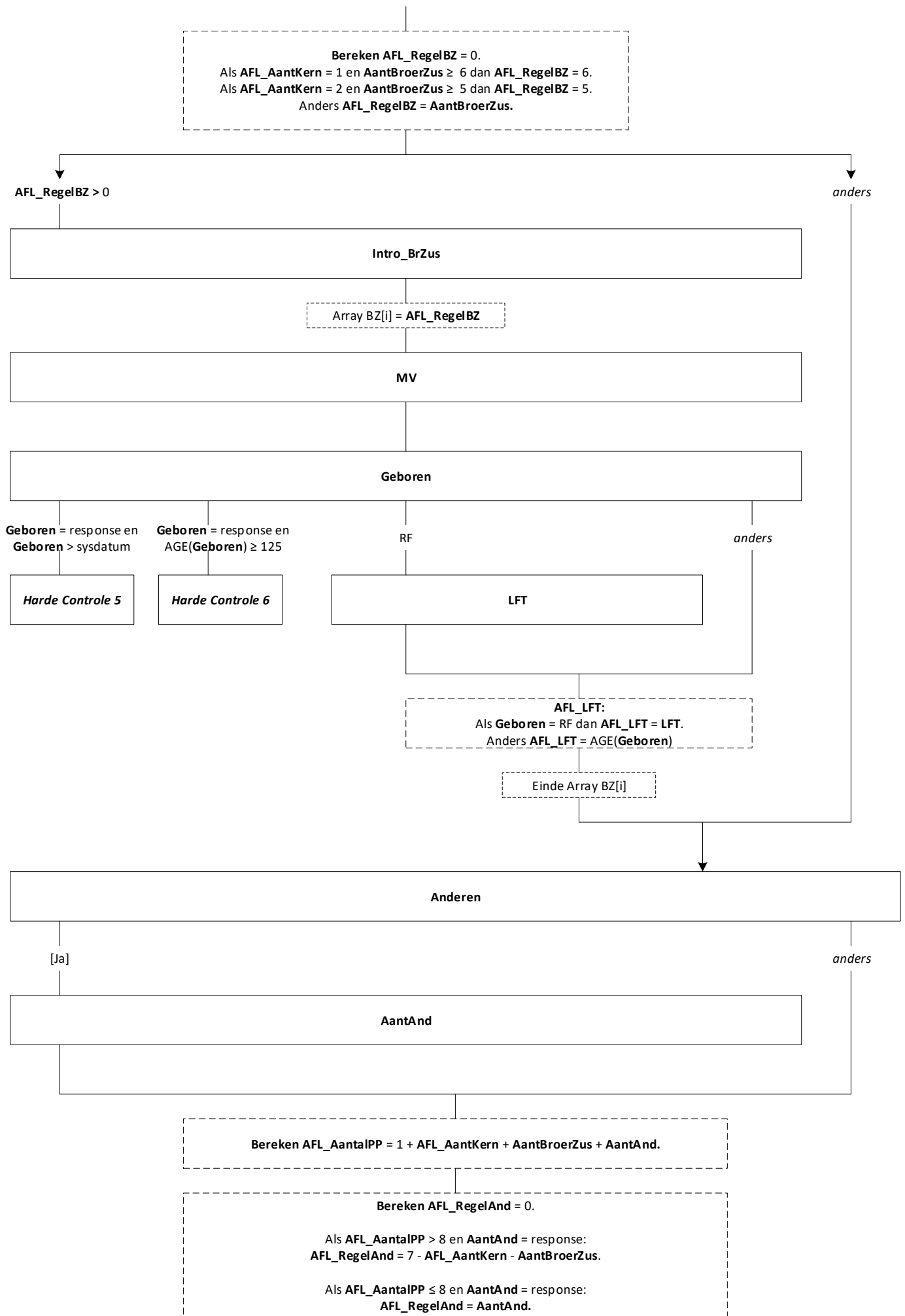


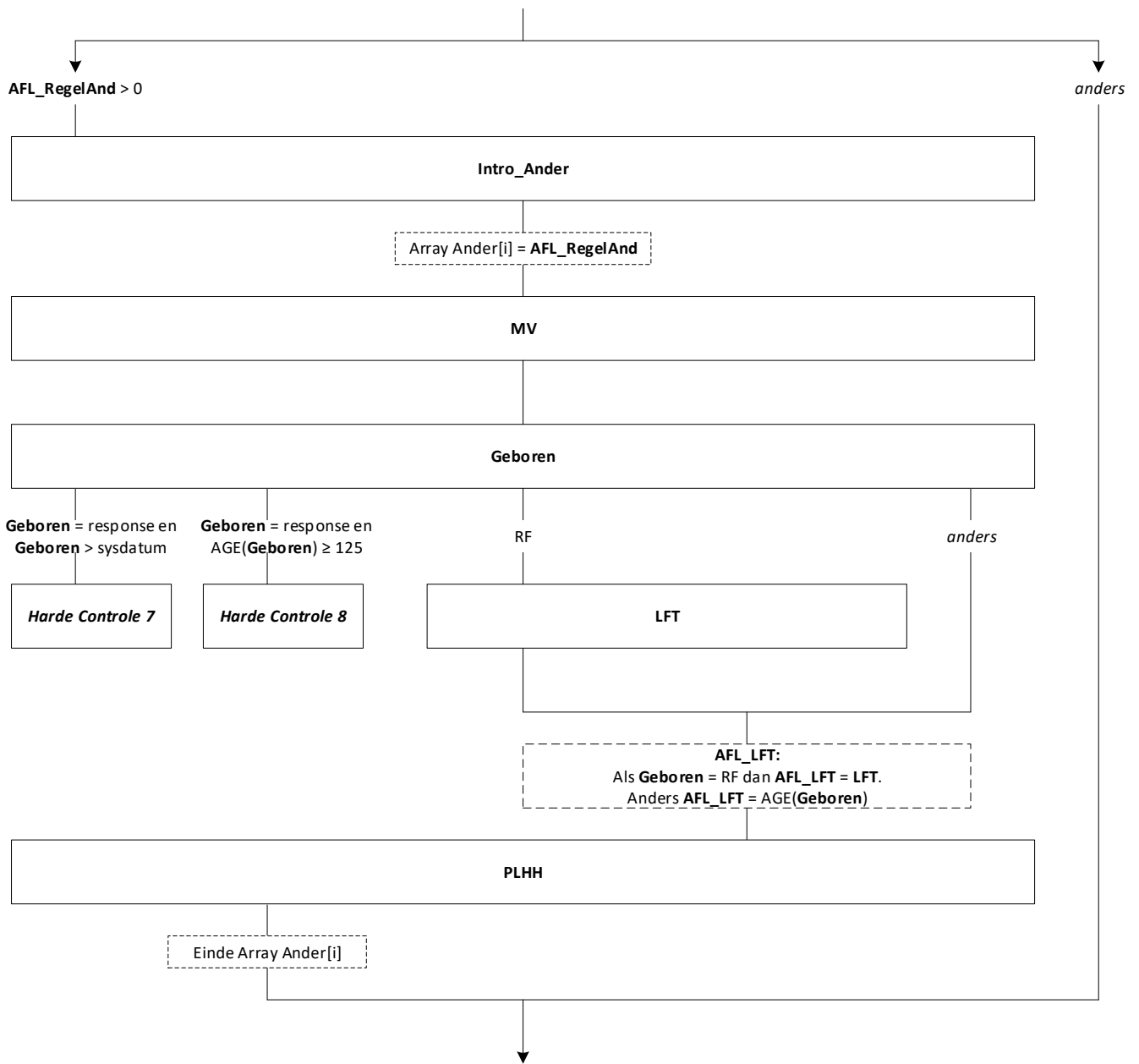












**Vul NAW\_NEW:**

Als **AFL\_AantaIPP** < 50 dan **NAW\_NEW.AantaIPP** = **AFL\_AantaIPP**.  
Als **AFL\_AantaIPP** ≥ 50 dan **NAW\_NEW.AantaIPP** = 49.

Als **AFL\_AantKern** = 2 en **Anderen** = [Ja] dan **NAW\_NEW.HHKern** = [PKindAnd].  
Als **AFL\_AantKern** = 2 en **Anderen** = [Nee] dan **NAW\_NEW.HHKern** = [PartKind].  
Als **AFL\_AantKern** = 1 en **Anderen** = [Ja] dan **NAW\_NEW.HHKern** = [EOKndAnd].  
Als **AFL\_AantKern** = 1 en **Anderen** = [Nee] dan **NAW\_NEW.HHKern** = [EOudKind].

**NAW\_NEW.Regel[1] (= ouder 1):**

Als **Ouder** = [VadMoed]/[BeidVad]/[AlVad] dan **M\_V** = [Man]  
Anders **M\_V** = [Vrouw]  
**Geboren** = **Kern[1].Geboren**  
**Lft** = **Kern[1].AFL\_LFT**  
**OP** = empty

Als **Getrouwd** = [Gehuwd]/[RegPartn] dan **PLHH** = [EchtGen]  
Als **Getrouwd** = [Ongehuwd] dan **PLHH** = [Partner]  
Anders **PLHH** = [K1\_noAll]

**NAW\_NEW.Regel[2] (= ouder 2 of partner):**

*\*Als AFL\_AantKern = 2 dan komt hier de andere ouder / partner.*

Als **Ouder** = [VadMoed]/[BeidMoed] of **Kern[2].Geslacht** = [Vrouw] dan **M\_V** = [Vrouw]  
Als **Kern[2].Geslacht** = [Overig] dan **M\_V** = [Overig]  
Anders en **AFL\_AantKern** = 2 dan **M\_V** = [Man]  
**Geboren** = **Kern[2].Geboren**  
**Lft** = **Kern[2].AFL\_LFT**  
**OP** = empty

Als **Getrouwd** = [Gehuwd]/[RegPartn] dan **PLHH** = [EchtGen]  
Als **Getrouwd** = [Ongehuwd] dan **PLHH** = [Partner]

**NAW\_NEW.Regel[2/3] (= OP):**

*\*Als AFL\_AantKern = 2 dan staat de OP op regel 3, anders op regel 2.*

**M\_V** = **HH\_Resp.MV**  
**Geboren** = **HH\_Resp.Geboren**  
**Lft** = **HH\_Resp.AFL\_LFT**  
**OP** = [HierOP]  
**PLHH** = [Kind]

**NAW\_NEW.Regel[3/4..x] = AFL\_RegelBZ**

*\*Als AFL\_AantKern = 2 dan starten de overige kinderen op regel 4, anders op regel 3.*

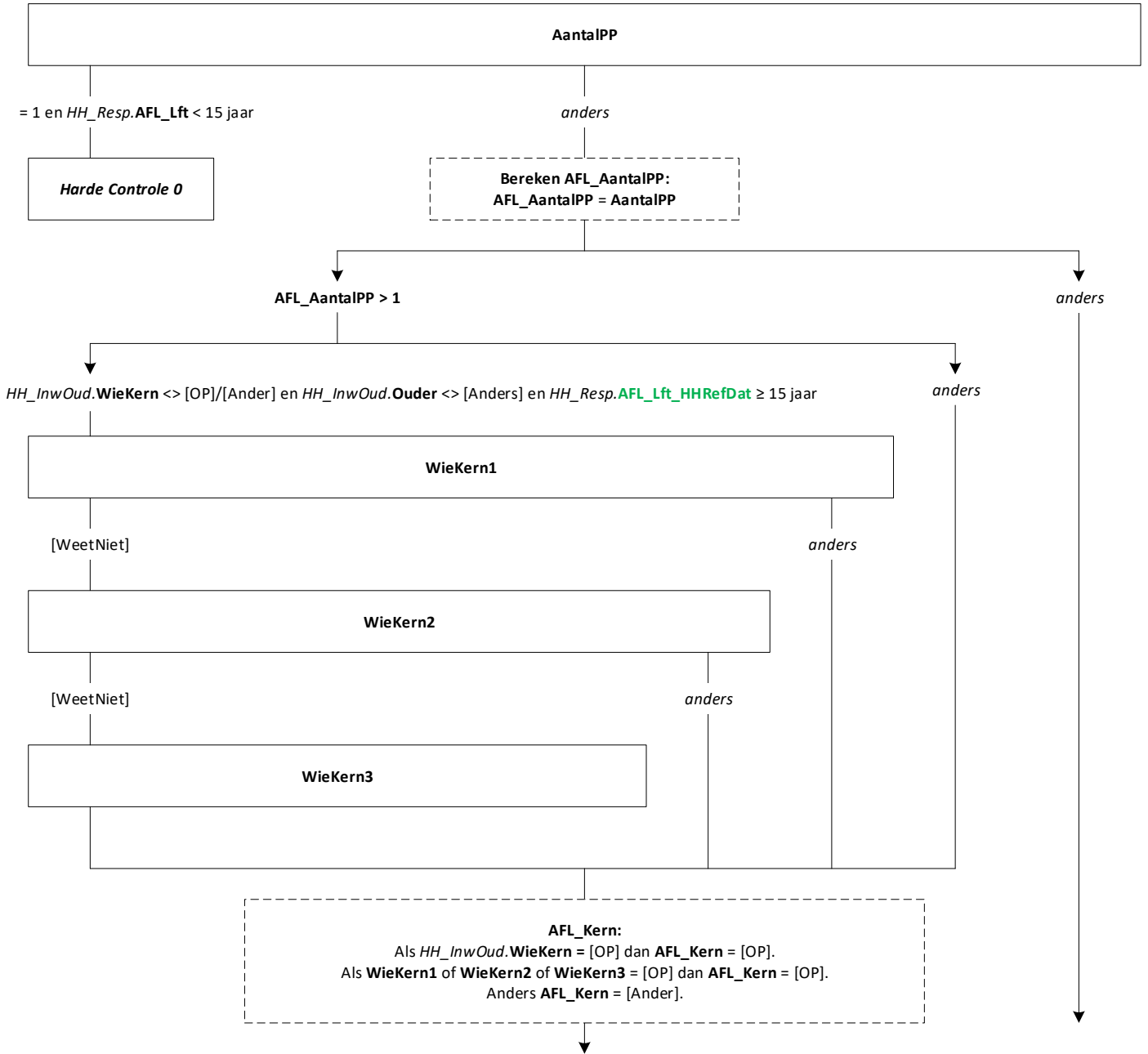
**M\_V** = **BZ[i].MV**  
**Geboren** = **BZ[i].Geboren**  
**Lft** = **BZ[i].AFL\_LFT**  
**OP** = empty  
**PLHH** = [Kind]

**NAW\_NEW.Regel[x..8] = AFL\_RegelAnd**

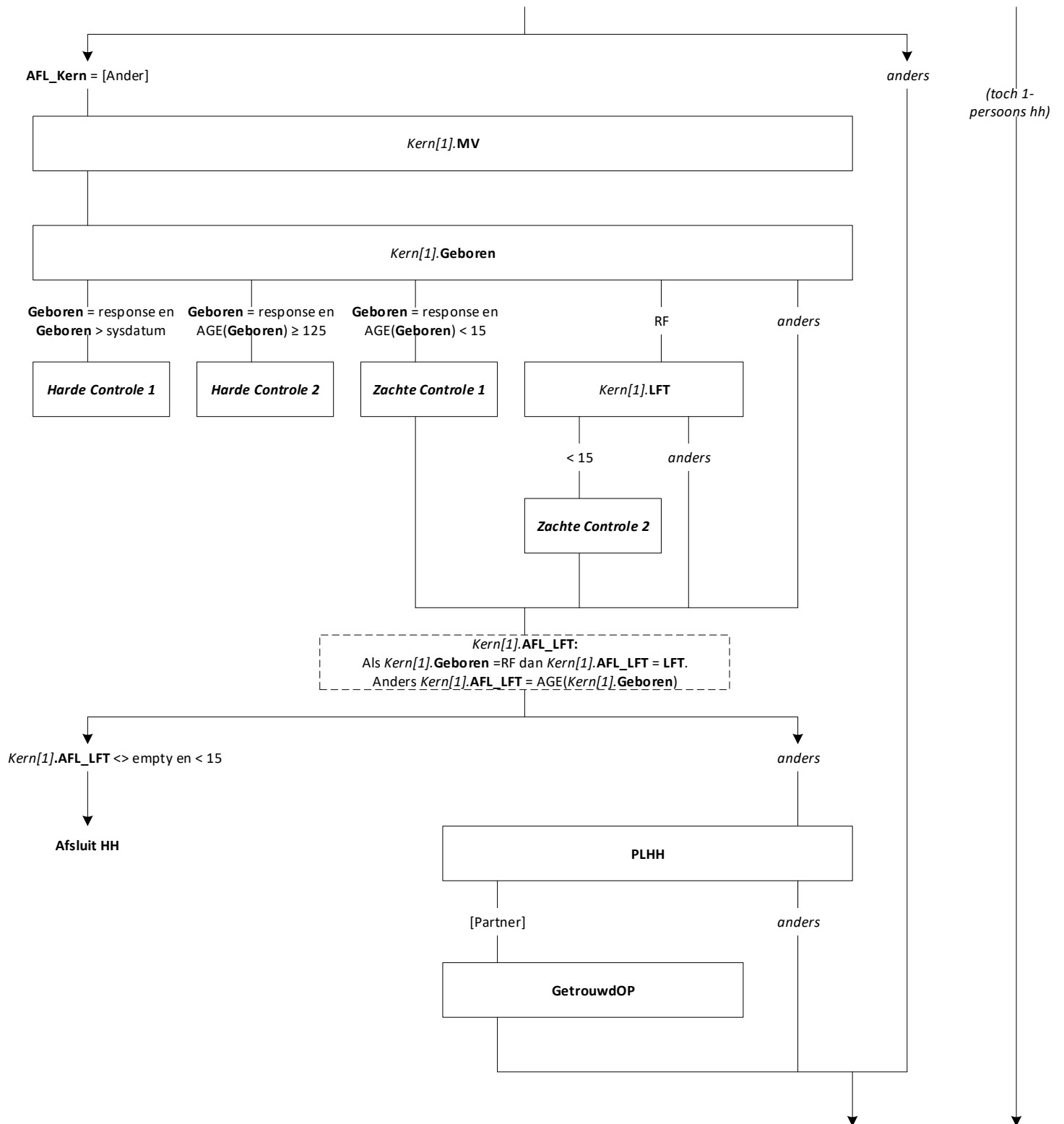
*\*De resterende regels (max. 8) worden gevuld met de andere personen in het huishouden.*

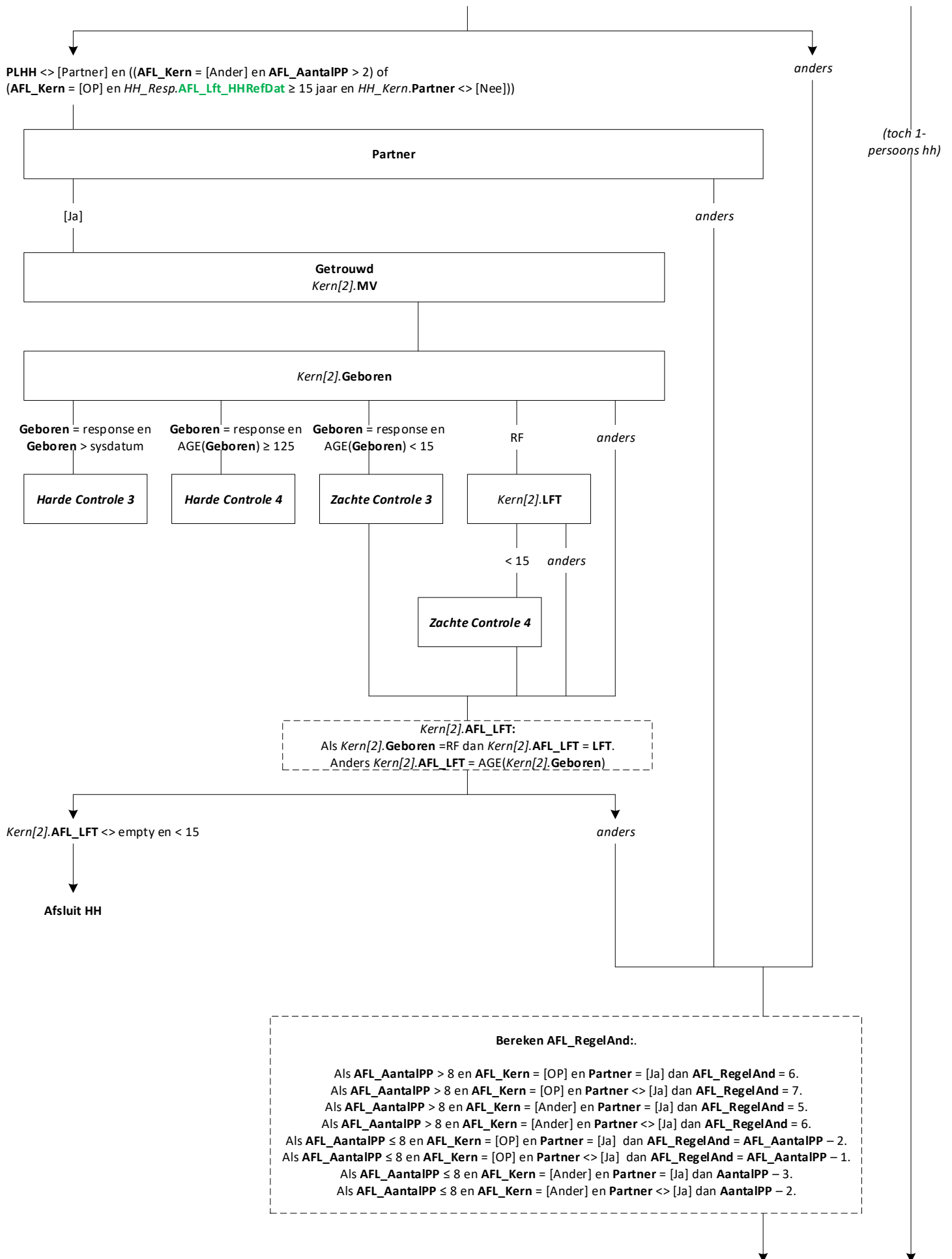
**M\_V** = **Ander[i].MV**  
**Geboren** = **Ander[i].Geboren**  
**Lft** = **Ander[i].AFL\_LFT**  
**OP** = empty  
**PLHH** = **Ander[i].PLHH**

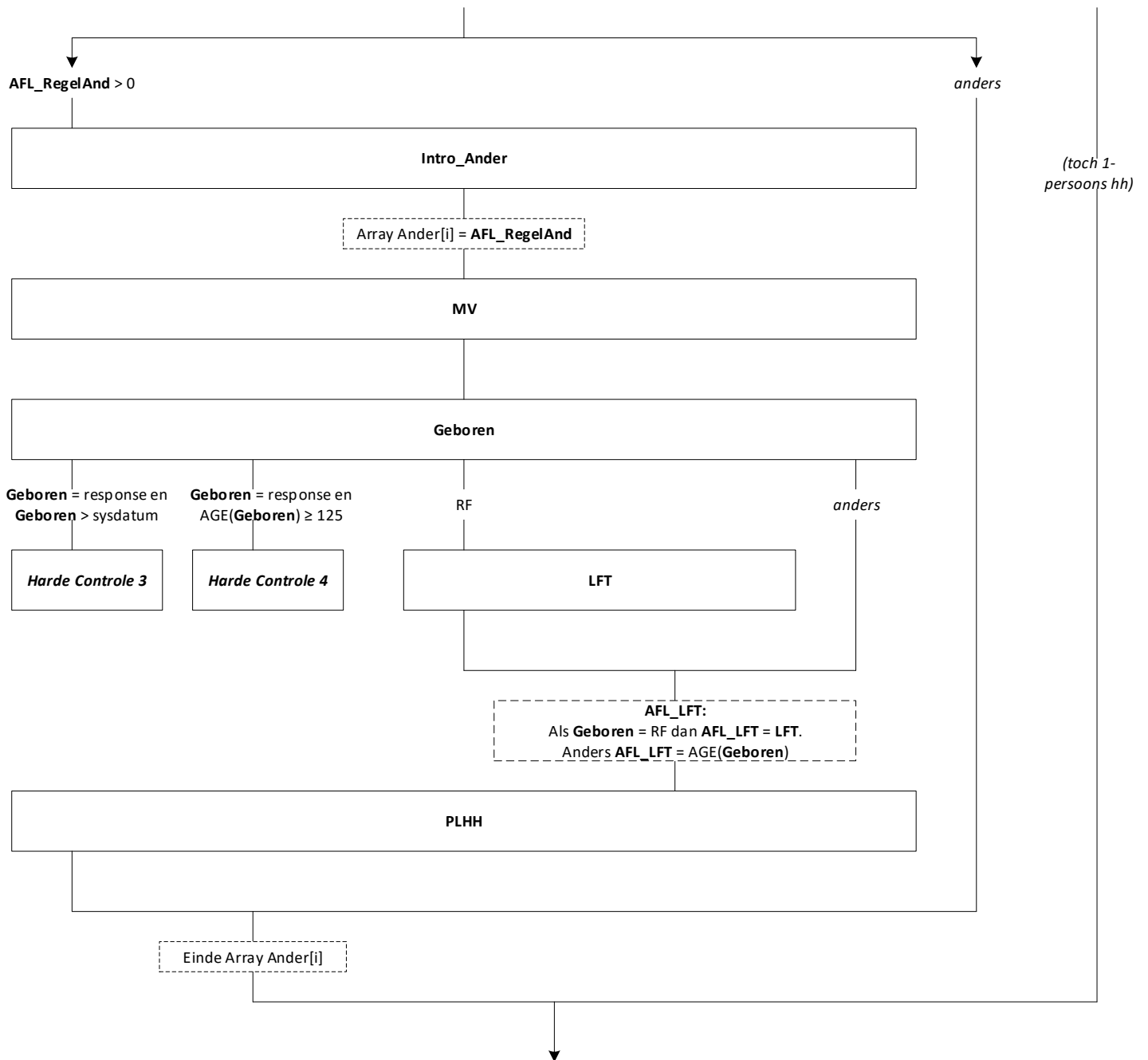
EndBlock











Vul NAW\_NEW:

NAW\_NEW.AantalPP = AFL\_AantalPP.

NAW\_NEW.Regel[1] (= Kern 1):

Als AFL\_Kern = [OP] of AFL\_AantalPP = 1 dan:

M\_V = HH\_Resp.MV  
Geboren = HH\_Resp.Geboren  
Lft = HH\_Resp.AFL\_LFT  
OP = [HierOP]

Als AFL\_Kern = [Ander] dan:

M\_V = Kern[1].MV  
Geboren = Kern[1].Geboren  
Lft = Kern[1].AFL\_LFT  
OP = empty

Als GetrouwdOP of Getrouwd = [Gehuwd]/[RegPartn] dan PLHH = [EchtGen]

Als GetrouwdOP of Getrouwd = [Ongehuwd] dan PLHH = [Partner]

Als AFL\_AantalPP = 1 dan PLHH = [Alleen]

Anders PLHH = [K1\_noAll]

NAW\_NEW.Regel[2] (= kern 2):

\*Als Partner = [Ja] of PLHH = [Partner] dan komt hier de partner van kern 1.

Als PLHH = [Partner] dan:

M\_V = HH\_Resp.MV  
Geboren = HH\_Resp.Geboren  
Lft = HH\_Resp.AFL\_LFT  
OP = [HierOP]

Als Partner = [Ja] dan:

M\_V = Kern[2].Geslacht = [Vrouw]  
Geboren = Kern[2].Geboren  
Lft = Kern[2].AFL\_LFT  
OP = empty.

Als GetrouwdOP of Getrouwd = [Gehuwd]/[RegPartn] dan PLHH = [EchtGen]

Als GetrouwdOP of Getrouwd = [Ongehuwd] dan PLHH = [Partner]

NAW\_NEW.Regel[2/3] (= OP):

\*Als AFL\_Kern = [Ander] en PLHH <> [Partner] en Partner = [Nee] dan staat de OP op regel 2.

\*Als AFL\_Kern = [Ander] en PLHH <> [Partner] en Partner = [Ja] dan staat de OP op regel 3.

\* In alle andere gevallen is de OP al aan bod geweest.

M\_V = HH\_Resp.MV  
Geboren = HH\_Resp.Geboren  
Lft = HH\_Resp.AFL\_LFT  
OP = [HierOP]  
PLHH = PLHH

NAW\_NEW.Regel[3/4..8] = AFL\_RegelAnd

\*De resterende regels (max. 8) worden gevuld met de andere personen in het huishouden.

M\_V = Ander[i].MV  
Geboren = Ander[i].Geboren  
Lft = Ander[i].AFL\_LFT  
OP = empty  
PLHH = Ander[i].PLHH

NAW\_NEW.HHKern:

Als NAW\_NEW.Regel[1].PLHH = [Echtgen]/[Partner]:

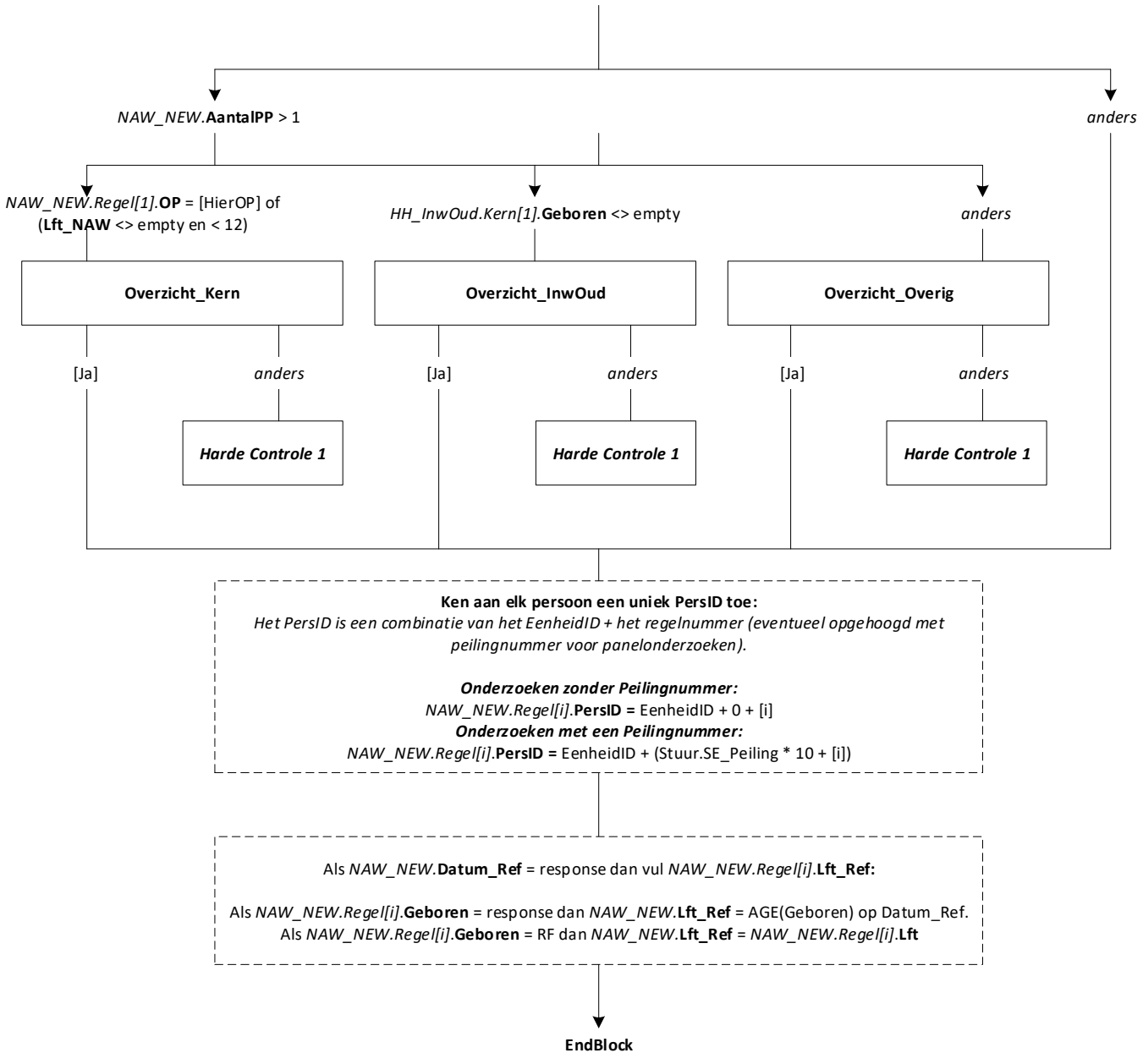
- (1) en AFL\_AantalPP = 2 dan NAW\_NEW.HHKern = [PartnAll]
- (2) en NAW\_NEW.Regel[3..8].PLHH = [Kind] en NAW\_NEW.Regel[3..8].PLHH = andere relatie\* dan NAW\_NEW.HHKern = [PKindAnd]
- (3) en NAW\_NEW.Regel[3..8].PLHH = [Kind] en NAW\_NEW.Regel[3..8].PLHH <> andere relatie\* dan NAW\_NEW.HHKern = [PartKind]
- (4) en NAW\_NEW.Regel[3 t/m 8].PLHH <> [Kind] en NAW\_NEW.Regel[3..8].PLHH = andere relatie\* dan NAW\_NEW.HHKern = [PartnAnd]

Als NAW\_NEW.Regel[1].PLHH = [K1\_noAll]:

- (1) en NAW\_NEW.Regel[2..8].PLHH = [Kind] en NAW\_NEW.Regel[3..8].PLHH = andere relatie\* dan NAW\_NEW.HHKern = [EOKndAnd]
- (2) en NAW\_NEW.Regel[2..8].PLHH = [Kind] en NAW\_NEW.Regel[3..8].PLHH <> andere relatie\* dan NAW\_NEW.HHKern = [EOudKind]
- (3) en NAW\_NEW.Regel[2 t/m 8].PLHH <> [Kind] dan NAW\_NEW.HHKern = [Overig]

↓  
EndBlock

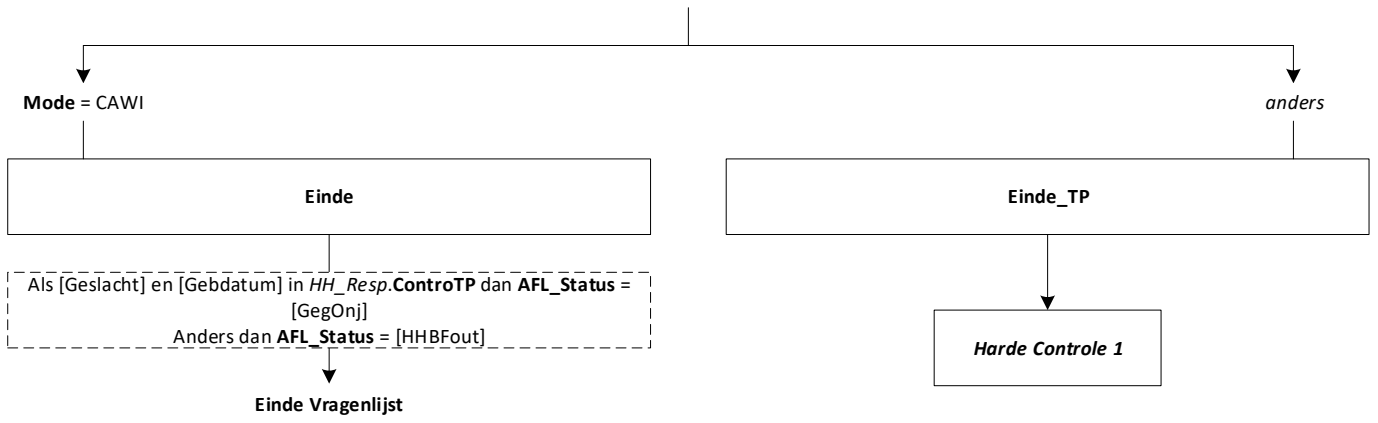
\* = [PaMa]/[SchoonPM]/[BroerZus]/[SchBrZus]/[SchZoDoc]/[KleinKnd]/[OpaOma]/[Over\_Fam]/[Overig]

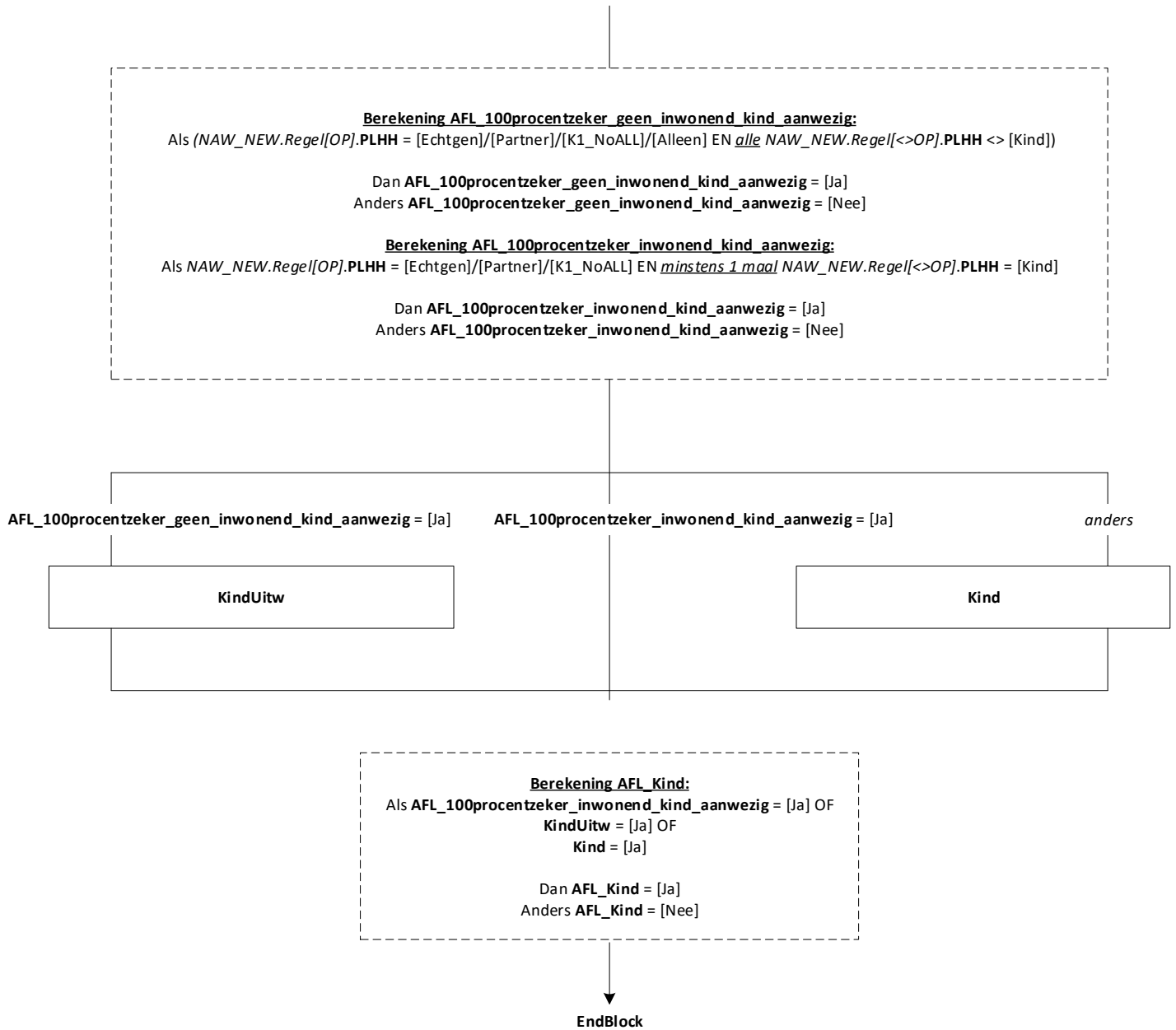




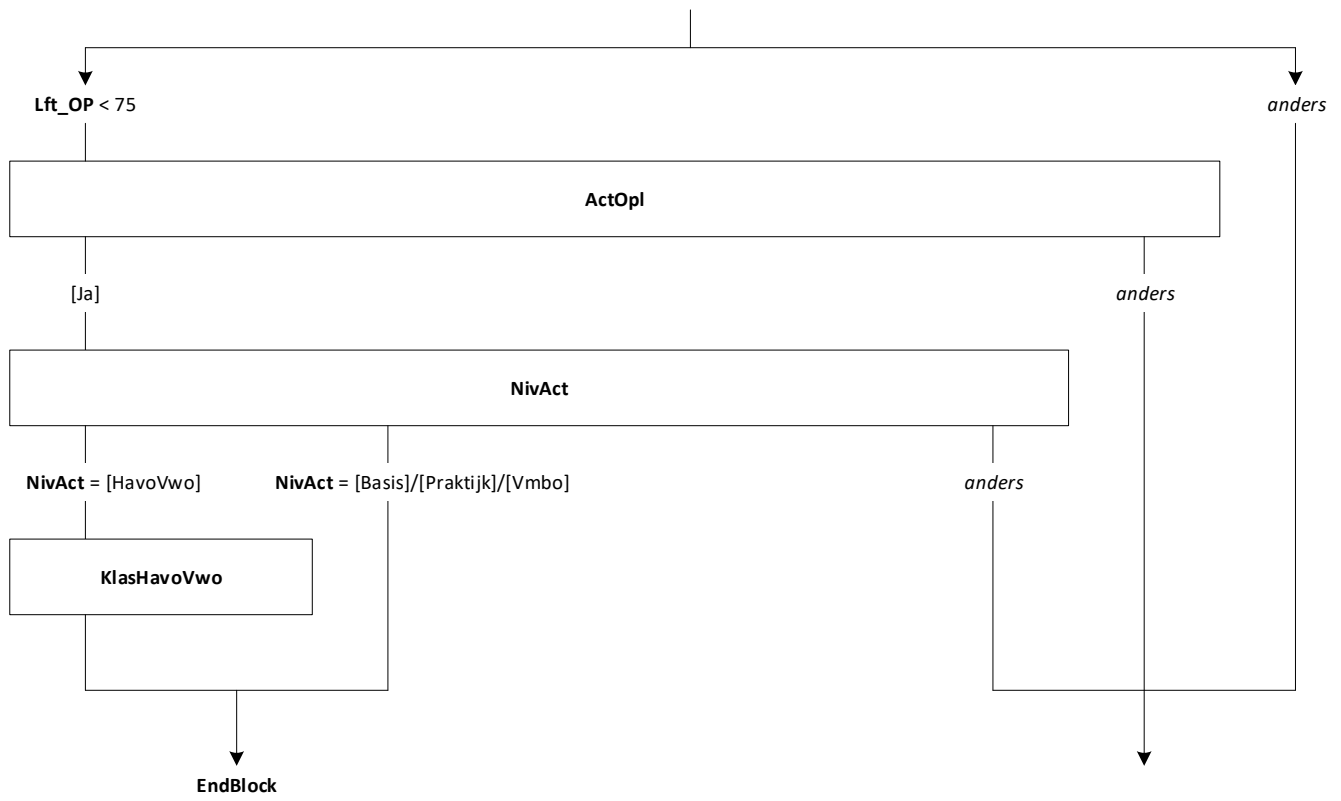
# Blok Afsluit HH [HH\_Afsluit]

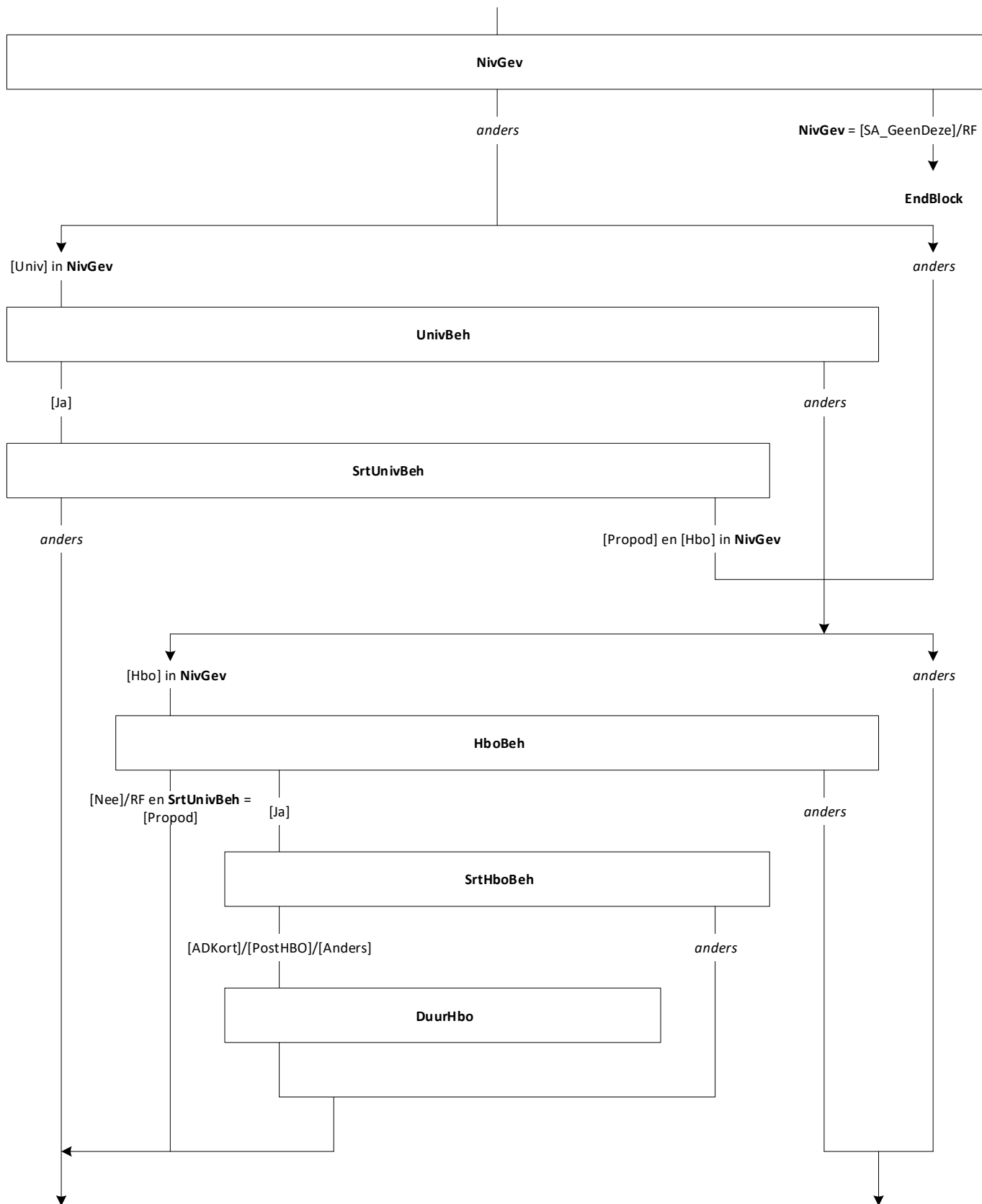
Mode = CAWI, CATI, CAPI  
Blokvoorwaarde =  $HH\_Resp.AFL\_LFT < 12$  of  
 $(HH\_InwOud.Kern[1].AFL\_Lft$  of  $HH\_InwOud.Kern[2].AFL\_Lft < 15)$  of  $(HH\_Overig.Kern[1].AFL\_Lft$   
of  $HH\_Overig.Kern[2].AFL\_Lft < 15)$  of  $([Geslacht]$  en  $[Gebdatum]$  in  $HH\_Resp.ControlTP)$   
Blokattributen = NODK, RF, NO EMPTY

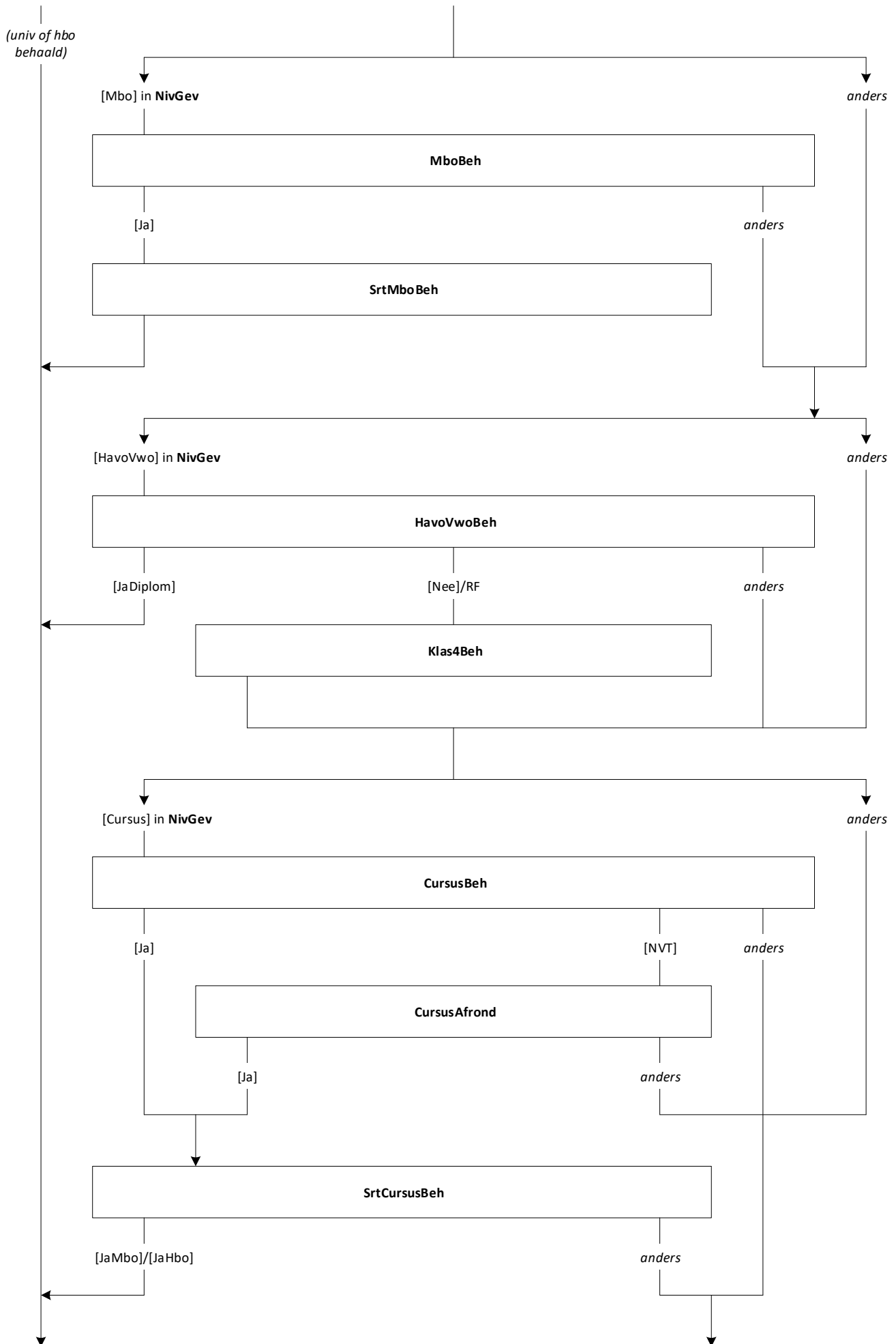


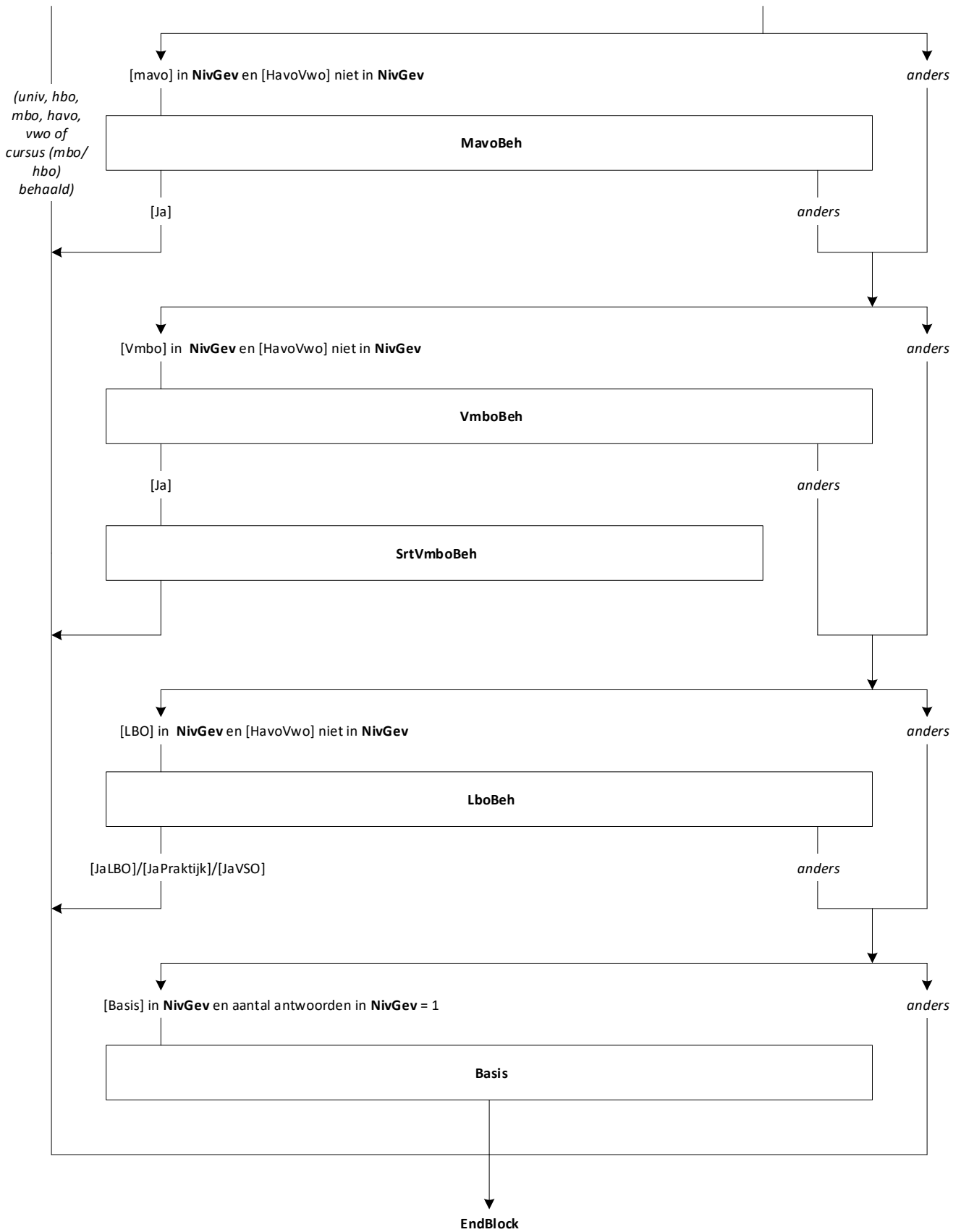


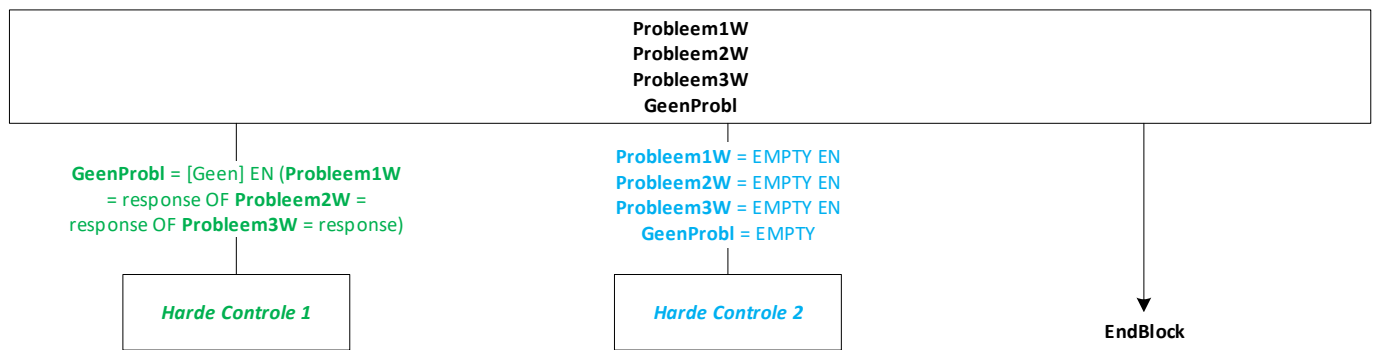


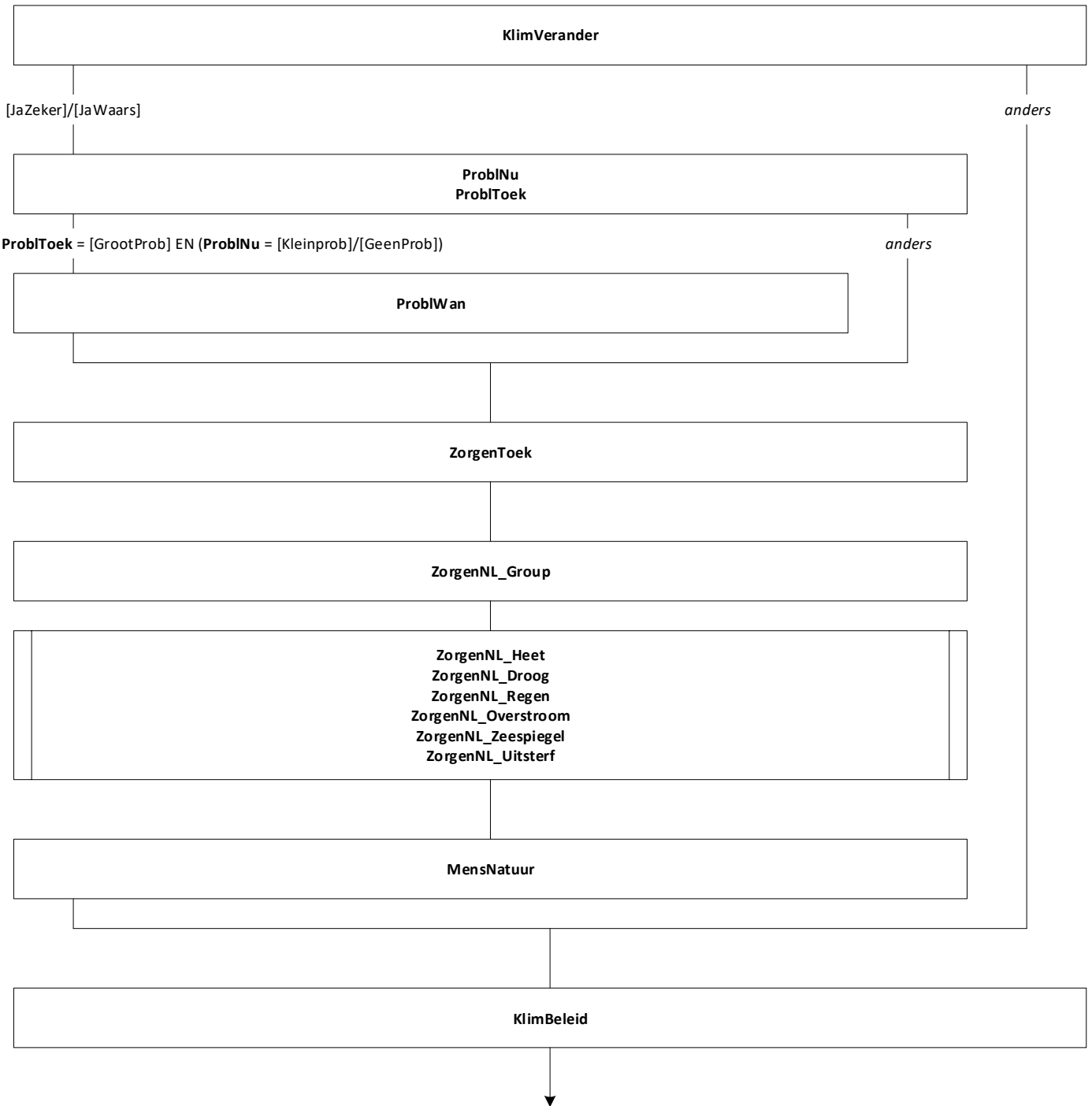


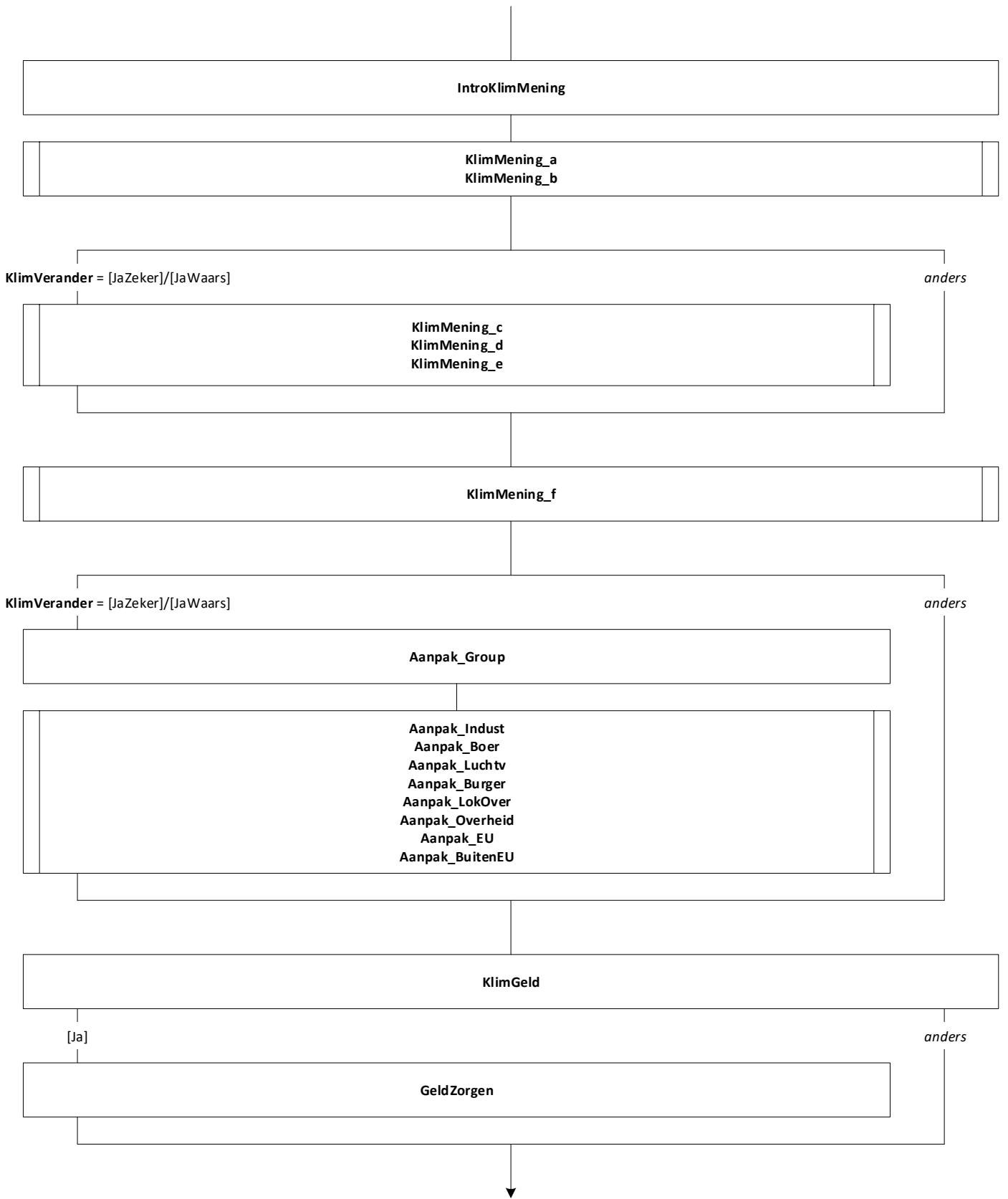












KlimBewust  
KlimBewustSchl

KlimVerander = [JaZeker]/[JaWaars]

*anders*

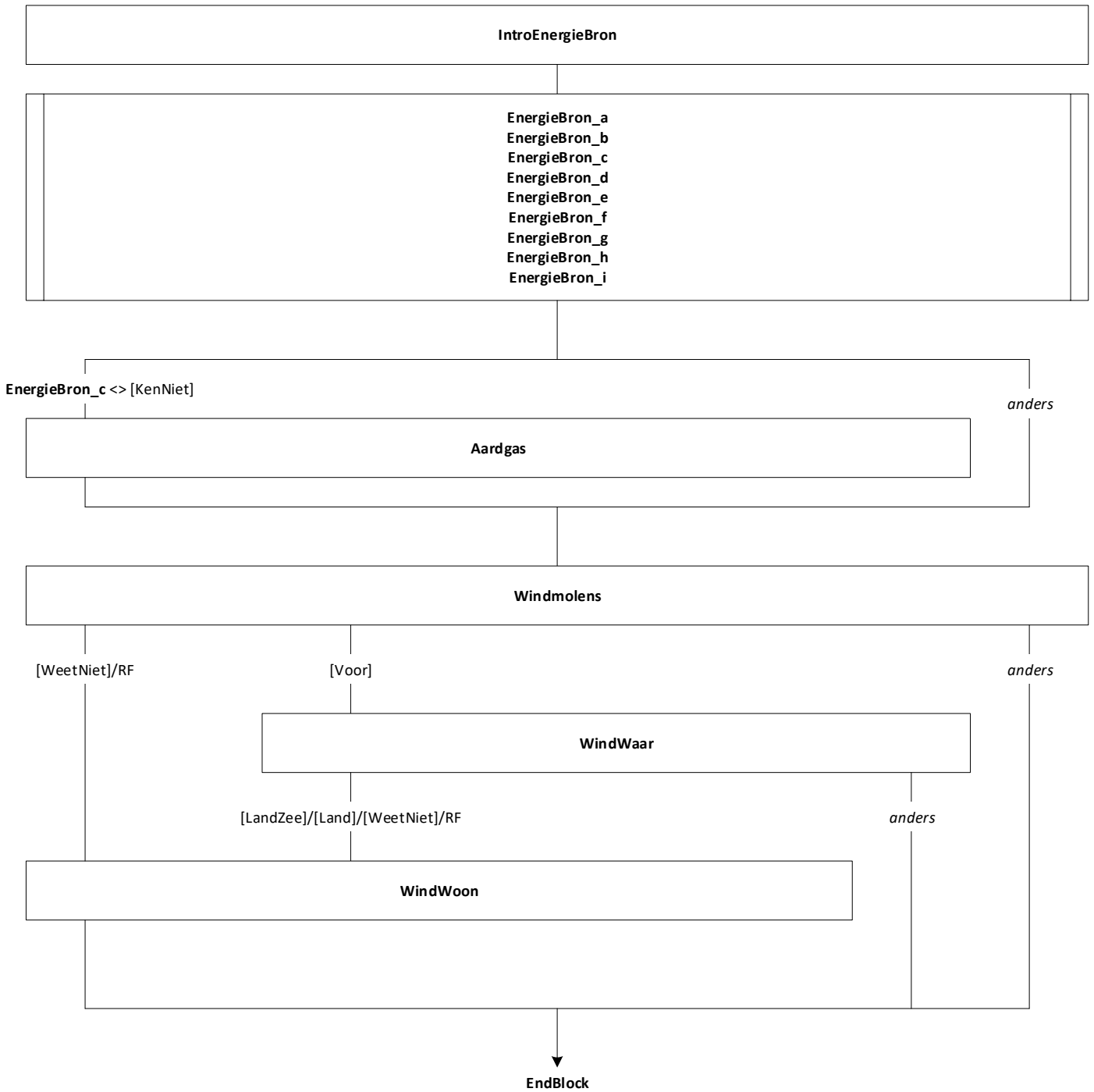
KlimTegen

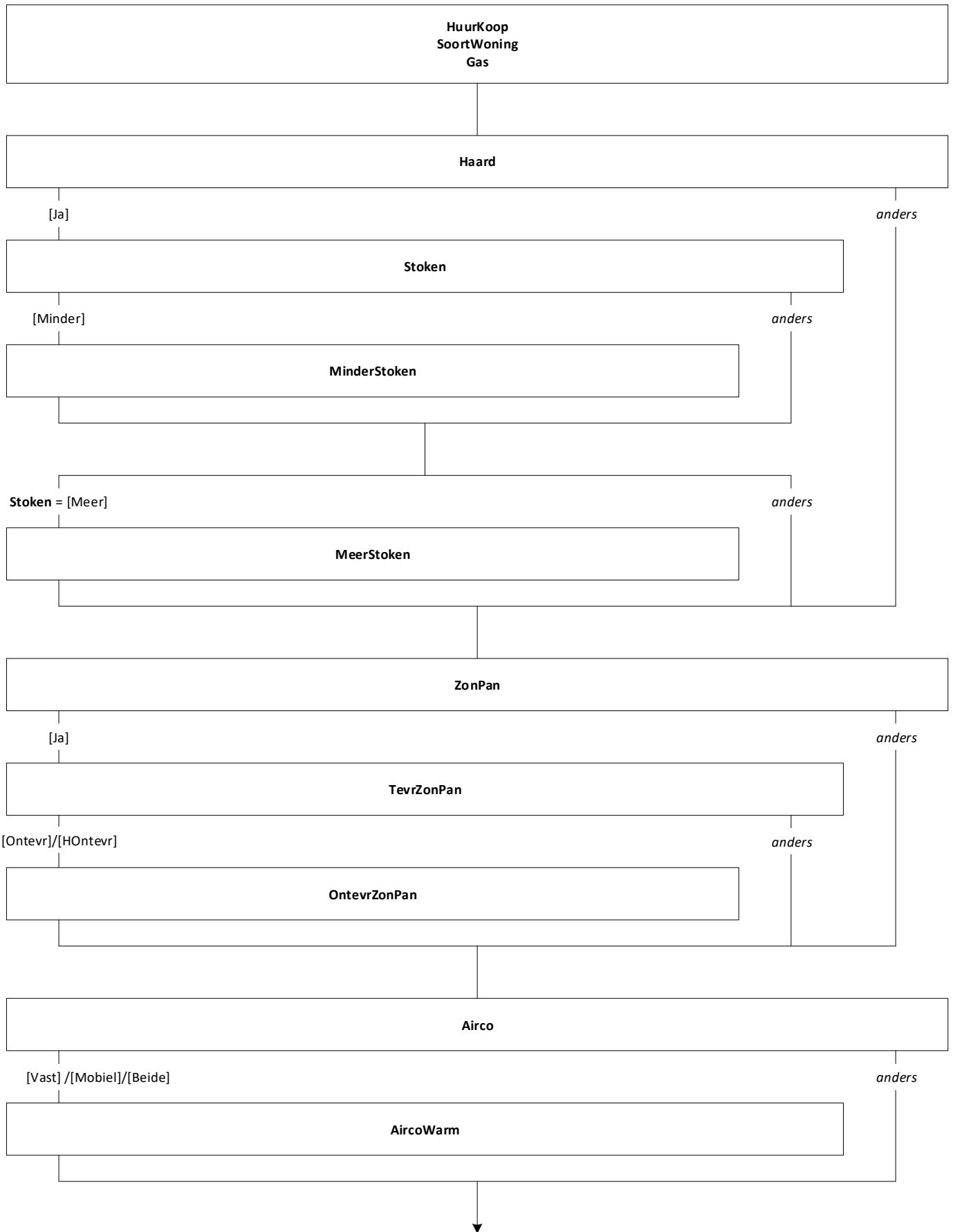
IntroKlimDoen

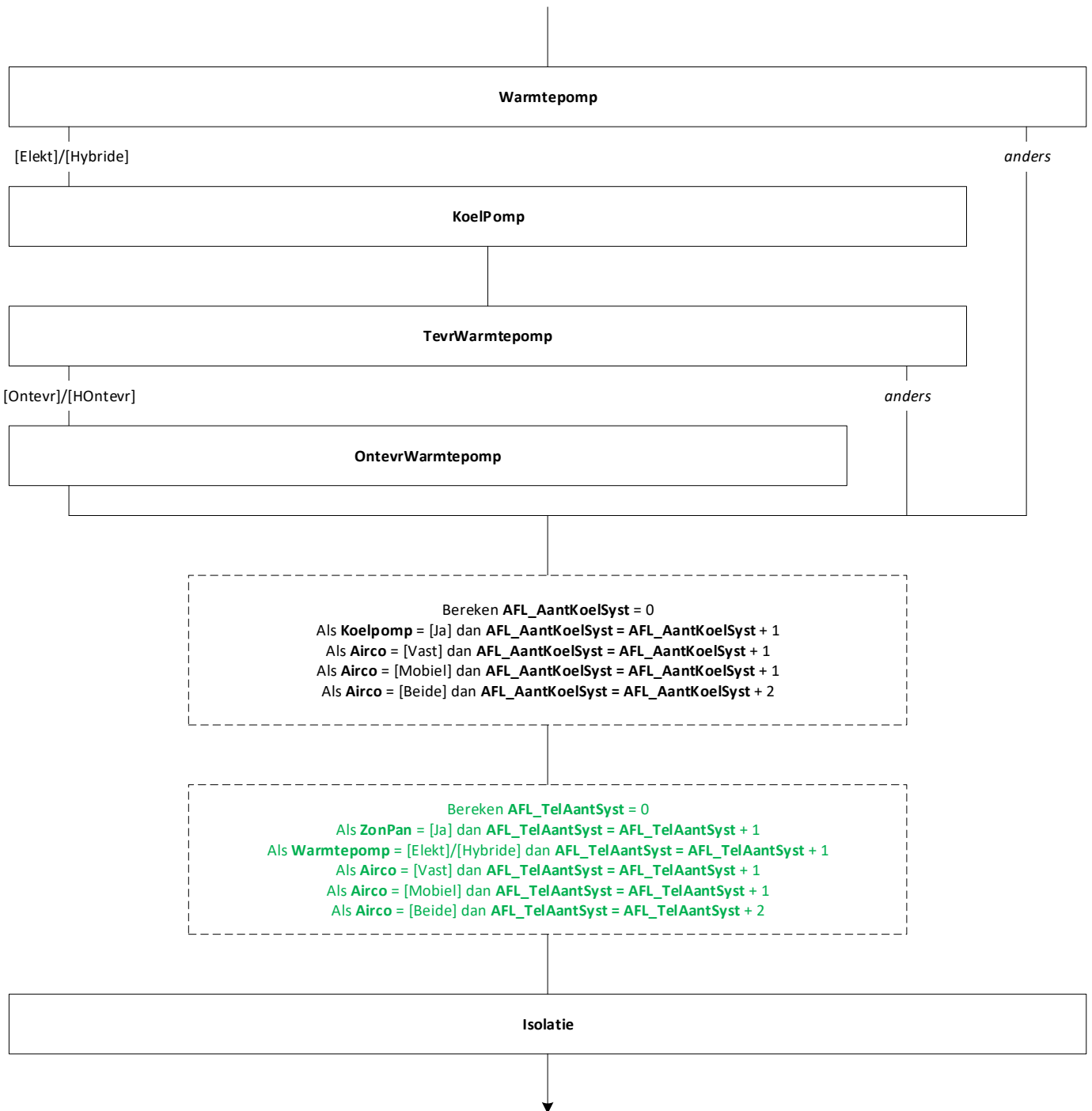
KlimDoen\_a  
KlimDoen\_b  
KlimDoen\_c  
KlimDoen\_d  
KlimDoen\_f  
KlimDoen\_g  
KlimDoen\_h

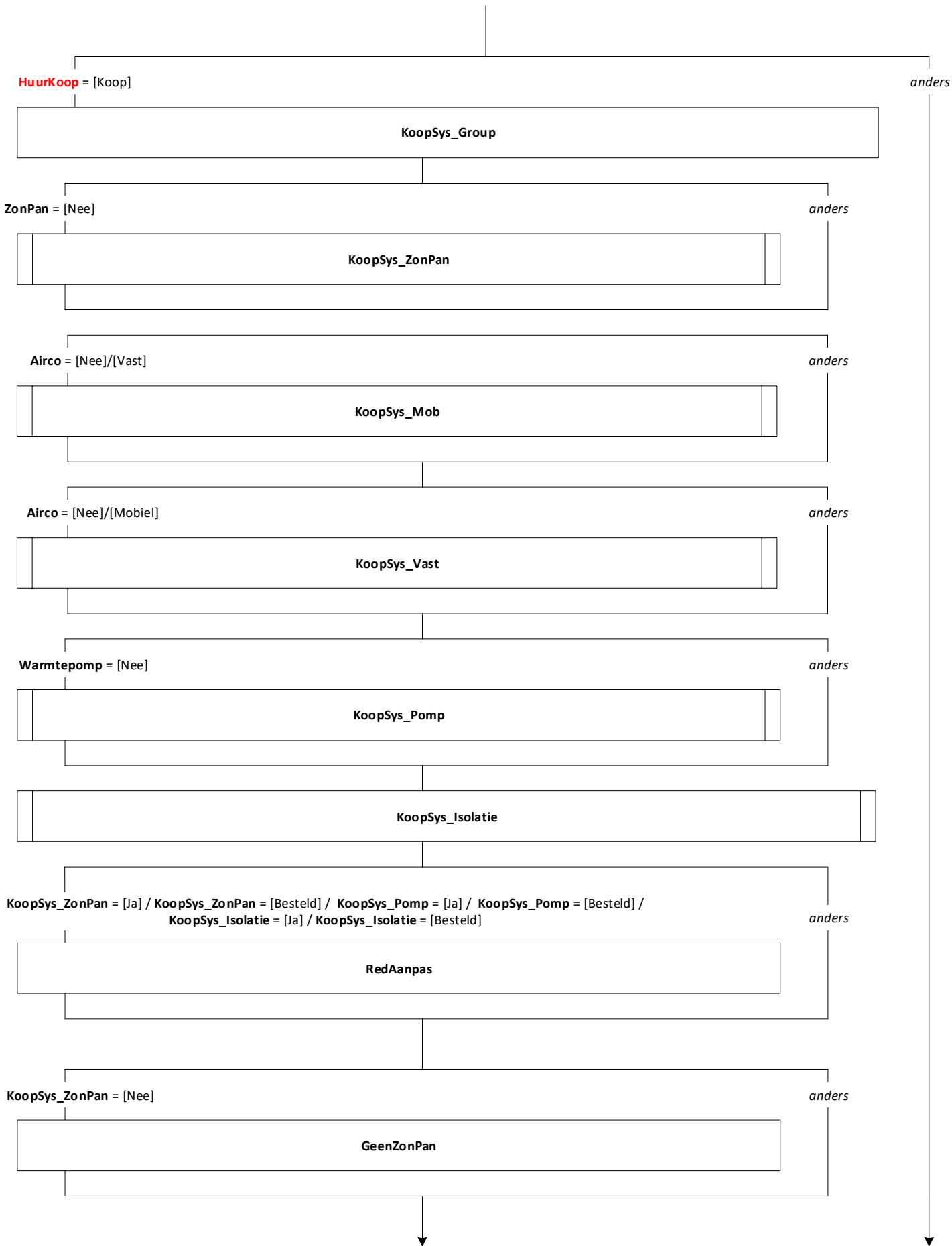
EndBlock

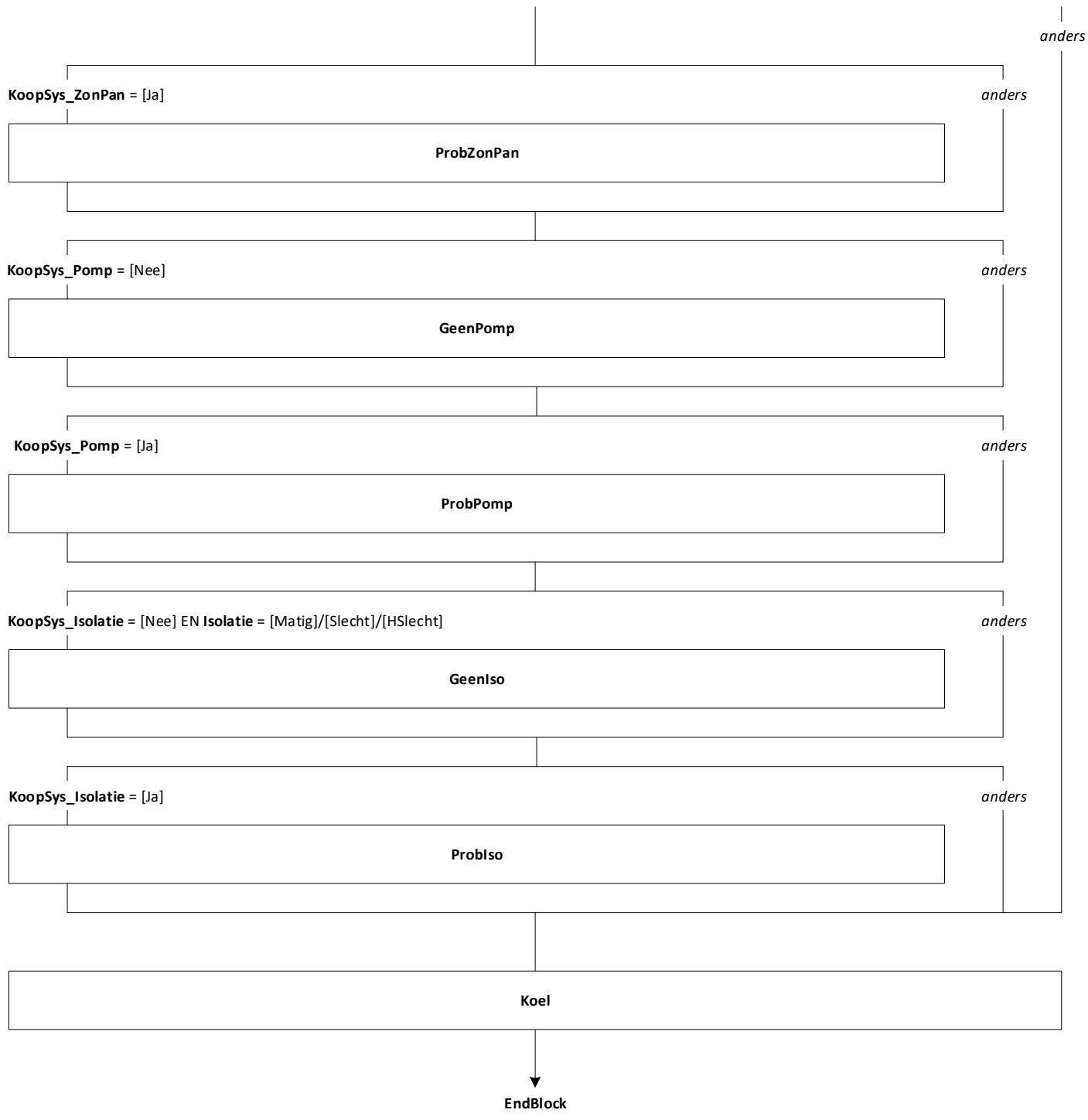


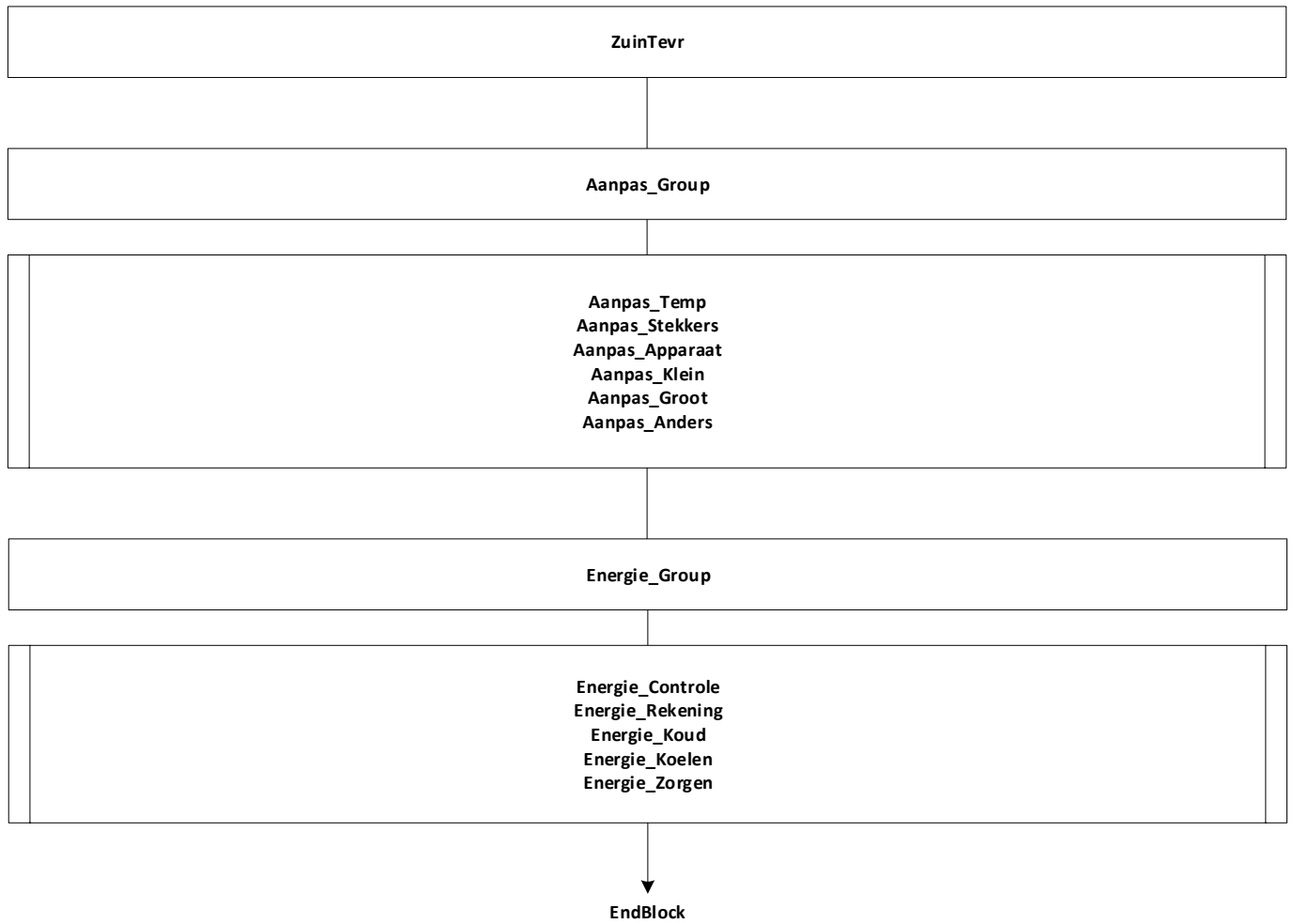








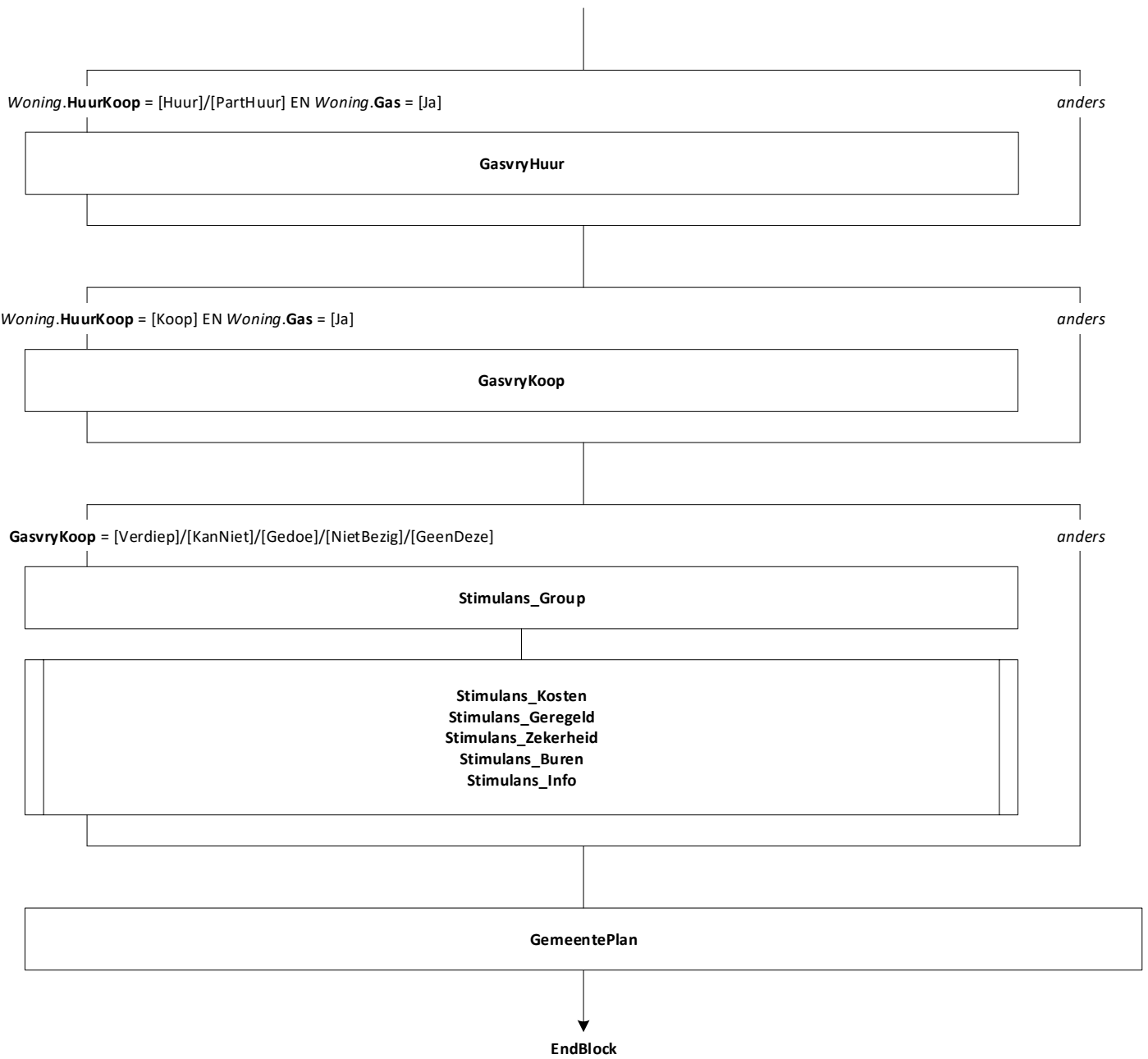






# Blok Aardgasvrij maken van woning [GasVry]

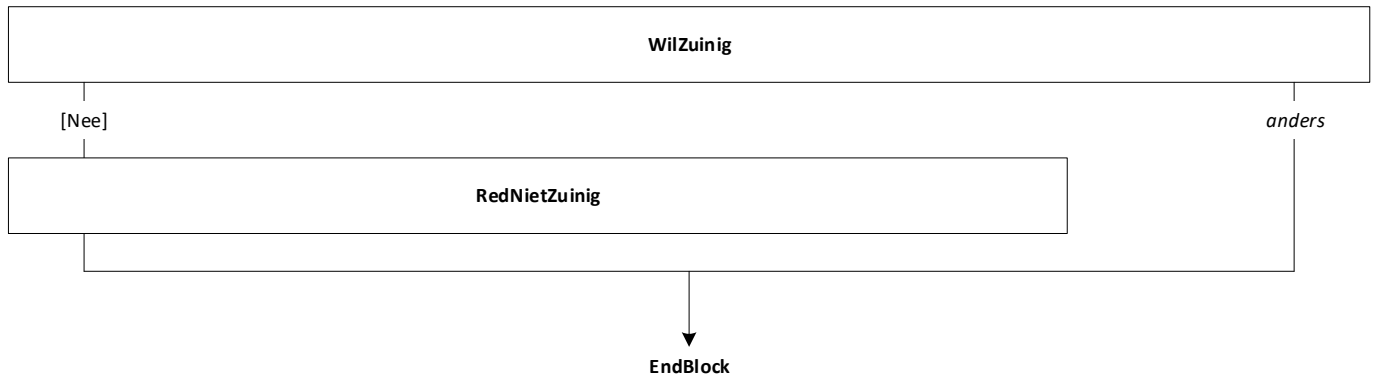
Mode = CAWI  
Blokvoorwaarde = *Main.Stuur.VariantCode* = 1 EN  
*NAW\_NEW.regel[OP].PLHH* = [Alleen]/[K1\_noAll]/  
[Echtgen]/[Partner]  
Blokattributen = NODK, RF, NO EMPTY



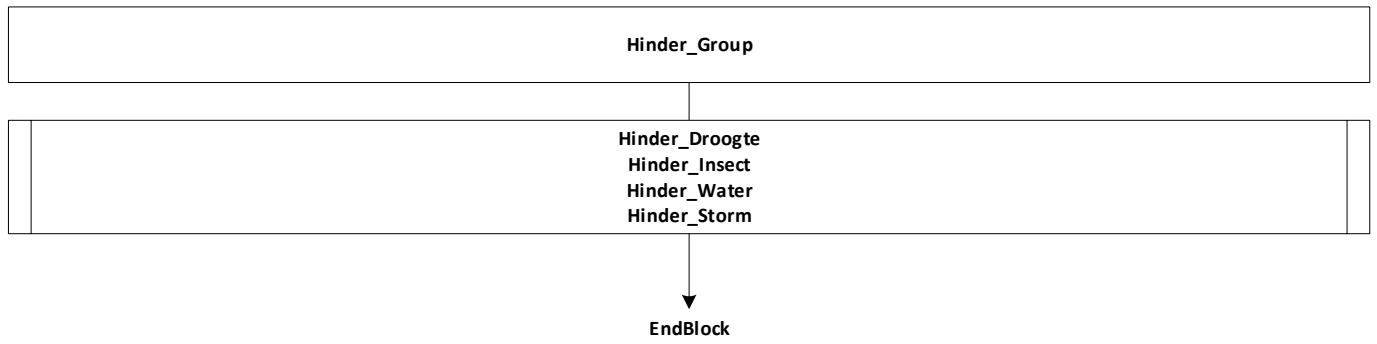


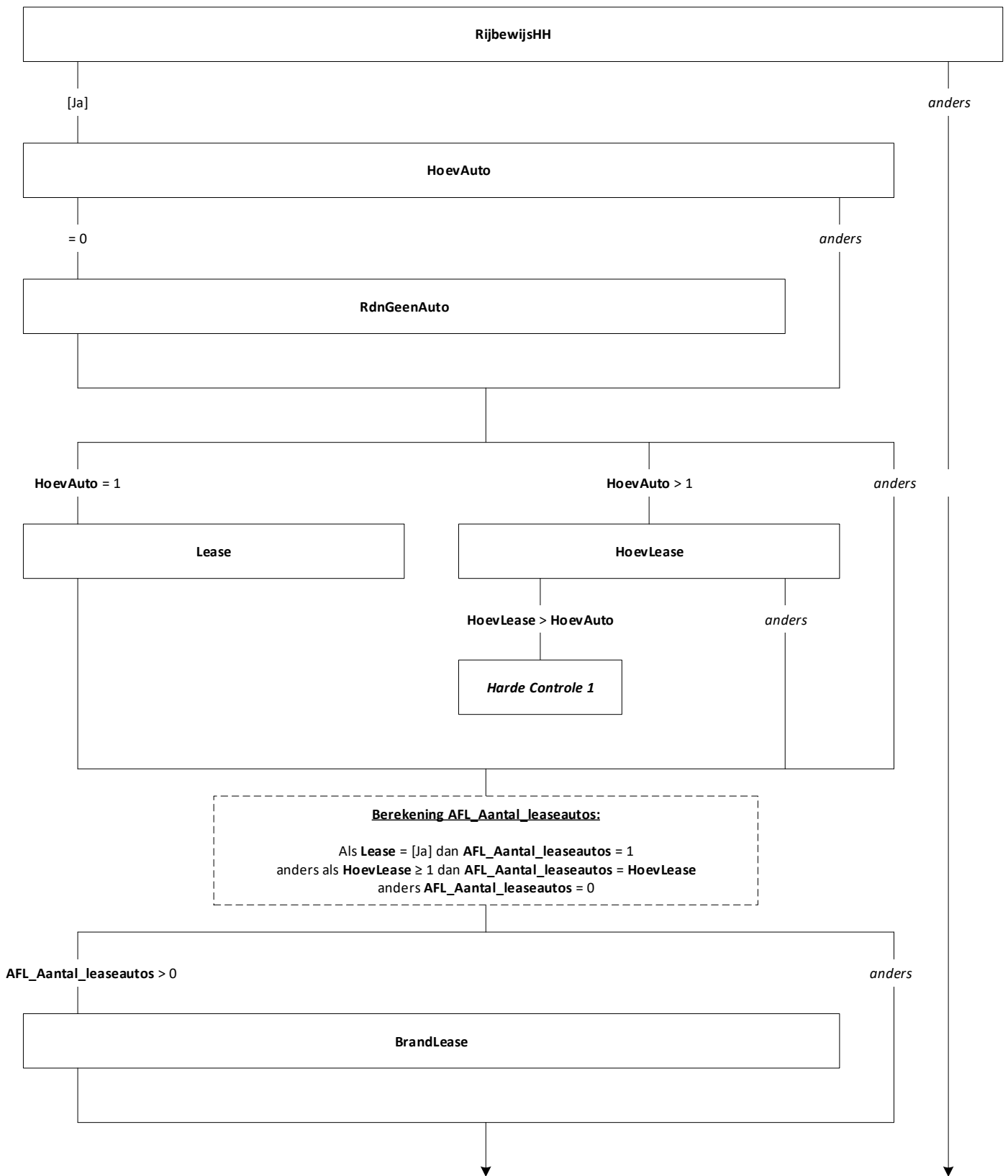
# Blok Duurzaam wonen (huur) [Huur]

Mode = CAWI  
Blokvoorwaarde = Main.Stuur.VariantCode = 1 EN  
NAW\_NEW.rege[[OP] PLHH = [Alleen]/[K1\_noAl]],[Echtgen]/[Partner]  
EN Woning.HuurKoop = [Huur]/[PartHuur]  
Blokattributen = NODK, RF, NO EMPTY









(RijbewijsHH = [Ja])

(geen  
rijbewijs  
in hh)

**Berekening AFL Aantal eigen autos:**

Als  $HoevAuto > 0$   
dan  $AFL\_Aantal\_eigen\_autos = HoevAuto - AFL\_Aantal\_leaseautos$   
anders  $AFL\_Aantal\_eigen\_autos = 0$

$AFL\_Aantal\_eigen\_autos = 1$

anders

**BrandAuto**

$AFL\_Aantal\_eigen\_autos > 1$

anders

**HoevElekAuto**

$AFL\_Aantal\_eigen\_autos > HoevElekAuto$

$HoevElekAuto > AFL\_Aantal\_eigen\_autos$

anders

**Harde Controle 2**

**HoevDeelElekAuto**

$HoevDeelElekAuto > AFL\_Aantal\_eigen\_autos$

**Harde Controle 3**

[Elektrisch] in **BrandLease** OF **BrandAuto** = [Elektrisch] OF  $HoevElekAuto > 0$

anders

**ElekRed**

Aantal antwoorden **ElekRed** > 1

anders

**ElekRedBel**



