



Centraal Bureau  
voor de Statistiek

# **AZW-panel werknemers**

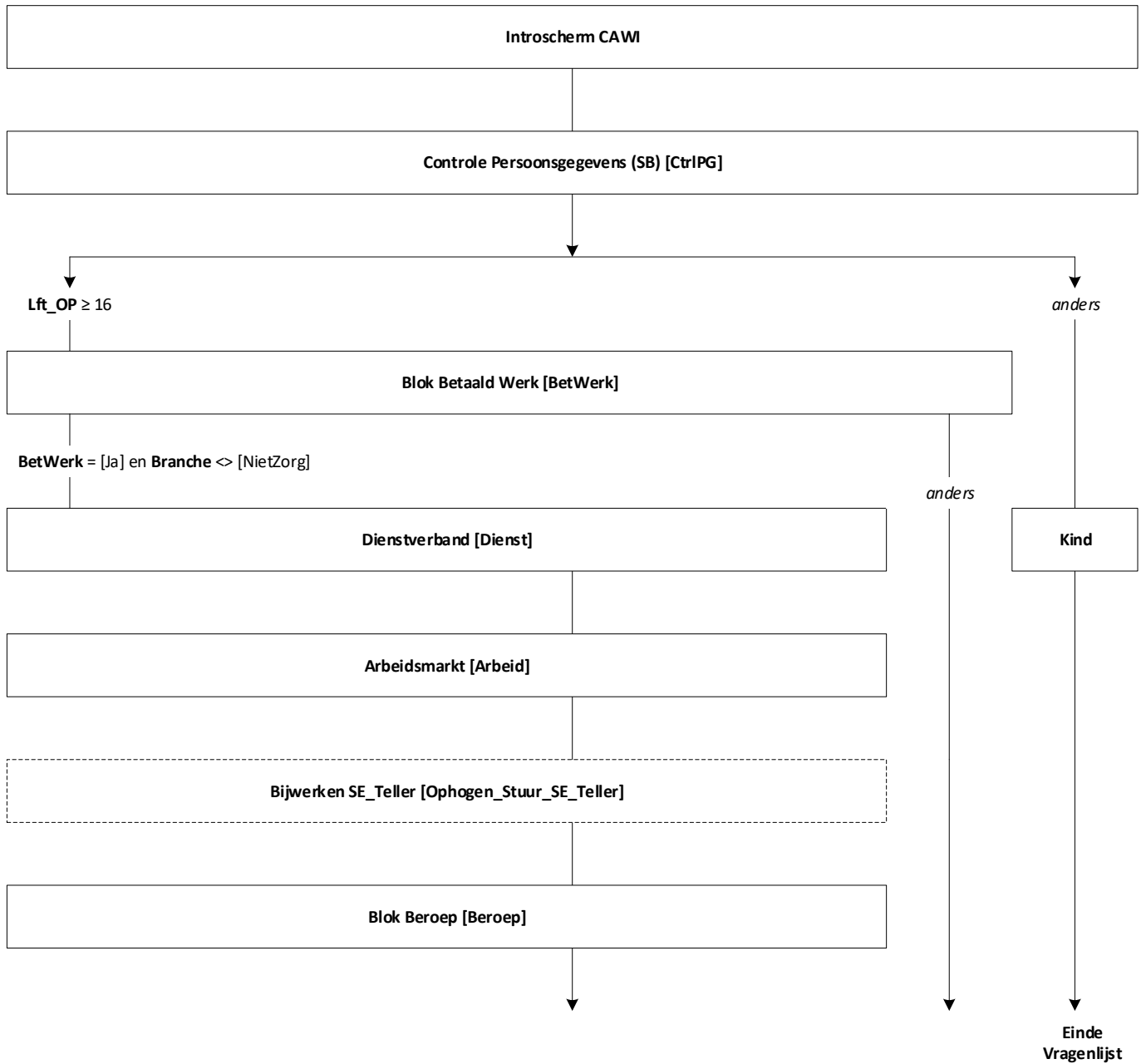
## **Peiling 7 – nov 2022**

**Thanée Franssen**  
**Madelon Cremers**

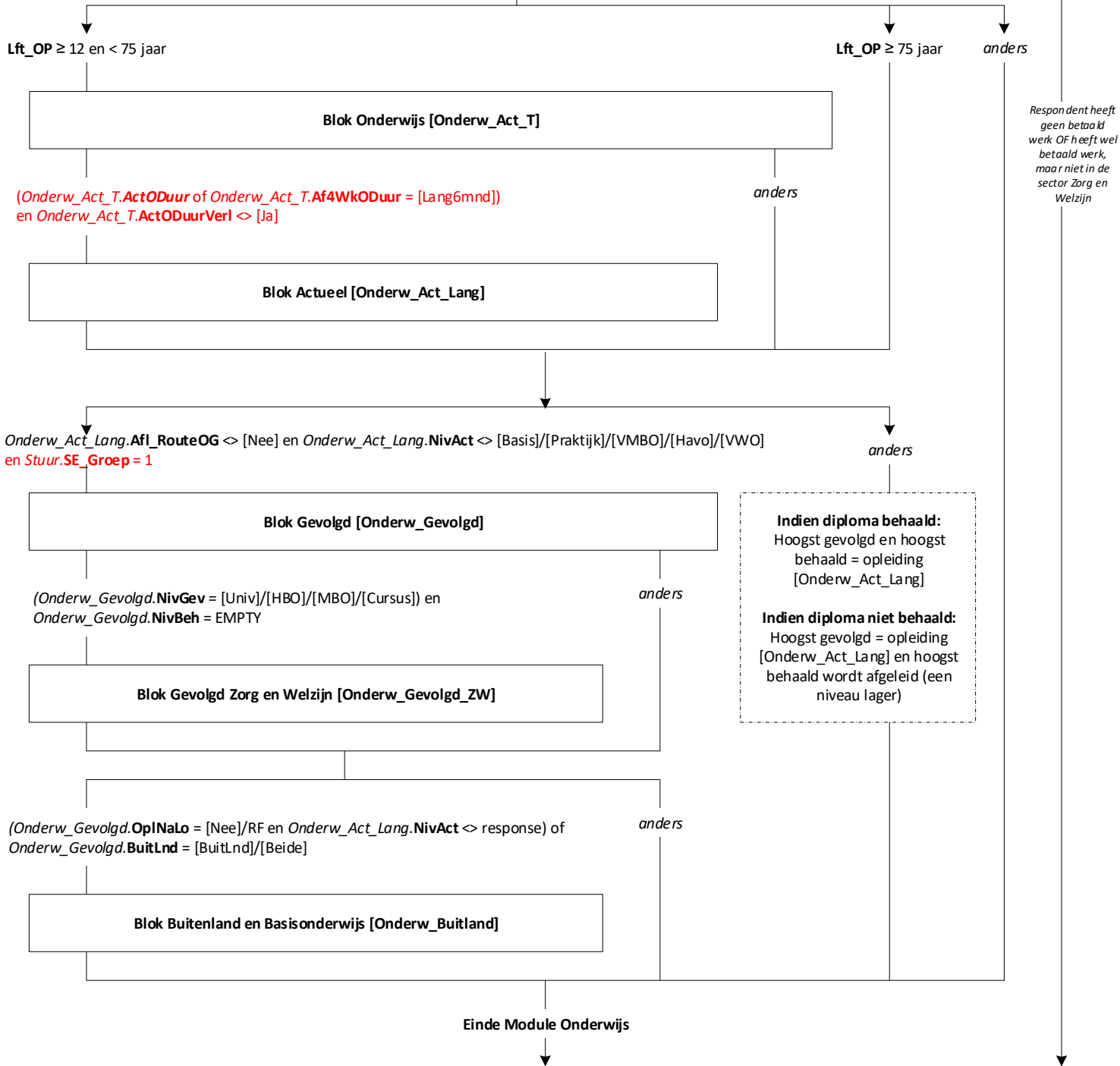
Versie: 1.2  
Datum: 9-8-2022

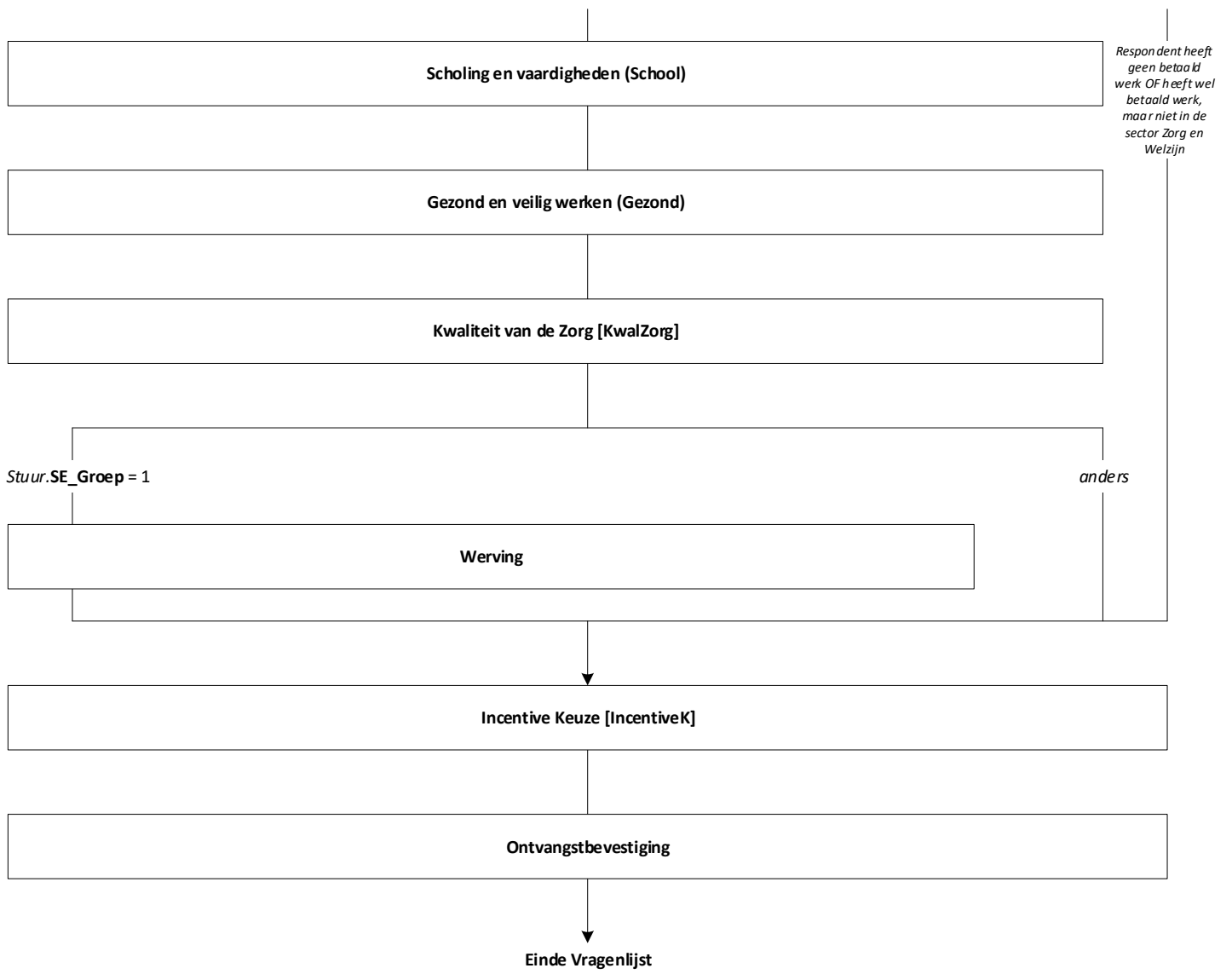


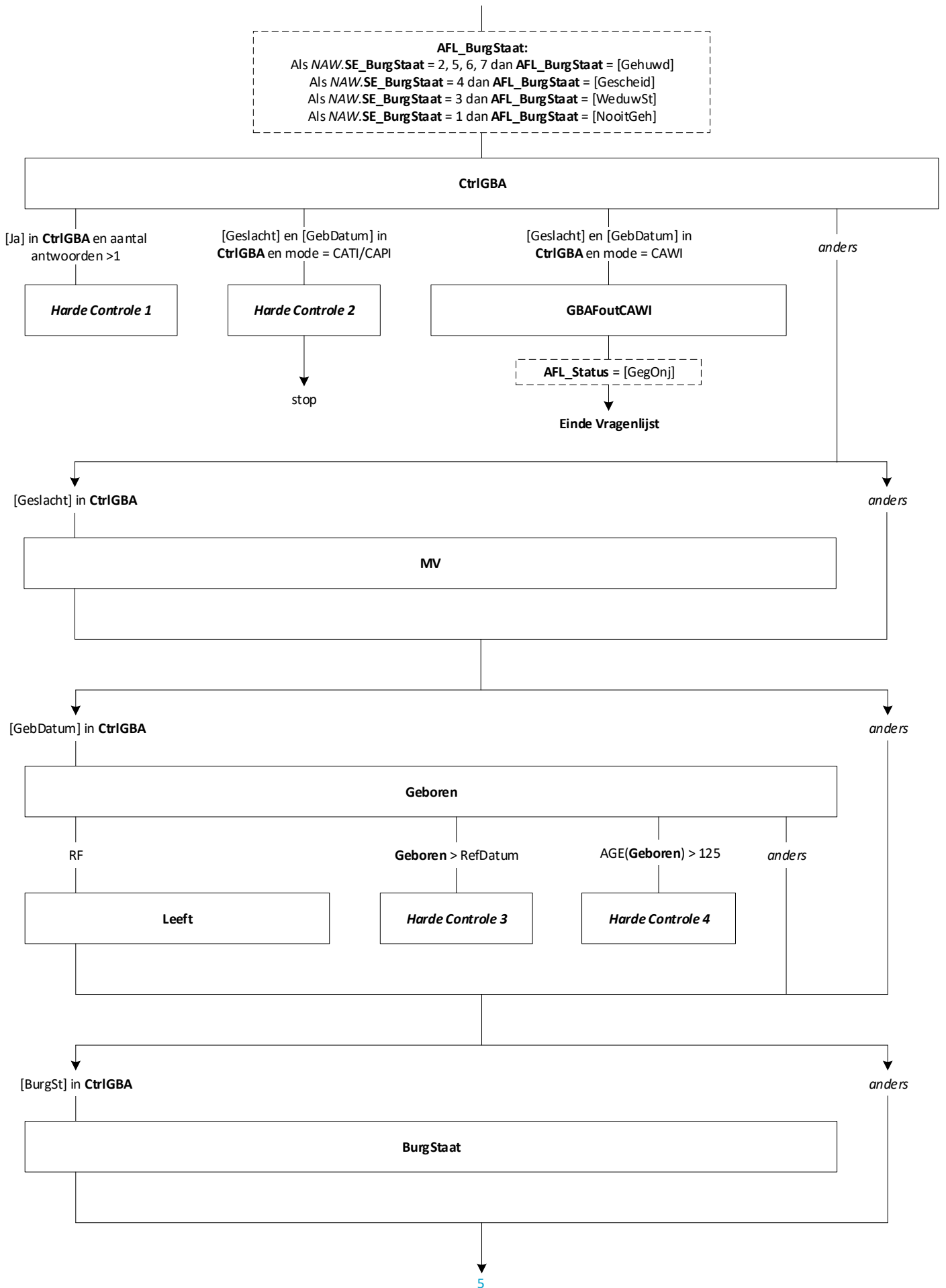
# Blokkenschema

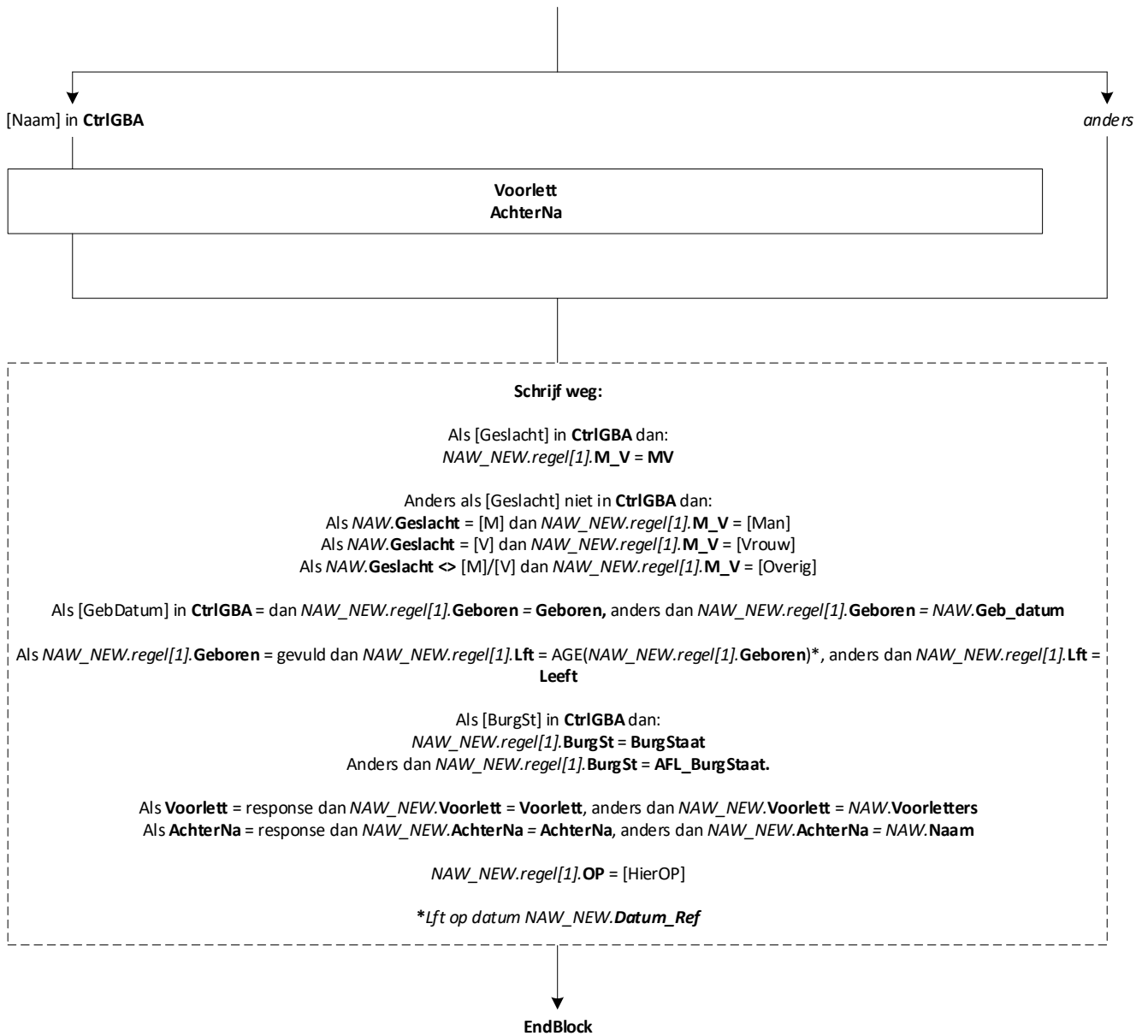


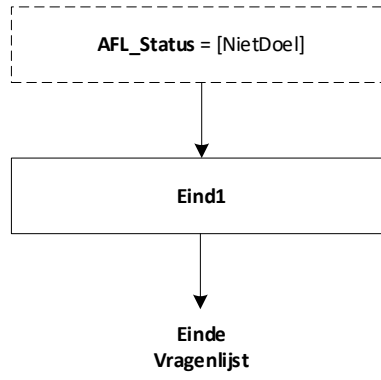
Start Module Onderwijs

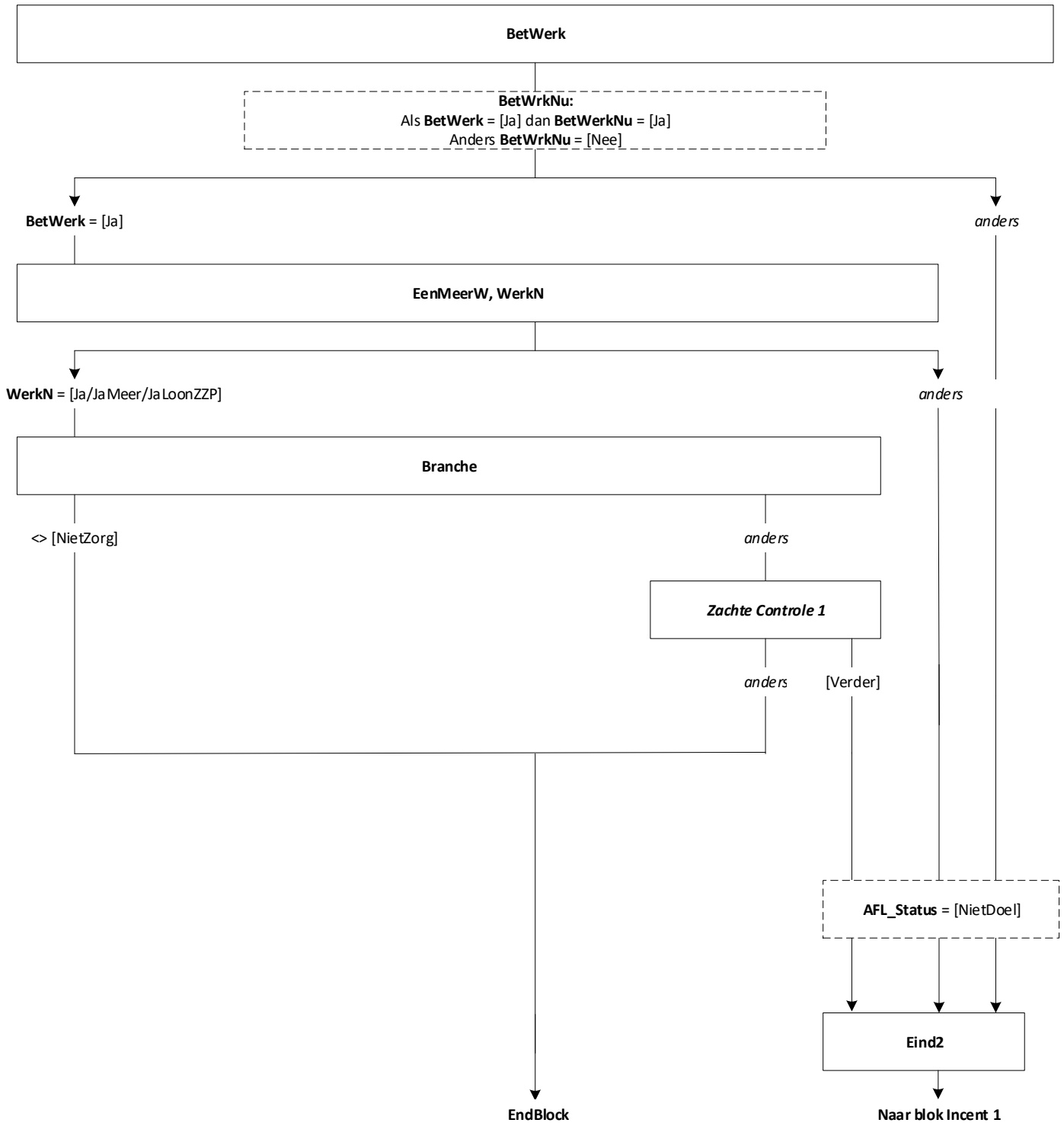




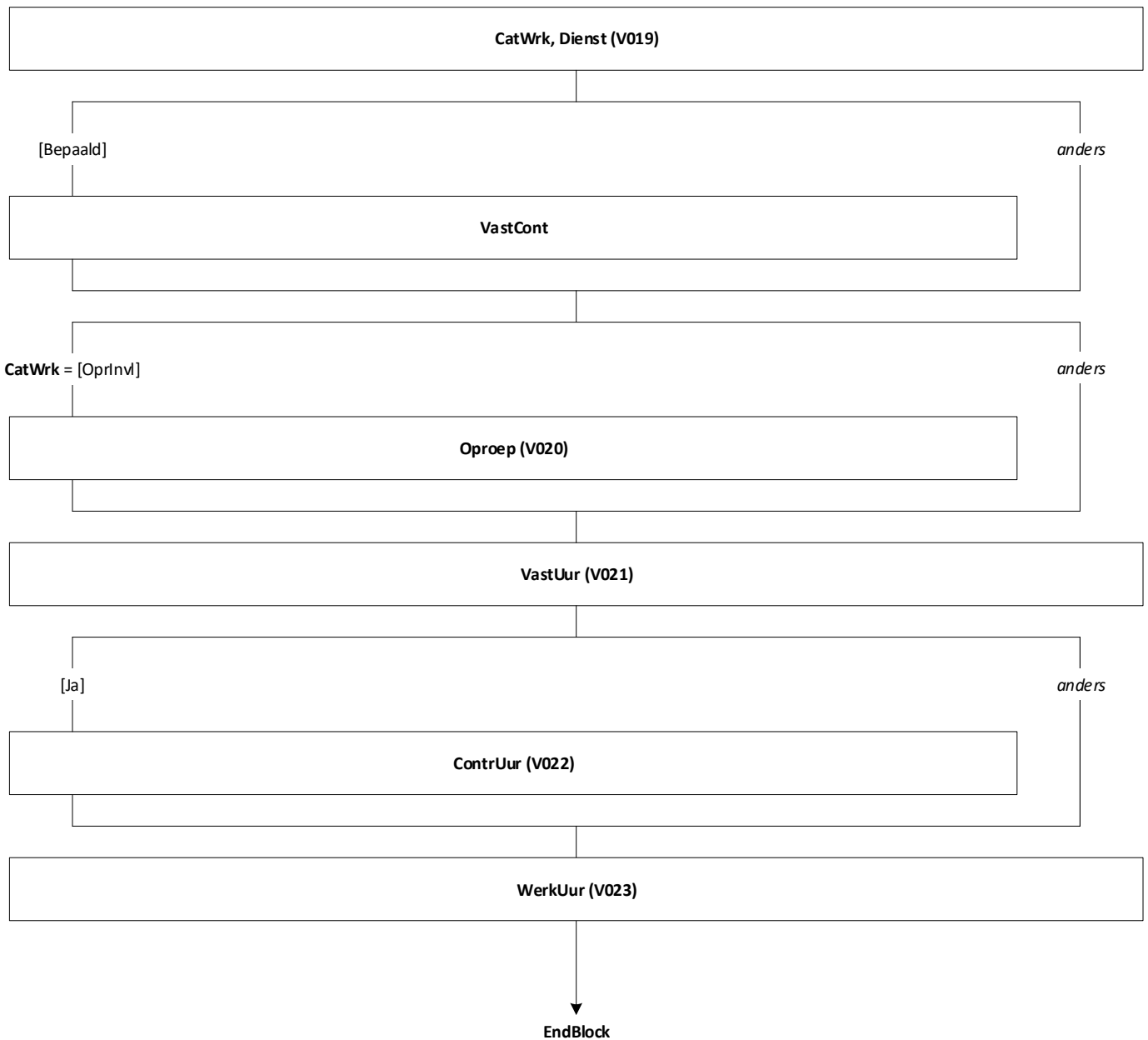




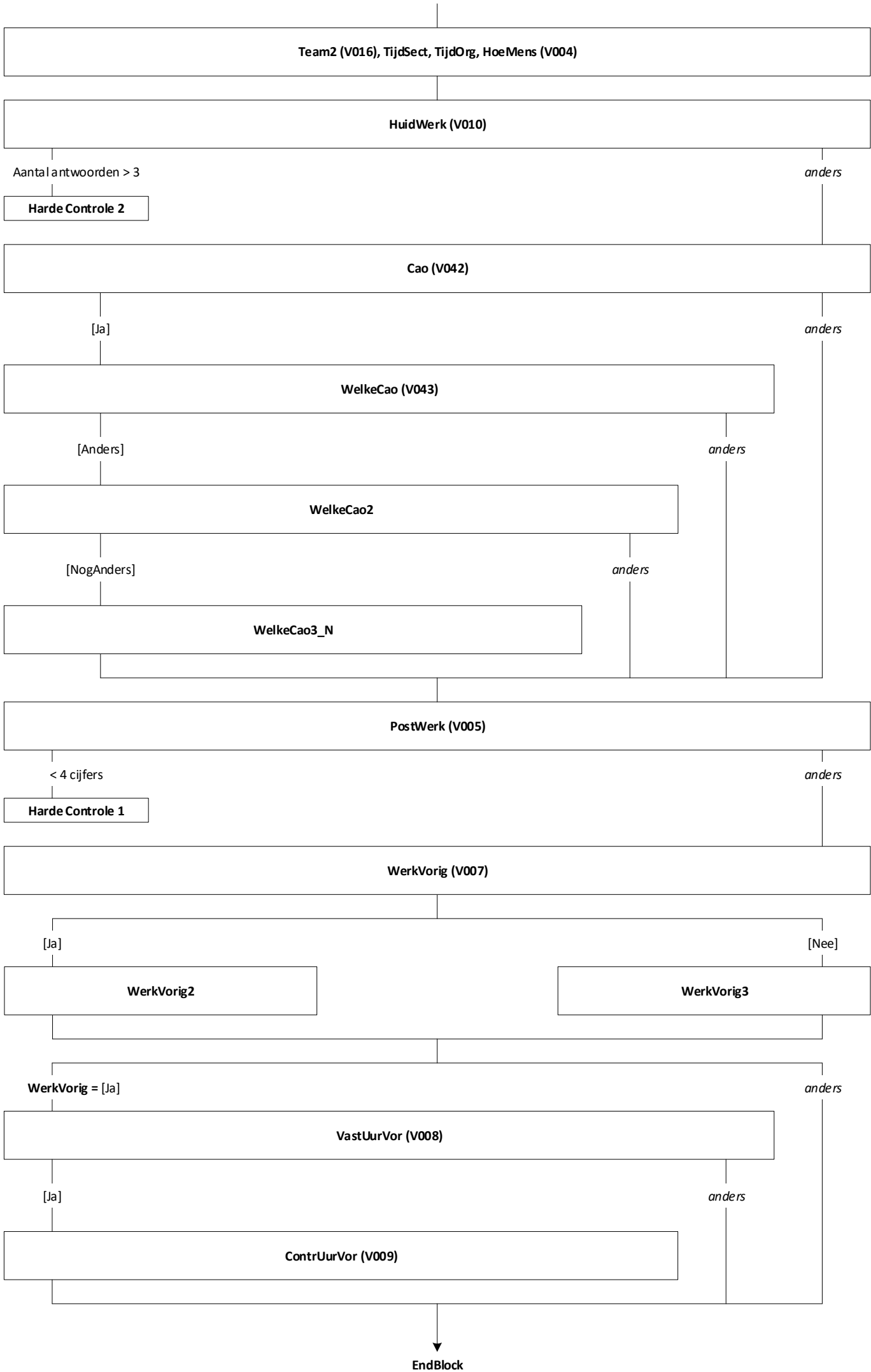








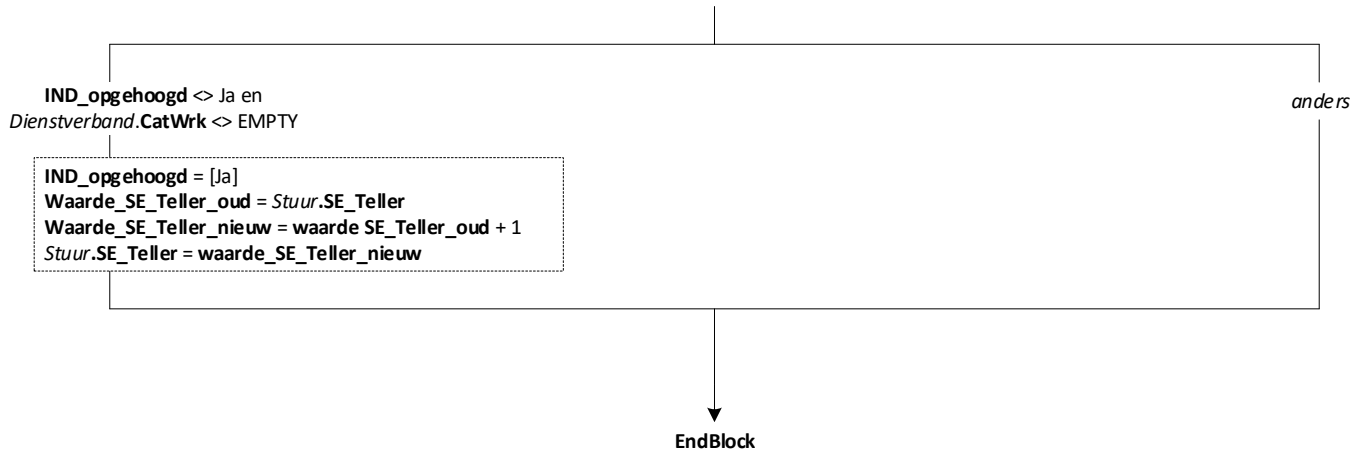


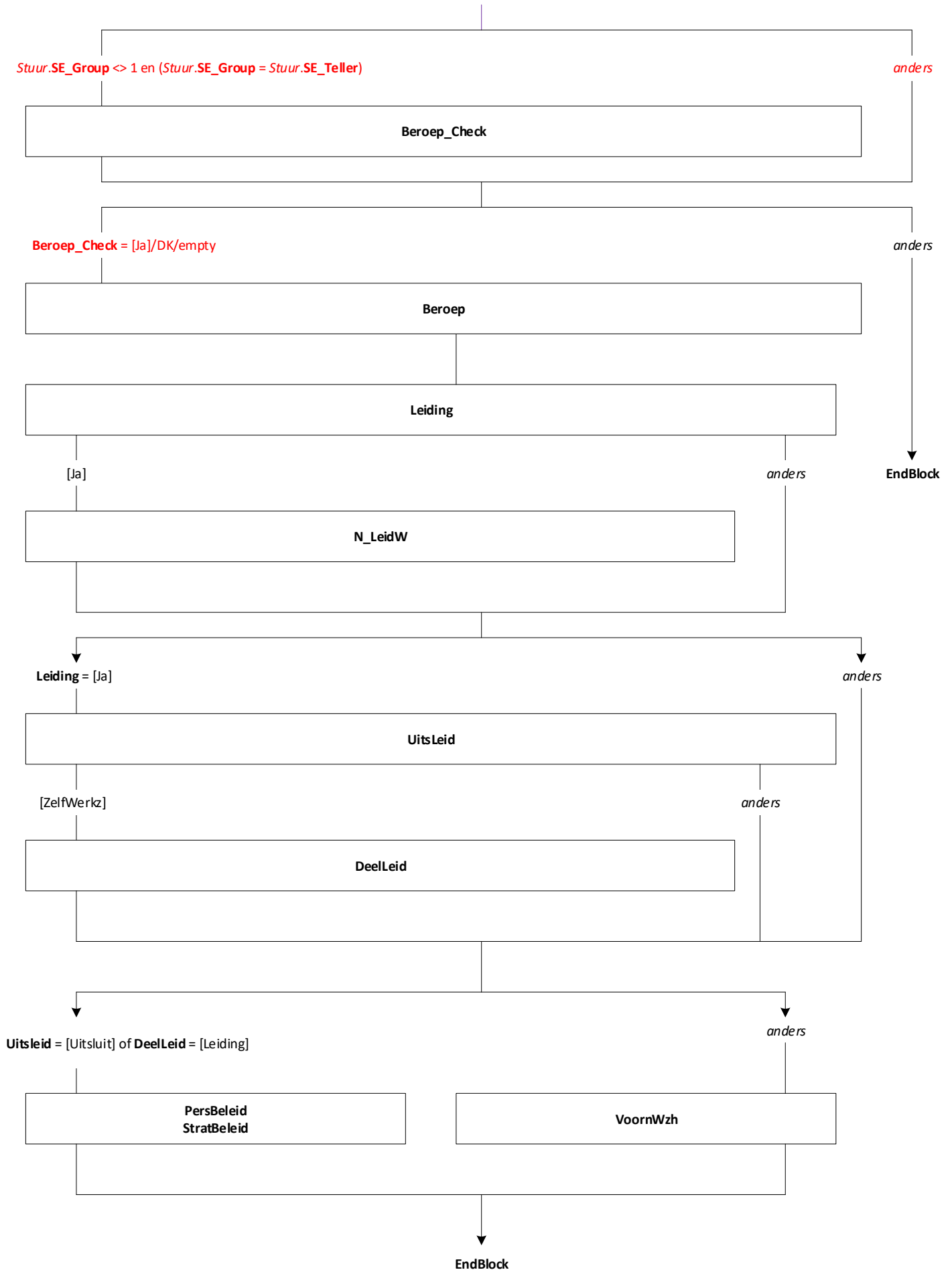


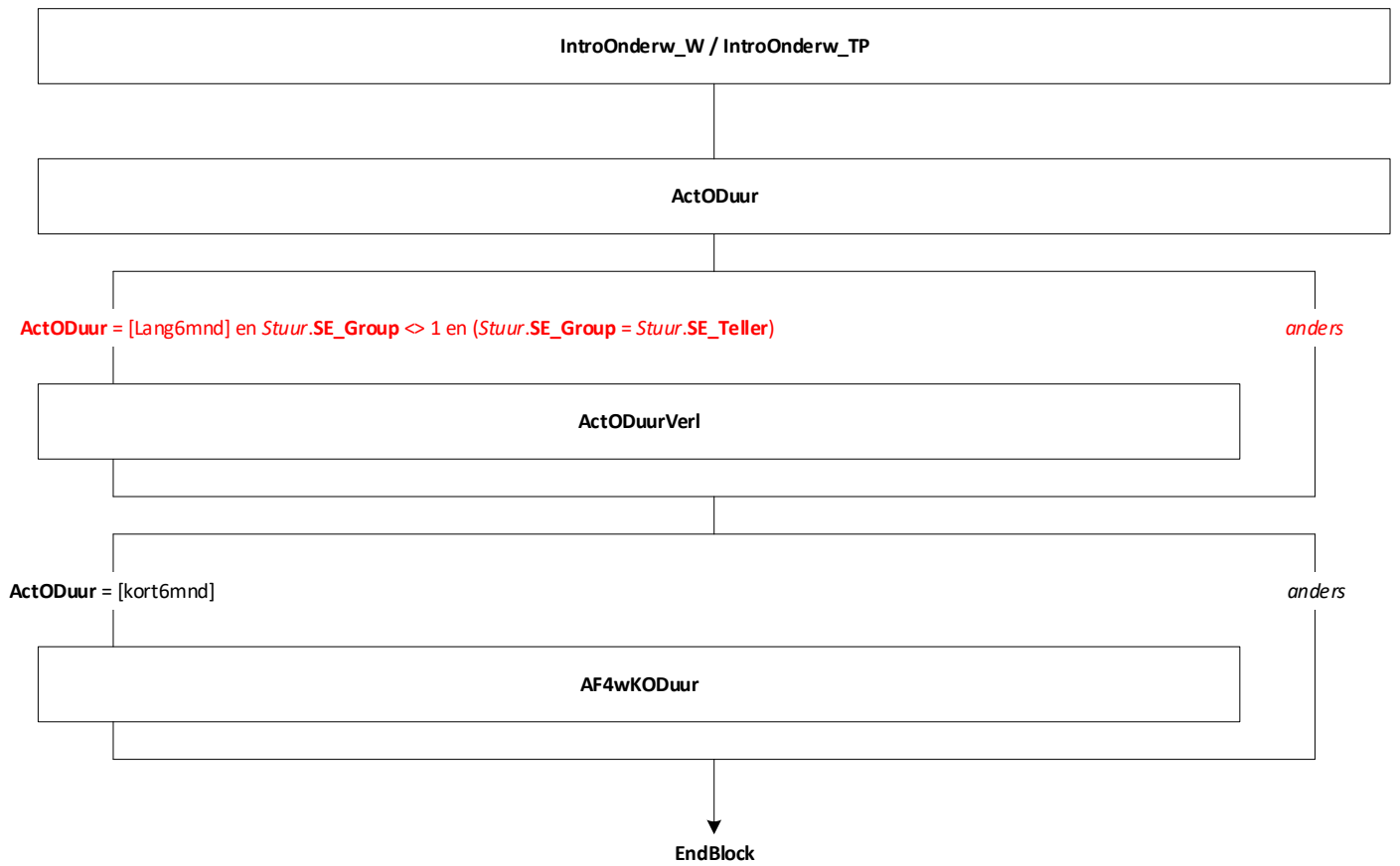


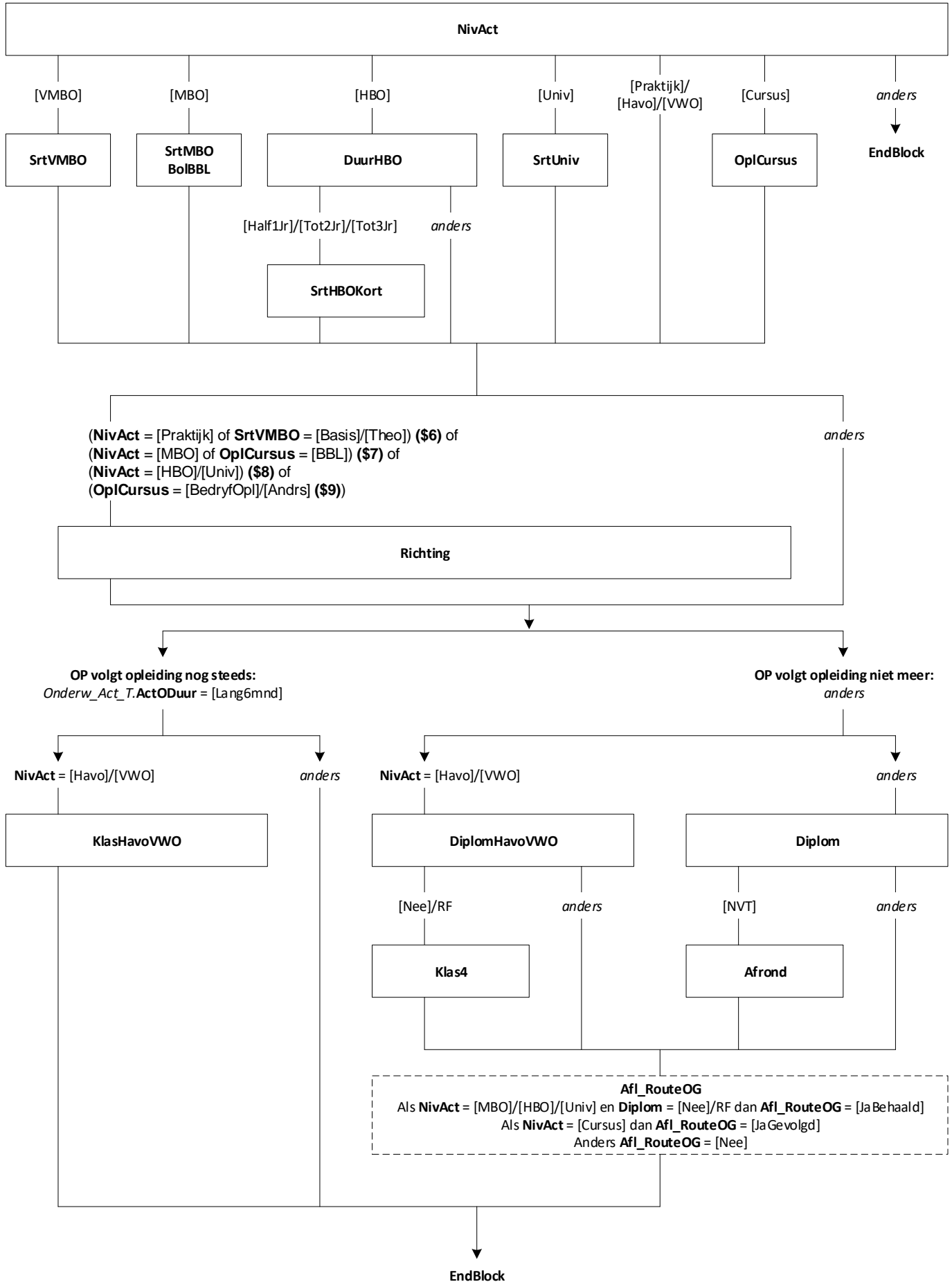
# Bijwerken SE\_Teller [Ophogen\_Stuur\_SE\_Teller]

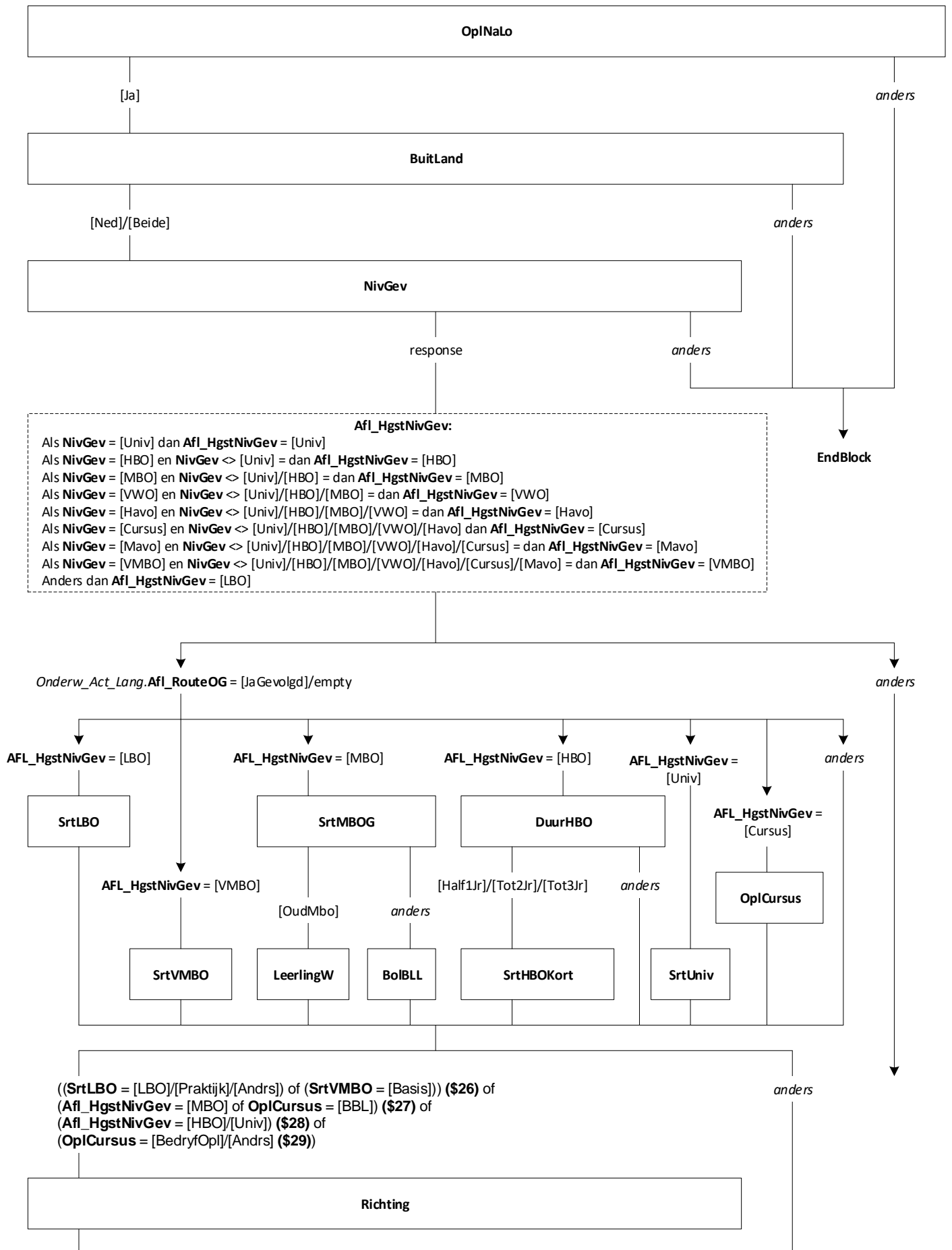
Mode = CAWI  
Blokvoorwaarde = *BetWerk.BetWerk* = [Ja] en  
*BetWerk.Branche* <> [NietZorg]  
Blokattributen = NODK, NORF, EMPTY



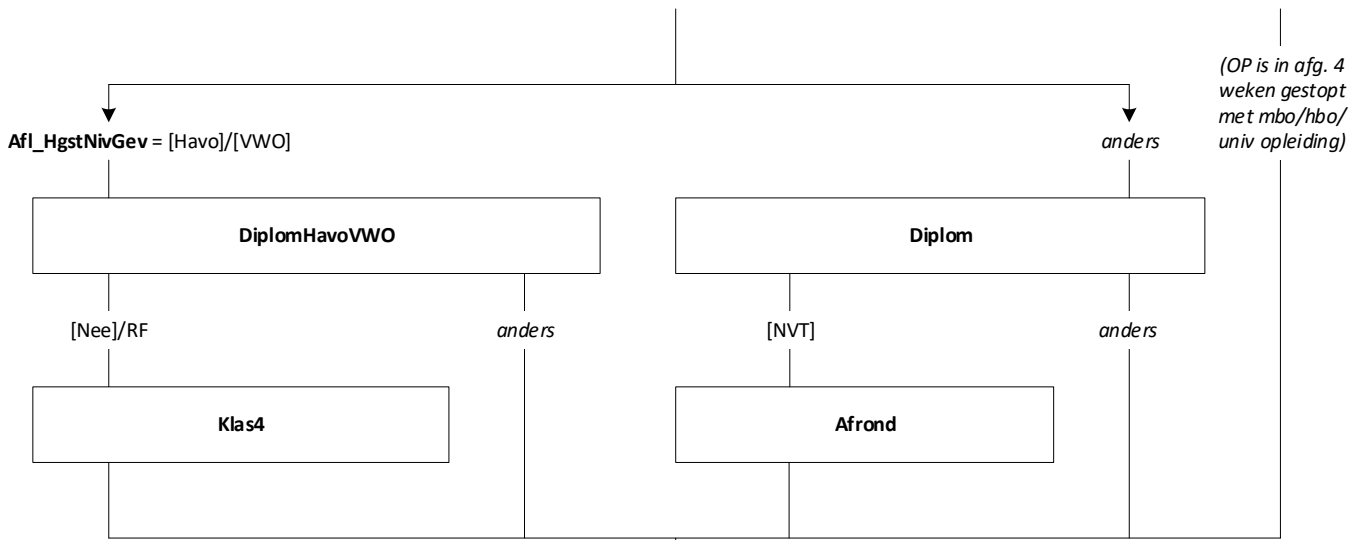












(OP is in afg. 4 weken gestopt met mbo/hbo/ univ opleiding)

- (1) (Afl\_HgstNivGev = [Cursus]/[MBO]/[HBO]/[Univ] of (Afl\_HgstNivGev = [MAVO] en NivGev = [LBO]/[VMBO])) en (Diplom = [Nee] of Afrond = [Nee]) of
- (2) Afl\_HgstNivGev = [VWO] en Klas4 = [Nee] en NivGev = [LBO]/[VMBO]/[MAVO]/[Havo]/[Cursus] of
- (3) Afl\_HgstNivGev = [Havo] en Klas4 = [Nee] en NivGev = [LBO]/[VMBO]/[MAVO]/[Cursus] of
- (4) Onderw\_Act\_Lang.Afl\_RouteOG = [JaBehaald]

anders  
EndBlock



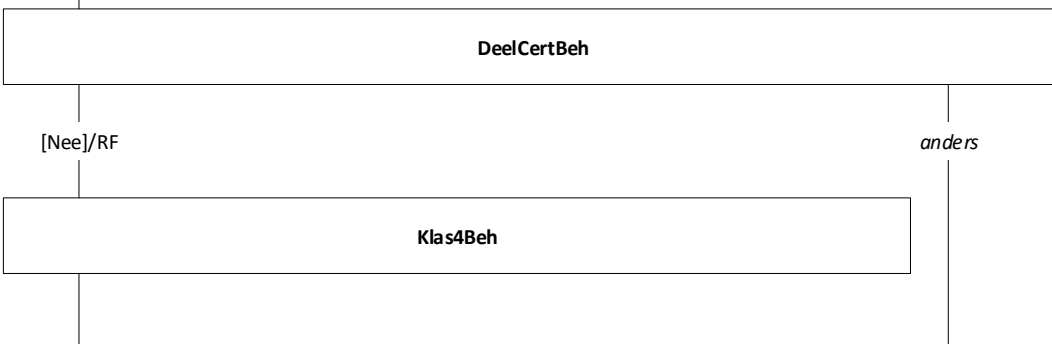
response

anders

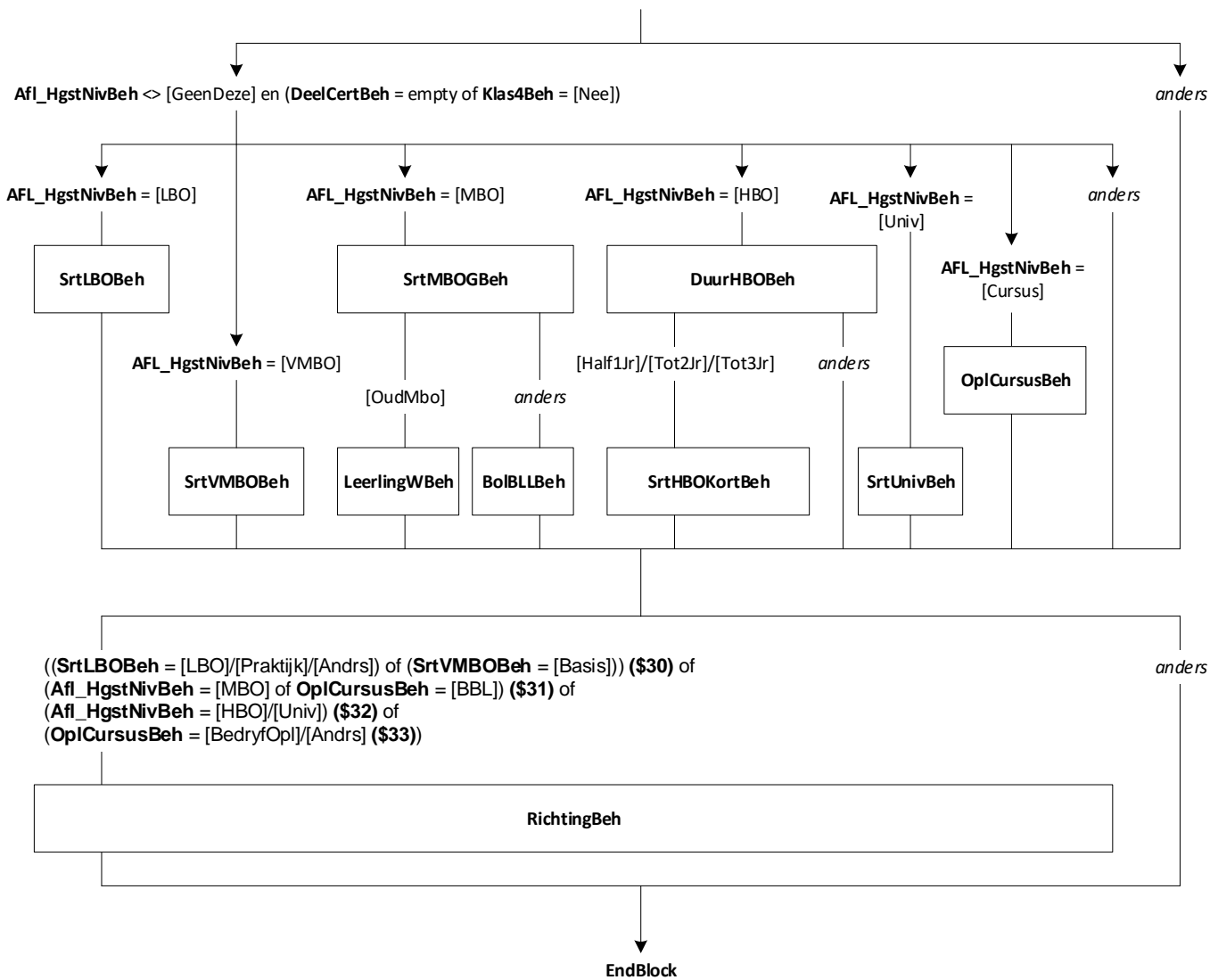
**Afl\_HgstNivBeh:**  
 Als NivBeh = [Univ] dan Afl\_HgstNivBeh = [Univ]  
 Als NivBeh = [HBO] en NivBeh <> [Univ] = dan Afl\_HgstNivBeh = [HBO]  
 Als NivBeh = [MBO] en NivBeh <> [Univ]/[HBO] = dan Afl\_HgstNivBeh = [MBO]  
 Als NivBeh = [VWO] en NivBeh <> [Univ]/[HBO]/[MBO] = dan Afl\_HgstNivBeh = [VWO]  
 Als NivBeh = [Havo] en NivBeh <> [Univ]/[HBO]/[MBO]/[VWO] = dan Afl\_HgstNivBeh = [Havo]  
 Als NivBeh = [Cursus] en NivBeh <> [Univ]/[HBO]/[MBO]/[VWO]/[Havo] dan Afl\_HgstNivBeh = [Cursus].  
 Als NivBeh = [Mavo] en NivBeh <> [Univ]/[HBO]/[MBO]/[VWO]/[Havo]/[Cursus] = dan Afl\_HgstNivBeh = [Mavo]  
 Als NivBeh = [VMBO] en NivBeh <> [Univ]/[HBO]/[MBO]/[VWO]/[Havo]/[Cursus]/[Mavo] = dan Afl\_HgstNivBeh = [VMBO]  
 Als NivBeh = [LBO] en NivBeh <> [Univ]/[HBO]/[MBO]/[VWO]/[Havo]/[Cursus]/[Mavo]/[VMBO] = dan Afl\_HgstNivBeh = [LBO].  
 Anders dan Afl\_HgstNivBeh = [GeenDeze]

- (1) NivGev = [VWO] en Afl\_HgstNivGev <> [VWO] en (Afl\_HgstNivBeh < [VWO] of Afl\_HgstNivBeh = [Cursus]/[GeenDeze])
- (2) NivGev = [Havo] en Afl\_HgstNivGev <> [Havo] en (Afl\_HgstNivBeh < [Havo] of Afl\_HgstNivBeh = [Cursus]/[GeenDeze])

anders



EndBlock

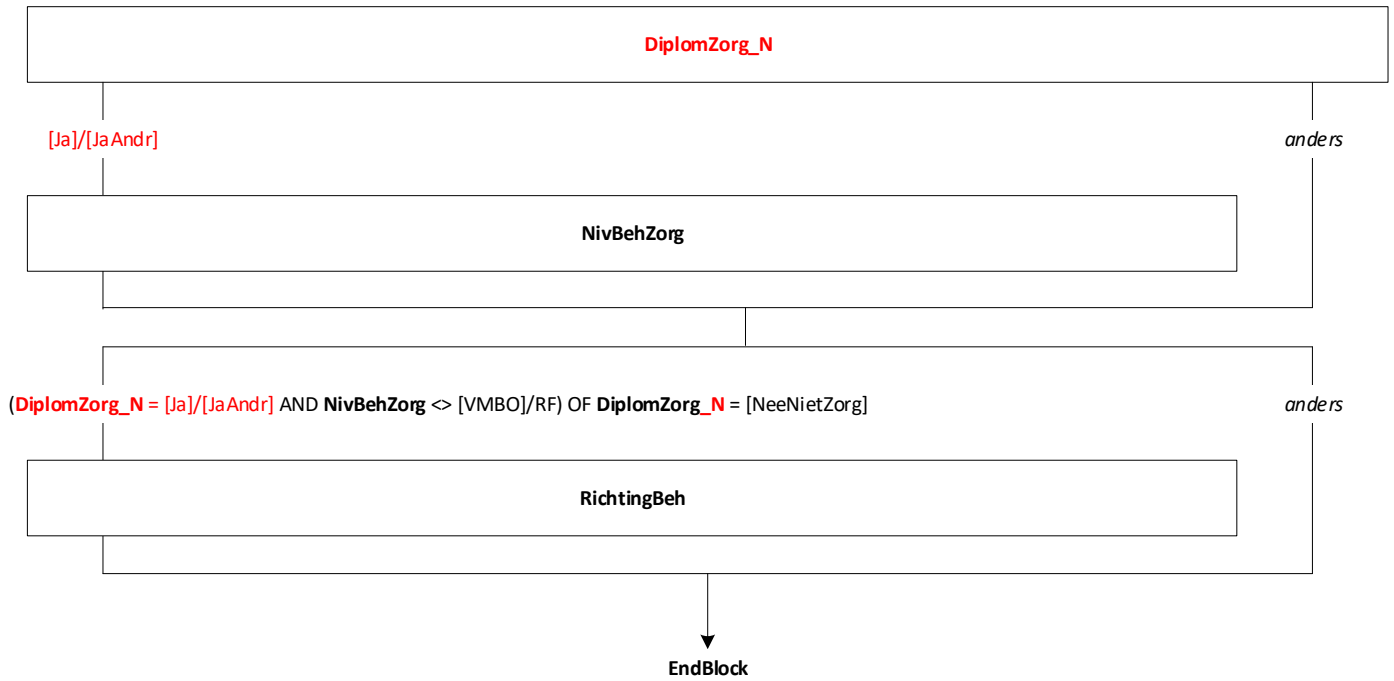




# Onderwijs: Blok Gevolgd Zorg en Welzijn

## [Onderw\_Gevolgd\_ZW]

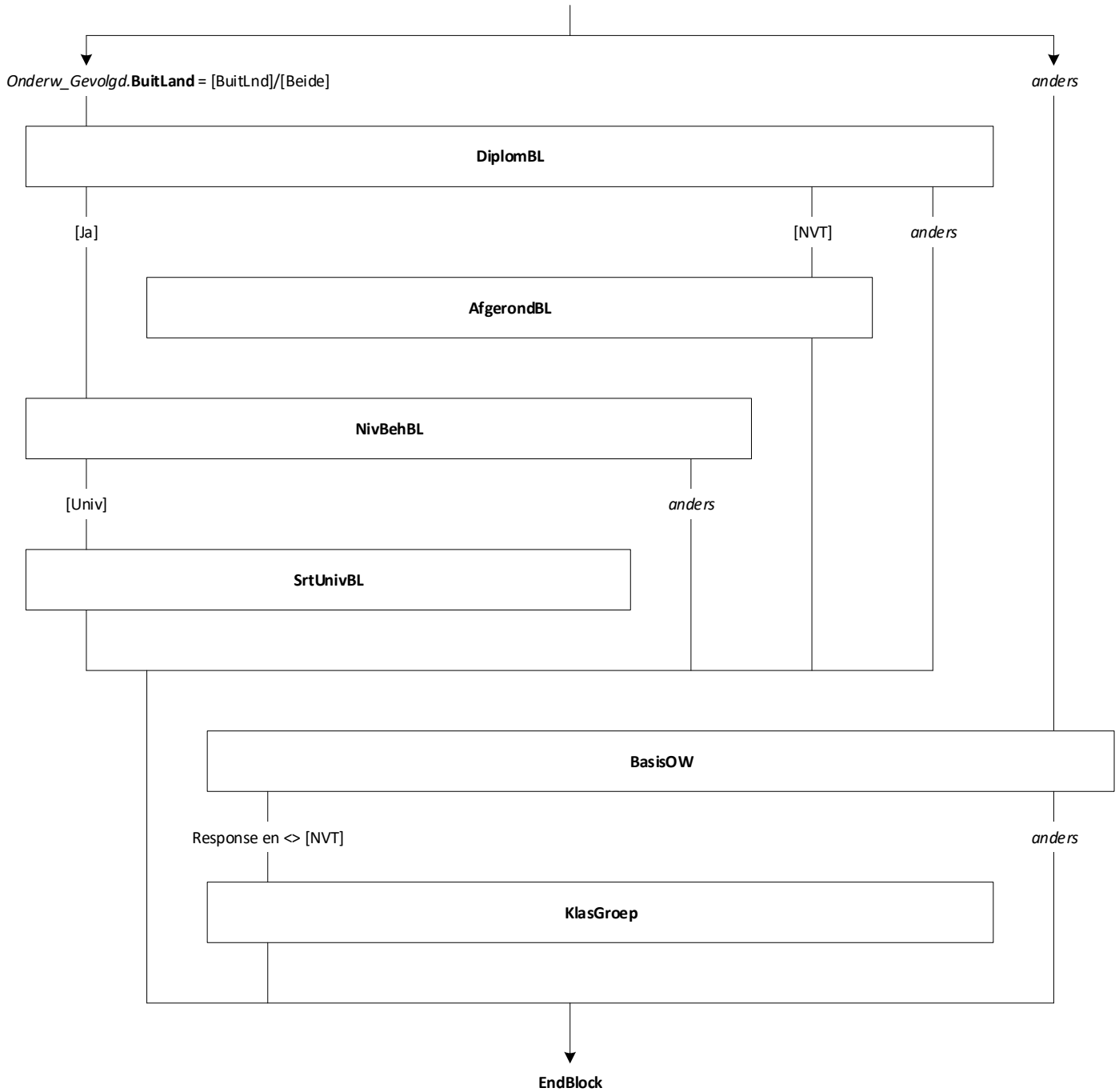
Mode = CAWI  
Blokvoorwaarde = *Onderw\_Gevolgd.NivGev* = [Univ]/[HBO]/[MBO]/[Cursus]  
AND *Onderw\_Gevolgd.NivBeh* = EMPTY en *BetWerk.BetWerk* = [Ja] en  
*BetWerk.Branche* <> [NietZorg]  
Blokattributen = NODK, RF, NO EMPTY

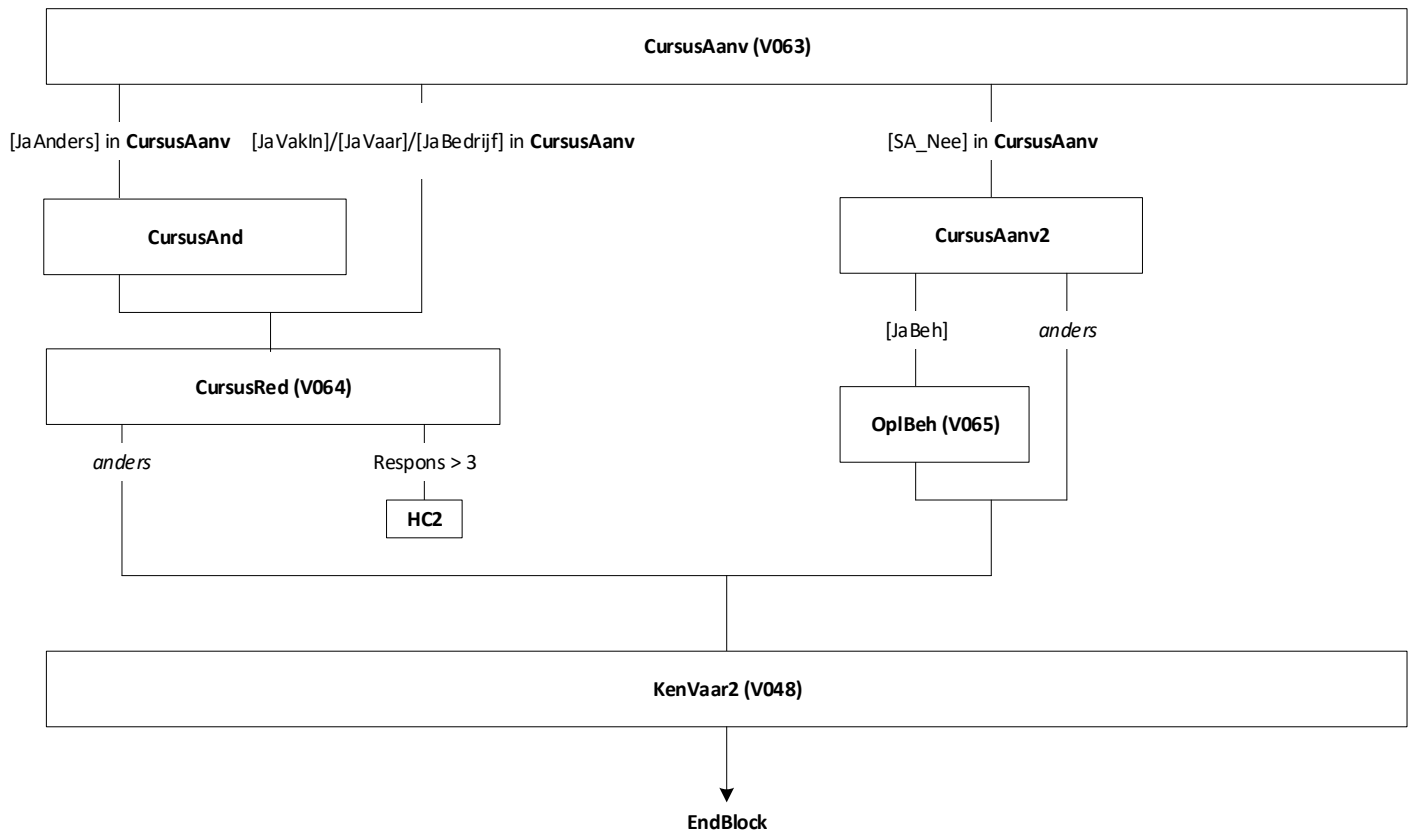




# Onderwijs: Blok Buitenland en Basisonderwijs [Onderw\_Buitland]

Mode = CAWI  
Blokvoorwaarde = ((Onderw\_Gevolgd.OplNaLo = [Nee])/RF en  
Onderw\_Act\_Lang.NivAct <> response) of Onderw\_Gevolgd.BuitLand =  
[BuitLnd]/[Beide] en BetWerk.BetWerk = [Ja] en BetWerk.Branche <>  
[NietZorg] en Stuur.SE\_Groep = 1  
Blokattributen = NODK, RF, NO EMPTY







WerkDruk1\_Group (V024): WerkDruk\_1a, WerkDruk\_1b, WerkDruk\_1c, WerkDruk\_1d, WerkDruk\_1e

WerkDruk2 (V025), WerkDruk3 (V026)

Loyal\_Group (V036): Loyal\_a, Loyal\_b, Loyal\_c, Loyal\_d, Loyal\_e

Energie\_Group (037): Energie\_a, Energie\_b, Energie\_c, Energie\_d

Tevrinhoud1\_Group (V032): Tevrinhoud1\_a, Tevrinhoud1\_b, Tevrinhoud1\_c, Tevrinhoud1\_d, Tevrinhoud1\_e, Tevrinhoud1\_f

Tevrinhoud2\_Group (V032B): Tevrinhoud2\_a, Tevrinhoud2\_b, Tevrinhoud2\_c, Tevrinhoud2\_d, Tevrinhoud2\_e, Tevrinhoud2\_f

Rooster (V033)

TevrTemp\_Group (V032C): TevrTemp\_a, TevrTemp\_b, TevrTemp\_c, TevrTemp\_d, TevrTemp\_e, TevrTemp\_f

TevrLeid\_Group (V032D): TevrLeid\_a, TevrLeid\_b, TevrLeid\_c, TevrLeid\_d, TevrLeid\_e, TevrLeid\_f, TevrLeid\_g

TevrWerk (V034), TevrOrg (V035), WerkZorg1 (V082), WerkZorg2 (V083)

Agres1\_Group (V027): Agres1\_a, Agres1\_b, Agres1\_c, Agres1\_d, Agres1\_e, Agres1\_f

Agres2 (V028)

Agres3\_Group (V029): Agres3\_a, Agres3\_b, Agres3\_c, Agres3\_d, Agres3\_e, Agres3\_f

Agres4 (V029), Agres5 (V030)

↓  
EndBlock

