



Centraal Bureau  
voor de Statistiek

# **NEA-BON 2018**

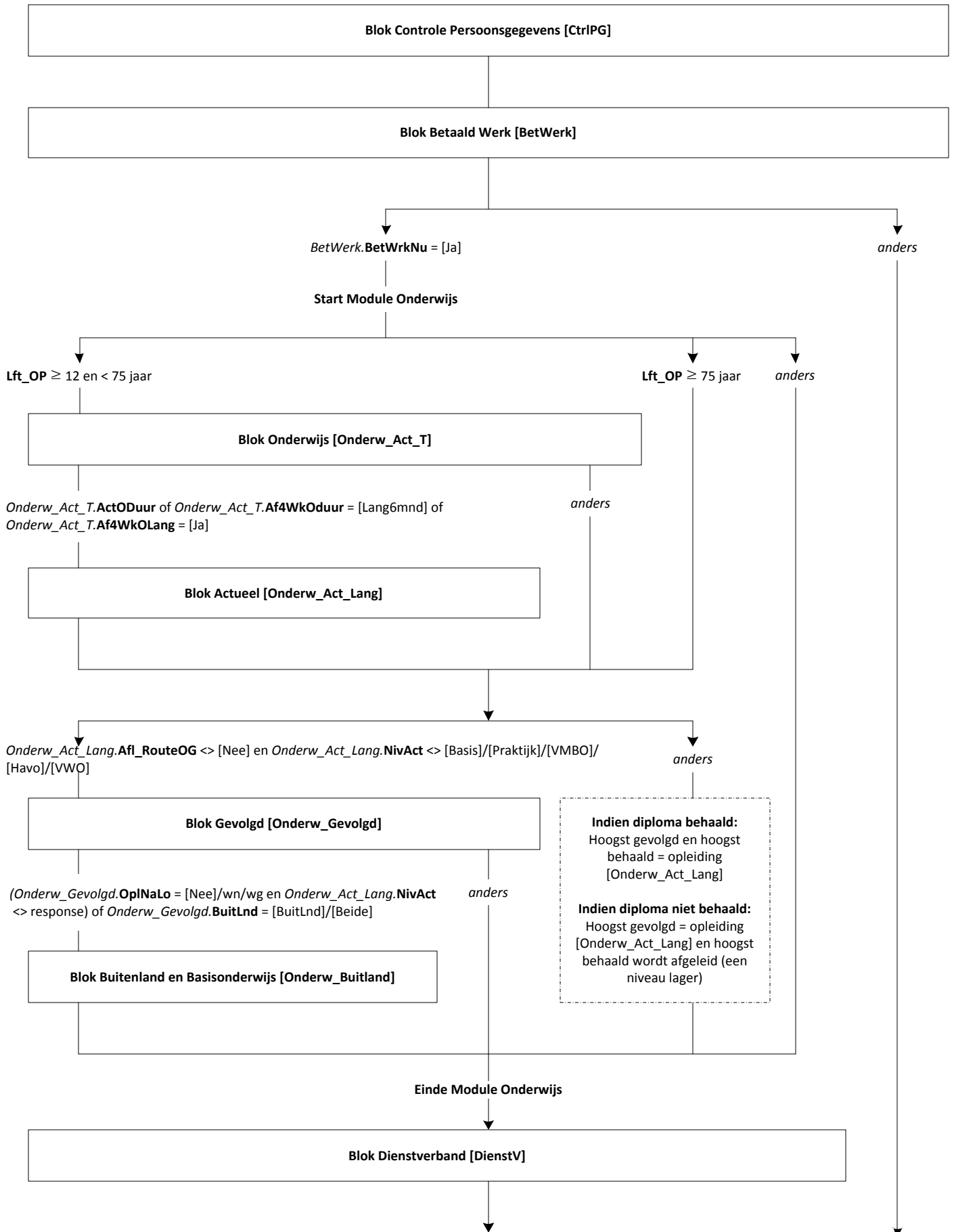
**M. Cremers**

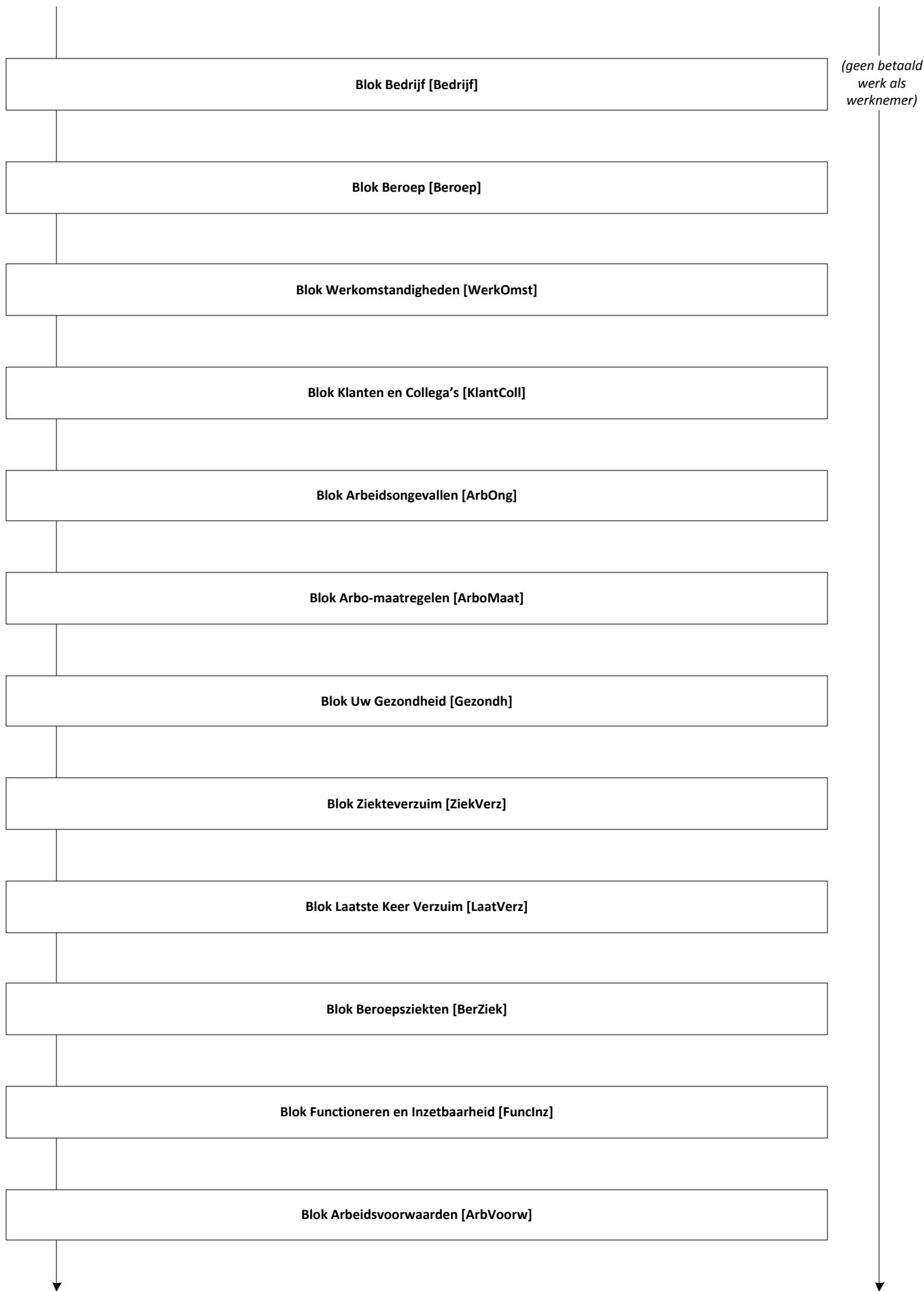
Versie: 1.8

Datum: 9-8-2018

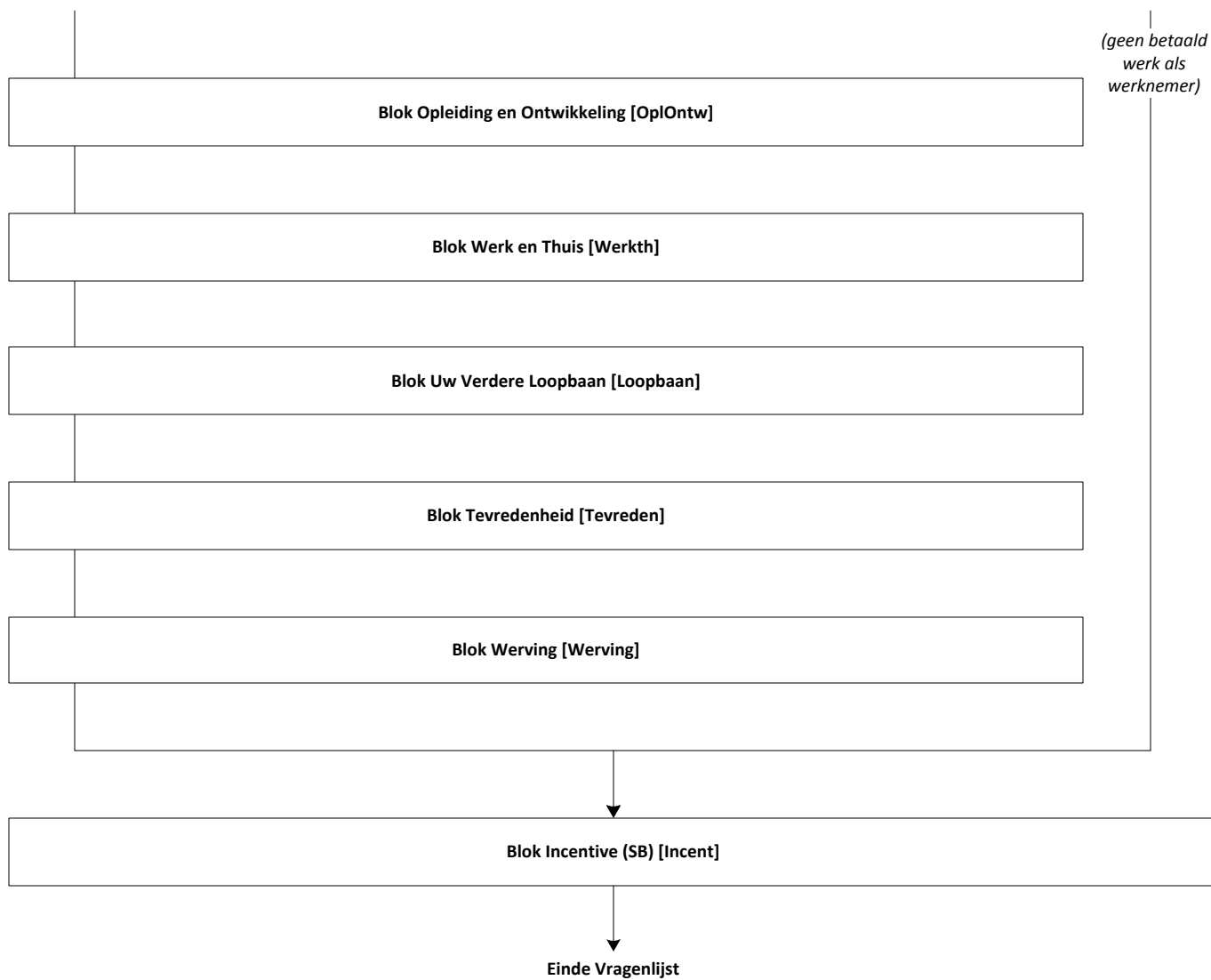


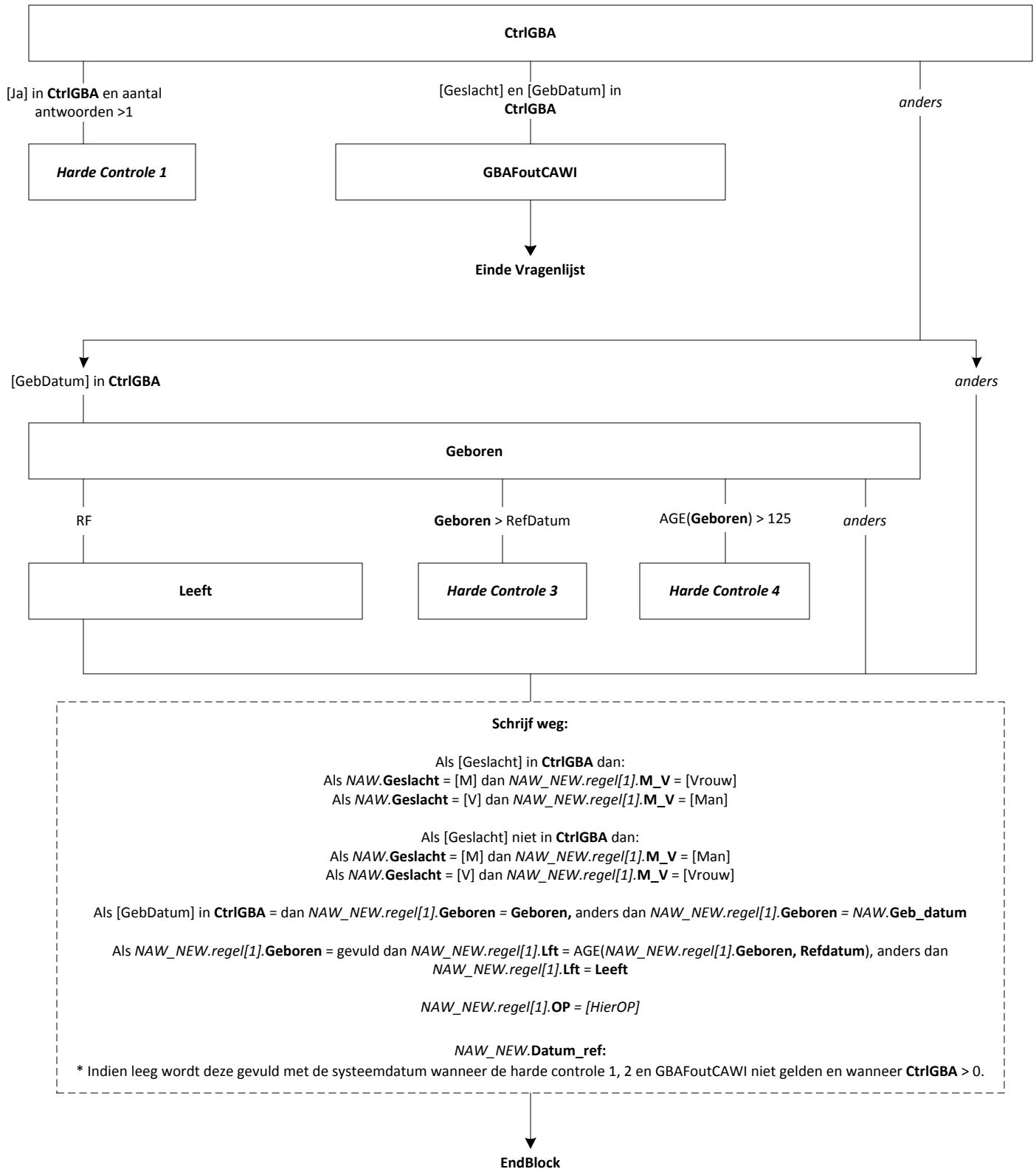
# Blokkenschema

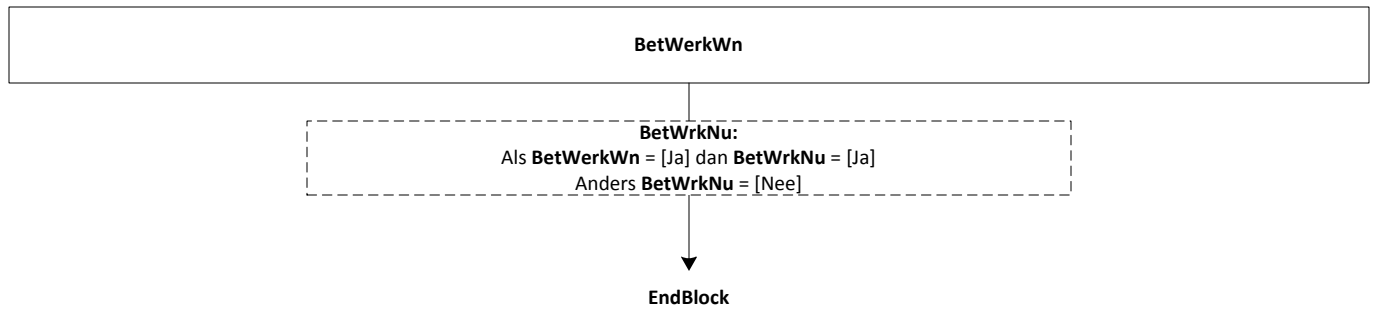


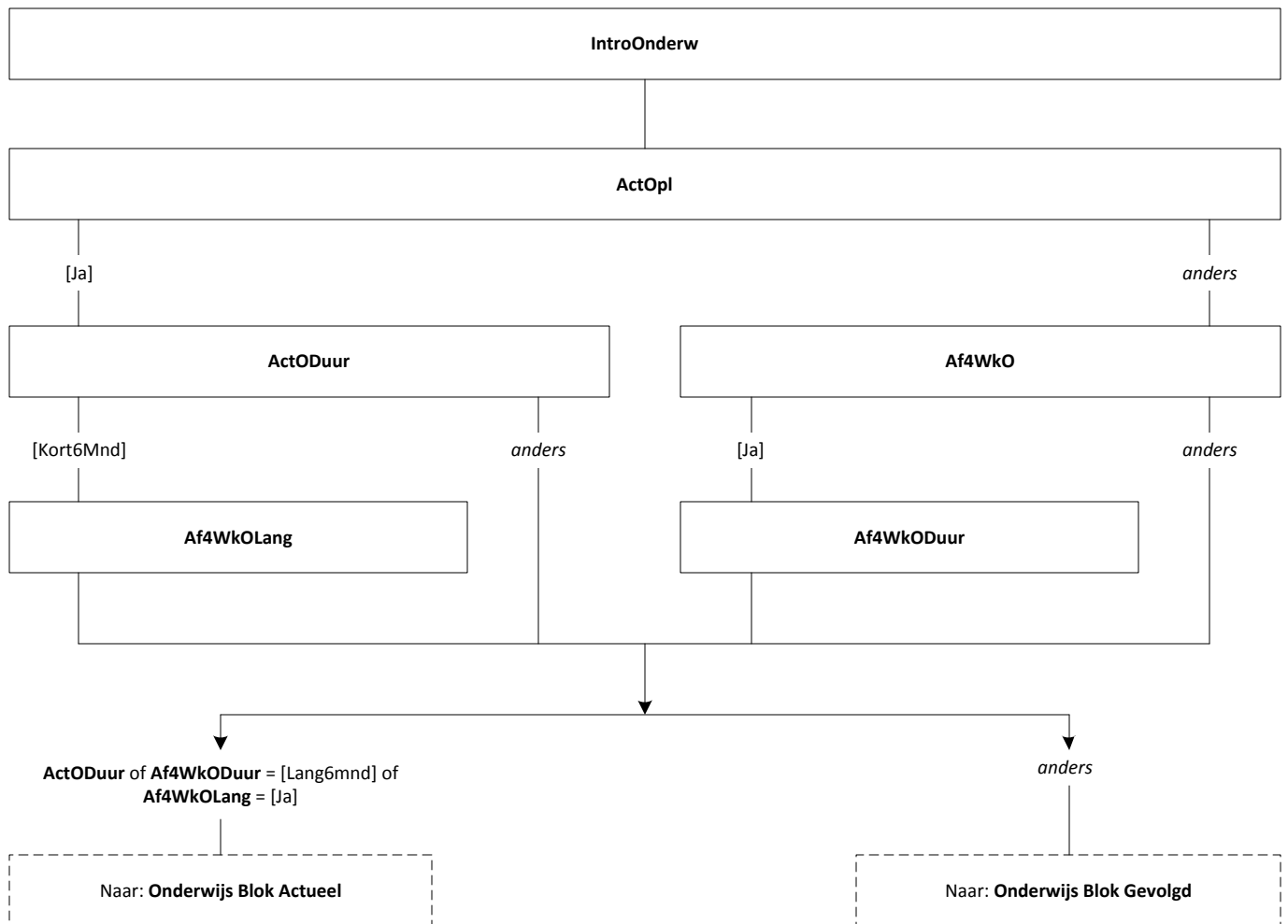


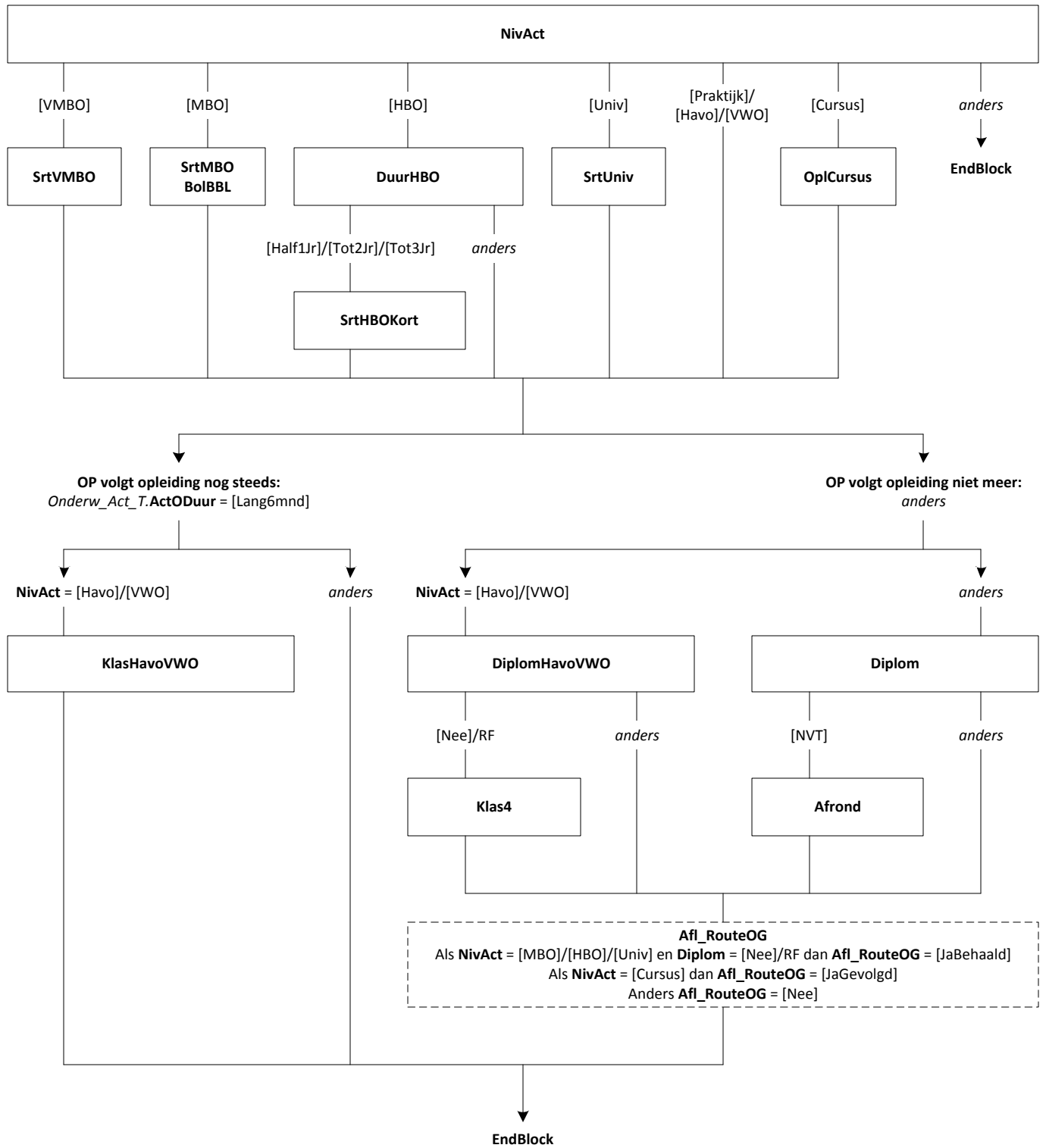
(geen betaald  
werk als  
werknemer)



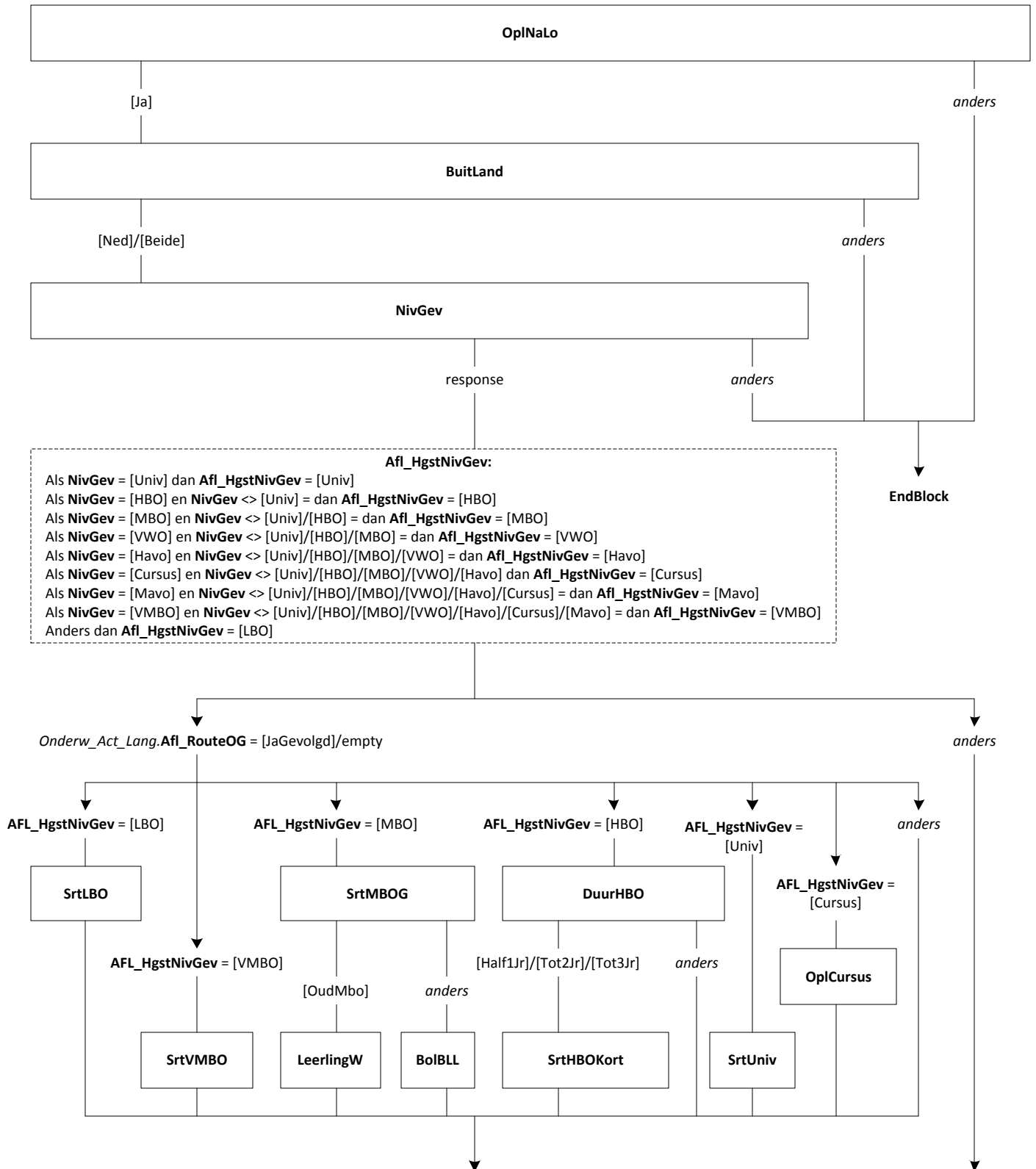






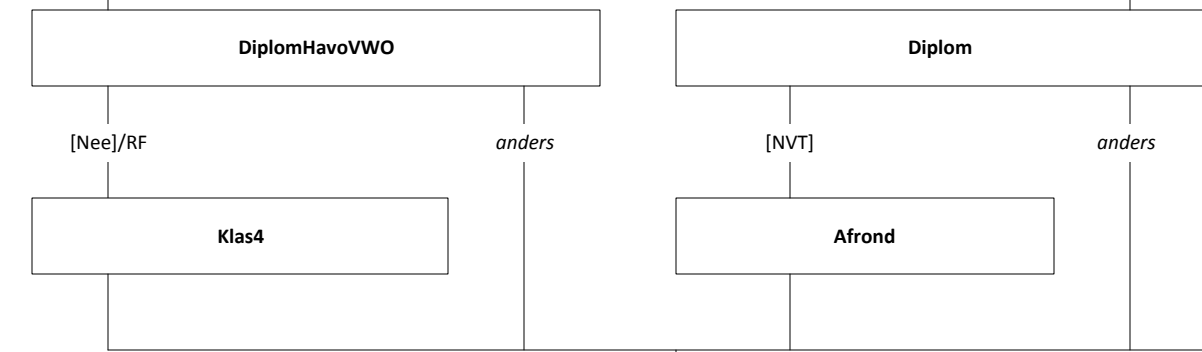






(OP is in afg. 4 weken gestopt met mbo/hbo/ univ opleiding)

Afl\_HgstNivGev = [Havo]/[VWO]



- (1) (Afl\_HgstNivGev = [Cursus]/[MBO]/[HBO]/[Univ] of (Afl\_HgstNivGev = [MAVO] en NivGev = [LBO]/[VMBO])) en (Diplom = [Nee] of Afrond = [Nee]) of
- (2) Afl\_HgstNivGev = [VWO] en Klas4 = [Nee] en NivGev = [LBO]/[VMBO]/[MAVO]/[Havo]/[Cursus] of
- (3) Afl\_HgstNivGev = [Havo] en Klas4 = [Nee] en NivGev = [LBO]/[VMBO]/[MAVO]/[Cursus] of
- (4) Onderw\_Act\_Lang.Afl\_RouteOG = [JaBehaald]

anders  
EndBlock



[GeenDeze] en  
Aantal antwoorden > 1

response en harde controle 1 niet afgegaan

anders



**Afl\_HgstNivBeh:**

- Als NivBeh = [Univ] dan Afl\_HgstNivBeh = [Univ]
- Als NivBeh = [HBO] en NivBeh <> [Univ] = dan Afl\_HgstNivBeh = [HBO]
- Als NivBeh = [MBO] en NivBeh <> [Univ]/[HBO] = dan Afl\_HgstNivBeh = [MBO]
- Als NivBeh = [VWO] en NivBeh <> [Univ]/[HBO]/[MBO] = dan Afl\_HgstNivBeh = [VWO]
- Als NivBeh = [Havo] en NivBeh <> [Univ]/[HBO]/[MBO]/[VWO] = dan Afl\_HgstNivBeh = [Havo]
- Als NivBeh = [Cursus] en NivBeh <> [Univ]/[HBO]/[MBO]/[VWO]/[Havo] dan Afl\_HgstNivBeh = [Cursus].
- Als NivBeh = [Mavo] en NivBeh <> [Univ]/[HBO]/[MBO]/[VWO]/[Havo]/[Cursus] = dan Afl\_HgstNivBeh = [Mavo]
- Als NivBeh = [VMBO] en NivBeh <> [Univ]/[HBO]/[MBO]/[VWO]/[Havo]/[Cursus]/[Mavo] = dan Afl\_HgstNivBeh = [VMBO]
- Als NivBeh = [LBO] en NivBeh <> [Univ]/[HBO]/[MBO]/[VWO]/[Havo]/[Cursus]/[Mavo]/[VMBO] = dan Afl\_HgstNivBeh = [LBO].
- Anders dan Afl\_HgstNivBeh = [GeenDeze]

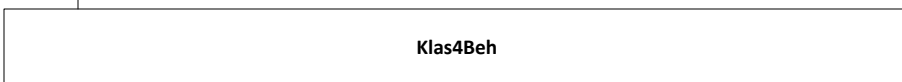
- (1) NivGev = [VWO] en Afl\_HgstNivGev <> [VWO] en (Afl\_HgstNivBeh < [VWO] of Afl\_HgstNivBeh = [Cursus]/[GeenDeze])
- (2) NivGev = [Havo] en Afl\_HgstNivGev <> [Havo] en (Afl\_HgstNivBeh < [Havo] of Afl\_HgstNivBeh = [Cursus]/[GeenDeze])

anders

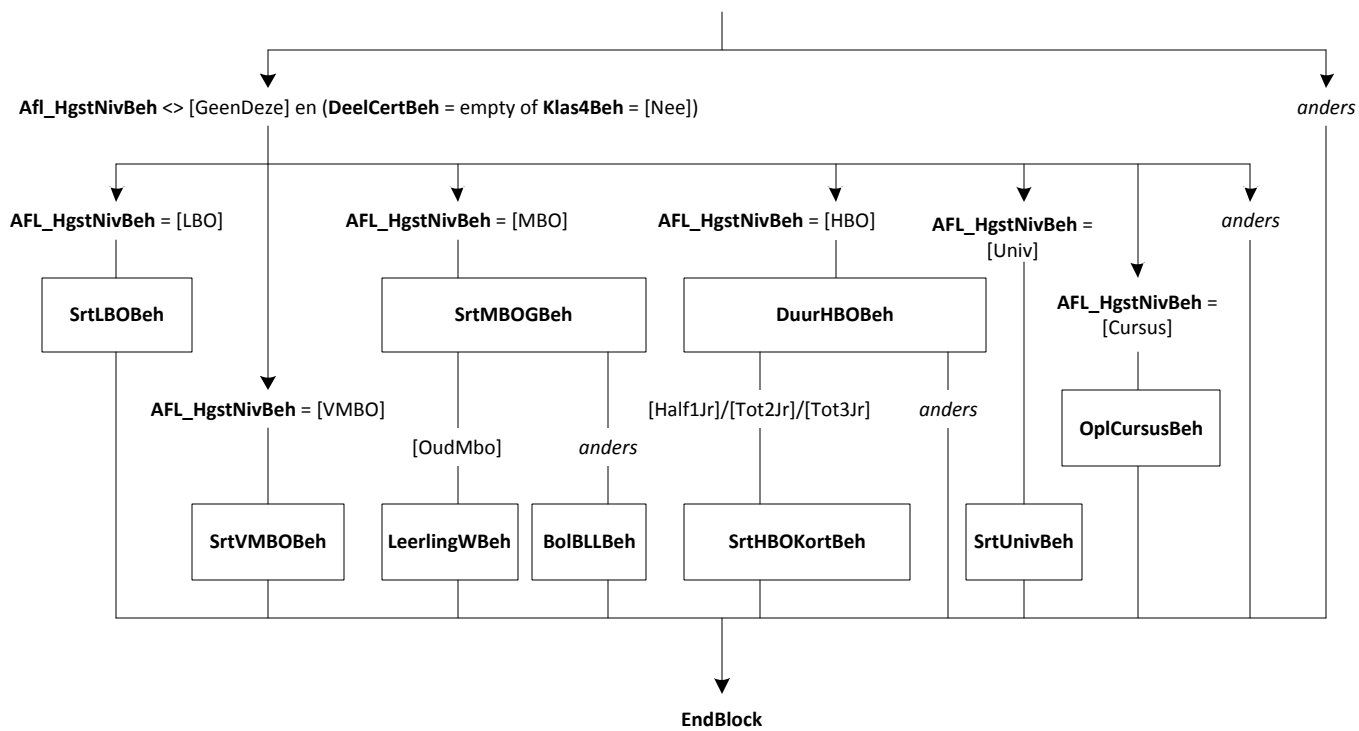


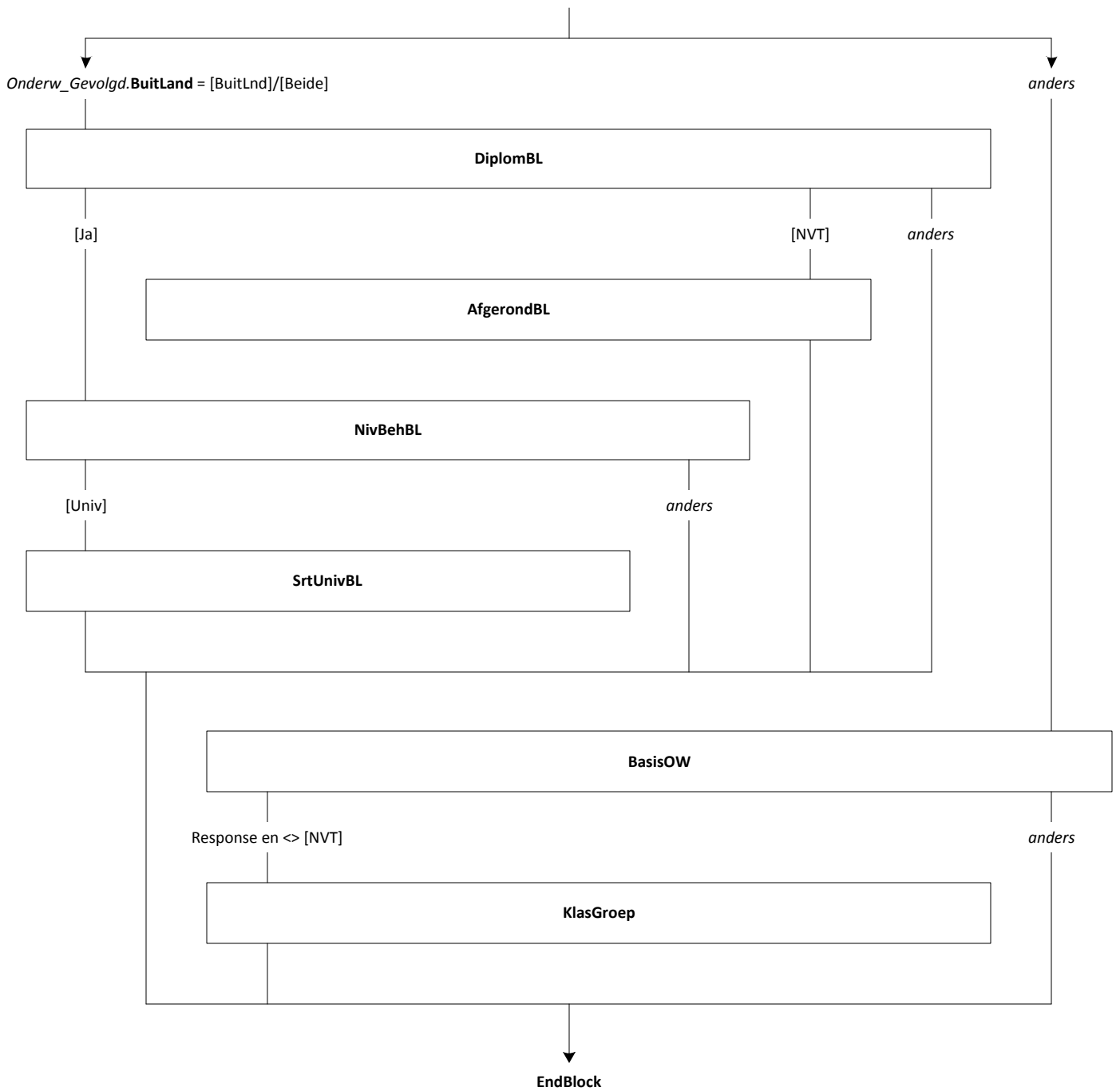
[Nee]/RF

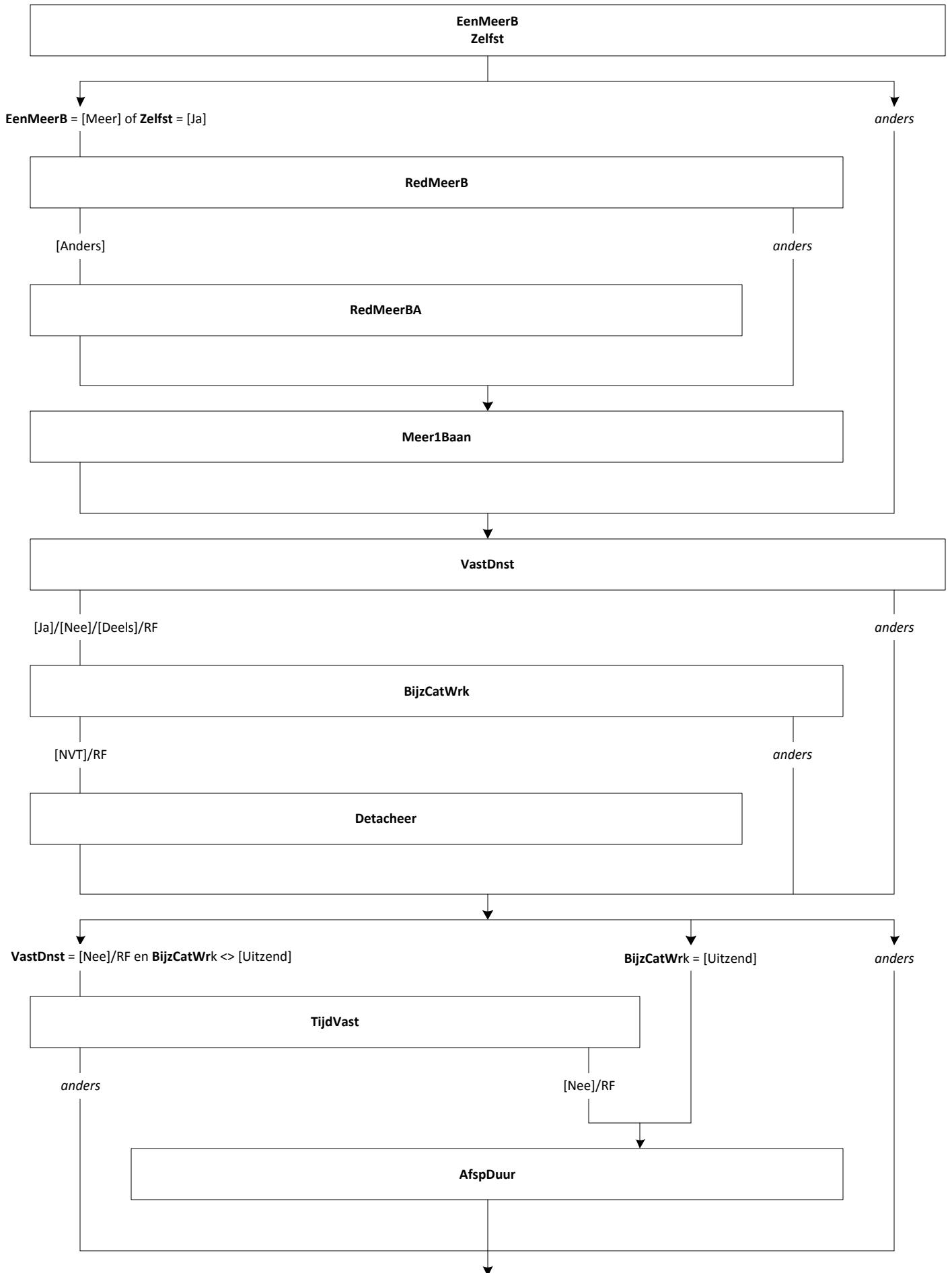
anders

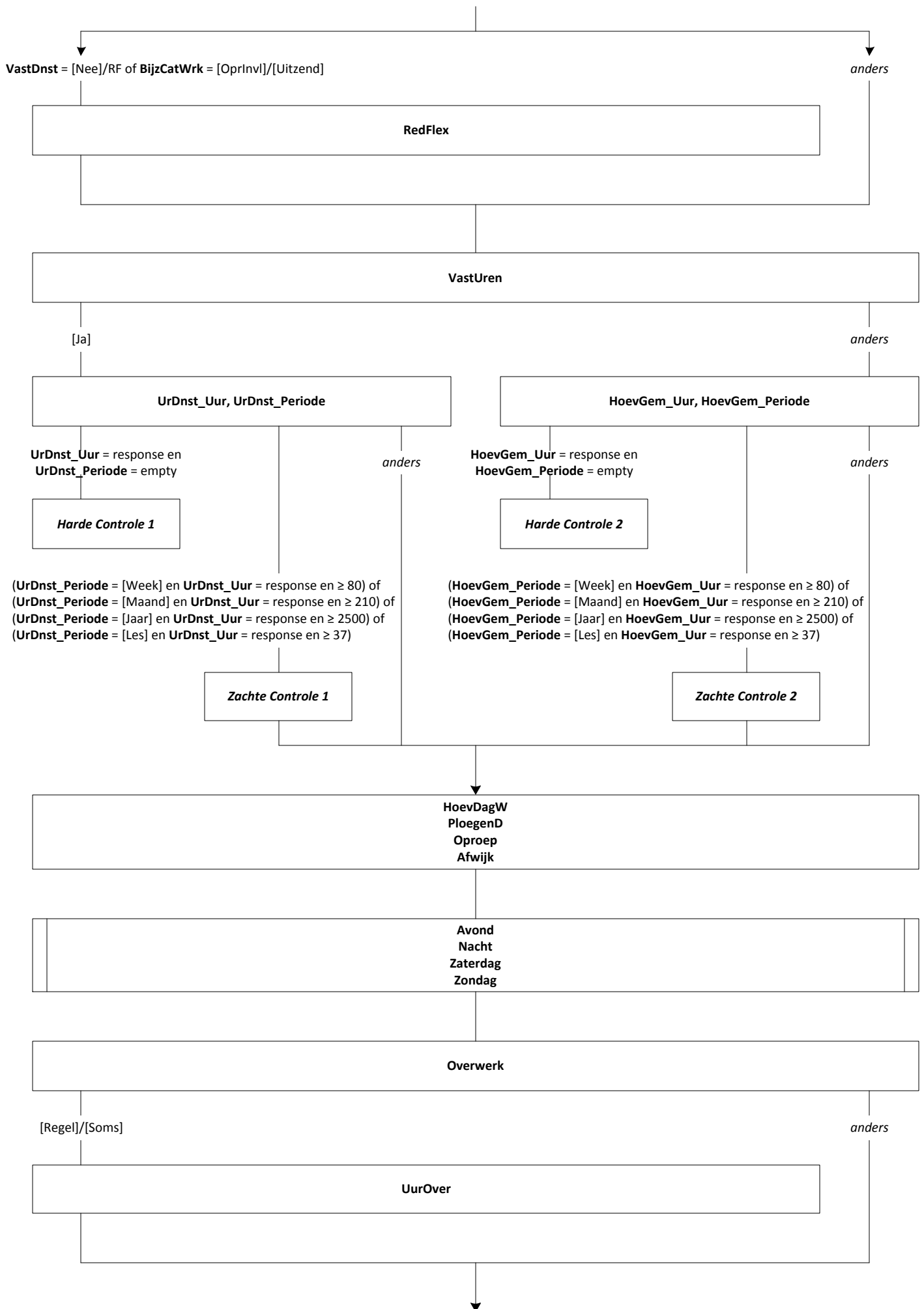


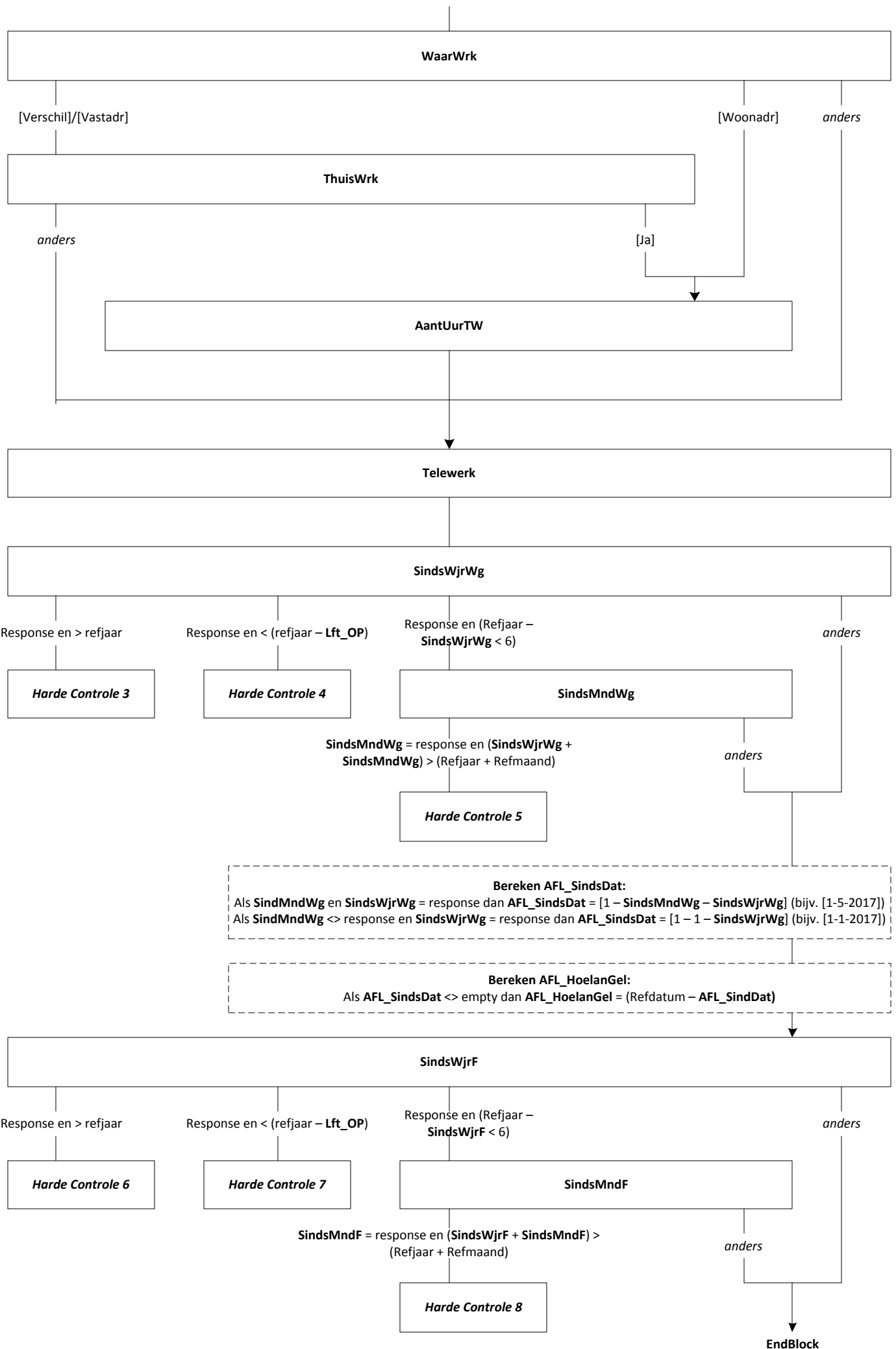
EndBlock

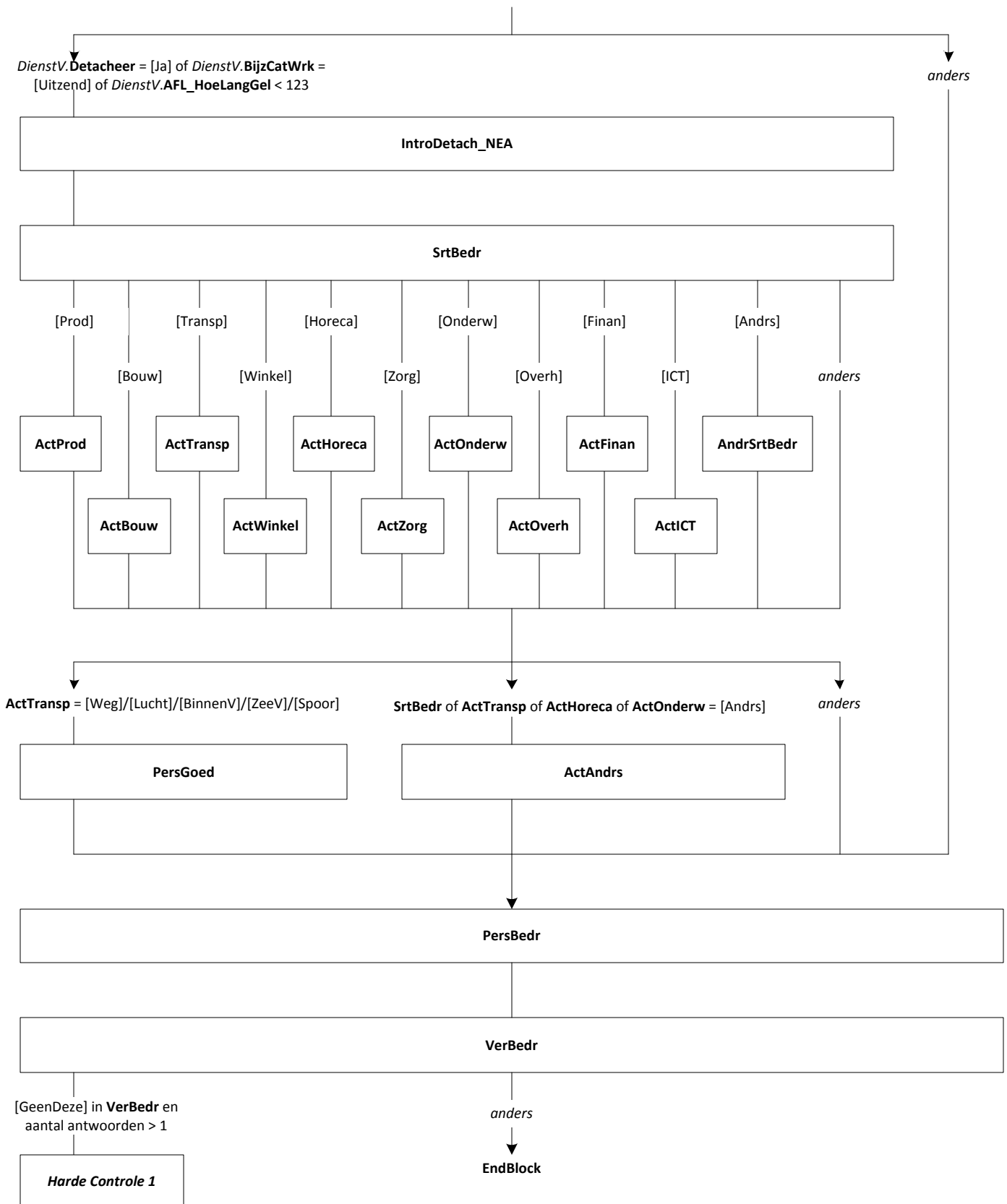




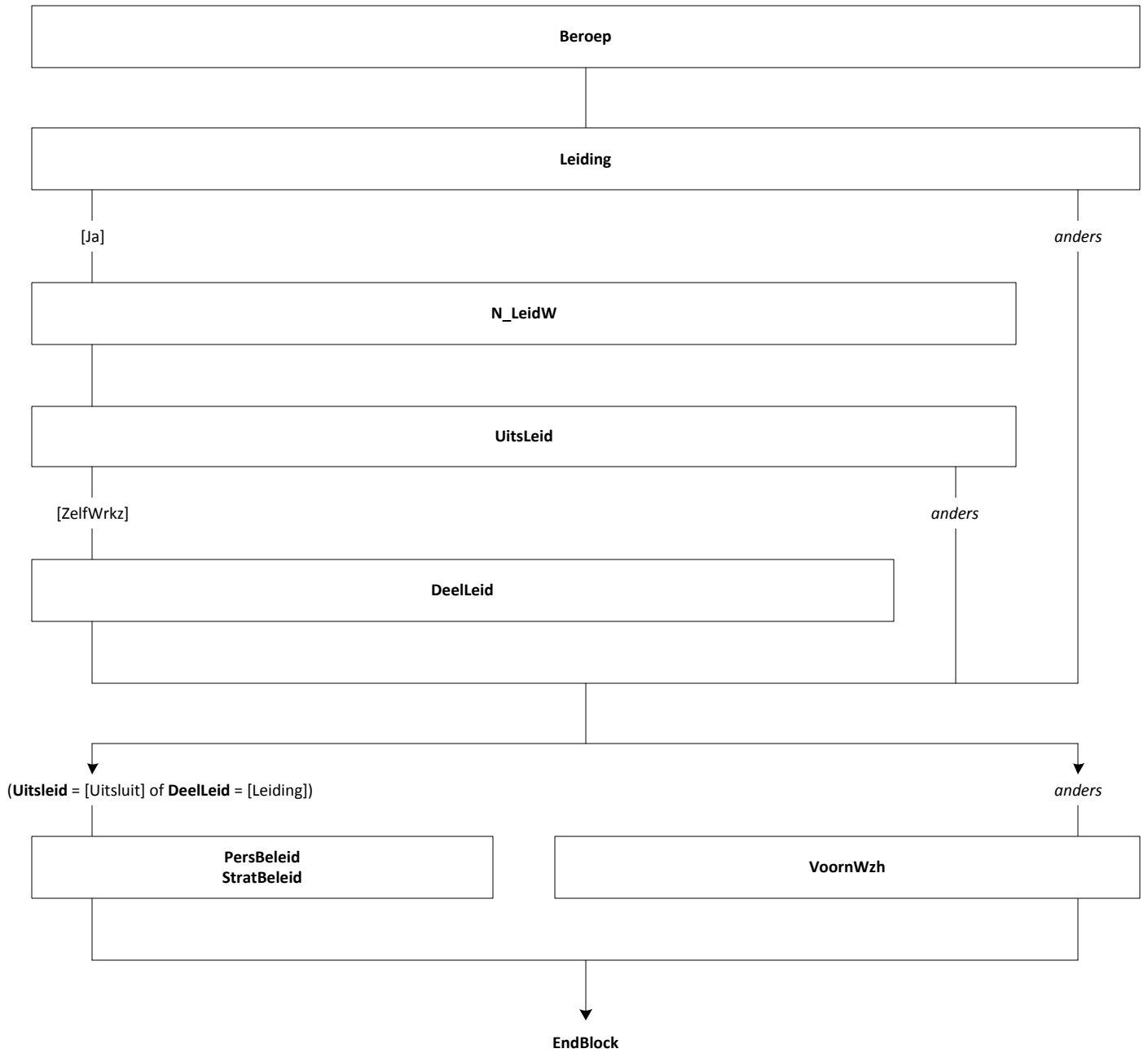


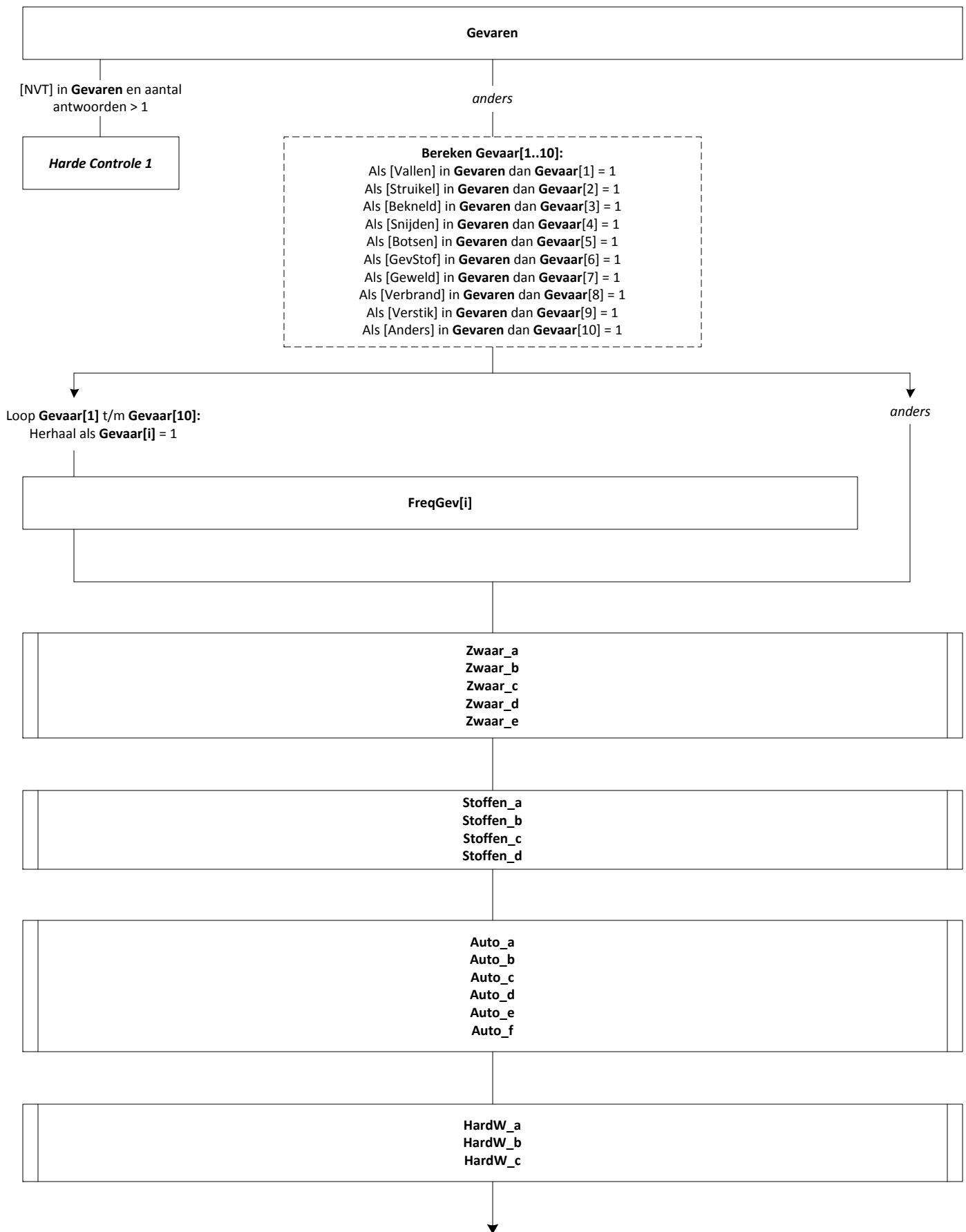


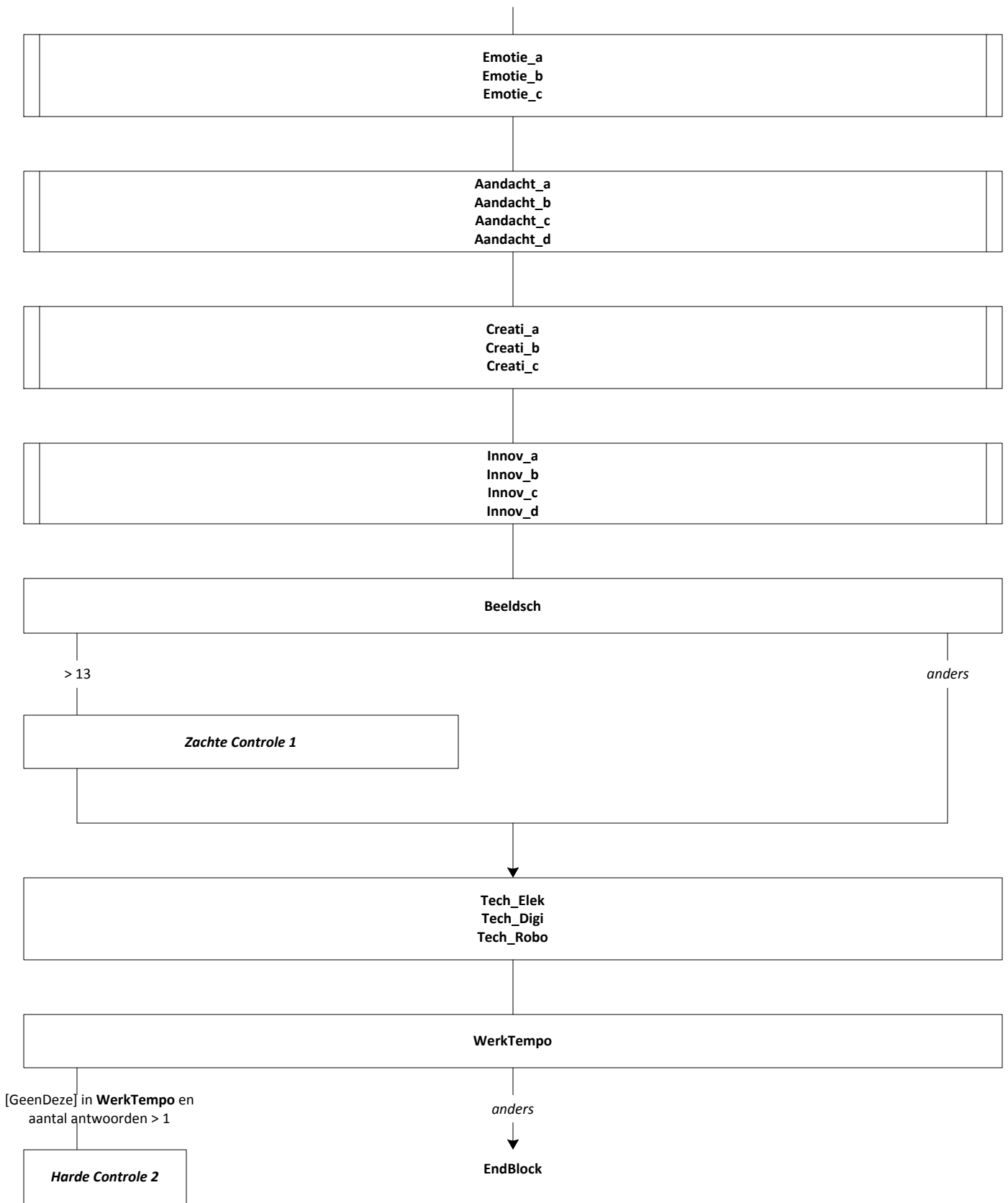


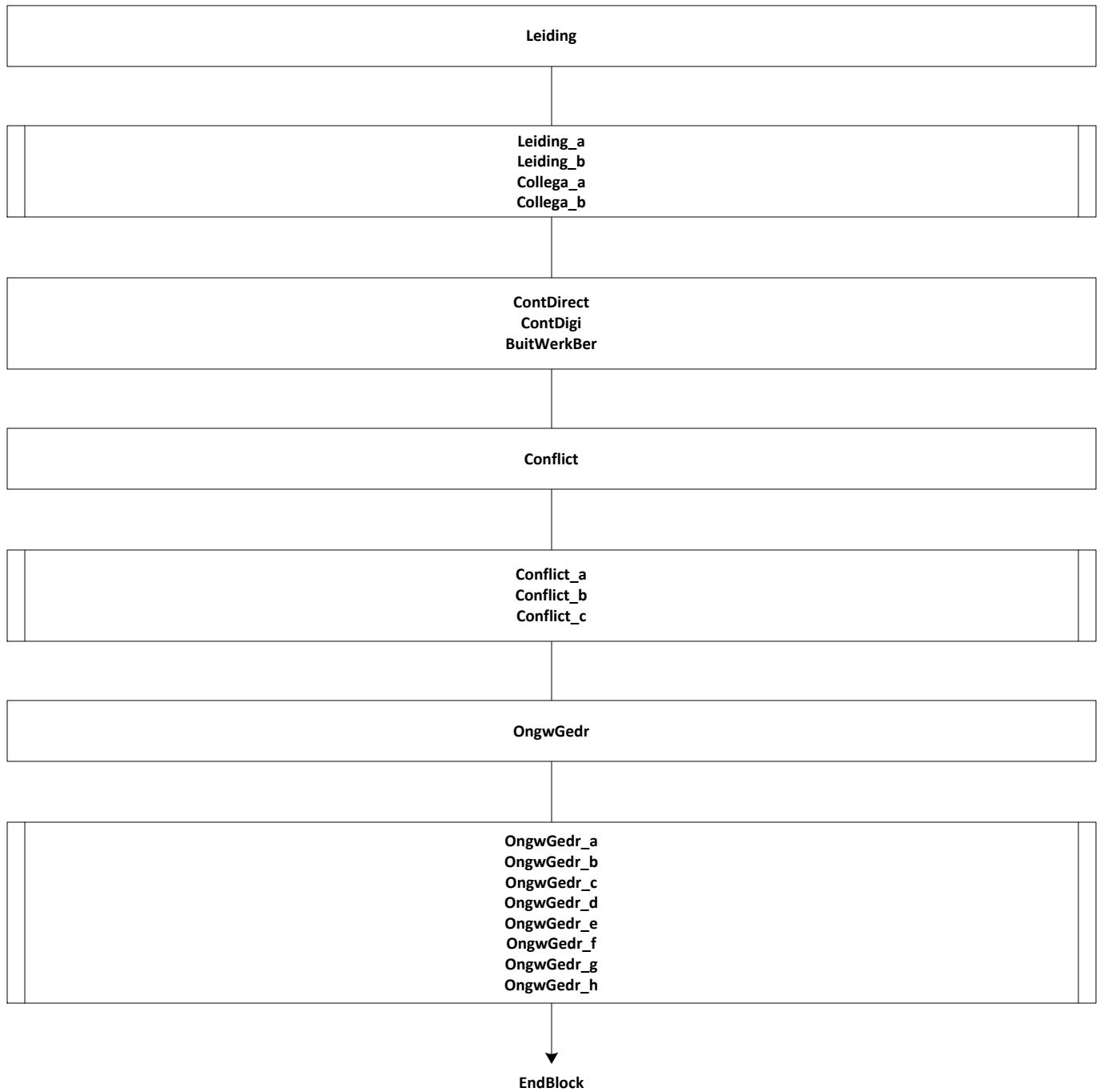


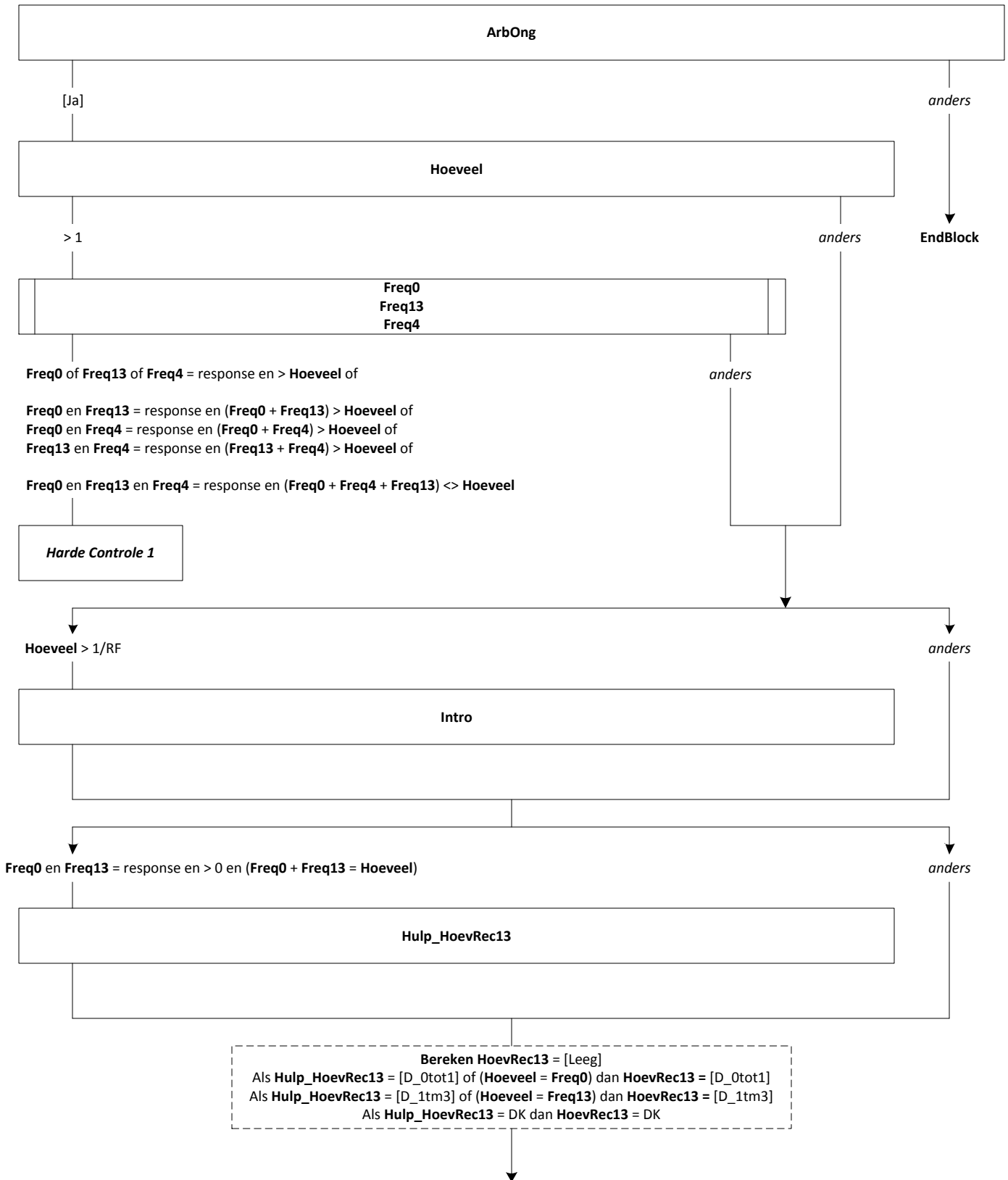


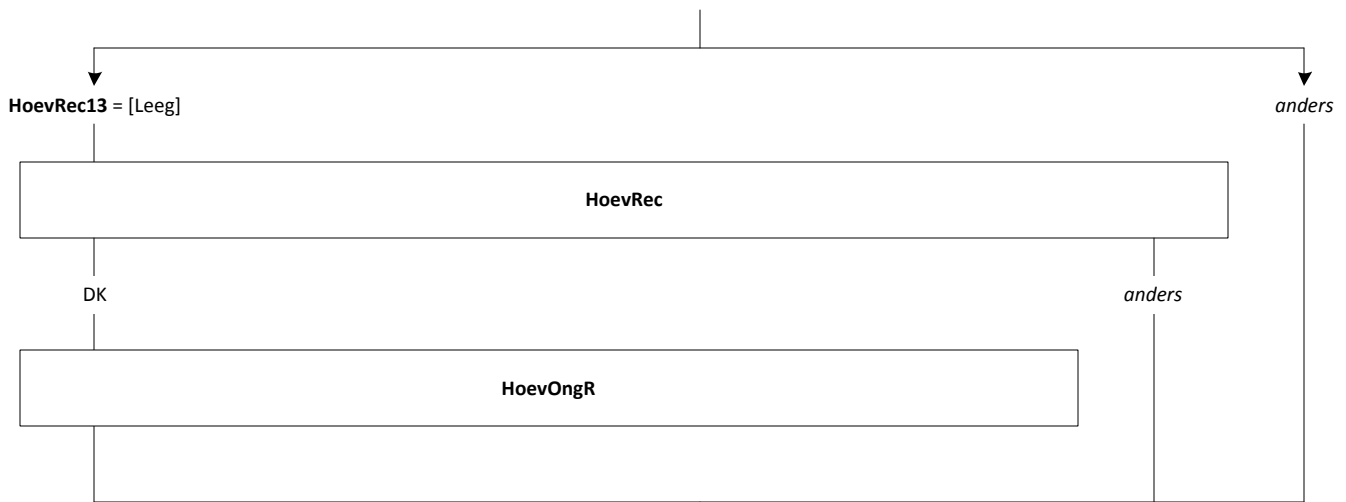












**Bereken OngArray1:**  
 Als (HoevOngR = response en > [D\_1tm3]) of (HoevRec = response en ≥ 4) of ((Freq4 = response en ≥ 1) en HoevOngR = RF) dan **OngArray1** = [Dag4\_Nr1]  
 Anders **OngArray1** = [KortOnbk]

**Bereken OngArray2:**  
 Als **Freq4** = response en ≥ 2 en **OngArray1** = [Dag4\_Nr1] dan **OngArray2** = [Dag4\_Nr2]  
 Als **Freq4** = response en ≥ 1 en **OngArray1** = [KortOnbk] dan **OngArray2** = [Dag4\_Nr1]  
 Anders **OngArray2** = leeg.

**Bereken OngArray3:**  
 Als **Freq4** = response en ≥ 3 en **OngArray1** = [Dag4\_Nr1] dan **OngArray3** = [Dag4\_Nr3]  
 Als **Freq4** = response en ≥ 2 en **OngArray1** = [KortOnbk] dan **OngArray3** = [Dag4\_Nr2]  
 Anders **OngArray3** = leeg.

**Bereken Hlp\_Route:**  
 Als **OngArray1** = [KortOnbk] en **OngArray2** = empty dan **Hlp\_Route** = [T1]  
 Als **OngArray1** = [KortOnbk] en **OngArray2** = [Dag4\_Nr1] en **OngArray3** = empty dan **Hlp\_Route** = [T1T2]  
 Als **OngArray1** = [KortOnbk] en **OngArray2** = [Dag4\_Nr1] en **OngArray3** = [Dag4\_Nr2] dan **Hlp\_Route** = [T1T2T3]  
 Als **OngArray1** = [Dag4\_Nr1] en **OngArray2** = empty dan **Hlp\_Route** = [T2]  
 Als **OngArray1** = [Dag4\_Nr1] en **OngArray2** = [Dag4\_Nr2] en **OngArray3** = empty dan **Hlp\_Route** = [T2T3]  
 Als **OngArray1** = [Dag4\_Nr1] en **OngArray2** = [Dag4\_Nr2] en **OngArray3** = [Dag4\_Nr3] dan **Hlp\_Route** = [T2T3T3]

